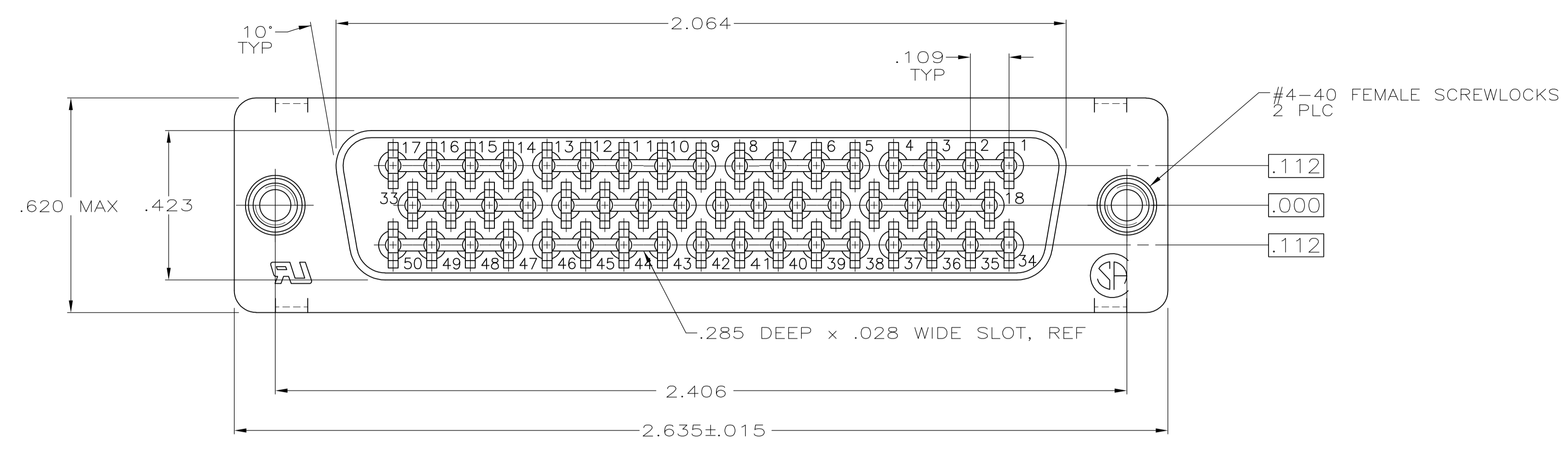
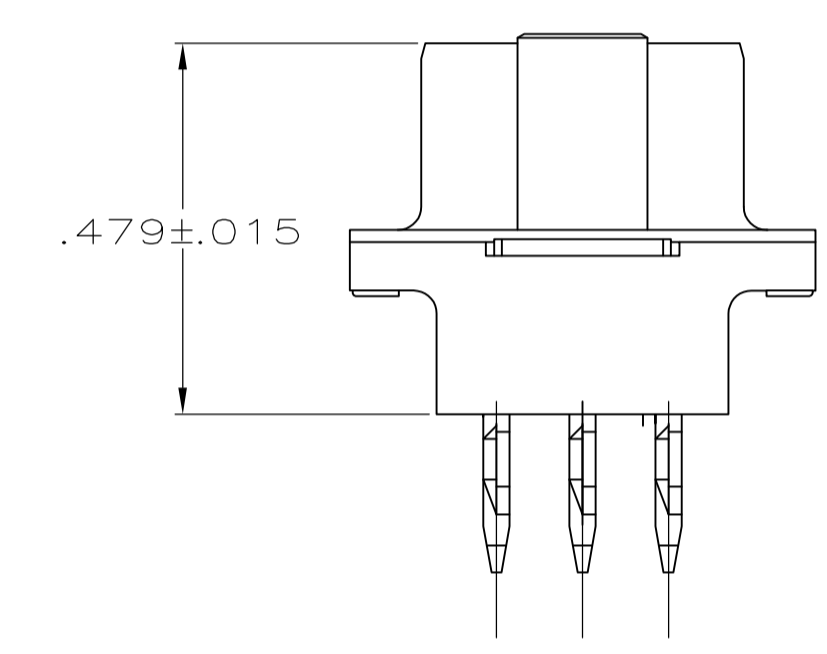
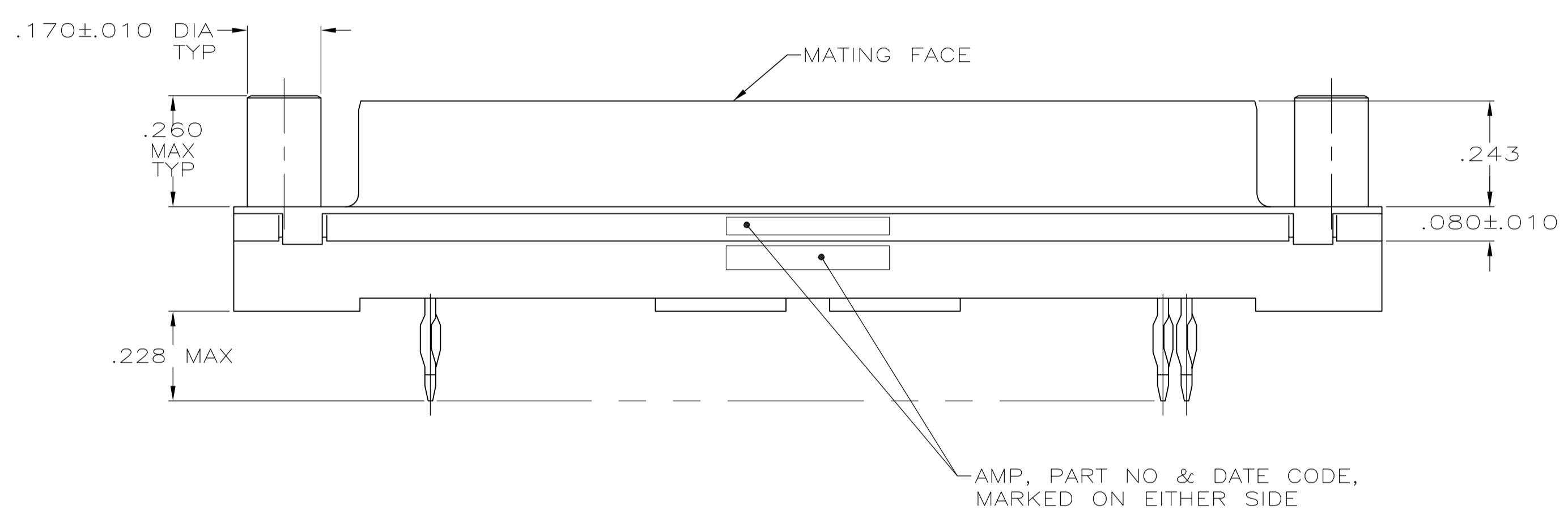


LOC		DIST		REVISIONS			
GP	00	REV	DATE	BY	APPV	DATE	DESCRIPTION
L		REVISED PER	ECO-12-000090			30JAN2012	CJV SLB



- 1 FOR USE WITH .093 MINIMUM THICK PRINTED CIRCUIT BOARD. REFER TO APPLICATION SPECIFICATION FOR PRINTED CIRCUIT BOARD LAYOUT DIMENSIONS AND FINISH RECOMMENDATIONS.
- 2 DUPLEX PLATED: GOLD FLASH ON MATING SURFACE, BRIGHT TIN OR BRIGHT TIN LEAD ON COMPLIANT PIN, ALL OVER NICKEL.
- 3 .000030 MINIMUM GOLD IN MATING AREA. .000100 MINIMUM TIN OR TIN-LEAD ON COMPLIANT PIN. ALL OVER .000050 MINIMUM NICKEL. OR GOLD FLASH OVER PALLADIUM NICKEL. .000030 MINIMUM TOTAL IN MATING AREA. .000100 MINIMUM TIN OR TIN-LEAD ON COMPLIANT PIN. ALL OVER .000050 MINIMUM NICKEL.
- 4 SHELL: PLATED .0002-.0004 BRIGHT TIN
- 5. NOTE REMOVED
- 6 MATERIAL: HOUSING: FLAME RETARDANT 94V-0 RATED THERMOPLASTIC; COLOR: BLACK; CONTACTS: COPPER ALLOY; SHELL: CARBON STEEL; SCREWLOCKS: ZINC ALLOY
- 7 SCREWLOCKS: CLEAR TRIVALENT CHROMATE COATING



OBSOLETE	CONTACT FINISH	747145-2	747145-1
		PART NUMBER	

THIS DRAWING IS A CONTROLLED DOCUMENT. DIMENSIONING AND TOLERANCING PER ASME Y14.5M-2009		DIN D.HARDY 04-12-94	TE Connectivity	
DIMENSIONS: INCHES		CIK R.STONE 04-26-94	RCPT ASSY, SIZE 5, 50 POSN, AMPLIMITE HDP, MDM PROFILE, W/ ACTION PIN CONT & METAL SHELL	
TOLERANCES UNLESS OTHERWISE SPECIFIED:		APVD M.PERCHEKKE 04-26-94	NAME	
0 PLC ± -	1 PLC ± -	PRODUCT SPEC	108-40014	
2 PLC ± -	3 PLC ± .005	APPLICATION SPEC	114-40026	
4 PLC ± -	ANGLES ± -	SIZE	CAGE CODE	DRAWING NO
		A1	00779	747145
MATERIAL	FINISH	WEIGHT	RESTRICTED TO	
			CUSTOMER DRAWING	
		SCALE	SHEET	REV
		4:1	1 of 1	