

Sensitivity Wavelength Range: 750nm ~ 1750nm

FEATURES

- > High Speed Response (Max:2Gbps)
- > 3mm Plastic Package
- > Active Area of 0.30mm / High Sensitivity
- > Spectral Response Range: 750nm - 1750nm

APPLICATIONS

- > High Speed Optical Communications
- > Industrial Controls
- > Optical Switches
- > LIDAR
- > Medical

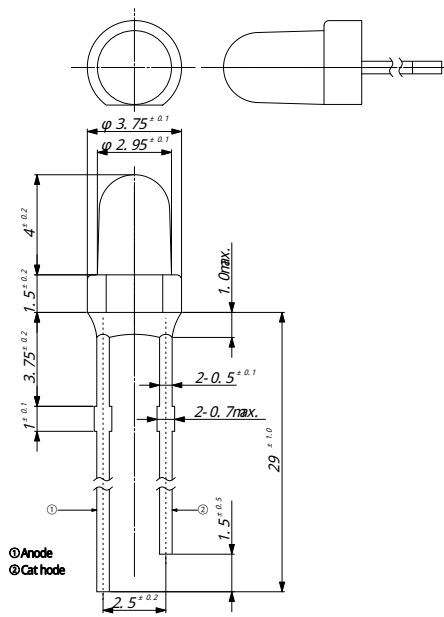


Absolute Maximum Ratings (Ta=25°C)

ITEMS	SYMBOL	RATINGS	UNIT
Active Area	Φ	0.3	mm
Operating Temperature Range	Topr	-20 to +85	°C
Storage Temperature Range	Tstg	-30 to +100	°C

Electrical & Optical Characteristics (Ta = 25°C)

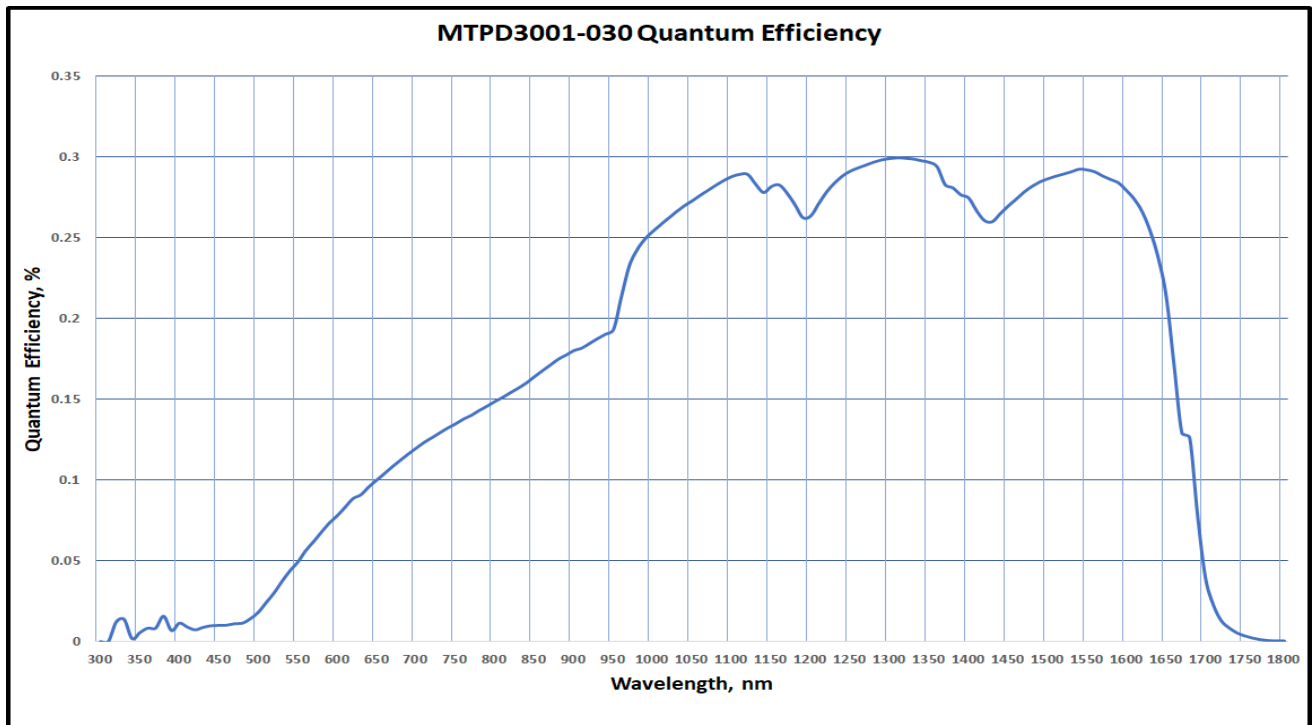
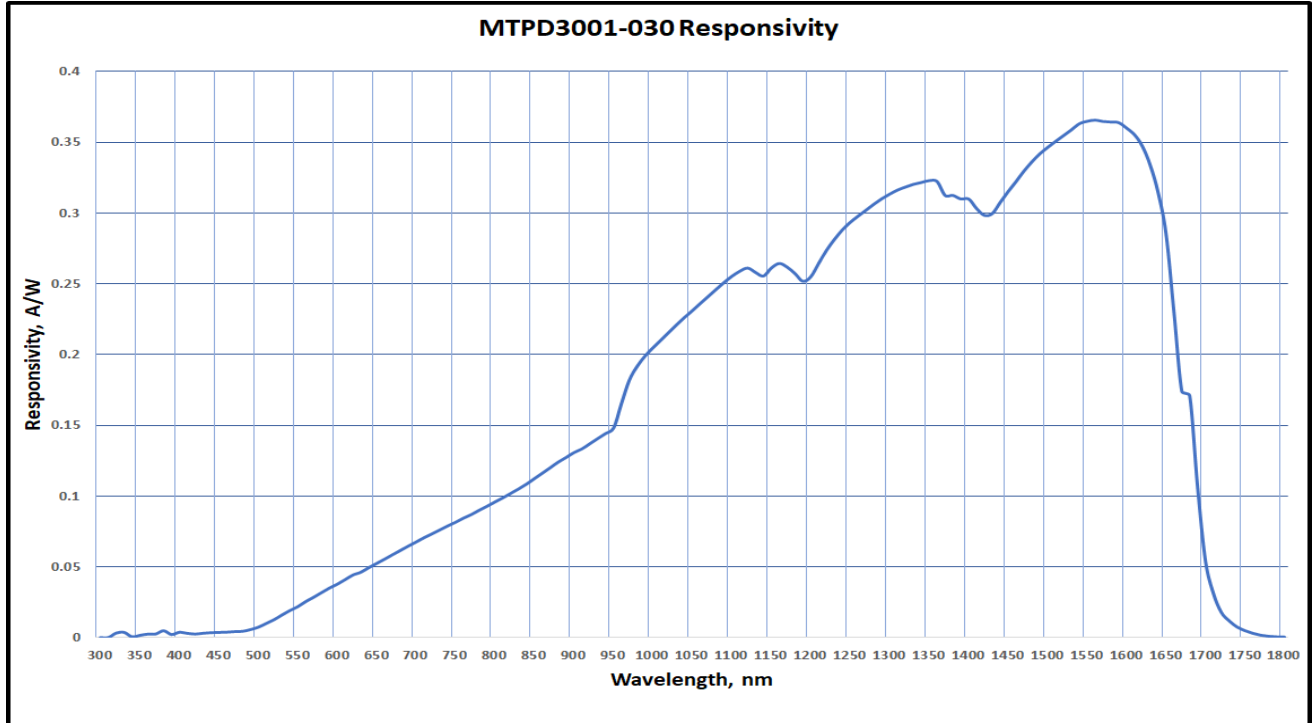
ITEMS	SYMBOL	CONDITIONS	MIN	TYP	MAX	UNIT
Breakdown Voltage	VR	IR= 10uA	2	--	--	V
Sensitivity Range	λ		750	--	1750	nm
Dark Current	ID	VR=0V	--	0.1	--	nA
Dark Current	ID	VR=1V	--	8.6	--	nA
Junction Capacitance	C	VR=0V	--	11.5	--	pF
Junction Capacitance	C	VR=1V	--	9	--	pF
Light Current @ $\lambda=1300$ nm	IL	If=10mA	--	3	--	uA
Light Current @ $\lambda=1300$ nm	IL	If=20mA	--	5	--	uA
Responsivity	R	$\lambda=1560$ nm	--	0.37	--	A/W
Quantum Efficiency	QE	$\lambda=1310$ nm	30	--	--	%
Shunt Resistance	RSH	VR= 10mV	--	21	--	M Ω
Switching Times	Tr, Tf	VR=2V	--	0.3	--	ns



Unit: mm, Tolerance: ± 0.2

The information contained herein is subject to change without notice.

2023-03-27



The information contained herein is subject to change without notice.

2023-03-27