

4

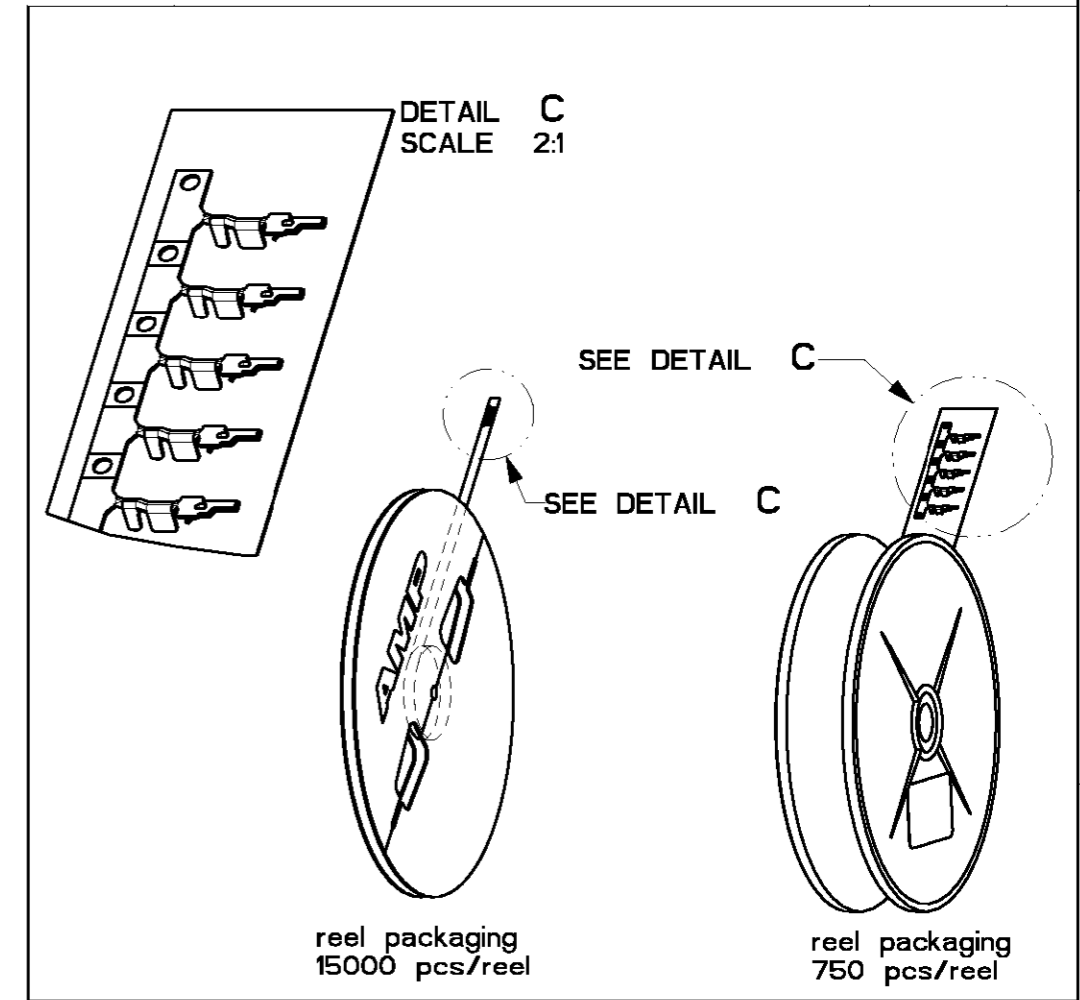
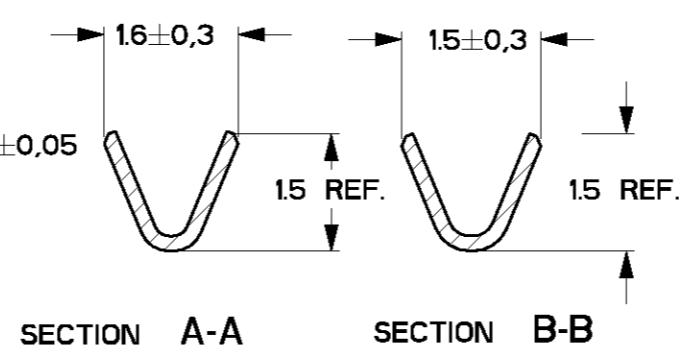
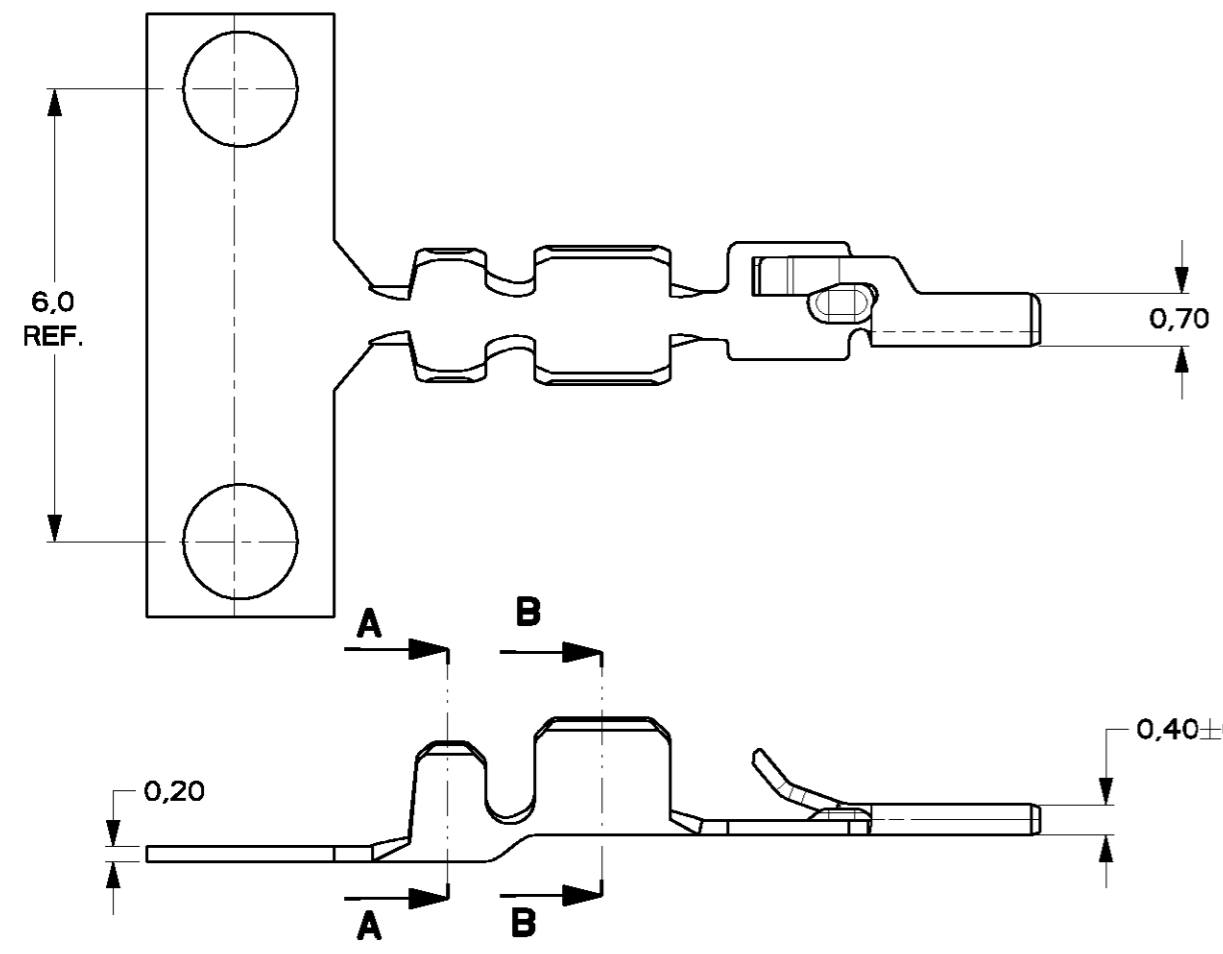
3

2

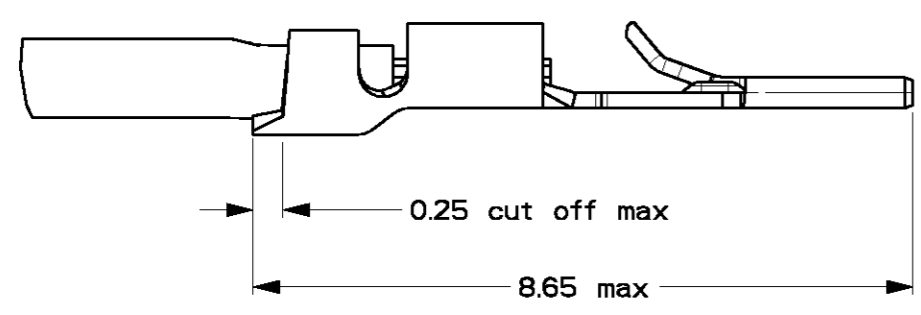
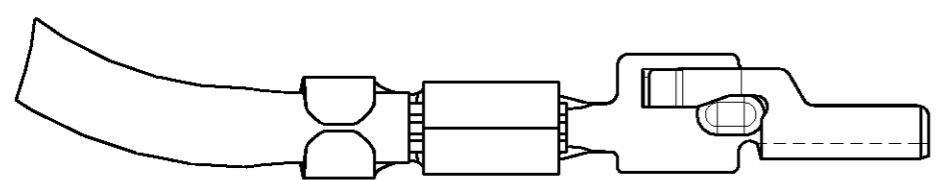
1

THIS DRAWING IS UNPUBLISHED. XXXXXXXXXXXX DATE: -
 © COPYRIGHT - BY ALL RIGHTS RESERVED.

LOC	DIST	REVISIONS		
LTR	DESCRIPTION	DATE	APVD	
H	-	E1	REVISED PER ECO-11-005294	30APR11 HMR



- NOTES:**
1. WIRE RANGE 24-28 AWG
 2. INSULATION RANGE ϕ .030- .040 (0,76-1,00 mm)
 3. FOR APPLICATOR USE ONLY
 4. FOR HANDTOOL USE ONLY
 5. FOR APPLICABLE CONNECTOR HOUSINGS SEE C-338095.



750	Pre-Tin	COSI-contact	Phosphorbronze	1-0338096-1
15000	Pre-Tin	COSI-Contact	Phosphorbronze	0-0338096-1
Pcs/reel	Finish	Description	Material	Part number

DIMENSIONS: mm 		TOLERANCES UNLESS OTHERWISE SPECIFIED: 0 PLC ± 0.2 1 PLC ± 0.1 2 PLC ± 0.05 3 PLC ± 0.01 4 PLC ± - ANGLES ± 0.2°		DWN M.v.Amelsfoort CHK H.v.Delft APVD - PRODUCT SPEC 108-19052 APPLICATION SPEC 114-19051 WEIGHT -				
MATERIAL Brass FINISH Pre-tinplated		CUSTOMER DRAWING		NAME Micro-MaTch COSI-CONTACT SIZE A3 CAGE CODE 00779 DRAWING NO C-338096		SCALE 10:1 SHEET 1 OF 1 REV E1		