

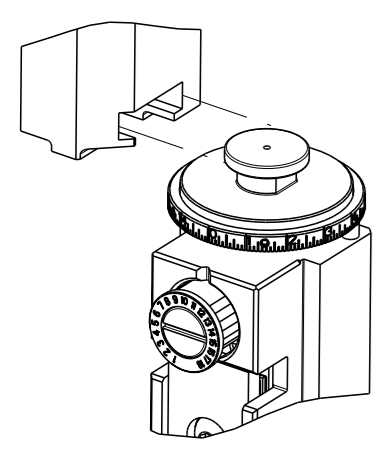


8 7 6 5 4 3 2 1

THIS DRAWING IS UNPUBLISHED. RELEASED FOR PUBLICATION 20
 BY TYCO ELECTRONICS CORPORATION. ALL RIGHTS RESERVED.


APPLICATOR STYLE CONVERSION CHART

PART NUMBER	REVISION	DESCRIPTION	FEED TYPE	CONVERT TO	PART NUMBERS REQUIRED					
2266832-1	A	FINE CRIMP HEIGHT ADJUST	MECHANICAL	PNEUMATIC FEED	2119950-1	1338685-1	5-18022-5	2119641-1	2119799-1	2063440-1
				SERVO LATCH PLATE	2119951-1	-	8-2266832-5	1901094-3	-	2168400-6 (QUANTITY 2)
				SMART APPLICATOR	2161326-1	-	8-2266832-4	-	-	
2266832-2	A	FINE CRIMP HEIGHT ADJUST	PNEUMATIC	MECHANICAL FEED	2119949-1	1338685-1	5-18022-5	2119653-1	-	-
				SERVO LATCH PLATE	2119951-1	-	8-2266832-5	1901094-3	-	2168400-6 (QUANTITY 2)
				SMART APPLICATOR	2161326-1	-	8-2266832-4	-	-	
2266832-5	A	FINE CRIMP HEIGHT ADJUST	SERVO LATCH PLATE 	MECHANICAL FEED	2119949-1	1338685-1	5-18022-5	2119653-1	-	-
				PNEUMATIC FEED	2119950-1	1338685-1	5-18022-5	2119641-1	2119799-1	2063440-1
2266832-6	A	NON-CRIMP HEIGHT ADJUST	SERVO LATCH PLATE 	-	-	-	-	-	-	-
				-	-	-	-	-	-	-
2266832-7	A	FINE CRIMP HEIGHT ADJUST	NONE	-	-	-	-	-	-	
7-2266832-7	A	CRIMP TOOLING KIT	-	-	-	-	-	-	-	



APPLICATOR DATA


CRIMP	SIZE	TYPE
WIRE	1.30 mm [.051]	F
INSUL	1.70 mm [.067]	F

APPLICATOR INSTRUCTIONS 408-10389 

TERMINAL DATA: JST TERMINAL JST CRIMP SPECIFICATION

TERMINAL NAME: TERMINAL, RA CONNECTOR

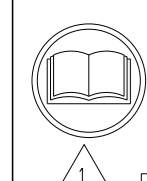
WIRE STRIP LENGTH	INSULATION DIAMETER RANGE
2.10-2.90 mm [.083-.114 IN]	Ø1.30-1.70 mm [.051-.067 IN]

TERMINAL APPLICATION SPECIFICATION  CHM-1-196 Rev 09-06-10

TERMINALS APPLIED

TE TERMINAL	JST TERMINAL	TE TERMINAL	JST TERMINAL
286996-1	RA-SC1290		

WIRE SIZE	CRIMP HEIGHT mm [INCH]	CRIMP HEIGHT REFERENCE SETTING
22 AWG	0.69+/-0.025 [.027+/- .001]	6.6
24 AWG	0.65+/-0.025 [.025+/- .001]	7.0
26 AWG	0.59+/-0.025 [.023+/- .001]	7.7



- 1 RECOMMENDED SPARE PARTS
- 2 GREASE BEARING SURFACES LIGHTLY
- 3 LUBRICATE DAILY PER THE APPLICATOR INSTRUCTION SHEET SUPPLIED WITH THE APPLICATOR.
- 4 APPLICATOR SPECIFIC DATA TO BE ENTERED INTO BLANK MEMORY CHIP AT ASSEMBLY. SEE BELOW FOR PART NUMBER:
 MECHANICAL FEED WITH "SMART APPLICATOR" CONVERSION: 8-2266832-4
 PNEUMATIC FEED WITH "SMART APPLICATOR" CONVERSION: 8-2266832-4
 SERVO FEED WITH "FINE CRIMP HEIGHT ADJUST": 8-2266832-5
 SERVO FEED WITH "NON-CRIMP HEIGHT ADJUST": 8-2266832-6
- 5 ADJUSTMENT OF THE STRIPPER MAY BE REQUIRED WHEN MOVING THE APPLICATOR BETWEEN BENCH AND LEADMAKER APPLICATIONS.
- 6 APPLY PART NUMBER 1-23419-5 LOCTITE TO THREADS OF ITEM 62. APPLY PART NUMBER 2-23419-6 LOCTITE TO THREADS OF ITEM 242. FOR -6 ONLY APPLY PART NUMBER 1-23419-5 LOCTITE TO THREADS OF ITEM 37.
- 7 GREASE THREADS, GROOVE AND O-RING ON ITEMS 35 & 252.
- 8 MAGNET, ITEM 166 MUST BE ORIENTED CORRECTLY IN ORDER TO PROPERLY ACTUATE THE COUNTER.
- 9 CRIMP HEIGHT REFERENCE SETTING WAS THE SETTING USED WHEN THE APPLICATOR WAS QUALIFIED AT THE FACTORY. ADJUSTMENT MAY BE NECESSARY WHEN RUNNING APPLICATOR IN THE FIELD.
- 10 SPARE FEED CAM STORAGE LOCATION REFER TO INSTRUCTION SHEET FOR ADDITIONAL INFORMATION.
- 11 TO CONVERT THE APPLICATOR TO A NON-CARRIER CUTTING STYLE, REMOVE ITEM 13 AND ATTACH TO THE LOCATION ON THE BACK SIDE OF THE HOUSING. REFER TO INSTRUCTION SHEET FOR ADDITIONAL INFORMATION.
- 12 WHEN ASSEMBLING A NON CRIMP HEIGHT ADJUST APPLICATOR (-6) USE SHIMS FROM ITEM 260 TO ACHIEVE A NOMINAL SHIM HEIGHT OF 5.11.

***WARNING**
 ON INSTALLATION, SET WIRE DISC, ITEM 40 TO LARGEST WIRE SIZE SETTING. USE OF SETTINGS BELOW MINIMUM REQUIRED CRIMP HEIGHT SETTING WILL CAUSE DAMAGE TO CRIMP TOOLING.

-	-	1	-	-	-	2119957-2	APPLICATOR SHIM PACK	260
-77	-7	-6	-5	-2	-1	PART NO	DESCRIPTION	ITEM NO

ATLANTIC VERSION
 Shown on sheets 1 of 4 & 2 of 4
 (Pacific version shown on sheets 3 of 4 & 4 of 4)

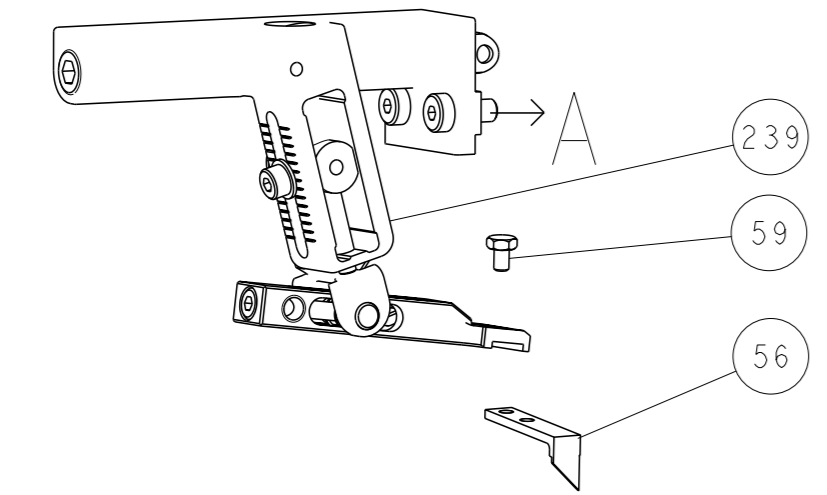
REV	DATE	DESCRIPTION	OWN	APPV
A	24 JUN 2015	ORIGINAL	GH	TE
	23 SEP 2015	RELEASED	GH	TE

REV	DATE	DESCRIPTION	OWN	APPV			
-	1	1	1	1	8-21084-0	O-RING, .676 ID, .070 DIA. MAT.	252
-	-	-	1	-	2119640-1	PUSH ROD, AIR FEED	250
-	-	-	-	1	2079988-1	BUSHING, LCH5-12, MISUMI	249
-	-	-	-	1	2119641-1	FEED CAM, AIR FEED	248
-	1	-	1	1	2119798-1	DETENT PIN	247
-	1	-	1	1	1-22279-3	SPRING, COMPRESSION	246
-	-	1	-	-	2119758-1	RAM, AMP STYLE, SIDE FEED, NON-ADJ.	245
-	1	1	1	1	2119082-4	CAM, SNAIL, INSULATION ADJUSTMENT	244
-	1	1	1	1	2079764-1	WASHER, WAVE SPRING, CREST-TO-CREST	243
-	1	1	1	1	2119083-1	RETAINER, INSULATION DIAL	242
-	1	1	1	1	7-18023-7	SCR, SKT HD CAP M3 X 4.0	241
-	-	2	2	-	2168400-6	SHCS, LOW HEAD, RoHS, M5 X 16	240
-	-	-	-	1	2119580-1	MECHANICAL FEED ASSEMBLY	239
-	-	-	-	1	2063440-1	AIR FEED MODULE	238
-	-	1	1	-	2119740-2	TAG, IDENTIFICATION	213
-	-	1	1	-	1901094-3	SPACER, FEEDER	198
-	-	-	-	2	21045-3	RING, RETAIN, EXTERN, 3/16 CRESCENT	172
-	1	1	1	1	994969-1	MAGNET, RARE EARTH HIGH ENERGY	166
-	REF	REF	REF	REF	994970-2	COUNTER, MAGNETIC	164
-	-	-	-	1	240638-1	SPRING, FEED FINGER	163
-	-	-	-	1	3-23627-7	PIN, RETAIN, GRVD, 3/16 X .854	137
-	-	-	-	1	2119799-1	HOLDER, FEED FINGER, AF	136
-	-	REF	REF	-	SEE NOTE 4	MEMORY CHIP, PROGRAMMED	135
-	-	1	1	-	1633743-1	SERVO FEED LATCH ASM	133
-	-	REF	REF	-	2119944-1	FEED FINGER ASSEMBLY, SF	117
-	1	1	1	1	455888-4	SPACER, CRIMPER	82
-	1	1	1	1	2119956-1	DOCUMENTATION PACKAGE	71
-	1	1	1	1	2119791-5	DEPRESSOR, WIRE	70
-	1	-	-	1	2119740-1	TAG, IDENTIFICATION	67
-	2	2	2	2	2168078-1	SCREW, DRIVE, RH, RoHS, 2 x .188	66
-	1	-	1	1	2119793-1	LIMITER, ADJUSTMENT BOLT	63
-	3	-	3	3	992763-5	SCR, SET, SOC, CONE POINT, M3 x 4.0	62
-	1	1	1	1	2079383-4	SCR, BHSC, RoHS (M4 X 8)	60
-	-	-	-	1	5-18022-5	SCR, HEX HD CAP, M4 X 6.0	59
-	-	-	-	1	1338685-1	PAWL, FEED	56
-	4	4	4	4	2168400-1	SHCS, LOW HEAD, RoHS, M4 X 12	54
-	2	2	2	2	1-2168083-0	SCR, SKT HD CAP, RoHS, M4 X 10	53
-	1	1	1	1	5018030-1	NUT, HEX, REG, RoHS, M3	52
-	1	1	1	1	811242-5	BUMPER, HOLD DOWN	51
-	1	1	1	1	690753-2	SPACER, TONKER	50
-	-	-	-	1	18023-9	SCR, SKT HD CAP M4 X 6.0	49
-	-	-	-	1	2119652-1	FEED CAM, PRE FEED	48
-	-	-	-	1	2119653-1	FEED CAM, POST FEED	47
-	1	1	1	1	2119656-9	APPLICATOR BASIC ASSEMBLY, SF	46
-	1	-	-	1	2119370-1	RAM, AMP STYLE, SIDE FEED	44
-	1	1	1	1	2079383-7	SCR, BHSC, RoHS (M8 X 25)	41
-	1	-	-	1	2119645-1	DISC, NUMBERED FA WIRE ADJUSTMENT	40
-	1	-	-	1	2119957-1	APPLICATOR SHIM PACK	39
-	1	1	1	1	1-2119644-4	RAM WASHER, PRECISION	38
-	1	1	1	1	2119085-1	FA HEAD, ATLANTIC STYLE	37
-	1	-	-	1	2119092-1	BOLT, ADJUSTMENT	35
-	1	1	1	1	1752356-3	SUPPORT, TERMINAL	34
-	2	2	2	2	2079383-5	SCR, BHSC, RoHS (M4 X 20)	33
-	1	1	1	1	2161328-1	HEX HEAD, FLANGED, M5 x 8mm LONG	32
-	1	1	1	1	1320908-6	SPACER, STRIP GUIDE	30
-	1	1	1	1	2119959-1	ASSEMBLY, STRIP GUIDE	29
-	1	1	1	1	1320928-2	STRIP GUIDE	24
-	1	1	1	1	2168083-2	SCR, SKT HD CAP, RoHS, M4 X 8.0	21
-	2	2	2	2	1-18028-2	WASHER, FLAT, REG M4	20
-	1	1	1	1	2119533-1	STRIPPER, SIDE FEED	19
-	1	1	1	1	2119806-1	INSERT, SHEAR	13
-	1	1	1	1	3-22280-3	SPRING, COMPRESSION	12
-	1	1	1	1	1-356885-4	STOP, SHEAR	11
-	1	1	1	1	2119805-1	SHEAR HOLDER, FRONT	10
-	1	1	1	1	1803095-3	FLOATING SHEAR, FRONT	9
-	1	1	1	1	5-1803056-6	ANVIL, COMBINATION	8
-	-	-	-	-	-	-	7
-	-	-	-	-	-	-	6
-	1	1	1	1	2119757-4	DEPRESSOR, SHEAR	5
-	1	1	1	1	2-238011-5	BLOCK, CRIMPER SPACER	4
-	1	1	1	1	9-1633962-1	CRIMPER, INSULATION F PREMIUM	3
-	1	1	1	1	455888-4	SPACER, CRIMPER	2
-	1	1	1	1	9-1633738-1	CRIMPER, WIRE	1

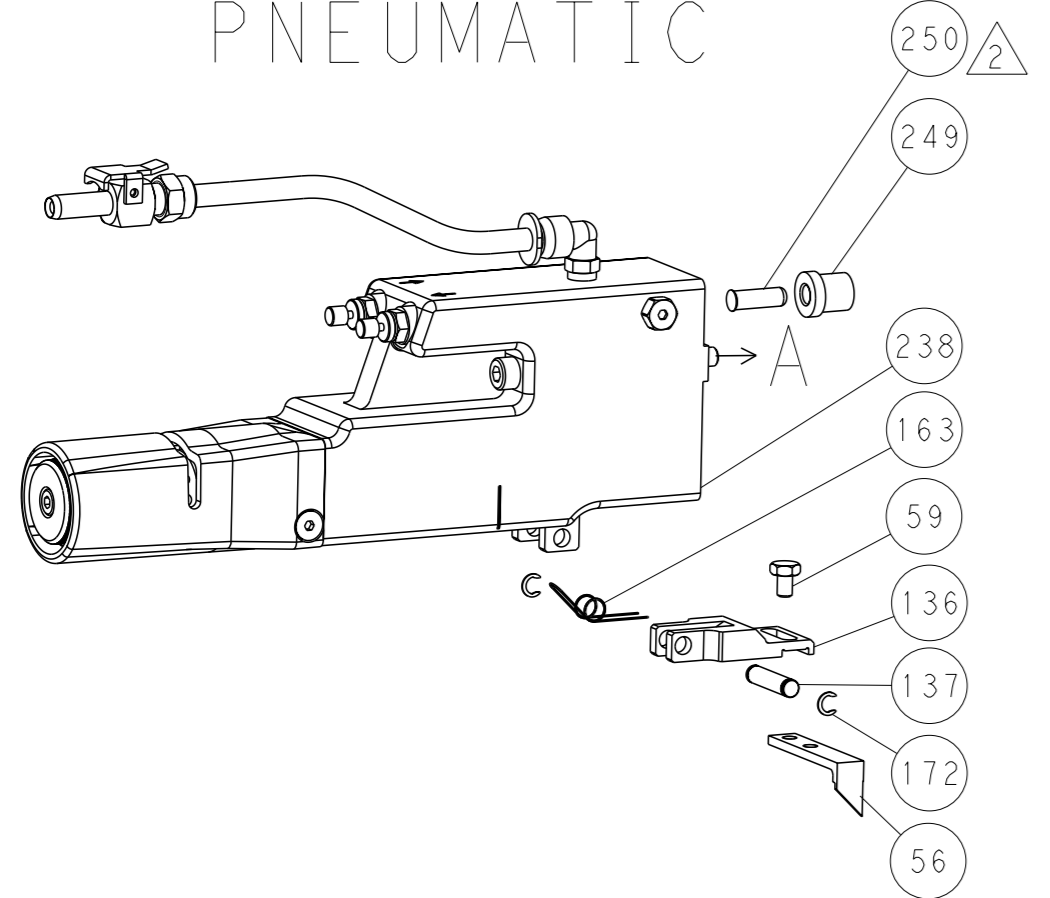
<p>0 PLC ±.5 1 PLC ±0.5 2 PLC ±0.13 3 PLC ±0.013 4 PLC ±0.0001 ANGLES ±.</p>	<p>24 JUNE 2015 25 JUNE 2015 25 JUNE 2015</p>	<p>OFFNER ELBIN</p>	<p>TE Connectivity Harrisburg, PA 17105-3608</p>
<p>DIMENSIONS: mm</p>	<p>TOLERANCES UNLESS OTHERWISE SPECIFIED:</p>	<p>NAME Ocean Side Feed Applicator</p>	<p>SIZE CASE CODE DRAWING NO RESTRICTED TO A 00779 C=2266832</p>
<p>MATERIAL</p>	<p>FINISH</p>	<p>WEIGHT</p>	<p>Customer Accessible Production Drawing SCALE 1:2 SHEET 1 OF 4 REV A</p>

LOC	DIST	REVISIONS			
A	66	REV	DATE	OWN	APVD
-	-	SEE SHEET 1	-	-	-

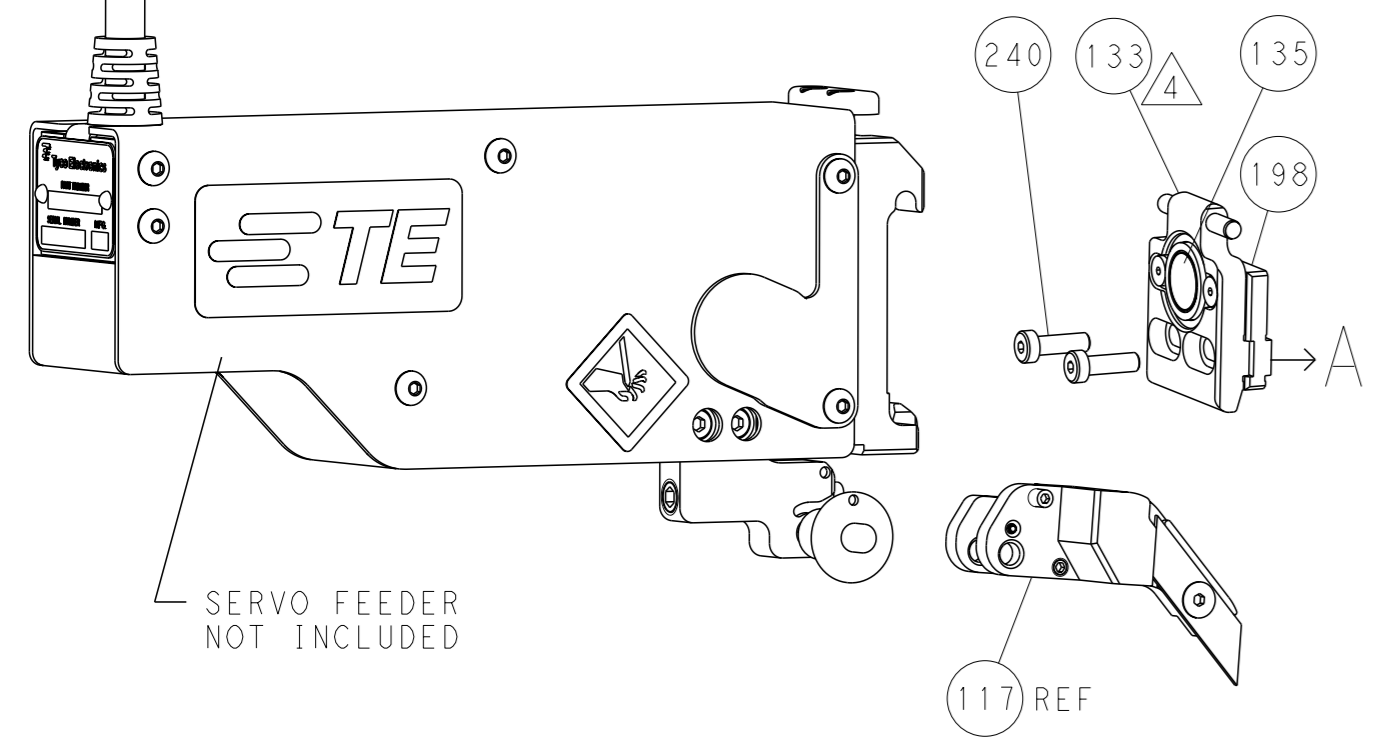
FEED TYPE MECHANICAL



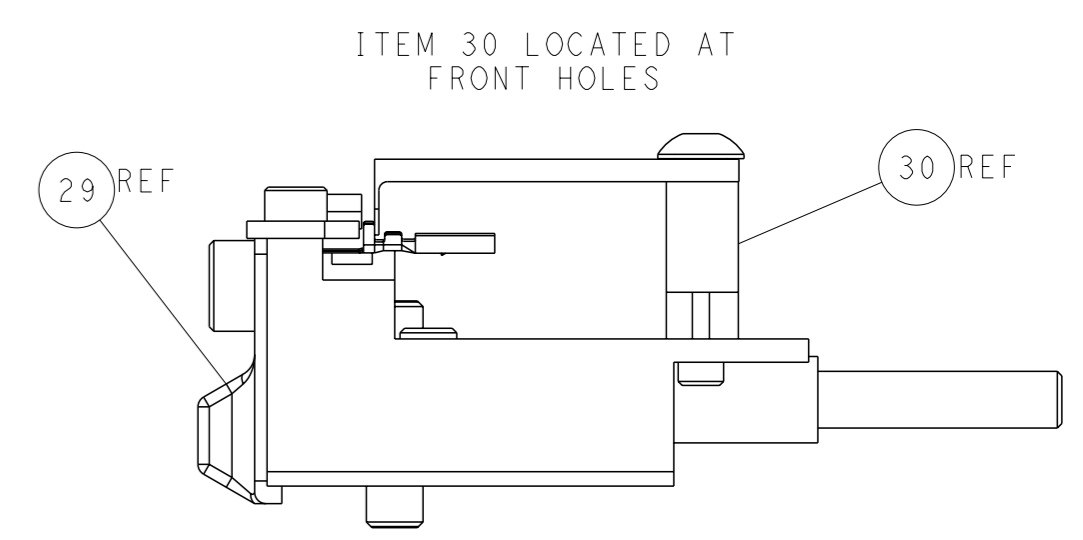
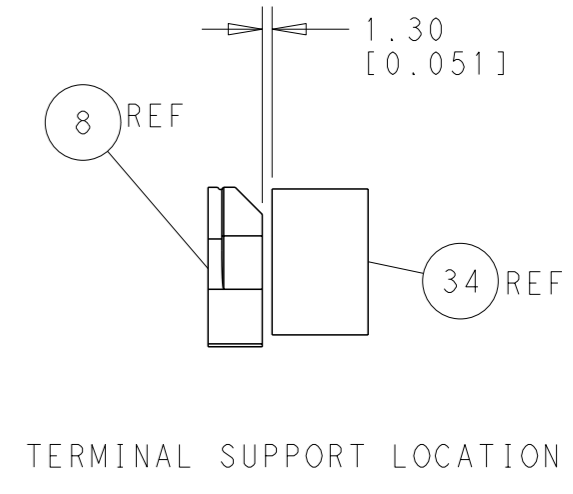
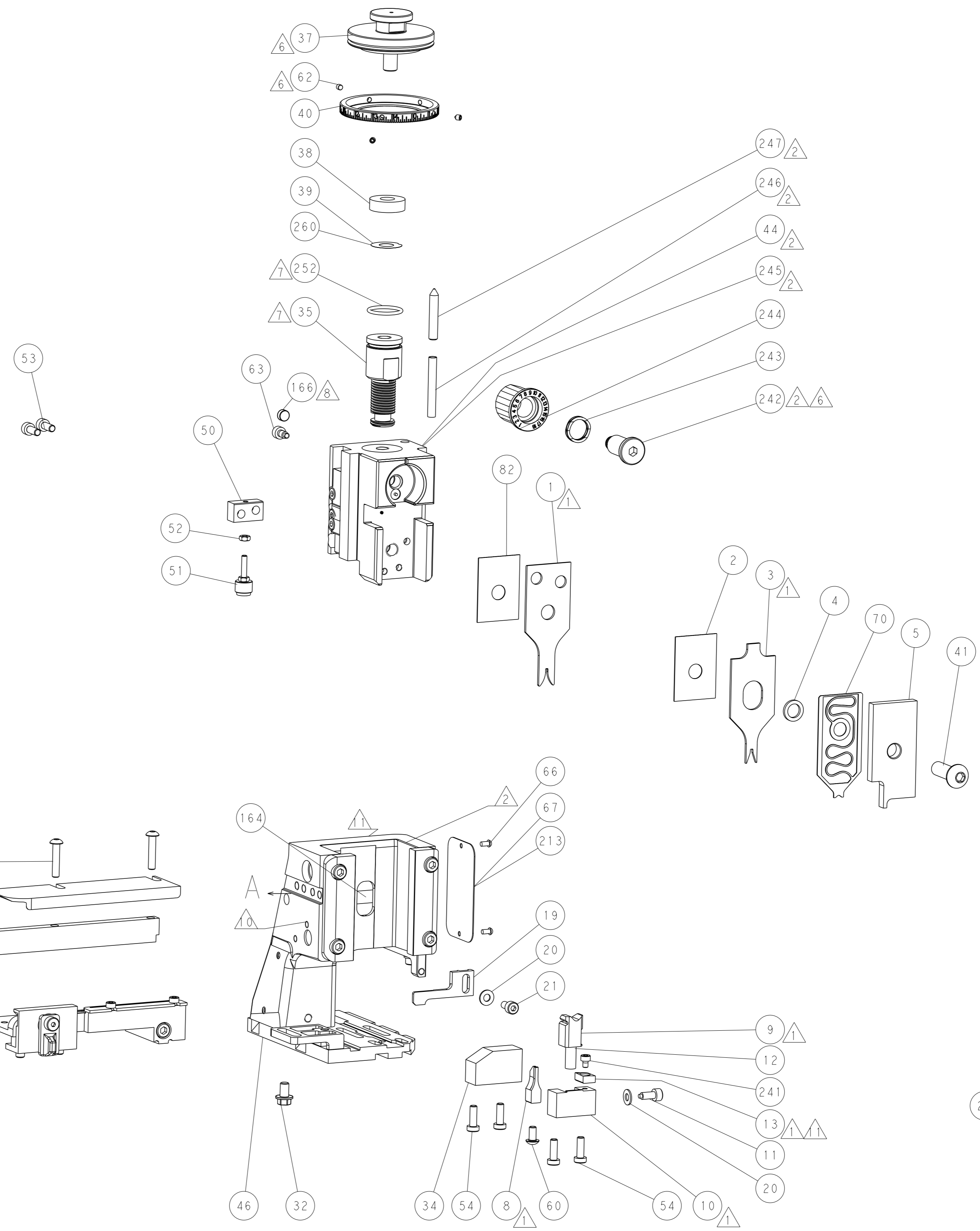
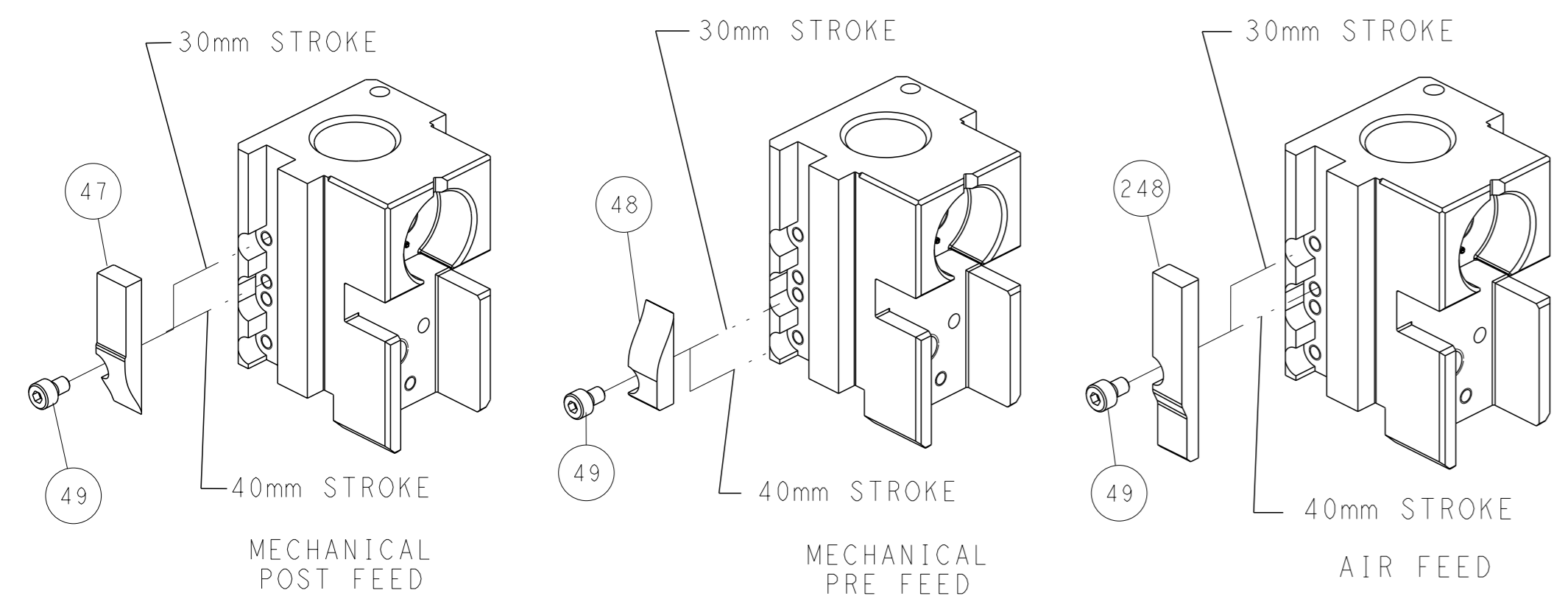
PNEUMATIC



SERVO LATCH PLATE

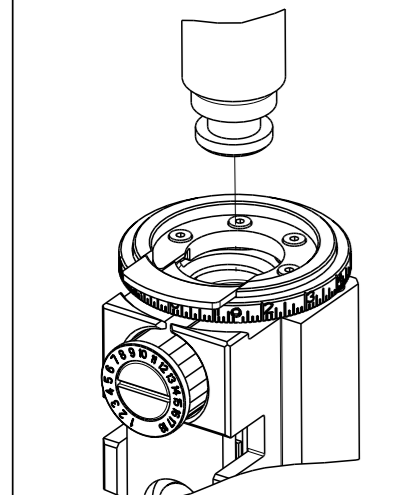



CAM POSITIONS



ATLANTIC VERSION
 Shown on sheets 1 of 4 & 2 of 4
 (Pacific version shown on sheets 3 of 4 & 4 of 4)


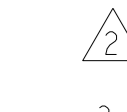
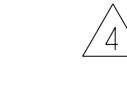
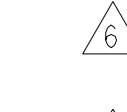




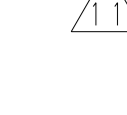
<small>THIS DRAWING IS UNPUBLISHED. RELEASED FOR PUBLICATION BY TYCO ELECTRONICS CORPORATION. ALL RIGHTS RESERVED.</small>		OWN: HOFFNER 24JUNE2015 CBY: T. ELBIN 25JUNE2015 APVD: T. ELBIN 25JUNE2015	TE Connectivity Harrisburg, PA 17105-3608
DIMENSIONS: mm TOLERANCES UNLESS OTHERWISE SPECIFIED: 0 PLC ±.5 1 PLC ±0.13 2 PLC ±0.13 3 PLC ±0.013 4 PLC ±0.001 ANGLES ±.1		NAME: Ocean Side Feed Applicator PRODUCT SPEC: - APPLICATION SPEC: - WEIGHT: -	SIZE: A1 CAGE CODE: 00779 DRAWING NO: C=2266832 RESTRICTED TO: -
MATERIAL: - FINISH: -		SCALE: 1:2 SHEET: 2 of 4 REV: A	Customer Accessible Production Drawing

PACIFIC VERSION TERMINATOR INTERFACE ADAPTER	PART NUMBER	REVISION	DESCRIPTION	FEED TYPE	APPLICATOR STYLE CONVERSION CHART						
					CONVERT TO	PART NUMBERS REQUIRED					
	2-2266832-1	A	FINE CRIMP HEIGHT ADJUST	MECHANICAL	PNEUMATIC FEED	2119950-1	1338685-1	5-18022-5	2119641-2	2119799-1	2063440-1
	2-2266832-2	A	FINE CRIMP HEIGHT ADJUST	PNEUMATIC	SERVO LATCH PLATE	2119951-1	-	8-2266832-5	1901094-3	-	2168400-6 (QUANTITY 2)
					SMART APPLICATOR	2161326-1	-	8-2266832-4	-	-	
					MECHANICAL FEED	2119949-1	1338685-1	5-18022-5	2119653-2	-	
	2-2266832-5	A	FINE CRIMP HEIGHT ADJUST	SERVO LATCH PLATE	MECHANICAL FEED	2119949-1	1338685-1	5-18022-5	2119653-2	-	-
2-2266832-7	A	FINE CRIMP HEIGHT ADJUST	NONE	PNEUMATIC FEED	2119950-1	1338685-1	5-18022-5	2119641-2	2119799-1	2063440-1	
7-2266832-7	A	CRIMP TOOLING KIT	-	-	-	-	-	-	-	-	-

APPLICATOR DATA		
CRIMP	SIZE	TYPE
WIRE	1.30 mm [.051]	F
INSUL	1.70 mm [.067]	F
APPLICATOR INSTRUCTIONS 408-10389 		

TERMINAL DATA: JST TERMINAL	JST CRIMP SPECIFICATION
TERMINAL NAME: TERMINAL, RA CONNECTOR	
WIRE STRIP LENGTH 2.10-2.90 mm [.083-.114 IN]	INSULATION DIAMETER RANGE ∅1.30-1.70 mm [.051-.067 IN]
TERMINAL APPLICATION SPECIFICATION CHM-1-196 Rev 09-06-10	
TERMINALS APPLIED	
TE TERMINAL 286996-1	JST TERMINAL RA-SC1290

WIRE SIZE	CRIMP HEIGHT mm [INCH]	CRIMP HEIGHT REFERENCE SETTING
22 AWG	0.69 +/- 0.025 [.027 +/- .001]	6.6
24 AWG	0.65 +/- 0.025 [.025 +/- .001]	7.0
26 AWG	0.59 +/- 0.025 [.023 +/- .001]	7.7

-  RECOMMENDED SPARE PARTS
-  GREASE BEARING SURFACES LIGHTLY
3. LUBRICATE DAILY PER THE APPLICATOR INSTRUCTION SHEET SUPPLIED WITH THE APPLICATOR.
-  APPLICATOR SPECIFIC DATA TO BE ENTERED INTO BLANK MEMORY CHIP AT ASSEMBLY. SEE BELOW FOR PART NUMBER:
 MECHANICAL FEED WITH "SMART APPLICATOR" CONVERSION: 8-2266832-4
 PNEUMATIC FEED WITH "SMART APPLICATOR" CONVERSION: 8-2266832-4
 SERVO FEED WITH "FINE CRIMP HEIGHT ADJUST": 8-2266832-5
5. ADJUSTMENT OF THE STRIPPER MAY BE REQUIRED WHEN MOVING THE APPLICATOR BETWEEN BENCH AND LEADMAKER APPLICATIONS.
-  APPLY PART NUMBER 1-23419-5 LOCTITE TO THREADS OF ITEM 62. APPLY PART NUMBER 2-23419-6 LOCTITE TO THREADS OF ITEM 242.
-  GREASE THREADS, GROOVE AND O-RING ON ITEMS 139 & 152.
-  MAGNET MUST BE ORIENTED CORRECTLY IN ORDER TO PROPERLY ACTUATE THE COUNTER.
-  CRIMP HEIGHT REFERENCE SETTING WAS THE SETTING USED WHEN THE APPLICATOR WAS QUALIFIED AT THE FACTORY. ADJUSTMENT MAY BE NECESSARY WHEN RUNNING APPLICATOR IN THE FIELD.
-  SPARE FEED CAM STORAGE LOCATION REFER TO INSTRUCTION SHEET FOR ADDITIONAL INFORMATION.
-  TO CONVERT THE APPLICATOR TO A NON-CARRIER CUTTING STYLE, REMOVE ITEM 13 AND ATTACH TO THE LOCATION ON BACK SIDE OF THE HOUSING. REFER TO INSTRUCTION SHEET FOR ADDITIONAL INFORMATION.

*WARNING
ON INSTALLATION, SET WIRE DISC, ITEM 40 TO LARGEST WIRE SIZE SETTING. USE OF SETTINGS BELOW MINIMUM REQUIRED CRIMP HEIGHT SETTING WILL CAUSE DAMAGE TO CRIMP TOOLING.

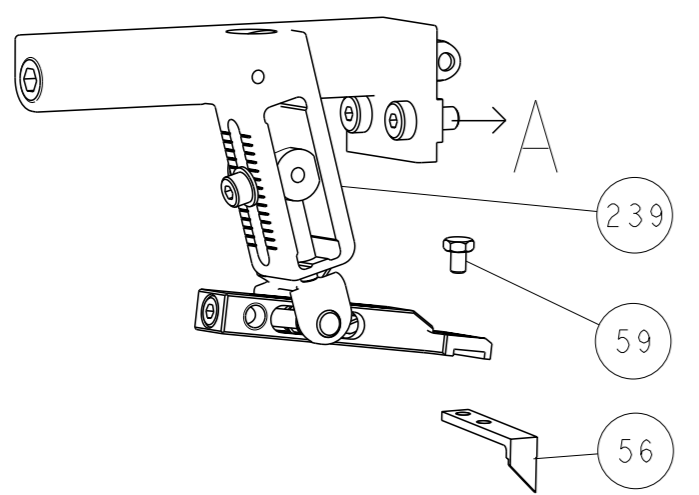
PACIFIC VERSION
Shown on sheets 3 of 4 & 4 of 4
(Atlantic version shown on sheets 1 of 4 & 2 of 4)

SET UP GAUGE 2119599-1				LOC A	DIST 66	REVISIONS					
P	LT#	DATE	DESCRIPTION	DATE	OWN	APVD					
-	-	-	SEE SHEET 1	-	-	-					
-	1	1	1	1	2119782-1	FINE ADJUST HEAD ASM, PACIFIC STYLE	251				
-	-	-	1	-	2119640-1	PUSH ROD, AIR FEED	250				
-	-	-	1	-	2079988-1	BUSHING, LCH5-12, MISUMI	249				
-	1	1	1	1	1-22279-3	SPRING, COMPRESSION	246				
-	1	1	1	1	2119082-4	CAM, SNAIL, INSULATION ADJUSTMENT	244				
-	1	1	1	1	2079764-1	WASHER, WAVE SPRING, CREST-TO-CREST	243				
-	1	1	1	1	2119083-1	RETAINER, INSULATION DIAL	242				
-	1	1	1	1	7-18023-7	SCR, SKT HD CAP M3 X 4.0	241				
-	-	2	-	-	2168400-6	SHCS, LOW HEAD, RoHS, M5 X 16	240				
-	-	-	-	1	2119580-1	MECHANICAL FEED ASSEMBLY	239				
-	-	-	1	-	2063440-1	AIR FEED MODULE	238				
-	-	1	-	-	2119740-2	TAG, IDENTIFICATION	213				
-	-	1	-	-	1901094-3	SPACER, FEEDER	198				
-	-	-	2	-	21045-3	RING, RETAIN, EXTERN, 3/16 CRESCENT	172				
-	1	1	1	1	994969-1	MAGNET, RARE EARTH HIGH ENERGY	166				
-	REF	REF	REF	REF	994970-2	COUNTER, MAGNETIC	164				
-	-	-	1	-	240638-1	SPRING, FEED FINGER	163				
-	1	1	1	1	8-21084-1	O-RING, .801 ID, .070 DIA. MAT.	152				
-	-	-	1	-	2119641-2	FEED CAM, AIR FEED	151				
-	1	1	1	1	2119798-2	DETENT PIN	145				
-	1	1	1	1	2079383-8	SCR, BHSC, RoHS (M4 X 16)	144				
-	4	4	4	4	2168400-5	SHCS, LOW HEAD, RoHS, M4 X 20	143				
-	-	-	-	1	2119653-2	FEED CAM, POST FEED	142				
-	1	1	1	1	1-2119656-0	APPLICATOR BASIC ASSEMBLY, SF	141				
-	1	1	1	1	2119650-1	RAM, ASIAN STYLE, SIDE FEED	140				
-	1	1	1	1	2119092-2	BOLT, ADJUSTMENT	139				
-	-	-	1	-	3-23627-7	PIN, RETAIN, GRVD, 3/16 X .854	137				
-	-	-	1	-	2119799-1	HOLDER, FEED FINGER, AF	136				
-	-	REF	-	-	SEE NOTE 4	MEMORY CHIP, PROGRAMMED	135				
-	-	1	-	-	1633743-1	SERVO FEED LATCH ASM	133				
-	-	REF	-	-	2119944-1	FEED FINGER ASSEMBLY, SF	117				
-	1	1	1	1	455888-4	SPACER, CRIMPER	82				
-	1	1	1	1	2119956-1	DOCUMENTATION PACKAGE	71				
-	1	1	1	1	2119791-5	DEPRESSOR, WIRE	70				
-	1	-	1	1	2119740-1	TAG, IDENTIFICATION	67				
-	2	2	2	2	2168078-1	SCREW, DRIVE, RH, RoHS, 2 x .188	66				
-	1	1	1	1	2119793-1	LIMITER, ADJUSTMENT BOLT	63				
-	3	3	3	3	992763-5	SCR, SET, SOC, CONE POINT, M3 X 4.0	62				
-	-	-	1	1	5-18022-5	SCR, HEX HD CAP, M4 X 6.0	59				
-	-	-	1	1	1338685-1	PAWL, FEED	56				
-	2	2	2	2	1-2168083-0	SCR, SKT HD CAP, RoHS, M4 X 10	53				
-	1	1	1	1	5018030-1	NUT, HEX, REG, RoHS, M3	52				
-	1	1	1	1	811242-5	BUMPER, HOLD DOWN	51				
-	1	1	1	1	690753-2	SPACER, TONKER	50				
-	-	-	1	2	18023-9	SCR, SKT HD CAP M4 X 6.0	49				
-	-	-	-	1	2119652-1	FEED CAM, PRE FEED	48				
-	1	1	1	1	2079383-7	SCR, BHSC, RoHS (M8 X 25)	41				
-	1	1	1	1	2119645-1	DISC, NUMBERED FA WIRE ADJUSTMENT	40				
-	1	1	1	1	2119957-1	APPLICATOR SHIM PACK	39				
-	1	1	1	1	1-2119644-4	RAM WASHER, PRECISION	38				
-	1	1	1	1	1752356-3	SUPPORT, TERMINAL	34				
-	2	2	2	2	2079383-5	SCR, BHSC, RoHS (M4 X 20)	33				
-	1	1	1	1	2161328-1	HEX HEAD, FLANGED, M5 X 8mm LONG	32				
-	1	1	1	1	1320908-6	SPACER, STRIP GUIDE	30				
-	1	1	1	1	2119959-1	ASSEMBLY, STRIP GUIDE	29				
-	1	1	1	1	1320928-2	STRIP GUIDE	24				
-	1	1	1	1	2168083-2	SCR, SKT HD CAP, RoHS, M4 X 8.0	21				
-	2	2	2	2	1-18028-2	WASHER, FLAT, REG M4	20				
-	1	1	1	1	2119533-1	STRIPPER, SIDE FEED	19				
-	1	1	1	1	2119806-1	INSERT, SHEAR	13				
-	1	1	1	1	3-22280-3	SPRING, COMPRESSION	12				
-	1	1	1	1	1-356885-4	STOP, SHEAR	11				
-	1	1	1	1	2119805-1	SHEAR HOLDER, FRONT	10				
-	1	1	1	1	1803095-3	FLOATING SHEAR, FRONT	9				
-	1	1	1	1	5-1803056-6	ANVIL, COMBINATION	8				
-	-	-	-	-	-	-	7				
-	-	-	-	-	-	-	6				
-	1	1	1	1	2119757-4	DEPRESSOR, SHEAR	5				
-	1	1	1	1	2-238011-5	BLOCK, CRIMPER SPACER	4				
-	1	1	1	1	9-1633962-1	CRIMPER, INSULATION F PREMIUM	3				
-	1	1	1	1	455888-4	SPACER, CRIMPER	2				
-	1	1	1	1	9-1633738-1	CRIMPER, WIRE	1				
-77	-27	-25	-22	-21	PART NO	DESCRIPTION	ITEM NO				

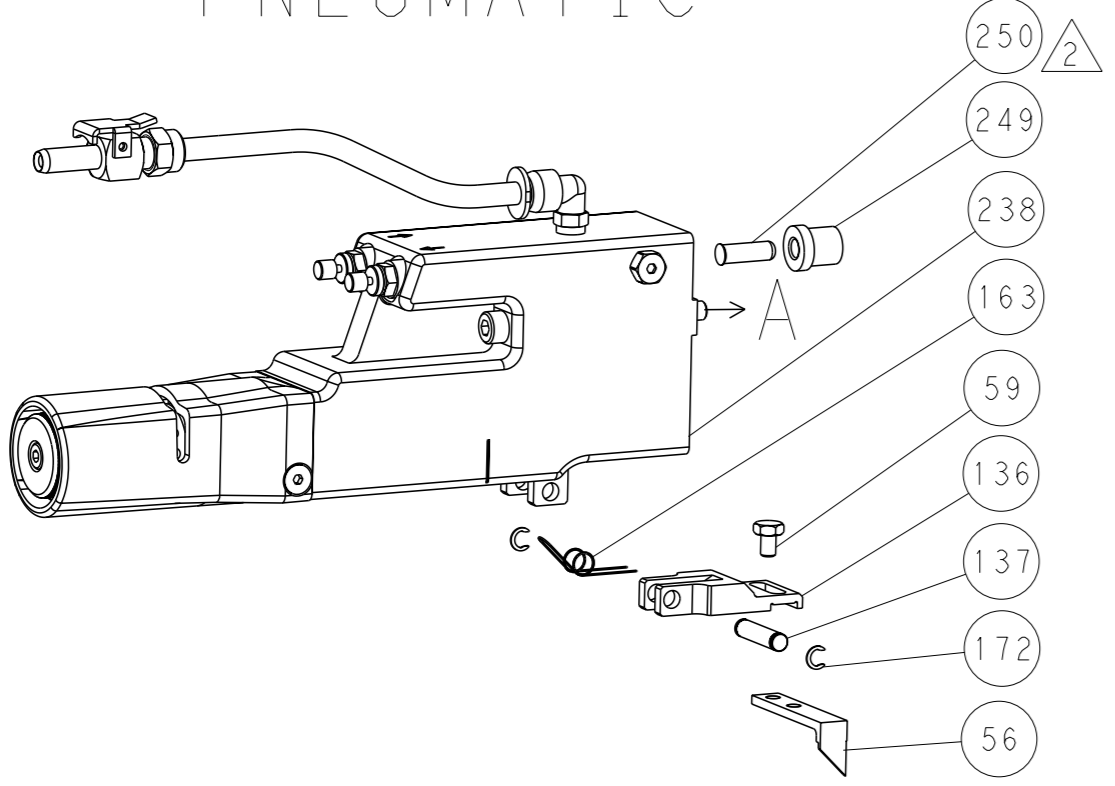
AMP 4805 REV 31MAR2000

LOC		DIST		REVISIONS			
A	66	P	LYR	DESCRIPTION	DATE	OWN	APVD
		-		SEE SHEET 1			

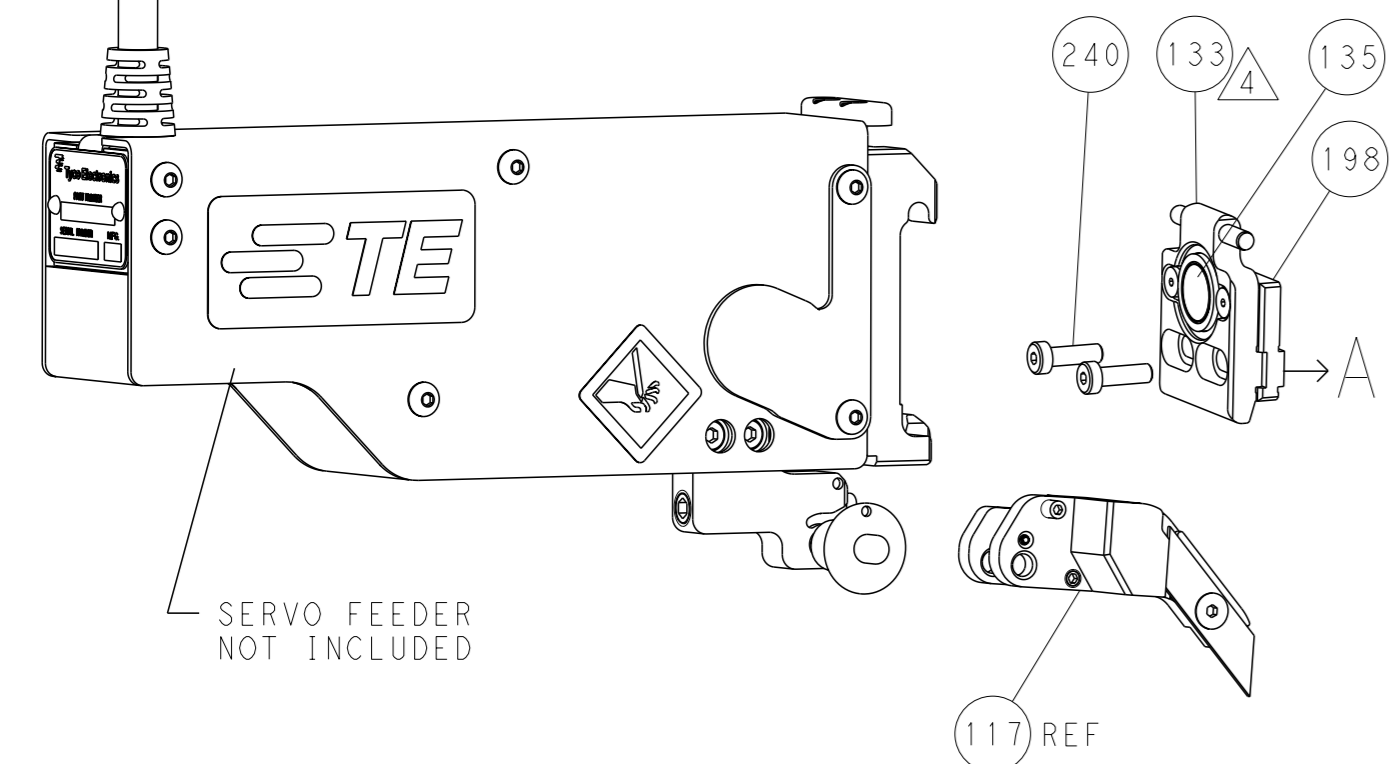
FEED TYPE MECHANICAL



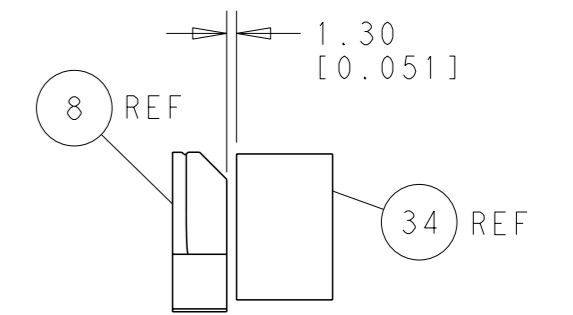
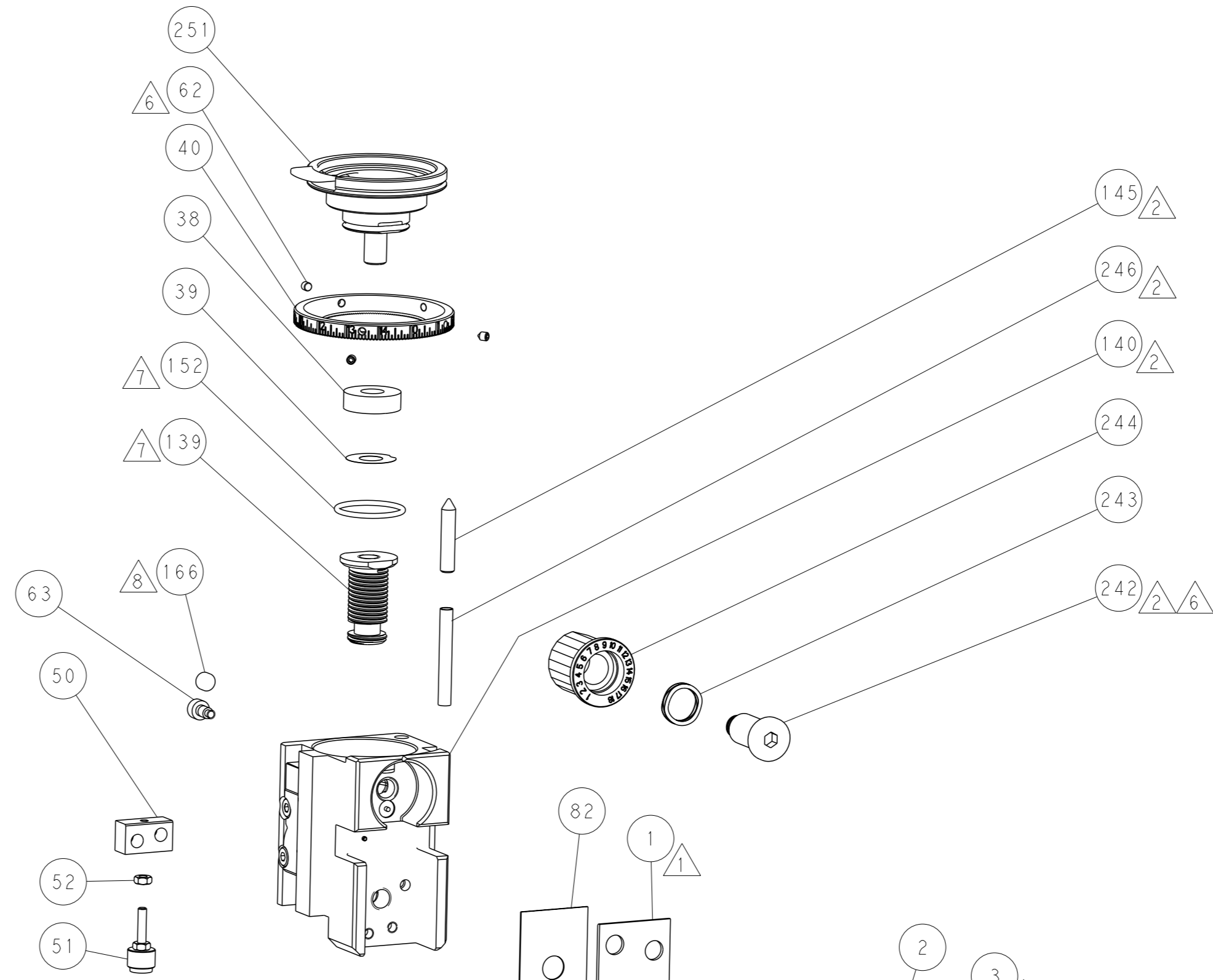
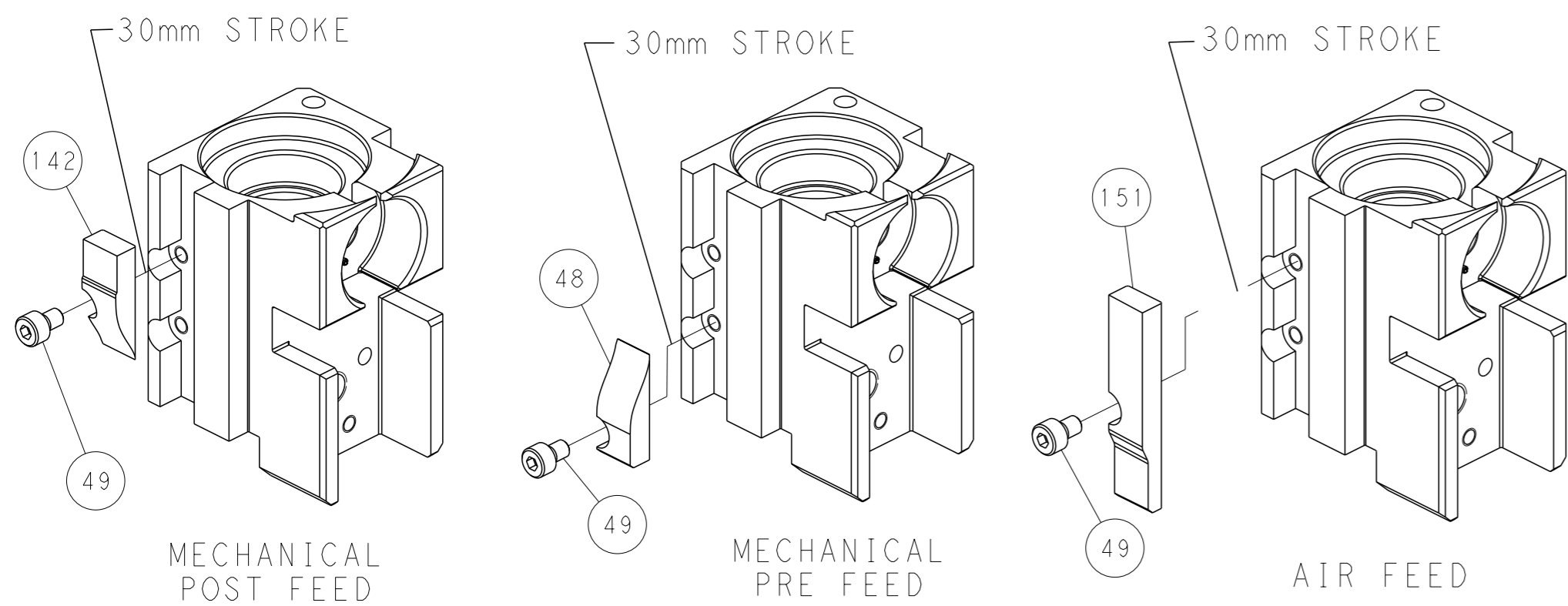
PNEUMATIC



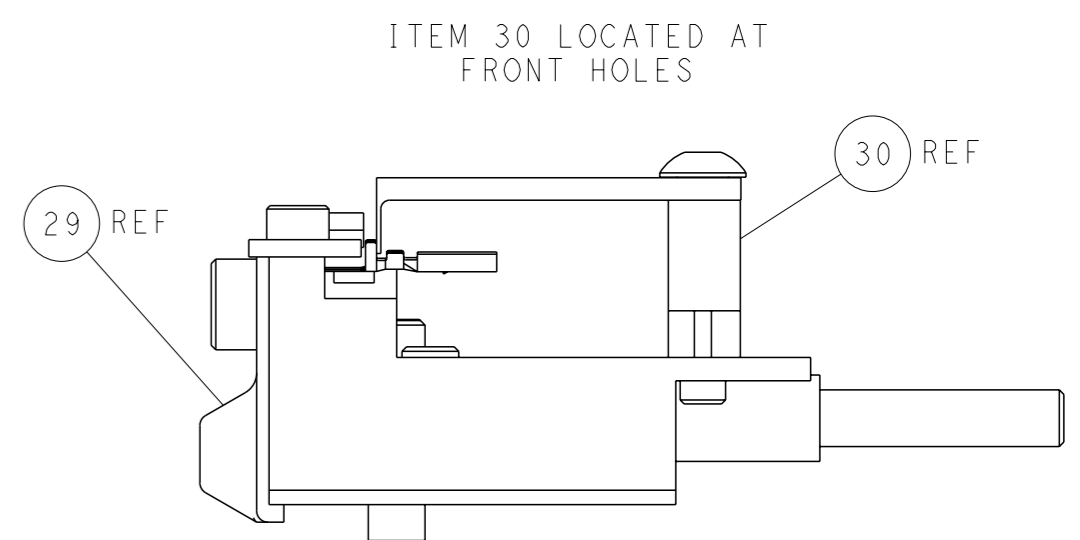
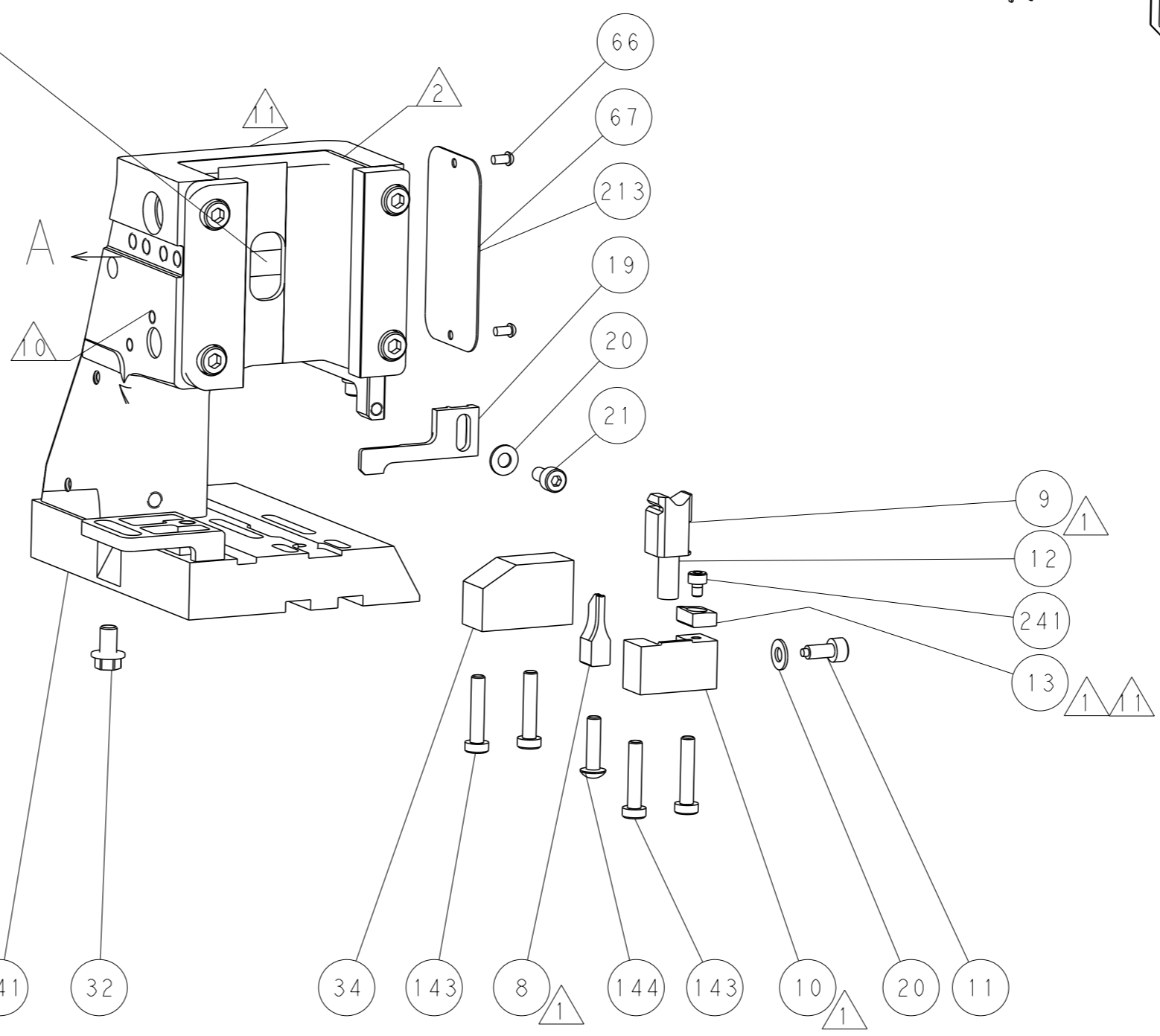
SERVO LATCH PLATE



CAM POSITIONS



TERMINAL SUPPORT LOCATION



FEED TRACK POSITION
GUIDE BY INSULATION BARREL

PACIFIC VERSION
 Shown on sheets 3 of 4 & 4 of 4
 (Atlantic version shown on sheets 1 of 4 & 2 of 4)

<small>THIS DRAWING IS A CONTROLLED DOCUMENT FOR TYCO ELECTRONICS CORPORATION. IT IS SUBJECT TO CHANGE AND THE CONTROLLER ENGINEERING ORGANIZATION SHOULD BE CONTACTED FOR THE LATEST REVISION.</small>		DWN: HOFFNER 24JUNE2015 CHK: TELBIN 25JUNE2015 APVD: TELBIN 25JUNE2015	TE Connectivity Harrisburg, PA 17105-3608
DIMENSIONS: mm TOLERANCES UNLESS OTHERWISE SPECIFIED: 0 PLC ±.5 1 PLC ±0.5 2 PLC ±0.13 3 PLC ±0.013 4 PLC ±0.001 ANGLES FINISH *		NAME: Ocean Side Feed Applicator APPLICATION SPEC: - WEIGHT: - SCALE: 1:2	SIZE: A1 CAGE CODE: 00779 DRAWING NO: C=2266832 RESTRICTED TO: - SHEET 4 OF 4 REV A
MATERIAL: - FINISH: -		Customer Accessible Production Drawing	