

DO NOT SCALE FROM THIS PRINT

THIS PRODUCT MANUFACTURED WITH LEAD-FREE PROCESSING

DESIGNED & DIMENSIONED IN MILLIMETERS [INCHES]

SMA-J-C-X-ST-BH3

GENDER
-J: JACK

TYPE
-C: CABLE

TERMINATION
-BH3: BULKHEAD (MH081 CABLE)

ORIENTATION
-ST: STRAIGHT

PLATING SPECIFICATION
-H: HEAVY GOLD (SEE NOTES 7 & 8)
(SMA-J-C-F-ST-BH3-CBDY)
(SMA-INS-016)
(SMA-SKT-004-H)
(SUB-SMA-J-C-F-ST-BH3)
(SMA-LWAS-001-F)
(SMA-NUT-001-F)

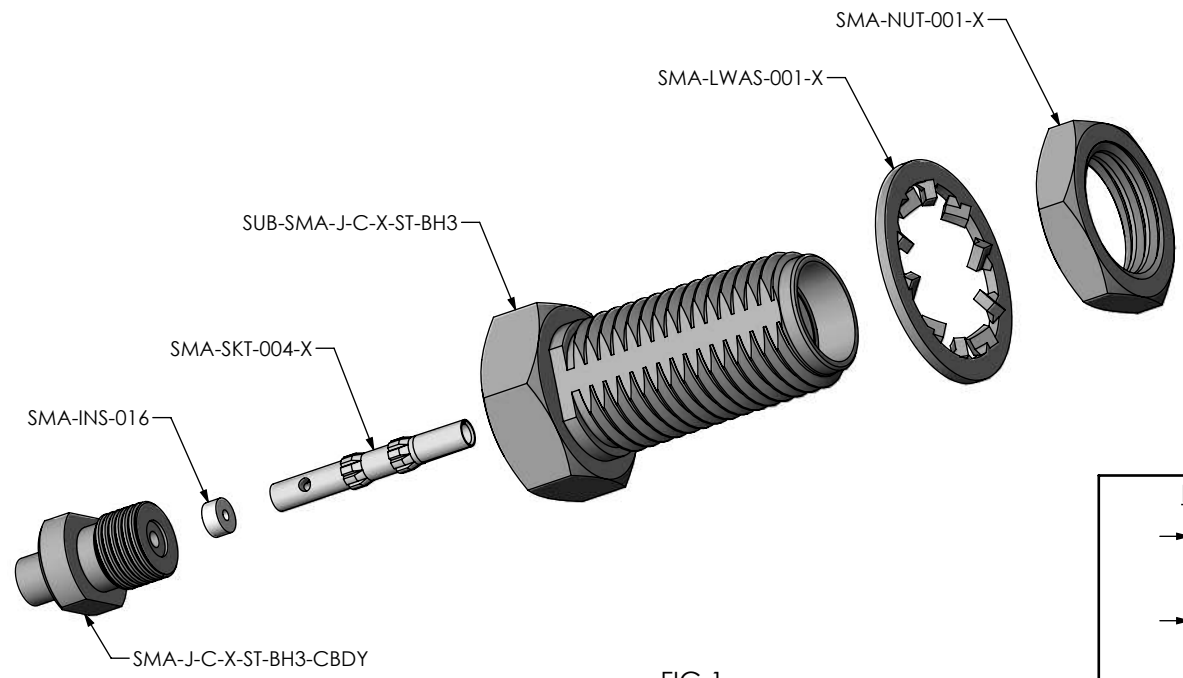
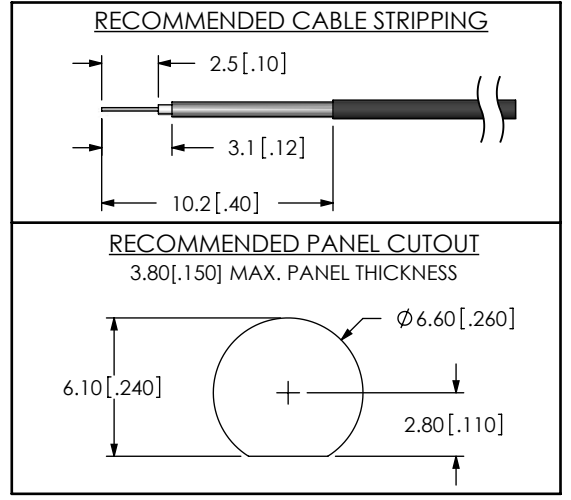


FIG 1
SMA-J-C-X-ST-BH3 SHOWN



- NOTES:
- Ⓢ REPRESENTS A CRITICAL DIMENSION.
 - CENTER CONTACT PUSHOUT FORCE: 13.35 N [3 LB] MIN.
 - SEE SHEET 3 FOR TERMINATION INFORMATION.
 - DELETED NOTE.
 - PRODUCT TO BE PACKAGED PER PACKAGING STANDARD CO-RF-WI-3040-M.
 - ROHS COMPLIANT.
 - PLATING: -F: .00003" MIN GOLD OVER .000050" MIN NICKEL.
-H: .000030" MIN GOLD OVER .000050" MIN NICKEL.
 - ASSEMBLY PLATING DESIGNATIONS:
-H: (CENTER CONTACT)-H
(OUTER CONTACT) -F
(REMAINING METAL PARTS) -F

F:\DWG\MISC\MKTG\SMA-J-C-X-ST-BH3-MKT.SLDDRW

UNLESS OTHERWISE SPECIFIED, DIMENSIONS ARE IN MILLIMETERS [INCHES]. TOLERANCES ARE:

DECIMALS	ANGLES
.X: ±0.3 [.01]	2°
.XX: ±0.13 [.005]	
.XXX: ±0.051 [.0020]	

PROPRIETARY NOTE
THIS DOCUMENT CONTAINS INFORMATION CONFIDENTIAL AND PROPRIETARY TO SAMTEC, INC. AND SHALL NOT BE REPRODUCED OR TRANSFERRED TO OTHER DOCUMENTS OR DISCLOSED TO OTHERS OR USED FOR ANY PURPOSE OTHER THAN THAT WHICH IT WAS OBTAINED WITHOUT THE EXPRESSED WRITTEN CONSENT OF SAMTEC, INC.



520 PARK EAST BLVD, NEW ALBANY, IN 47150
PHONE: 812-944-6733 FAX: 812-948-5047
e-Mail: info@SAMTEC.com code: 55322

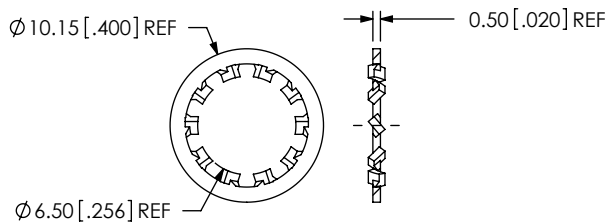
MATERIAL: DO NOT SCALE DRAWING SHEET SCALE: 1:0.333333
SHELL, FERRULE, NUT, WASHER: BRASS
CONTACT: COPPER ALLOY
DIELECTRIC: PTFE

DESCRIPTION: SMA STR JACK BULKHEAD, MH081- 50 OHM

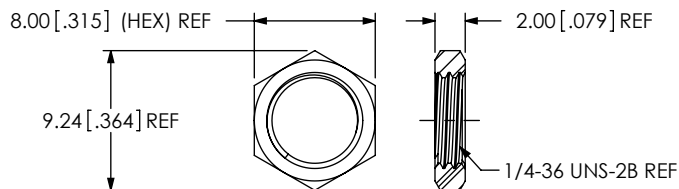
DWG. NO. SMA-J-C-X-ST-BH3

BY: R MUSSER 01/28/2008 SHEET 1 OF 3

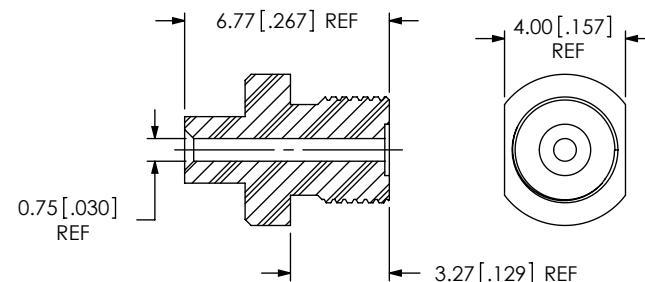
REVISION G



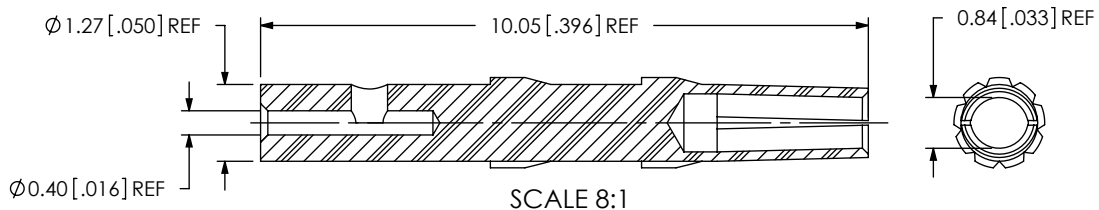
SAMTEC PART NUMBER	ITEM
SMA-LWAS-001-X	LOCK WASHER



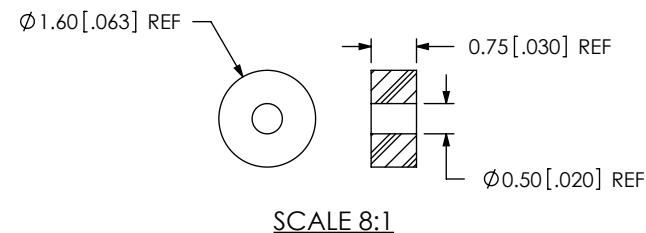
SAMTEC PART NUMBER	ITEM
SMA-NUT-001-X	HEX NUT



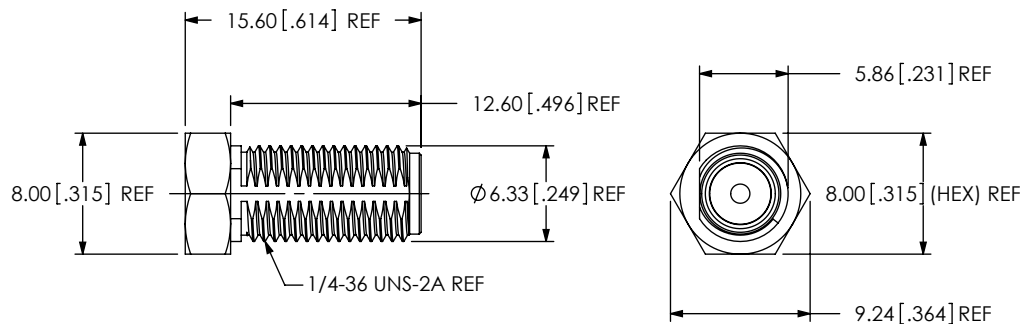
SAMTEC PART NUMBER	ITEM
SMA-J-C-X-ST-BH3-CBDY	REAR THREADED BODY



SAMTEC PART NUMBER	ITEM
SMA-SKT-004-X	SOCKET



SAMTEC PART NUMBER	ITEM
SMA-INS-016	INSULATOR



SAMTEC PART NUMBER	ITEM
SUB-SMA-J-C-X-ST-BH3	SUB ASSEMBLY

F:\DWG\MISC\MKTG\SMA-J-C-X-ST-BH3-MKT.SLDDRW

PROPRIETARY NOTE

THIS DOCUMENT CONTAINS INFORMATION CONFIDENTIAL AND PROPRIETARY TO SAMTEC, INC. AND SHALL NOT BE REPRODUCED OR TRANSFERRED TO OTHER DOCUMENTS OR DISCLOSED TO OTHERS OR USED FOR ANY PURPOSE OTHER THAN THAT WHICH IT WAS OBTAINED WITHOUT THE EXPRESSED WRITTEN CONSENT OF SAMTEC, INC.

DO NOT SCALE DRAWING

SHEET SCALE: 2:1

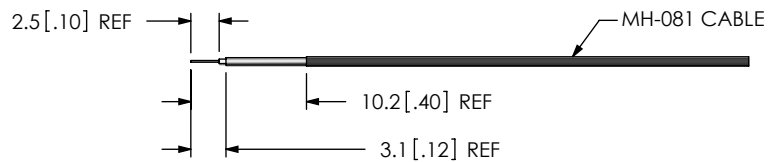


520 PARK EAST BLVD, NEW ALBANY, IN 47150
 PHONE: 812-944-6733 FAX: 812-948-5047
 e-Mail: info@SAMTEC.com code: 55322

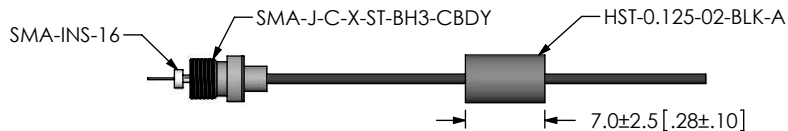
DESCRIPTION:
 SMA STR JACK BULKHEAD, MH081 - 50 OHM

DWG. NO.
 SMA-J-C-X-ST-BH3

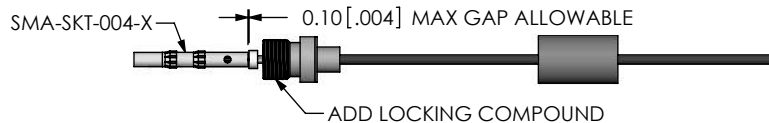
BY: R MUSSER 01/28/2008 SHEET 2 OF 3



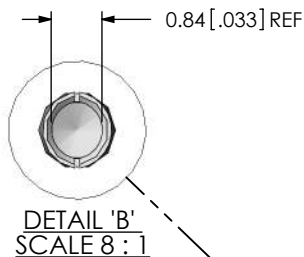
STRIP AND TIN INNER AND OUTER CONDUCTOR



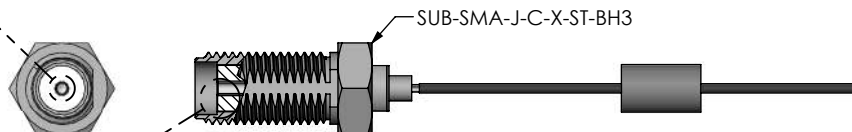
ADD HEAT SHRINK TUBE, REAR THREADED BODY, AND INSULATOR



SOLDER SIGNAL SOCKET AND APPLY LOCTITE 680 TO THREADS



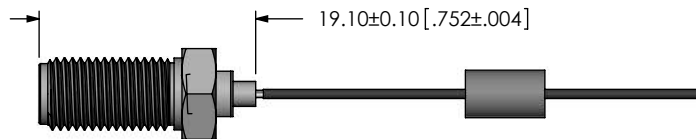
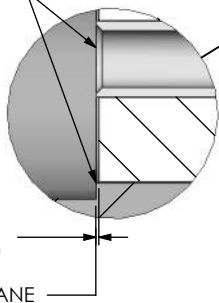
TIP OF CONTACT TO BE FLUSH WITH REFERENCE PLANE OR RECESSED 0.10 [.004] MAX.



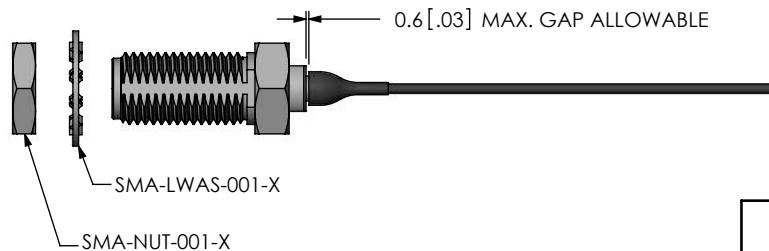
ADD SUB-SMA-J-C-X-ST-BH3 & TIGHTEN REAR-THREADED BODY TO 10 IN-LBS

0.05 [.002] REF (TO INSULATOR)

REFERENCE PLANE



SOLDER SHIELD



APPLY HEAT SHRINK TUBING

F:\DWG\MISC\MKTG\SMA-J-C-X-ST-BH3-MKT.SLDDRW

PROPRIETARY NOTE

THIS DOCUMENT CONTAINS INFORMATION CONFIDENTIAL AND PROPRIETARY TO SAMTEC, INC. AND SHALL NOT BE REPRODUCED OR TRANSFERRED TO OTHER DOCUMENTS OR DISCLOSED TO OTHERS OR USED FOR ANY PURPOSE OTHER THAN THAT WHICH IT WAS OBTAINED WITHOUT THE EXPRESSED WRITTEN CONSENT OF SAMTEC, INC.

DO NOT SCALE DRAWING

SHEET SCALE: 1.5:1



520 PARK EAST BLVD, NEW ALBANY, IN 47150
PHONE: 812-944-6733 FAX: 812-948-5047
e-Mail: info@SAMTEC.com code: 55322

DESCRIPTION:
SMA STR JACK BULKHEAD, MH081 - 50 OHM

DWG. NO.
SMA-J-C-X-ST-BH3

BY: R MUSSER 01/28/2008 SHEET 3 OF 3