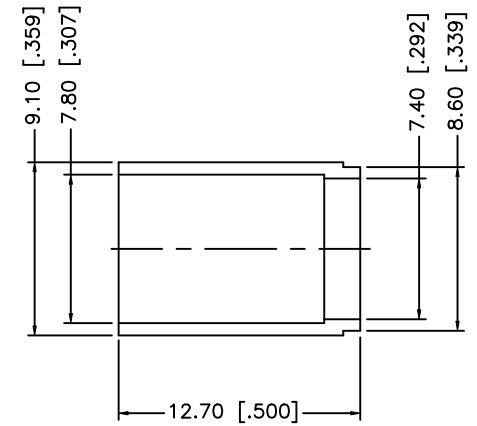
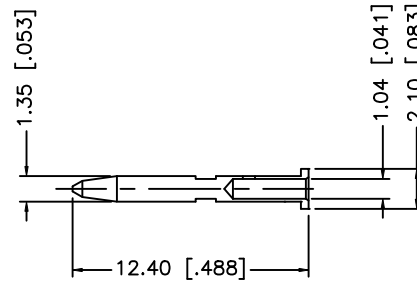
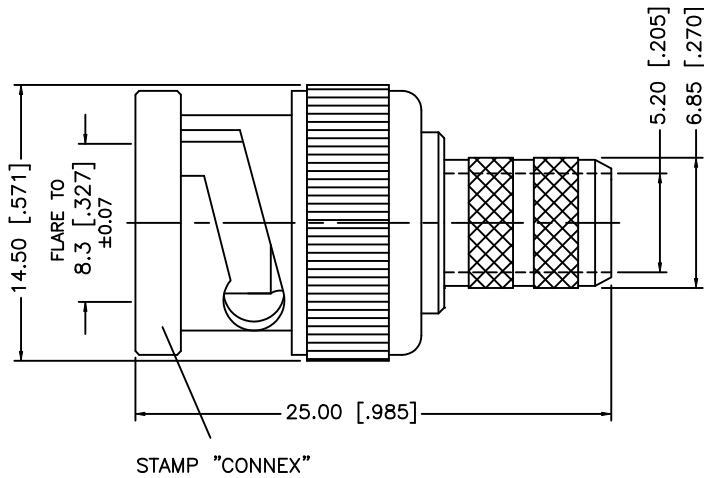
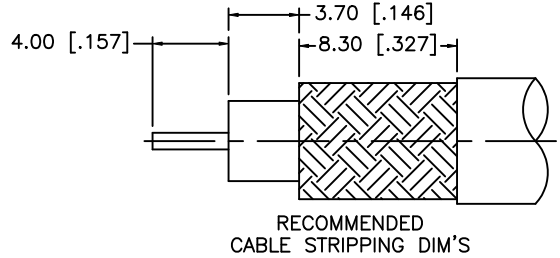


REV.	DATE	ECR NO.	DESCRIPTION
NC	04/03/97	-	INITIAL RELEASE
A	05/01/04	-	UPDATE DRAWING FORMAT
B	10/27/08	-	ADD NOTES 1 AND 2



NOTES:

1. CRIMP FERRULE HEX CRIMP SIZE .320" [8.13]
2. CRIMPED CONTACT PIN SQ. CRIMP .043" [1.09] OR 12 INDENT CRIMP.

REV.	DATE	ECR NO.	DESCRIPTION
8			
7			
6			
5			
4	FERRULE	COPPER	NICKEL 1
3	CONTACT PIN	BRASS	GOLD 1
2	INSULATOR	PTFE	NATURAL 1
1	BODY	BRASS	NICKEL 1
	DESCRIPTION	MATERIAL	FINISH QTY

UNLESS OTHERWISE SPECIFIED DIMENSIONS ARE IN MILLIMETERS. DIMENSIONS IN [] ARE IN INCHES AND FOR CUSTOMER REFERENCE ONLY.		APPROVALS	DATE	<h1 style="color: blue; text-align: center;">Amphenol Connex</h1> <p style="text-align: center;">BNC CRIMP PLUG (RG6 PLENUM/BELDEN 1694A)</p>
UNLESS OTHERWISE SPECIFIED TOLERANCES FOR MILLIMETERS ARE: 0.5 - 8mm ± 0.20mm 8 - 30mm ± 0.40mm 30 - 120mm ± 0.50mm		DRAWN	GRS 10/27/08	
UNLESS OTHERWISE SPECIFIED TOLERANCES FOR INCHES ARE: .020 - .315 = ± 0.007" .315 - 1.180 = ± 0.015" 1.180 - 4.724 = ± 0.020"		CHECKED		
DO NOT SCALE DRAWING		ISSUED		
		SHEET	1 OF 1	
		CAD FILE	C:/112/112957.DWG	PART DESCRIPTION
				PART NO.
				112957
				DWG. NO.
				112957.DWG
				REV. B
				SIZE A
				SCALE NA