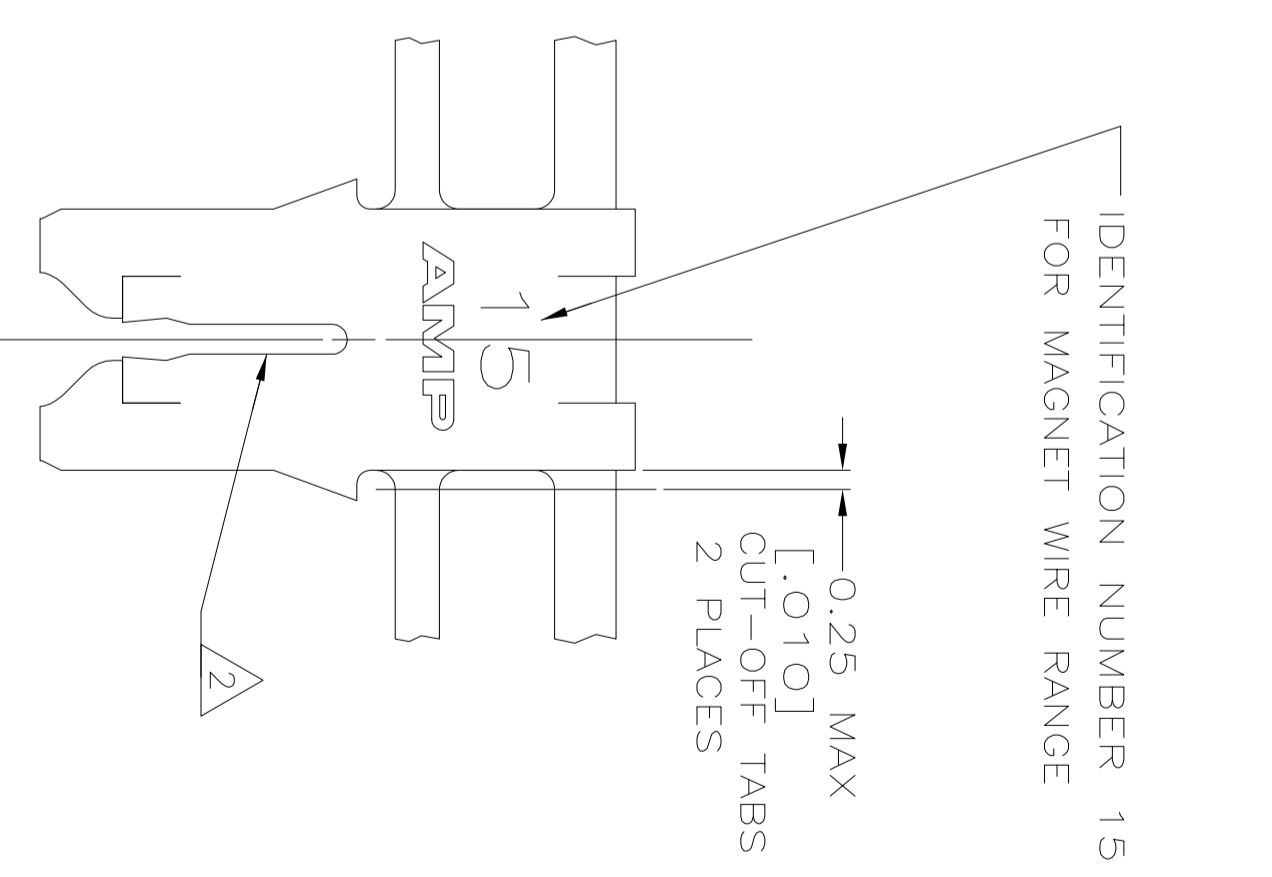
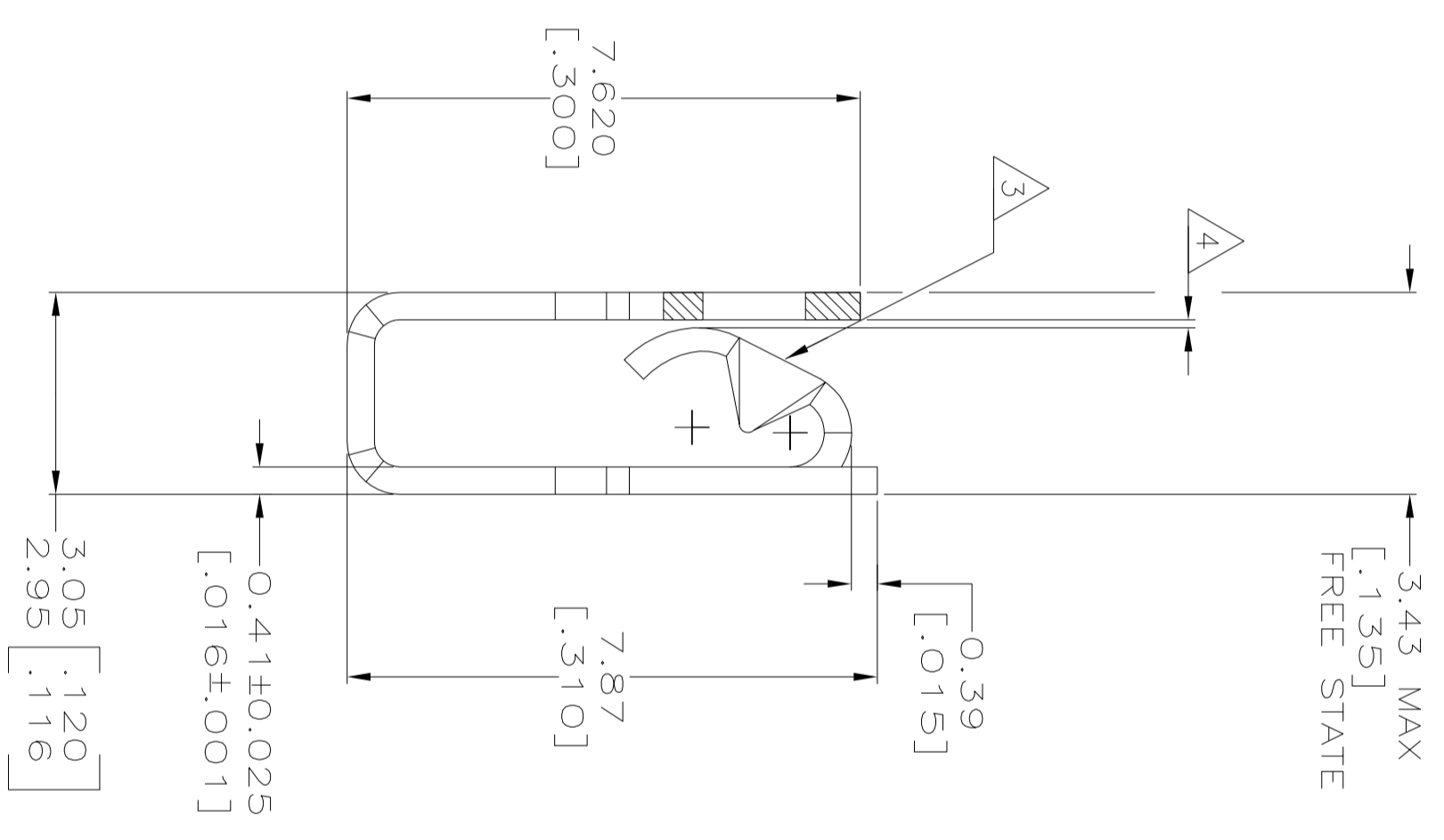
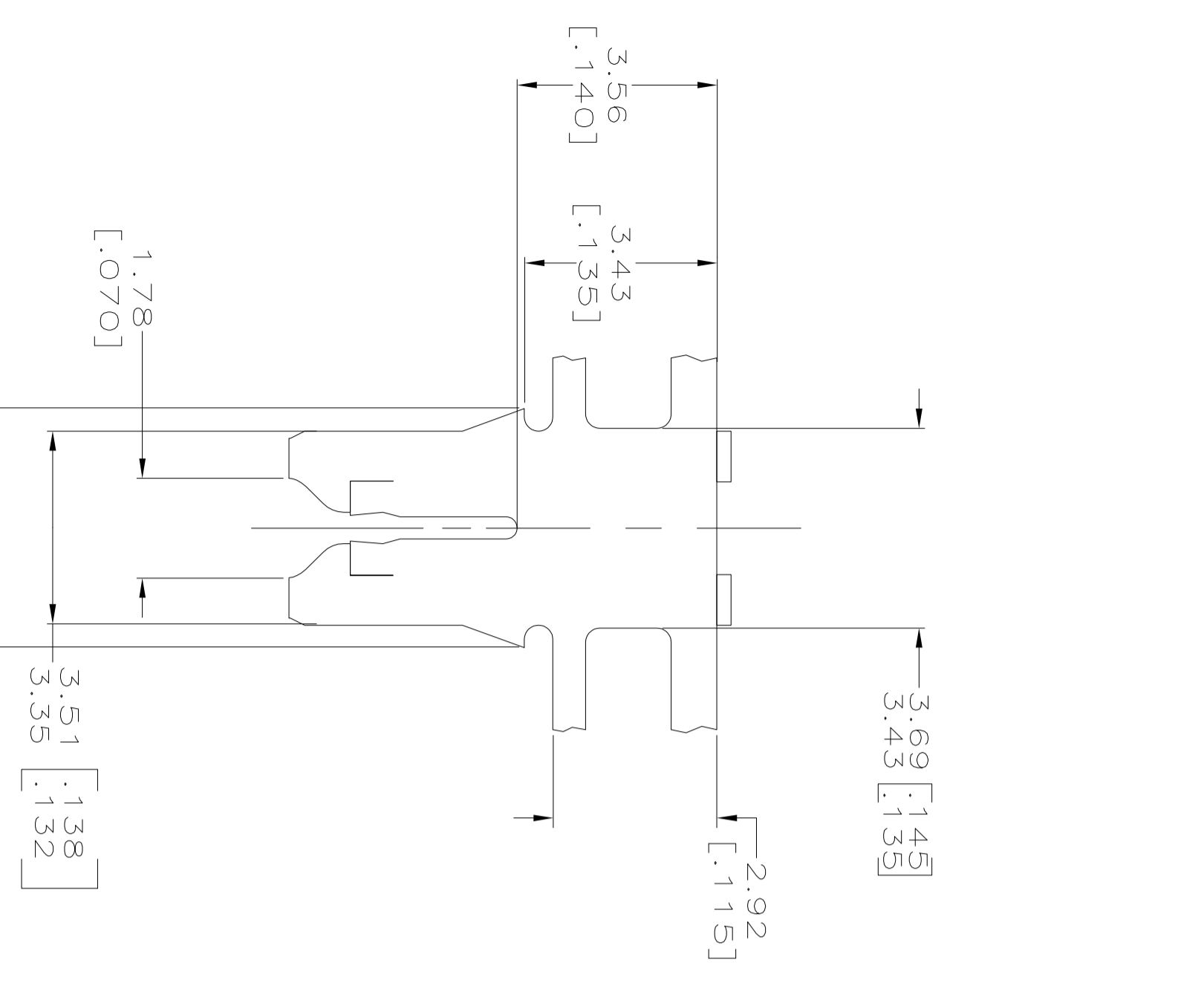
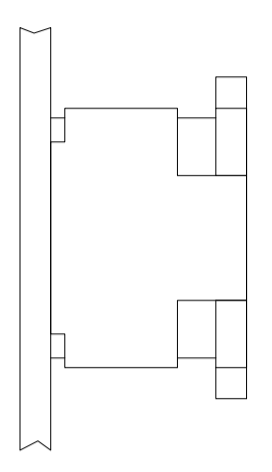


REVOLUTIONS		DATE	BY	APP'D
AF	50			
A2		26DEC12	CX	LL

- 1 CONTINUOUS STRIP ON REELS WITH TERMINALS LOCATED ON 5.59±0.08 [.220±.003] CENTERS
- 2 SLOT ACCEPTS A 0.54-0.64mm [#23.5-#22] AWG COPPER MAGNET WIRE.
- 3 MATES WITH STANDARD MAG-MATE STYLED POKE-IN TAB TERMINAL.
- 4 WHEN FREE STATE IS COMPRESSED TO 3.23 [.127] DIMENSION GAP BETWEEN SPRING AND CARRIER IS TO BE 0.30 [.012] MAX.
- 5 0.002032 [.000080] MIN TIN OVER 0.00127 [.000050] MIN NICKEL UNDERPLATE.
- 6 PRELIMINARY - NOT FOR PRODUCTION



OBSOLETE	REVERSED	1217190-2/6
OBSOLETE	STANDARD	1217190-1

REELING PART NUMBER

DMN MICHAEL S. FEHER 19NOV1999
 CHK KURT A. RANDOLPH 22NOV1999
 APVD KURT A. RANDOLPH 22NOV1999

THIS DRAWING IS A CONTROLLED DOCUMENT.
 DIMENSIONS: mm [INCHES]
 TOLERANCES UNLESS OTHERWISE SPECIFIED:
 0 PLC ±
 1 PLC ± 0.25 [.010]
 2 PLC ±
 3 PLC ±
 4 PLC ±
 ANGLES ±

MATERIAL 4M BRASS
 FINISH 5

PRODUCT SPEC 108-2012
 APPLICATION SPEC 114-2046
 WEIGHT -
 CUSTOMER DRAWING

SIZE A2
 Q&E CODE 00779
 DRAWING NO. 1217190
 SCALE 10:1
 SHEET 1 of 1
 REV A2