

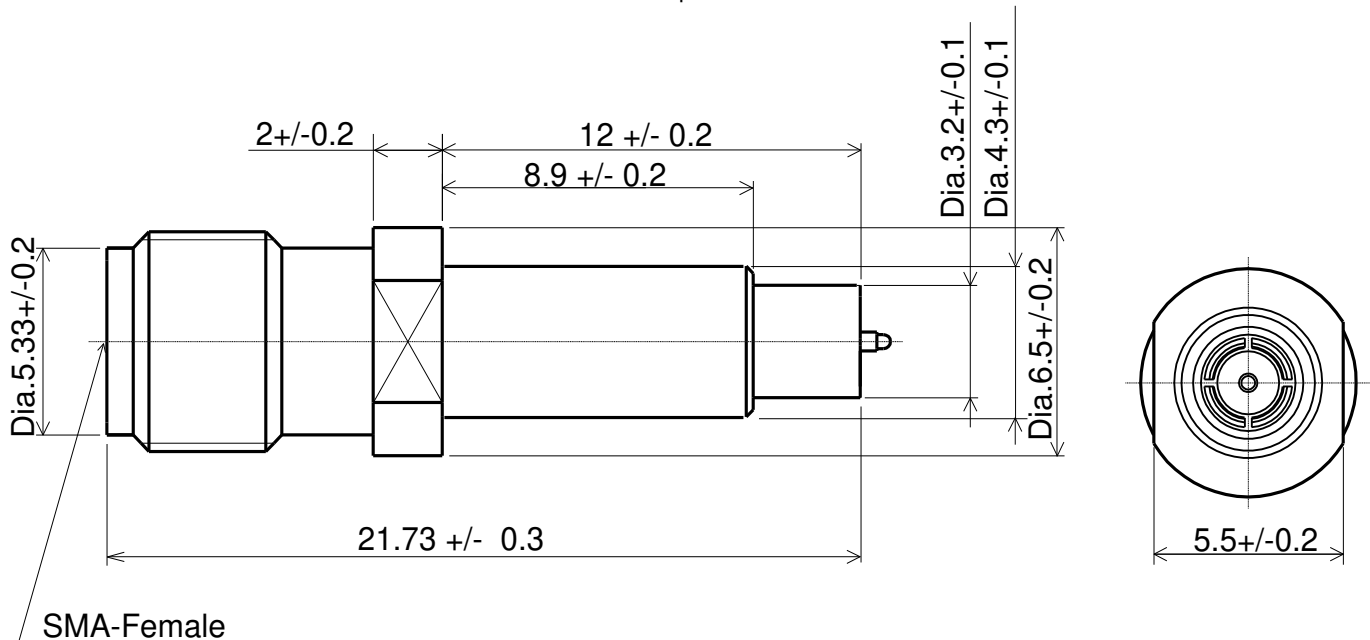
SPECIFICATION

1. MECHANICAL

B>

Manual measurement probe for SWD and SWF.

MM1216054 and MM1216059 are used as calibration adapter



Scale: Free
 Tolerance Unless
 Otherwise Specified: +/- 0.2
 Unit: mm

2. RATING:

Item	Specification
Voltage Rating	30V r.m.s. maximum
Nominal Frequency Range	DC to 6GHz
Nominal Impedance	50Ω
Temperature Rating	-40°C to +90°C
Insulation Resistance	500 MΩ minimum
B> Withstanding Voltage	No evidence of breakdown in AC 300V r.m.s, 1 minute
Initial Contact Resistance (without conductor resistance)	Center contact 25.0mΩmax. Outer contact 20.0mΩmax.
Voltage Standing Wave Ratio (V.S.W.R.)	Meet the requirements of following spec. 1.3max.(DC to 3GHz) 1.6max.(3GHz to 6GHz)
A> Insertion loss	0.4dBmax.(DC~3GHz) 0.6dBmax.(3GHz ~6GHz)
Durability	10K cycles
Engage and disengage force. (PROBE side only)	a. Engagement 30N maximum b. Disengagement 5N minimum 40N maximum