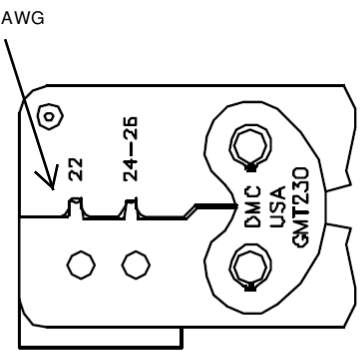
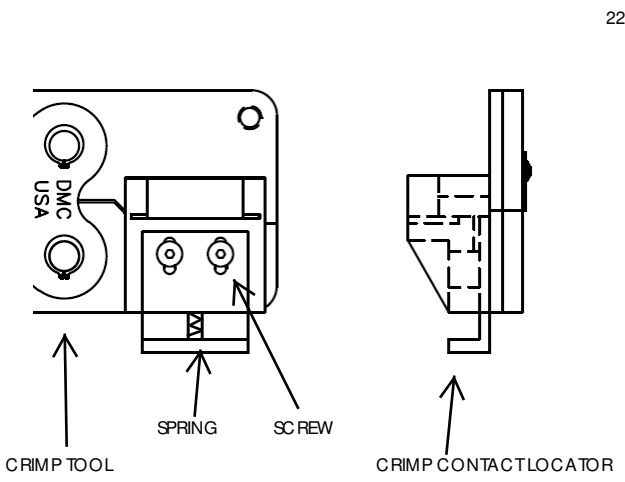
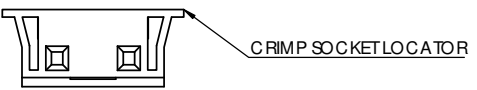
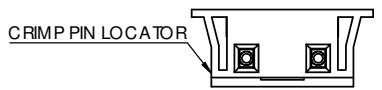
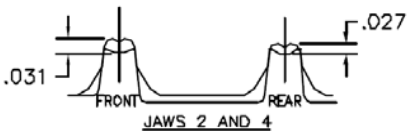
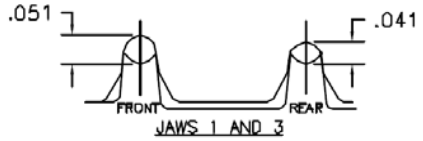
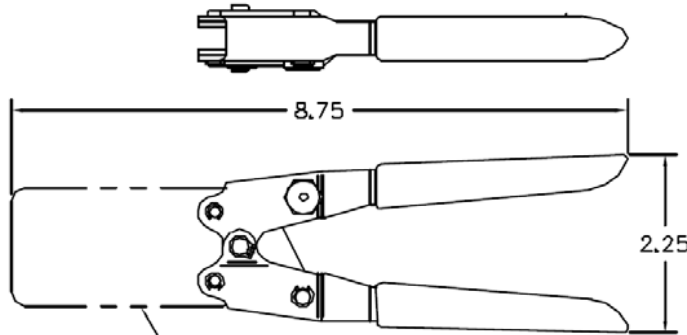


REVISIONS			
REV	DESCRIPTION, ECN, EAR NO.	DATE	APP'D
B	UPDATED SALES DRAWING	JUL03/19	S.M



VIEW "A"

NOTES:

1. CRIMP PIN LOCATOR TO BE USED WITH PIN CONTACT ONLY
2. CRIMP SOCKET LOCATOR TO BE USED WITH SOCKET CONTACT ONLY
3. PLEASE REFER TO APPLICATION SPECIFICATION NO. S6147C



AMPHENOL PART No. FLH-CT-0-01

UNLESS SPECIFIED OTHERWISE	DRAWN	B.COPPING	DEC03/18
PRIMARY UNITS MILLIMETERS	CHECKED	S.MUGAN	DEC03/18
SECONDARY REFERENCE IN PARENTHESES	M.E. APP'D		
GENERAL TOLERANCES	Q.A. APP'D		
1 DECIMAL PLACE	DWG APPR.		
2 DECIMAL PLACES	ENG. REL. NO.		
3 DECIMAL PLACES	REF.		
ANGULAR DEGREES	THIRD ANGLE PROJECTION		DO NOT SCALE DRAWING

Amphenol Canada Corp.
Commercial Products

FLH CRIMP TOOL ASSY

DWG. NO. **P-FLH-CT-0-01** REV **B**

CODE ID NO. 03554 DWG SIZE: X SCALE: 5:1 SHEET 1 OF 1