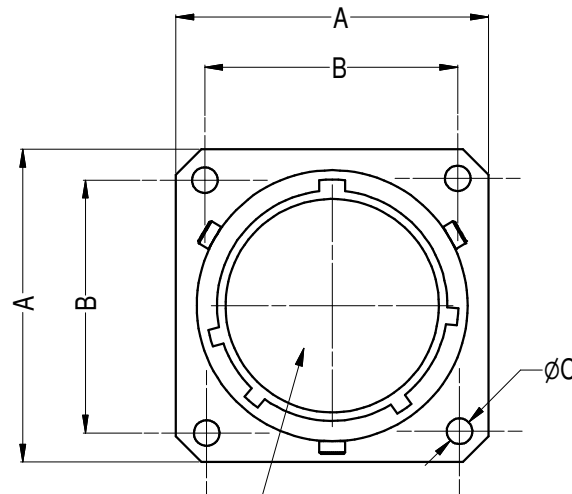
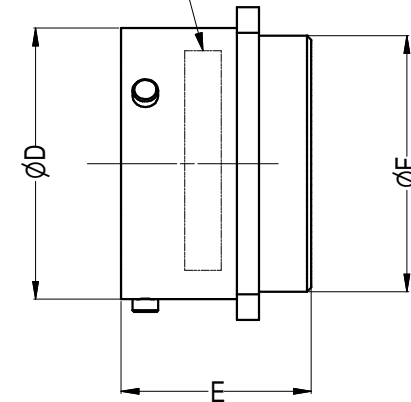


ISOMETRIC VIEW



CONTACTS NOT SHOWN  
FOR No OF CONTACTS REFER TO TABLE

Amphenol Logo & PART No.



Parts List, Dimensions in mm

ITEM	CATALOGUE P/No	No. OF CONTACT	A	B	DIA C	DIA D	E	DIA F
1	MP- 6212- 39S	39	36.6	29.4	3.05	31.8	22.8	30.0
2	MP- 6212- 61S	61	43.0	35.0	3.74	38.1	22.8	36.4

**NOTES:**

1. MATERIAL AND FINISH: DIE CAST ALUMNUM ALLOY, BLACK FINISH
2. SUPPLIED WITH GOLD PLATED SOLDER SOCKET CONTACTS

**CUSTOMER DRAWING**

REV.	CHANGE DETAILS	BY	DATE	CHG No
3	CHANGE FINISH TO BLACK COATING	T.N	17/ 02/ 06	8478
2	SEE CHANGE NOTE 8422	T.N	09/ 09/ 05	8422
1	CHANGE FINISH FROM PLATING TO COATING	L.V	16/ 04/ 2004	8277
0	FIRST ISSUE	T.N	6/ 02/ 2004	---

UNLESS OTHERWISE SPECIFIED TOLERANCE TO BE: LINEAR: X ± N/A, X.X ± N/A, X.XX ± N/A ANGULAR: X' ± 1, X'X' ± 30', X'X'X' ± 15'		THIS DOCUMENT IS THE PROPERTY OF AMPHENOL AUSTRALIA PTY. LTD.. NO PART THEREOF MAY BE REPRODUCED AND USED WITHOUT THE PRIOR WRITTEN CONSENT OF THE OWNER				CAD FILE: 55010272000213		DRN: T.N	DATE: 6/ 02/ 2004	TITLE: PANEL RECP PLUG WITH SOCKET SOLDER CONTACTS		<b>Amphenol</b> Amphenol Australia Pty Ltd, 2 Fireways Blvd, Keysborough, Vic3173 DRAWING NO: 55010272- 000- 2 SHEET: 2/ 2
BREAK ALL SHARP EDGES AND REMOVE ALL BURRS		MATERIAL: SEE NOTE 1		CKD: P.M		DATE: 20/ 02/ 06		APP'D: P.M		DATE: 20/ 02/ 06		
DO NOT SCALE		FINISH: SEE NOTE 1		APP'D: P.M		DATE: 20/ 02/ 06		PART No: SEE TABLE		SIZE: A4		
DIMENSIONS IN MILLIMETRES				THIRD ANGLE PROJECTION		SCALE:		PART No: SEE TABLE		SIZE: A4		