

QUICK CONNECT SELECTION GUIDE



BU-190170031



BU-190230005



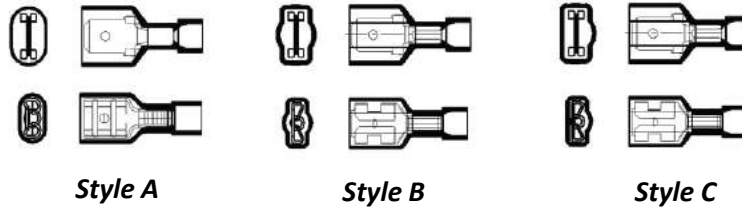
BU-190170047



AI-50207

- Mueller offers a wide range of quick connects that are suitable for a variety of applications.
- 3 different wire ranges
 - 12-10AWG
 - 16-14AWG
 - 22-18AWG
- 3 different tab sizes in both male and female
 - .250 X .032
 - .187 X .032
 - .187 X .020
- 4 different insulation styles
 - Nyax heat shrink
 - Nylon (fully insulated and partially insulated)
 - Vinyl
- Terminals are made of 260 hard brass with electro-tin plating
- Rated Voltage: 300V
- Single crimp terminals
- Solid or stranded wire accepted
- Recommended strip length: 1/4"

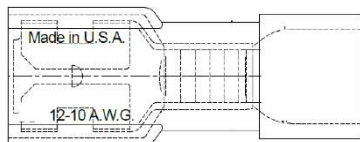
Fully Insulated Style Guide
(Refer to "style" column in tables below)



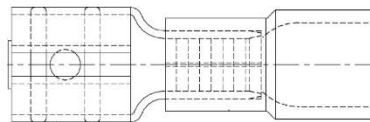
12-10AWG QUICK CONNECTS

| PART NUMBER | AWG SIZE | MALE/FEMALE | TAB SIZE | INSULATION MATERIAL | FULLY INSULATED | STYLE | Temp Rating (°C) |
|---------------|----------|-------------|--------------------|---------------------|-----------------|-------|------------------|
| AI-70213 | 12-10 | FEMALE | .250 X .032 | NYAX HEAT SHRINK | YES | N/A | 125 |
| AI-20167N* | 12-10 | FEMALE | .187 X .032 | NYLON | PARTIAL | N/A | 75 |
| AI-50187N | 12-10 | FEMALE | .250 X .032 | NYLON | PARTIAL | N/A | 75 |
| AI-50213 | 12-10 | FEMALE | .250 X .032 | NYLON | YES | B | 75 |
| BU-190070040* | 12-10 | FEMALE | .250 X .032 (FLAG) | NYLON | YES | N/A | 105 |
| AI-20167* | 12-10 | FEMALE | .187 X .032 | VINYL | PARTIAL | N/A | 75 |
| BU-190170047 | 12-10 | FEMALE | .250 X .032 | VINYL | PARTIAL | N/A | 75 |
| AI-70212 | 12-10 | MALE | .250 X .032 | NYAX HEAT SHRINK | YES | N/A | 125 |
| AI-50186N* | 12-10 | MALE | .250 X .032 | NYLON | PARTIAL | N/A | 75 |
| AI-50212 | 12-10 | MALE | .250 X .032 | NYLON | YES | B | 75 |
| BU-190230008* | 12-10 | MALE | .250 X .032 | VINYL | PARTIAL | N/A | 75 |

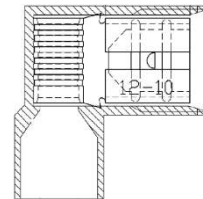
FULLY INSULATED



PARTIALLY INSULATED



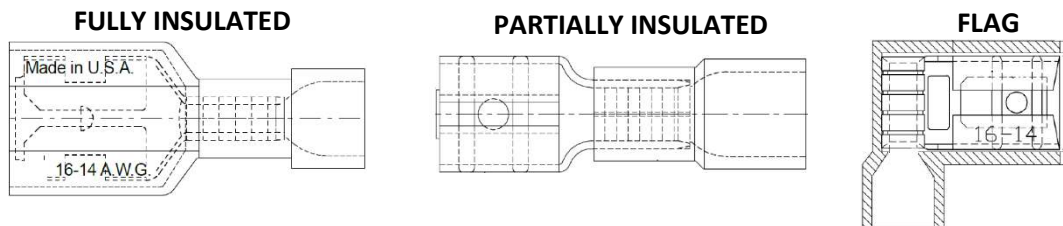
FLAG



*UL LISTED -ALL DIMENSIONS ARE IN INCHES --CELL COLOR DEPICTS INSULATION COLOR

16-14AWG QUICK CONNECTS

| PART NUMBER | AWG SIZE | MALE/FEMALE | TAB SIZE | INSULATION MATERIAL | FULLY INSULATED | STYLE | TEMP RATING (°C) |
|---------------|----------|-------------|--------------------|---------------------|-----------------|-------|------------------|
| AI-70209 | 16-14 | FEMALE | .250 X .032 | NYAX HEAT SHRINK | YES | N/A | 125 |
| BU-190030040* | 16-14 | FEMALE | .250 X .032 | NYLON | YES | A | 105 |
| AI-50209 | 16-14 | FEMALE | .250 X .032 | NYLON | YES | B | 75 |
| BU-19005-005 | 16-14 | FEMALE | .250 X .032 | NYLON | YES | C | 105 |
| AI-50195N | 16-14 | FEMALE | .187 X .020 | NYLON | PARTIAL | N/A | 75 |
| AI-50180N | 16-14 | FEMALE | .250 X .032 | NYLON | PARTIAL | N/A | 75 |
| BU-190070021* | 16-14 | FEMALE | .250 X .032 (FLAG) | NYLON | PARTIAL | N/A | 105 |
| BU-190170031 | 16-14 | FEMALE | .187 X .020 | VINYL | PARTIAL | N/A | 75 |
| BU-190170037 | 16-14 | FEMALE | .250 X .032 | VINYL | PARTIAL | N/A | 75 |
| AI-70208 | 16-14 | MALE | .250 X .032 | NYAX HEAT SHRINK | YES | N/A | 125 |
| AI-50208 | 16-14 | MALE | .250 X .032 | NYLON | YES | B | 75 |
| BU-190040005 | 16-14 | MALE | .250 X .032 | NYLON | YES | C | 105 |
| AI-50198N | 16-14 | MALE | .187 X .020 | NYLON | PARTIAL | N/A | 75 |
| AI-50181N* | 16-14 | MALE | .250 X .032 | NYLON | PARTIAL | N/A | 75 |
| BU-190230010 | 16-14 | MALE | .187 X .020 | VINYL | PARTIAL | N/A | 75 |
| BU-190230012 | 16-14 | MALE | .250 X .032 | VINYL | PARTIAL | N/A | 75 |



*UL LISTED --ALL DIMENSIONS ARE IN INCHES --CELL COLOR DEPICTS INSULATION COLOR

Mueller Electric Company
2850 Gilchrist Rd. Bld 5A
Akron, OH 44305

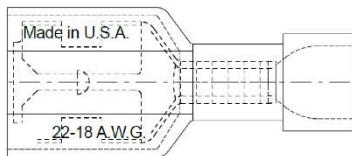
www.muellerelectric.com

Toll Free: 800.955.2629
Phone: 330.780.2525
Fax: 330.780.2524

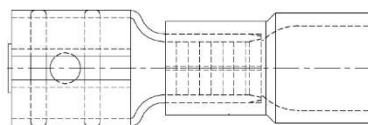
22-18AWG QUICK CONNECTS

| PART NUMBER | AWG SIZE | MALE/FEMALE | TAB SIZE | INSULATION MATERIAL | FULLY INSULATED | STYLE | TEMP RATING (°C) |
|---------------|----------|-------------|--------------------|---------------------|-----------------|-------|------------------|
| AI-70207 | 22-18 | FEMALE | .250 X .032 | NYAX HEAT SHRINK | YES | N/A | 125 |
| BU-190030001* | 22-18 | FEMALE | .250 X .032 | NYLON | YES | A | 105 |
| AI-50207 | 22-18 | FEMALE | .250 X .032 | NYLON | YES | B | 75 |
| BU-19005-0001 | 22-18 | FEMALE | .250 X .032 | NYLON | YES | C | 105 |
| BU-190070001* | 22-18 | FEMALE | .250 X .032 (FLAG) | NYLON | YES | N/A | 105 |
| AI-50192N | 22-18 | FEMALE | .187 X .020 | NYLON | PARTIAL | N/A | 75 |
| AI-50176N | 22-18 | FEMALE | .250 X .032 | NYLON | PARTIAL | N/A | 75 |
| BU-190170007 | 22-18 | FEMALE | .187 X .020 | VINYL | PARTIAL | N/A | 75 |
| BU-190170014 | 22-18 | FEMALE | .250 X .032 | VINYL | PARTIAL | N/A | 75 |
| AI-70206 | 22-18 | MALE | .250 X .032 | NYAX HEAT SHRINK | YES | N/A | 125 |
| AI-50206 | 22-18 | MALE | .250 X .032 | NYLON | YES | B | 75 |
| BU-190040001 | 22-18 | MALE | .250 X .032 | NYLON | YES | C | 105 |
| AI-50197N | 22-18 | MALE | .187 X .020 | NYLON | PARTIAL | N/A | 75 |
| AI-50177N* | 22-18 | MALE | .250 X .032 | NYLON | PARTIAL | N/A | 75 |
| BU-190230003 | 22-18 | MALE | .187 X .020 | VINYL | PARTIAL | N/A | 75 |
| BU-190230005* | 22-18 | MALE | .250 X .032 | VINYL | PARTIAL | N/A | 75 |

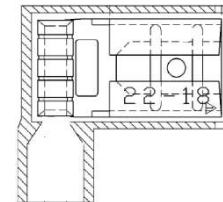
FULLY INSULATED



PARTIALLY INSULATED



FLAG



*UL LISTED --ALL DIMENSIONS ARE IN INCHES --CELL COLOR DEPICTS INSULATION COLOR

Mueller Electric Company
2850 Gilchrist Rd. Bld 5A
Akron, OH 44305

www.muellerelectric.com

Toll Free: 800.955.2629
Phone: 330.780.2525
Fax: 330.780.2524