

I.622 N | Tapered handles

Technopolymer

INCH

RoHS

PA

+122 °F
-4 °F

- 1
- 2
- 3
- 4
- 5
- 6
- 7
- 8
- 9
- 10
- 11
- 12
- 13
- 14
- 15
- 16
- 17
- 18

MATERIAL

High-resilience polyamide based (PA) technopolymer, black colour, glossy finish.

STANDARD EXECUTION

Plain blind hole.

The elastic coupling, by press-fit assembly on h9 tolerance drawn stock bars, is not affected by vibrations and prevents the handle from slipping off (see Technical Data on page A-12).

OTHER EXECUTIONS ON REQUEST

Standard metric holes.

SPECIAL EXECUTIONS ON REQUEST

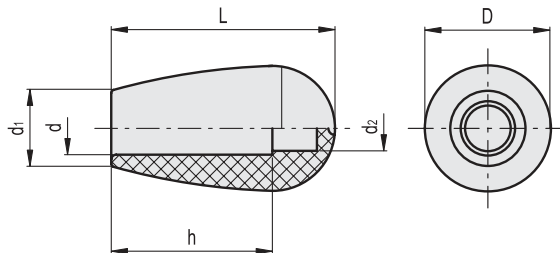
Different RAL colours.

ASSEMBLY INSTRUCTIONS

Fit the handle onto slight chamfered shaft end and push as far as possible by hand or by means of a small press. Alternatively it is possible to tap the handle with a plastic or wooden mallet until firmly in place. In this case we strongly recommend to use a cloth or other suitable soft material over the product to avoid any surface damage.



ELESA Original design



INCH

Code	Description	D	L	d2	d	d1	h	⚖️
920916	I.622/25 N-1/4	0.63	0.98	0.16	0.250	0.47	0.67	0.01
920926	I.622/30 N-5/16	0.79	1.26	0.24	0.312	0.55	0.83	0.02
920936	I.622/40 N-3/8	1.02	1.65	0.3	0.375	0.67	1.18	0.03
920946	I.622/55 N-1/2	1.34	2.15	0.22	0.500	0.83	1.57	0.08