

# Surface Mount Frequency Mixer

## ADE-17H+

### Level 17 (LO Power +17 dBm) 100 to 1700 MHz

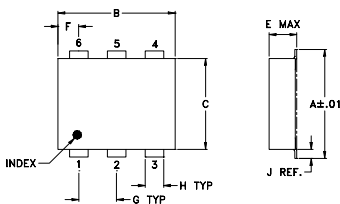
#### Maximum Ratings

Operating Temperature	-40°C to 85°C
Storage Temperature	-55°C to 100°C
RF Power	200mW
IF Current	40mA
Permanent damage may occur if any of these limits are exceeded.	

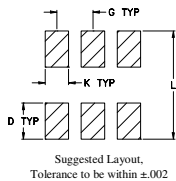
#### Pin Connections

LO	6
RF	3
IF	2
GROUND	1,4,5

#### Outline Drawing



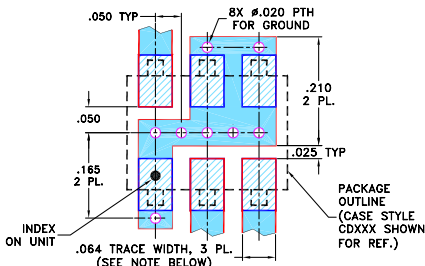
#### PCB Land Pattern



#### Outline Dimensions (inch/mm)

A	B	C	D	E	F	G
.272	.310	.220	.100	.112	.055	.100
6.91	7.87	5.59	2.54	2.84	1.40	2.54
H	J	K	L	wt		
.030	.026	.065	.300	grams		
0.76	0.66	1.65	7.62	0.20		

#### Demo Board MCL P/N: TB-03 Suggested PCB Layout (PL-052)



- NOTES: 1. TRACE WIDTH IS SHOWN FOR ROGERS RO4350B WITH DIELECTRIC THICKNESS .030" ± .002"; COPPER: 1/2 OZ. EACH SIDE. FOR OTHER MATERIALS TRACE WIDTH MAY NEED TO BE MODIFIED.  
2. BOTTOM SIDE OF THE PCB IS CONTINUOUS GROUND PLANE.
- DENOTES PCB COPPER LAYOUT WITH SMOBC (SOLDER MASK OVER BARE COPPER)
  - DENOTES COPPER LAND PATTERN FREE OF SOLDER MASK

#### Notes

- A. Performance and quality attributes and conditions not expressly stated in this specification document are intended to be excluded and do not form a part of this specification document.  
B. Electrical specifications and performance data contained in this specification document are based on Mini-Circuit's applicable established test performance criteria and measurement instructions.  
C. The parts covered by this specification document are subject to Mini-Circuits standard limited warranty and terms and conditions (collectively, "Standard Terms"); Purchasers of this part are entitled to the rights and benefits contained therein. For a full statement of the Standard Terms and the exclusive rights and remedies thereunder, please visit Mini-Circuits' website at [www.minicircuits.com/MCLStore/terms.jsp](http://www.minicircuits.com/MCLStore/terms.jsp)

#### Features

- low conversion loss, 7.2 dB typ.
- excellent IP3, 25 dB typ.
- low profile package
- aqueous washable
- protected by US patent 6,133,525

#### Applications

- VHF/UHF TV



Generic photo used for illustration purposes only  
CASE STYLE: CD542

#### +RoHS Compliant

The +Suffix identifies RoHS Compliance. See our web site for RoHS Compliance methodologies and qualifications



Available Tape and Reel at no extra cost

Reel Size	Devices/Reel
7"	20, 50, 100, 200
13"	500, 1000

#### Electrical Specifications

FREQUENCY (MHz)	CONVERSION LOSS (dB)	LO-RF ISOLATION (dB)		LO-IF ISOLATION (dB)		IP3 at center band (dBm)
		L	U	L	U	
100-1700	7.2	32	36	32	37	25

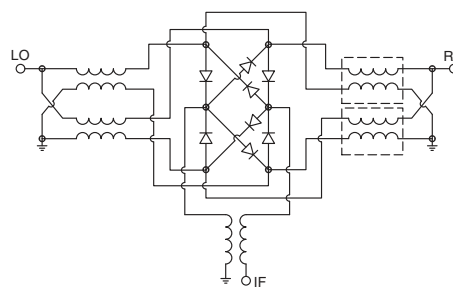
1 dB COMP.: +14 dBm typ.

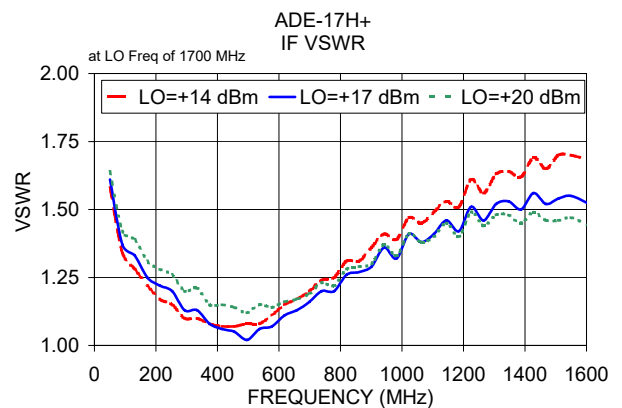
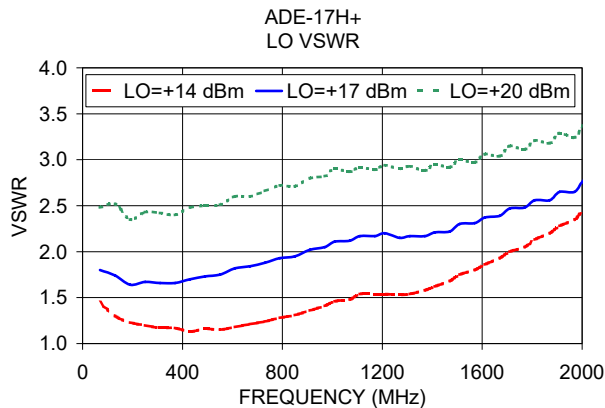
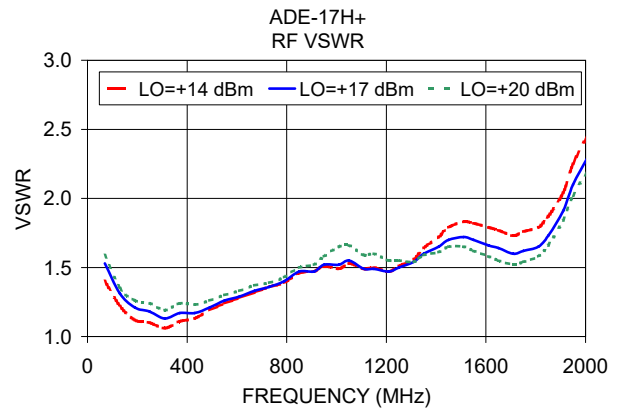
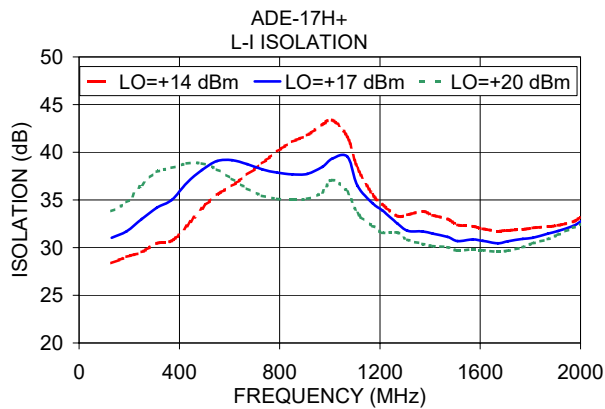
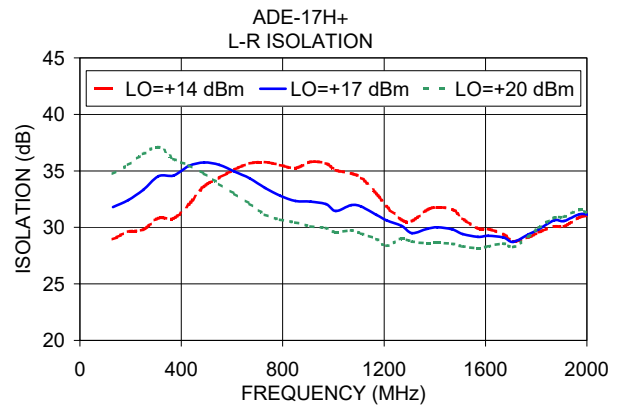
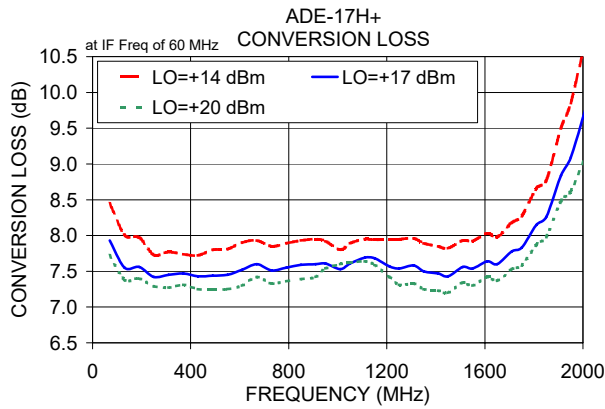
L = 100 - 850 MHz U = upper range [f<sub>l</sub>/2 to f<sub>u</sub>] m = mid band [2f<sub>l</sub> to f<sub>u</sub>/2]

#### Typical Performance Data

Frequency (MHz)	Conversion Loss (dB)	Isolation L-R (dB)	Isolation L-I (dB)	VSWR RF Port (:1)	VSWR LO Port (:1)	
						RF
70.1	130.1	7.93	31.80	31.03	1.53	1.74
130.1	190.1	7.55	32.42	31.72	1.31	1.64
190.1	250.1	7.56	33.32	33.00	1.21	1.67
250.1	310.1	7.42	34.53	34.19	1.18	1.66
370.1	430.1	7.47	35.43	36.79	1.17	1.70
430.1	490.1	7.43	35.75	38.14	1.17	1.73
610.1	670.1	7.52	34.33	38.77	1.29	1.84
730.1	790.1	7.51	32.80	37.87	1.36	1.93
850.1	910.1	7.59	32.28	37.73	1.47	2.02
910.1	970.1	7.60	32.06	38.47	1.47	2.05
1010.1	1070.1	7.53	31.97	39.54	1.52	2.12
1110.1	1170.1	7.69	31.10	34.66	1.49	2.17
1210.1	1270.1	7.57	30.13	32.52	1.47	2.15
1310.1	1370.1	7.58	29.87	31.70	1.54	2.17
1410.1	1470.1	7.47	29.82	31.12	1.65	2.22
1510.1	1570.1	7.56	29.17	30.84	1.72	2.31
1550.1	1610.1	7.54	29.25	30.70	1.70	2.37
1610.1	1670.1	7.64	29.11	30.47	1.66	2.39
1650.1	1710.1	7.60	28.71	30.66	1.64	2.47
1710.1	1770.1	7.78	29.39	30.92	1.60	2.48

#### Electrical Schematic





**Notes**

- A. Performance and quality attributes and conditions not expressly stated in this specification document are intended to be excluded and do not form a part of this specification document.
- B. Electrical specifications and performance data contained in this specification document are based on Mini-Circuit's applicable established test performance criteria and measurement instructions.
- C. The parts covered by this specification document are subject to Mini-Circuit's standard limited warranty and terms and conditions (collectively, "Standard Terms"); Purchasers of this part are entitled to the rights and benefits contained therein. For a full statement of the Standard Terms and the exclusive rights and remedies thereunder, please visit Mini-Circuit's website at [www.minicircuits.com/MCLStore/terms.jsp](http://www.minicircuits.com/MCLStore/terms.jsp)

