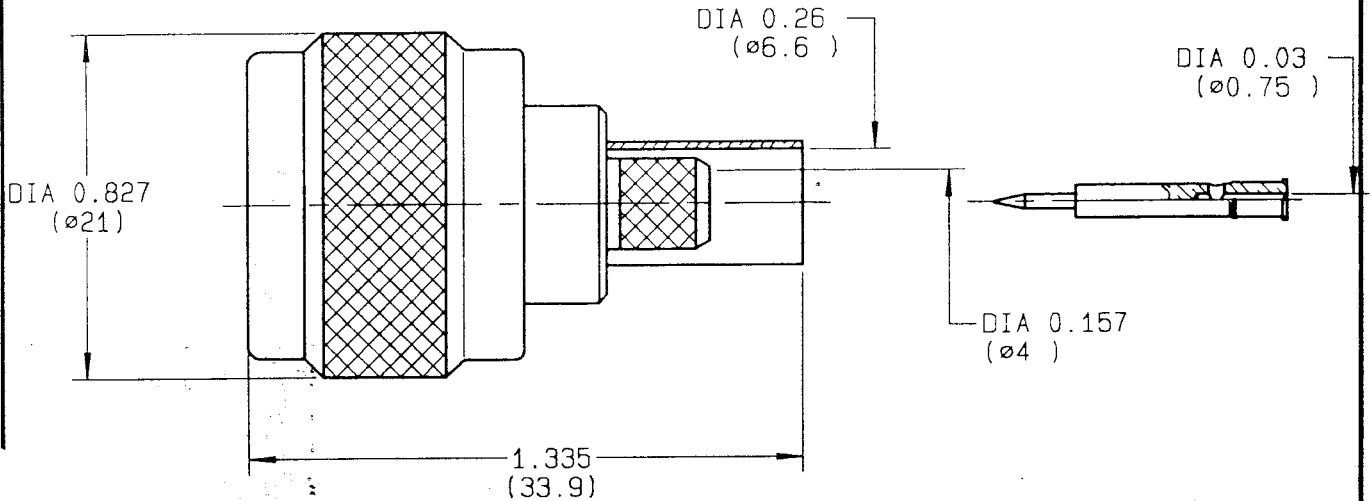


**STRAIGHT PLUG FULL CRIMP-TYPE  
CABLE 6/75 S**

**R162.084.000**  
**SERIES N 75**



NOMINAL IMPEDANCE	75 $\Omega$	CABLES : KX 6A
FREQUENCY RANGE	0-1.5 GHz	RG 59
TEMPERATURE RATING	-55/+155 °C	
V.S.W.R	1.06 + x F(GHz)Maxi	
RF INSERTION LOSS	0.15 $\sqrt{F}$ (GHz) dB Maxi	
VOLTAGE RATING	850 Veff Maxi	
DIELECTRIC WITHSTANDING VOLTAGE	1500 Veff Mini	
INSULATION RESISTANCE	5000 M $\Omega$ Mini	OTHERS CHARACTERISTICS
HERMETIC SEAL	NA Atm.cm <sup>3</sup> /s	CABLE RETENTION
LEAKAGE (pressurized only)	NA	200 N Mini
MECHANICAL DURABILITY	500 Cycles	CENTER CONTACT RETENTION
WEIGHT	26.5 gr	Axial force - mating end
SPECIFICATION		27 N Mini
		Axial force - opposite end
		27 N Mini
		Torque
		NA cm.N Mini
		RECOMMENDED TORQUES
		Mating
		130 cm.N
		Panel nut
		NA cm.N
		Clamp nut
		NA cm.N

CONNECTOR PARTS	MATERIALS	FINISH	(all values are given in micrometers)
BODY	BRASS	BBR 2	
OUTER CONTACT	BRASS	BBR 2	
CENTER CONTACT	BRASS	GOLD 0.5 OVER NICKEL 2	
INSULATOR	PTFE	-	
GASKET	SILICONE RUBBER	-	
OTHERS PIECES	BRASS	BBR 2	

ISSUE	CREATION DATE	FILE PART-NUMBER		<b>RADIALL</b> ®
9813C01	10-OCT-94	EPC 96-07		

GAUT.

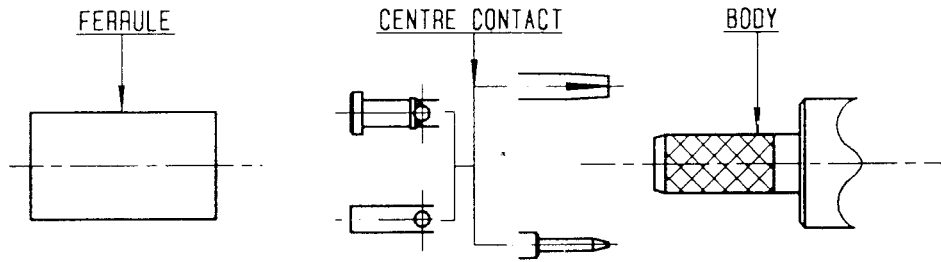
The information given here is subject to change without notice. Design changes may be in order to improve the product.

Connect to the future



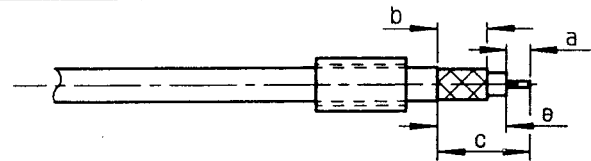
**R162.084.000**

ISSUE 9813C01 SERIES N 75



①

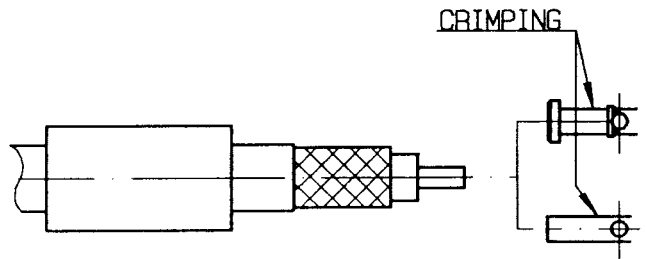
Slide onto the cable the ferrule  
Strip the cable .



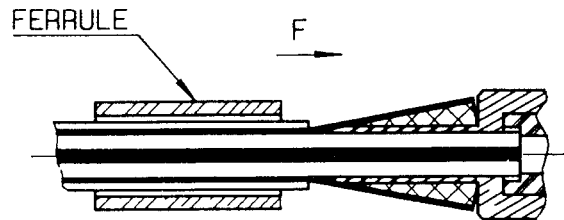
Stripping	a	b	c	d	e
inch	0.177	0.315	0.551	0	0.374
mm	4.5	8	14		9.5

②

Slide on centre contact until it bottoms against cable dielectrique .  
Crimp centre contact .  
Crimping tool : R282 223 000 ( Hex. : 0.068 )  
or R282 293 000 ( M22520/5-01 )  
+ dies R282 235 011 ( M22520/5-11 ) .

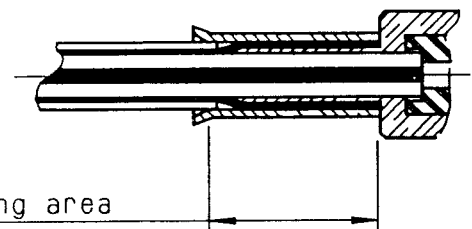


Fan the braid .  
Slide cable into the body until bottoms against insulator .  
Slide ferrule over the braid .  
(In direction F)



④

Crimp the ferrule with crimping tool R 282 223 000 ( Hex. : 0.255 ) or crimping tool R282 293 000 ( M22520/5-01 )  
+ dies R282 235 013 ( M22520/5-13 )  
Cut the excess of braid .



Crimping area