

DIMENSION TABLE

| SL No, | AFCI P/N | SHELL SIZE | A±0.38 | B±0.38 | C±0.13 | D ref | E±0.38 | F ref | G±0.76 | H±0.38 | L±0.80 |
|--------|-----------|------------|--------|--------|--------|-------|--------|-------|--------|--------|--------|
| 1 | 863010ALF | E | 30.68 | 12.7 | 25.0 | 10.31 | 16.79 | 3.18 | 26.19 | 8.74 | 9.53 |
| 2 | 863011ALF | A | 38.89 | 12.7 | 33.30 | 10.31 | 25.00 | 3.18 | 26.19 | 8.74 | 9.53 |
| 3 | 863012ALF | B | 52.78 | 12.7 | 47.04 | 15.06 | 38.48 | 4.75 | 27.08 | 8.74 | 9.53 |
| 4 | 863013ALF | C | 69.04 | 12.7 | 63.50 | 18.25 | 55.14 | 6.35 | 27.08 | 8.74 | 12.7 |
| 5 | 863014ALF | D | 66.68 | 15.47 | 61.12 | 20.62 | 53.16 | 7.93 | 27.08 | 11.13 | 15.88 |

NOTES:

1.MATERIAL

- SHELL - STEEL
- CLAMP - STEEL
- SCREW - SS 303 OR 304
- NYLOCK NUT - SS 303 OR 304

2.FINISH

NICKEL PLATING.

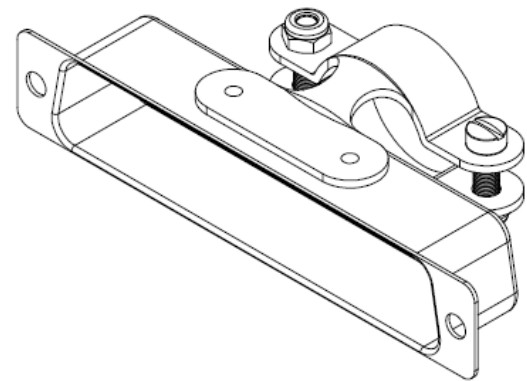
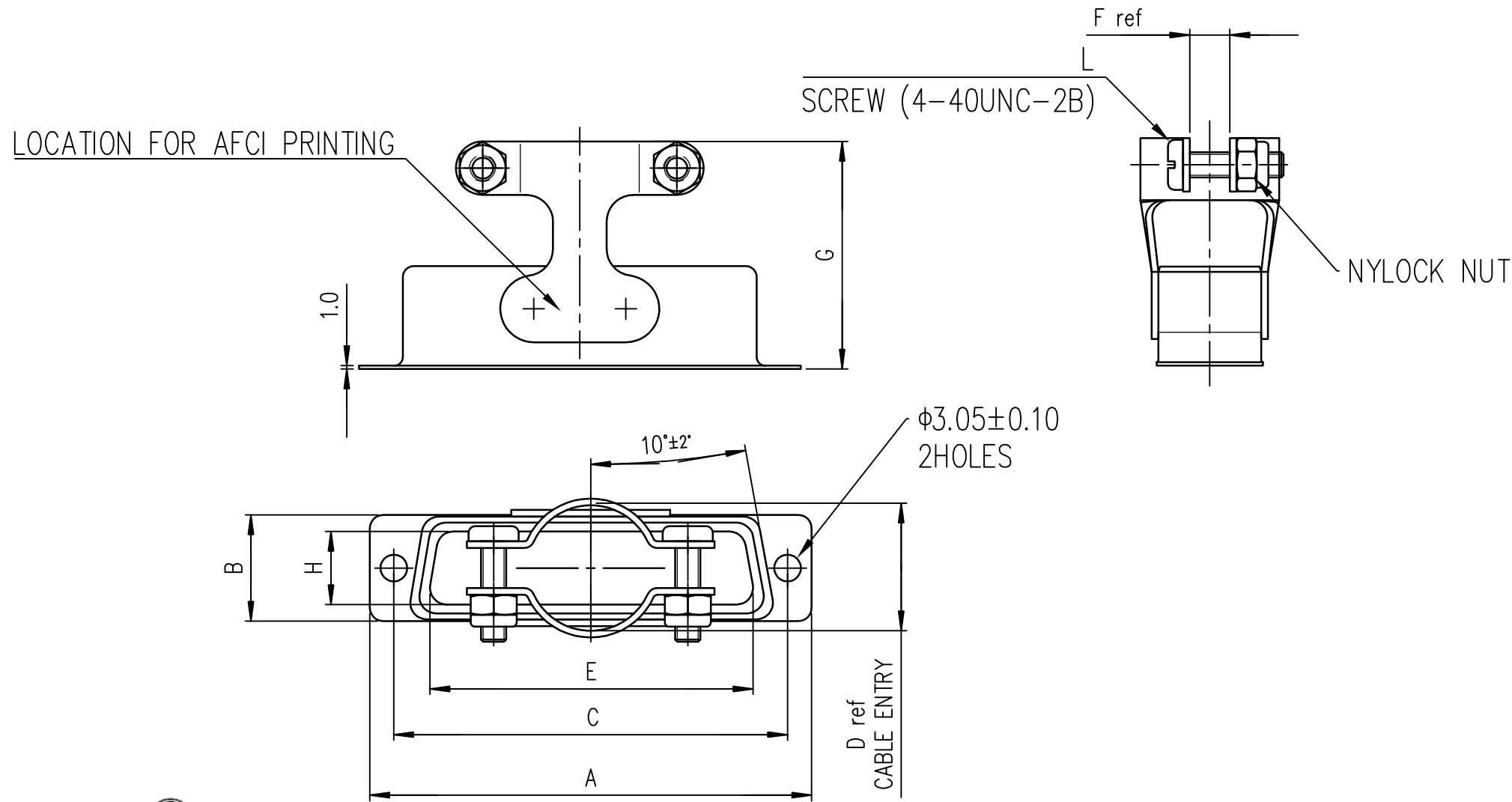
3.PART SUPPLIED IN UNASSEMBLED FORM

4.MARKING FOR PART NUMBERS :

- MARKING ON THE HOOD -AFCI PART NUMBER
- + AFCI, YEAR AND WEEK CODE(eg:-863010ALF AFCI 17 20).

5.PACKING:

- INDIVIDUAL COVER.



| | | | | | | | | | | | | | |
|--------------------------|--|--|--|---------------------------------------|--|-------------------------------|--|----------------------------|--|---|--|-------------------------|--|
| mat'l. code SEE NOTES | | | | surface ISO 1302 ✓ | | tolerance ISO 406 ISO 1101 | | projection mm | | product family D-SUB | | | |
| ltr ecn no dr date | | | | tolerances unless otherwise specified | | angles | | linear | | title METAL HOOD WITH CLAMP STRAIGHT EXIT | | | |
| A - GREGAR 2017-30-08 | | | | | | 0°±2' | | | | scale NTS | | dwg no 10143993 | |
| | | | | dr GREGAR MATHEW 2017-30-08 | | engr MITHUN PAUL 2017-30-08 | | chr MITHUN PAUL 2017-30-08 | | appd BIJU K PAUL 2017-30-08 | | sheet 1 of 1 size A3 | |
| sheet index | | | | revision sheet | | A 1 | | | | type Product - Customer Drawing | | | |