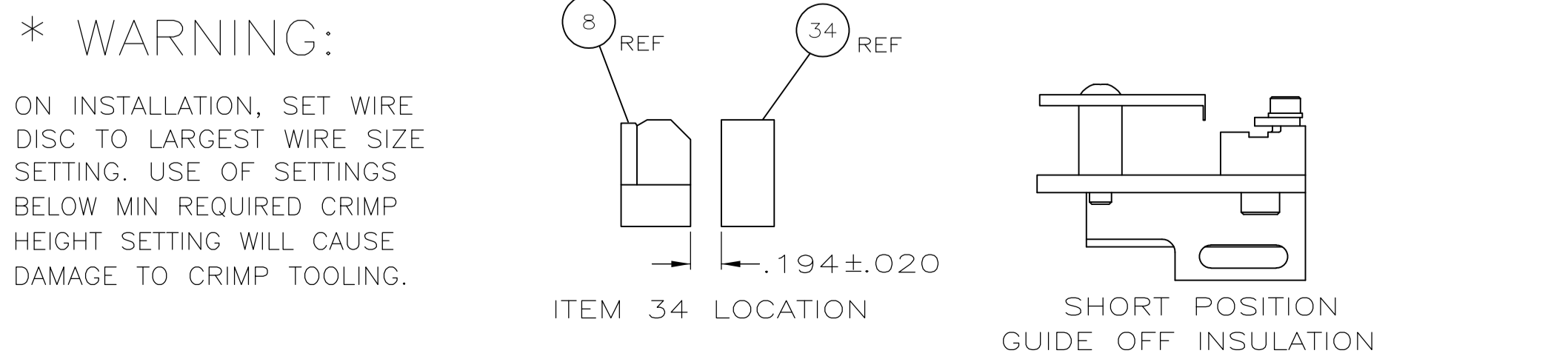
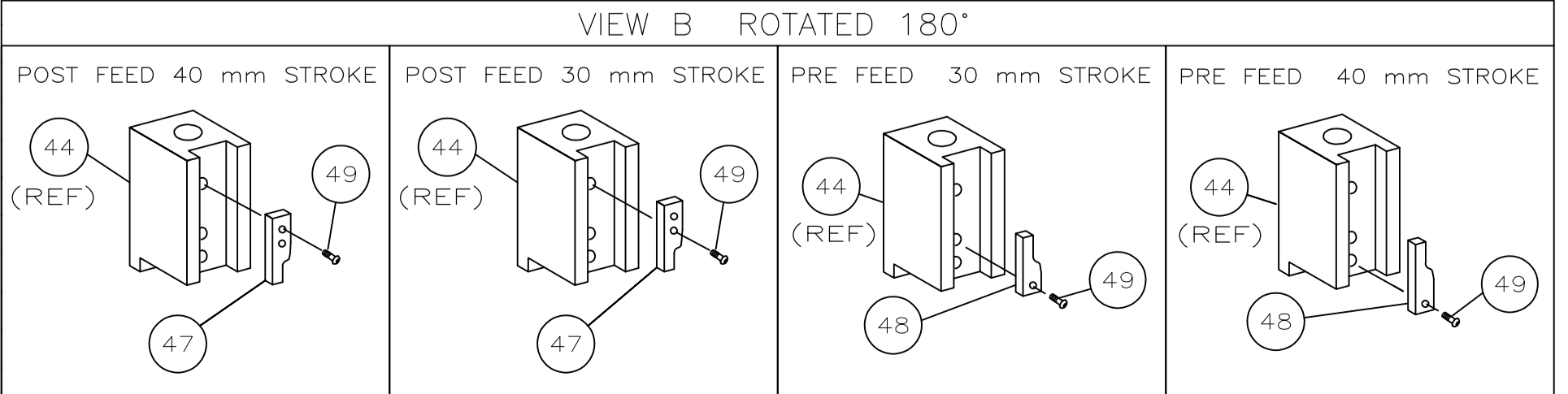
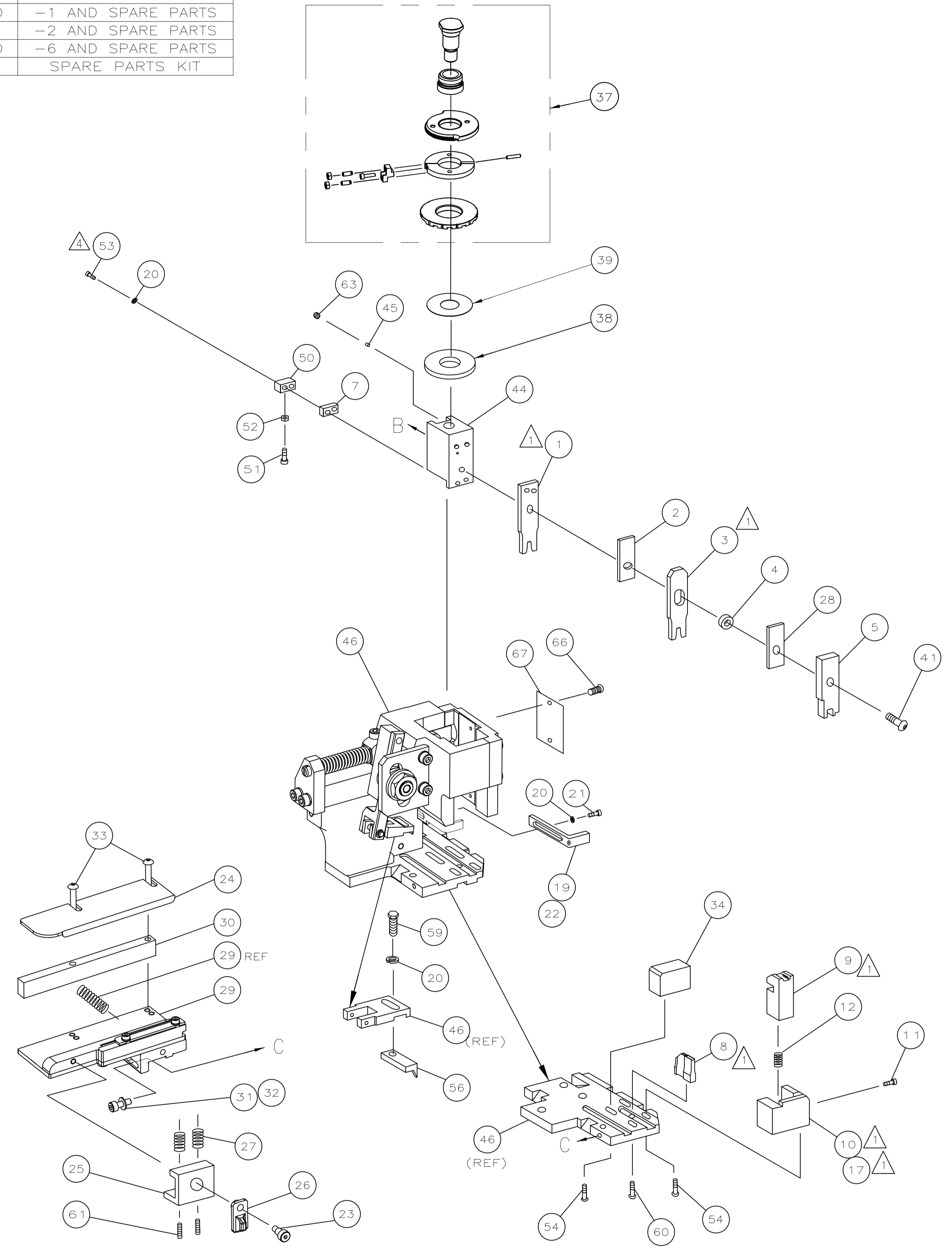


PART NUMBER	REV	FIRST USED	TERMINATOR	FEED TYPE	DESCRIPTION
1528469-1	B	-	LEADMAKER	MECH POST FEED	CUTS CARRIER
1528469-2	B	-	BENCH	MECH PRE FEED	CUTS CARRIER
1528469-6	B	-	LEADMAKER	MECH POST FEED	CONTINUOUS CARRIER
7-1528469-1	B	-	LEADMAKER	MECH POST FEED	-1 AND SPARE PARTS
7-1528469-2	B	-	BENCH	MECH PRE FEED	-2 AND SPARE PARTS
7-1528469-6	B	-	LEADMAKER	MECH POST FEED	-6 AND SPARE PARTS
7-1528469-7	A	-	-	-	SPARE PARTS KIT

CRIMP DATA AMP TERMINAL AMP CRIMP SPECS			
TERMINAL NAME: 2.3 SERIES UNSEALED TAB CONTACT			
CRIMP	SIZE	TYPE	RANGE
WIRE	1.95 [.077 IN]	F	0.3mm ² - 0.5mm ² Δ
INSUL	2.54 [.100 IN]	O/V	1.10-2.20 [.043-.087 IN]
WIRE STRIP LENGTH		APPL INSTRUCTION	
4.50-5.50 [.177-.217 IN]		408-8322 & 408-8490	
TERMINAL APPL SPEC	114-5324	FEED	11.00 [.433 IN]
TERMINALS APPLIED			
1612891-1	-	-	-
-	-	-	-
-	-	-	-
-	-	-	-
-	-	-	-
-	-	-	-
-	-	-	-
-	-	-	-
-	-	-	-
-	-	-	-
WIRE SIZE mm ² AWG	CRIMP HEIGHT *	REF SETTING	
Δ 0.5mm ²	1.07 \pm 0.05 [.042 \pm 0.002 IN]	C 6	
Δ 0.5mm ²	1.05 \pm 0.05 [.041 \pm 0.002 IN]	C 9	
Δ 0.3mm ²	1.00 \pm 0.05 [.039 \pm 0.002 IN]	D 1	

SET UP GAGE	LAYOUT
458637-3	L1528468

- RECOMMENDED SPARE PARTS.
- 2. GREASE RAM, CAM, CAM FOLLOWER AND FEED ROD LIGHTLY.
- 3. LUBRICATE DAILY PER THE APPLICATOR INSTRUCTION SHEET SUPPLIED WITH THE APPLICATOR.
- Δ CUT TO LENGTH AT ASSY.
- Δ SEE APPLICATION SPEC. FOR SPECIFIC WIRE DETAILS.



QTY	REQD	PER	ASSY	PART NO	DESCRIPTION	ITEM NO
1	1	1	1	1	1	73
1	1	1	1	1	1	72
1	1	1	1	1	1	71
						70
						69
						68
1	1	1	1	1	1	67
2	2	2	2	2	2	66
						65
						64
1	1	1	1	1	1	63
						62
2	2	2	2	2	2	61
1	1	1	1	1	1	60
1	1	1	1	1	1	59
						58
						57
1	1	1	1	1	1	56
						55
4	4	4	4	4	4	54
2	2	2	2	2	2	53
1	1	1	1	1	1	52
1	1	1	1	1	1	51
1	1	1	1	1	1	50
1	1	1	1	1	1	49
						48
1	1	1	1	1	1	47
1	1	1	1	1	1	46
1	1	1	1	1	1	45
1	1	1	1	1	1	44
						43
						42
1	1	1	1	1	1	41
						40
1	1	1	1	1	1	39
1	1	1	1	1	1	38
1	1	1	1	1	1	37
						36
						35
1	1	1	1	1	1	34
2	2	2	2	2	2	33
1	1	1	1	1	1	32
1	1	1	1	1	1	31
1	1	1	1	1	1	30
1	1	1	1	1	1	29
1	1	1	1	1	1	28
2	2	2	2	2	2	27
1	1	1	1	1	1	26
1	1	1	1	1	1	25
1	1	1	1	1	1	24
1	1	1	1	1	1	23
1	1	1	1	1	1	22
1	1	1	1	1	1	21
4	4	4	4	4	4	20
						19
1	1	1	1	1	1	18
						17
						16
						15
						14
						13
1	1	1	1	1	1	12
1	1	1	1	1	1	11
1	1	1	1	1	1	10
1	1	1	1	1	1	9
1	2	2	2	1	1	8
1	1	1	1	1	1	7
						6
1	1	1	1	1	1	5
1	1	1	1	1	1	4
1	2	2	2	1	1	3
1	1	1	1	1	1	2
1	2	2	2	1	1	1
-77	-76	-72	-71	-6	-2	-1

THIS DRAWING IS A CONTROLLED DOCUMENT.		DWN L.LOFTHOUSE 27JAN05	Tyco Electronics Corporation Harrisburg, PA 17105-3608	
DIMENSIONS: INCHES		APVD F.BACKHURST 27JAN05	NAME	
TOLERANCES UNLESS OTHERWISE SPECIFIED:		FINE ADJ SIDE FD HD-1 APPL		
0 PLC ± -		APPLICATION SPEC		
1 PLC ± -		SIZE CAGE CODE DRAWING NO		
2 PLC ± -		A1 00779 C=1528469		
3 PLC ± -		RESTRICTED TO		
4 PLC ± -		CUSTOMER DRAWING		
ANGLES ± -		SCALE - SHEET 1 OF 1 REV B		
FINISH -		WEIGHT -		