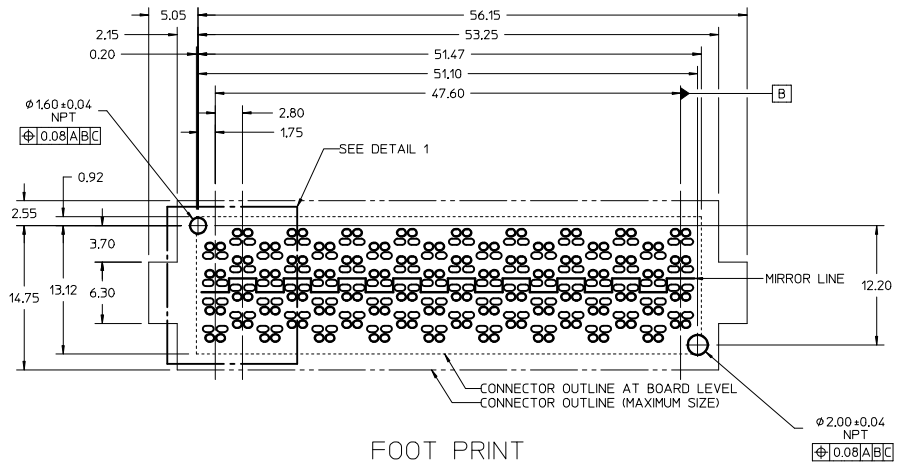
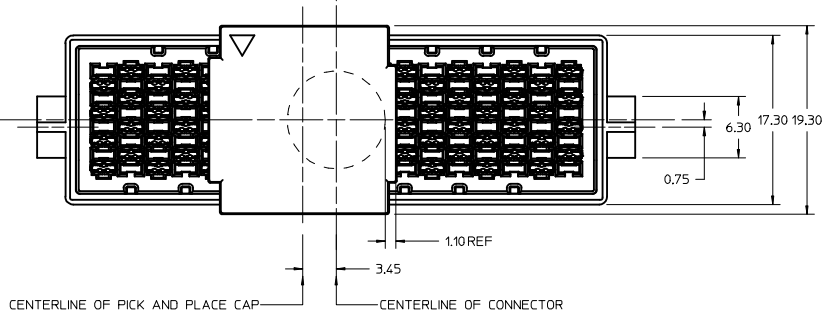
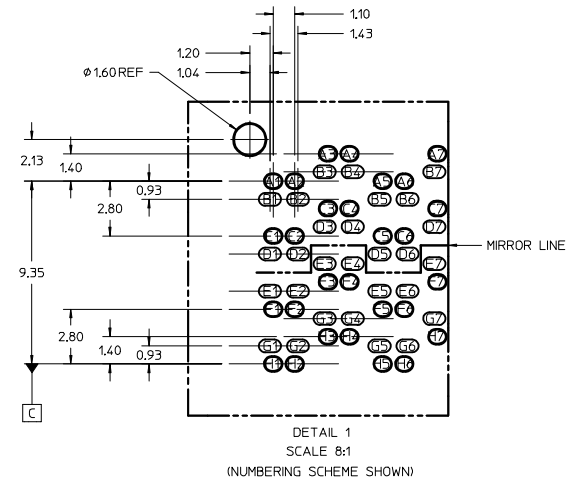
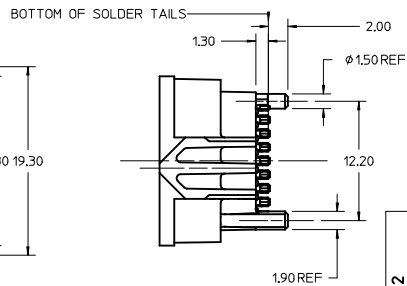
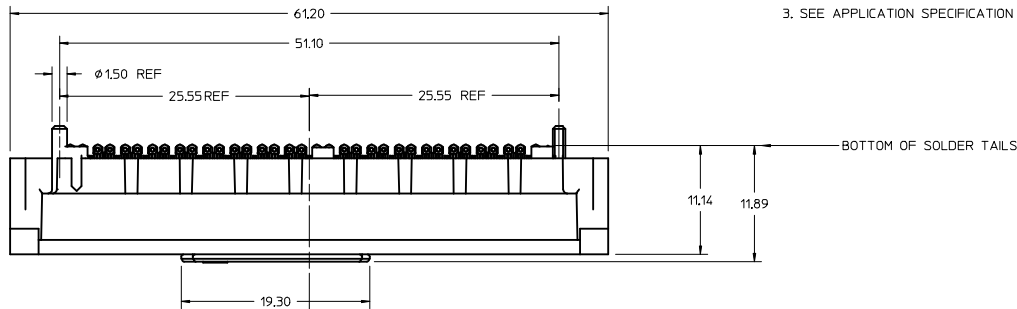


- NOTES:
- HOUSING MATERIAL: LCP, GLASS FILLED, UL 94V-0, BLACK
CONTACT MATERIAL: HIGH PERFORMANCE COPPER ALLOY
SOLDER CHARGE: LEAD FREE SOLDER ALLOY
 - FINISH:
CONTACTS: SELECT GOLD: 30 ΜNCHES MIN ON CONTACT AREA,
AND 100 ΜNCHES MIN TIN ON SOLDERABLE PORTION
OF SOLDER TAILS, OVER 50 ΜNCHES MIN NICKEL OVERALL.
 - PRODUCT SPECIFICATION: PS-170807-0001
 - PACKAGING SPECIFICATION: PK-170814-002
 - APPLICATION SPECIFICATION: AS-170807-0001
 - MATES TO THE 1708070030 PLUG.



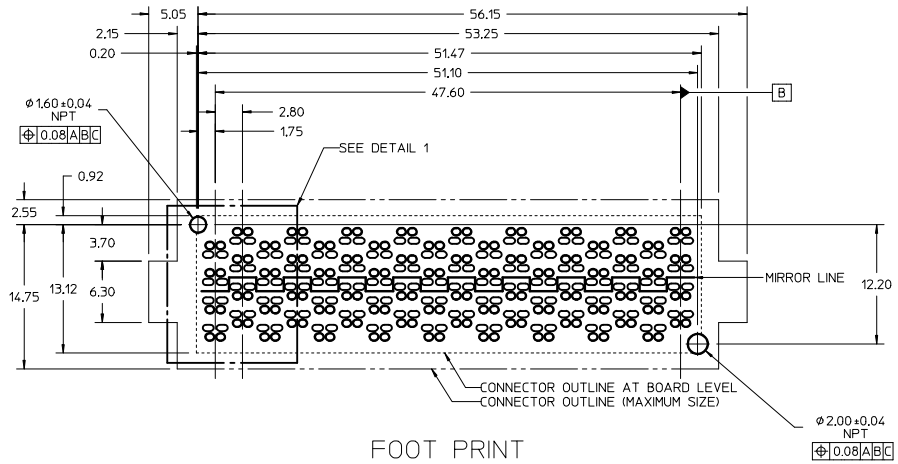
FOOT PRINT

- FOOT PRINT NOTES:
- DATUM -A- IS THE TOP OF THE PCB.
 - ALL DIMENSIONS ARE BASICS.
 - SEE APPLICATION SPECIFICATION FOR ADDITIONAL INFORMATION.



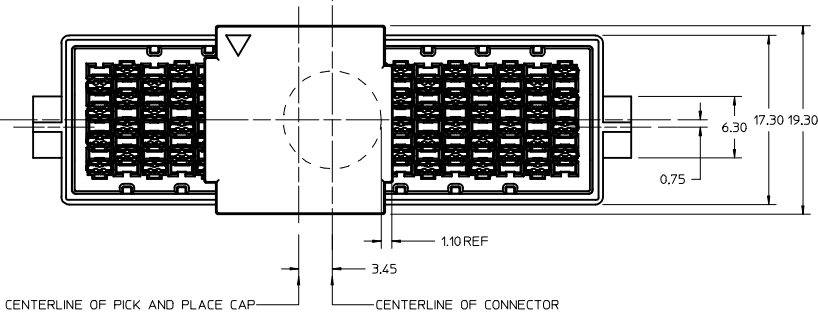
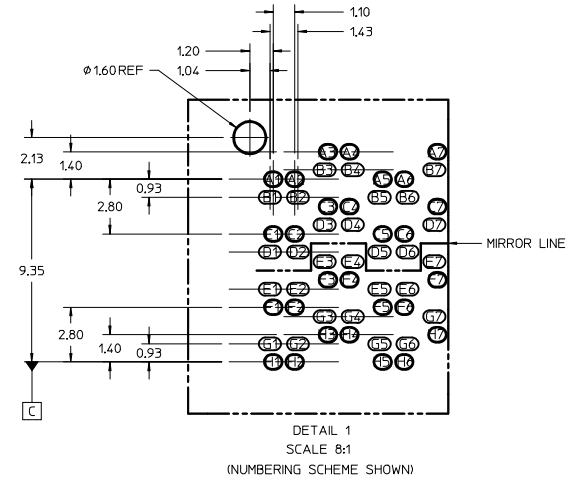
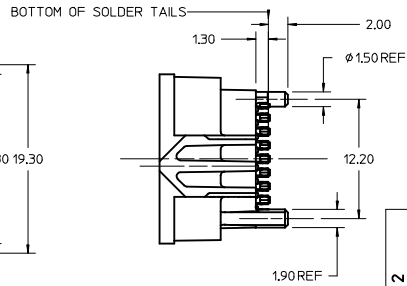
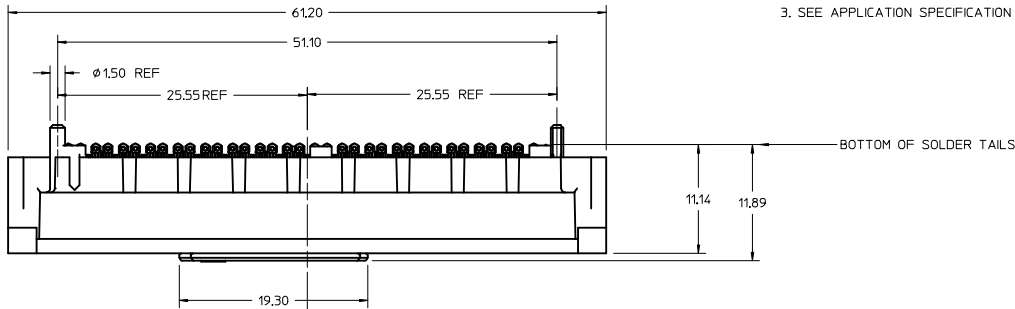
SEE SHEET 2 A1	LEC NO: UCP2018-0109	DRWNSKANG 2017/07/25	CHKD: JESSIECHUA 2017/07/25	APPR: SHONG 2017/08/02	QUALITY SYMBOLS	GENERAL TOLERANCES (UNLESS SPECIFIED)	DIMENSION STYLE	SCALE	DESIGN UNITS	THIRD ANGLE PROJECTION
					$\nabla=0$	mm INCH	MM ONLY	4:1	METRIC	
					$\nabla=0$	4 PLACES ± --- ± ---	DRAWN BY DATE			TITLE
					$\nabla=0$	3 PLACES ± --- ± ---	JESSIECHUA 2014/06/27			RECEPTACLE WITH POWER 4X18, 8MM, 100 OHMS NEOSCALE, BLIND MATE
					$\nabla=0$	2 PLACES ± 0.15 ± ---	CHECKED BY DATE			
						1 PLACE ± --- ± ---	HCGOH 2014/06/27			
						0 PLACE ± --- ± ---	APPROVED BY DATE			
						ANGULAR ±1/2°	SHONG 2014/09/03			
						DRAFT WHERE APPLICABLE MUST REMAIN WITHIN DIMENSIONS	MATERIAL NO.	DOCUMENT NO.		SHEET NO.
							1708140030	SD-170814-0030		1 OF 2
							THIS DRAWING CONTAINS INFORMATION THAT IS PROPRIETARY TO MOLEX INCORPORATED AND SHOULD NOT BE USED WITHOUT WRITTEN PERMISSION			NR-170814-0030

- NOTES:
- HOUSING MATERIAL: LCP, GLASS FILLED, UL 94V-0, BLACK
CONTACT MATERIAL: HIGH PERFORMANCE COPPER ALLOY
SOLDER CHARGE: LEAD FREE SOLDER ALLOY
 - FINISH:
CONTACTS: SELECT GOLD: 30 ΜNCHES MIN ON CONTACT AREA,
AND 100 ΜNCHES MIN TIN ON SOLDERABLE PORTION
OF SOLDER TAILS, OVER 50 ΜNCHES MIN NICKEL OVERALL.
 - PRODUCT SPECIFICATION: PS-170807-0001
 - PACKAGING SPECIFICATION: PK-170814-002
 - APPLICATION SPECIFICATION: AS-170807-0001
 - MATES TO THE 1708070030 PLUG.



FOOT PRINT

- FOOT PRINT NOTES:
- DATUM -A- IS THE TOP OF THE PCB.
 - ALL DIMENSIONS ARE BASICS.
 - SEE APPLICATION SPECIFICATION FOR ADDITIONAL INFORMATION.



<p>SEE SHEET 2 LEC NO: UCP2018-0109 DRAWNSKANG 2017/07/25 CHKD: JESSIECHUA 2017/07/25 APPRO: SHONG 2017/08/02</p>	QUALITY SYMBOLS	GENERAL TOLERANCES (UNLESS SPECIFIED)	DIMENSION STYLE	SCALE	DESIGN UNITS	THIRD ANGLE PROJECTION
	▽=0	mm INCH	MM ONLY	4:1	METRIC	
	▽=0	4 PLACES ± --- ± ---	DRAWN BY DATE	TITLE		
	▽=0	3 PLACES ± --- ± ---	JESSIECHUA 2014/06/27	RECEPTACLE WITH POWER 4X18, 8MM, 100 OHMS NEOSCALE, BLIND MATE		
	2 PLACES ± 0.15 ± ---	HCGOH 2014/06/27	molex			
	1 PLACE ± --- ± ---	APPROVED BY DATE	MATERIAL NO.	DOCUMENT NO.	SHEET NO.	
	0 PLACE ± --- ± ---	SHONG 2014/09/03	1708140030	SD-170814-0030	1 OF 2	
		ANGULAR ±1/2°	THIS DRAWING CONTAINS INFORMATION THAT IS PROPRIETARY TO MOLEX INCORPORATED AND SHOULD NOT BE USED WITHOUT WRITTEN PERMISSION			
		DRAFT WHERE APPLICABLE MUST REMAIN WITHIN DIMENSIONS	NPR-170814-0030			

