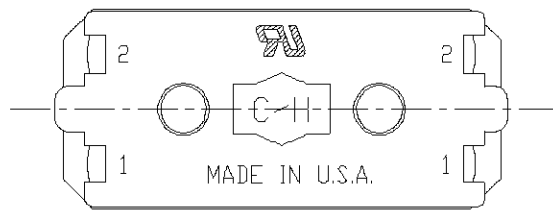
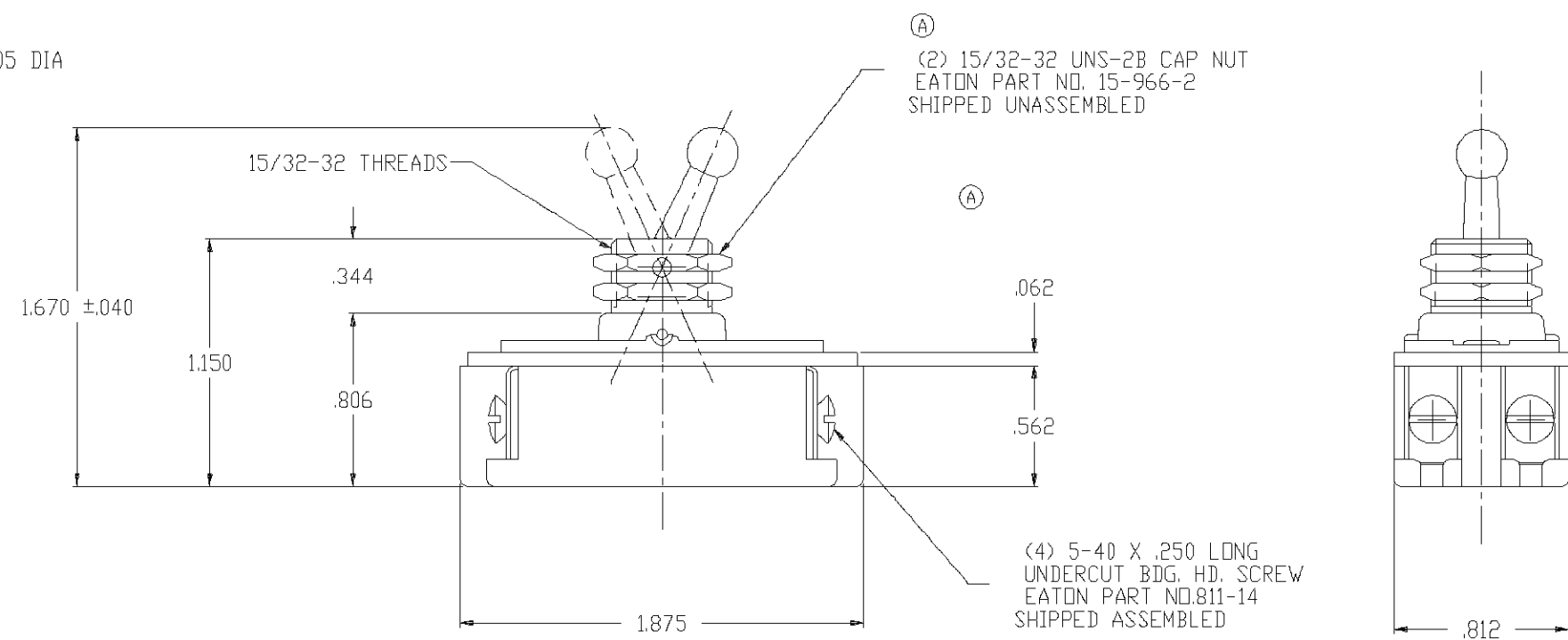
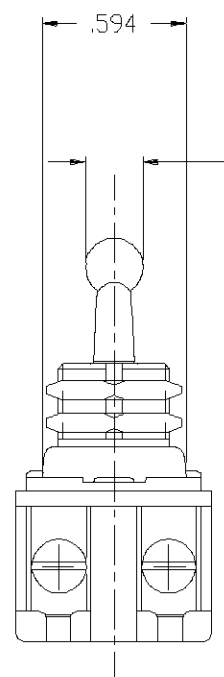


.068 <sup>+0.003</sup>/<sub>-0.004</sub> X .038 DEEP KEYWAY

NOTE:  
1. UNLESS OTHERWISE SPECIFIED ALL TOLERANCES TO BE ±.016.



ORDER NO. 93719950

A	REMOVED 15-192 NUT NOTE, ADDED *(2)* TO 15-966-2 NUT NOTE.	6/29/94	D
B			E
C			F

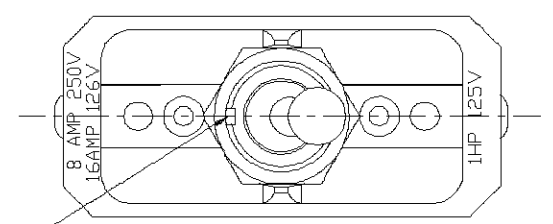
THIRD ANGLE PROJECTION



TITLE: DOUBLE POLE 8A 250V/16A 125V ONE HOLE MTD. TOOL HANDLE TOGGLE SWITCH			
DR.	W. LEONARD	1/16/92	SURFACE COATING FIRST ASSEM. WHERE LISTED 7320K12
CHK.	WESTEMEIER	1/22/92	SCALE SUP'S
APP.	M.R. DUMMER	1/22/92	DO NOT SCALE DRAWING SUP'D BY

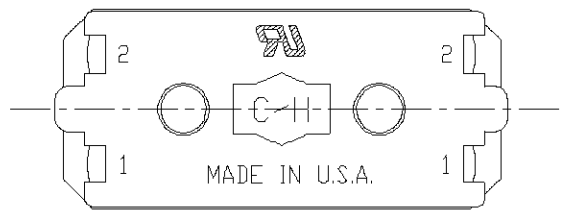
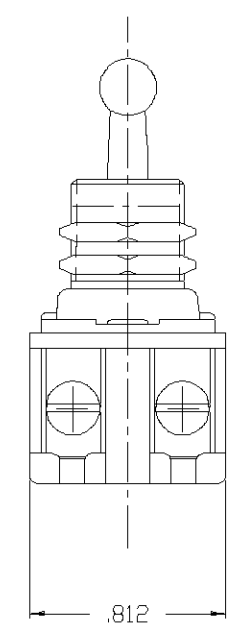
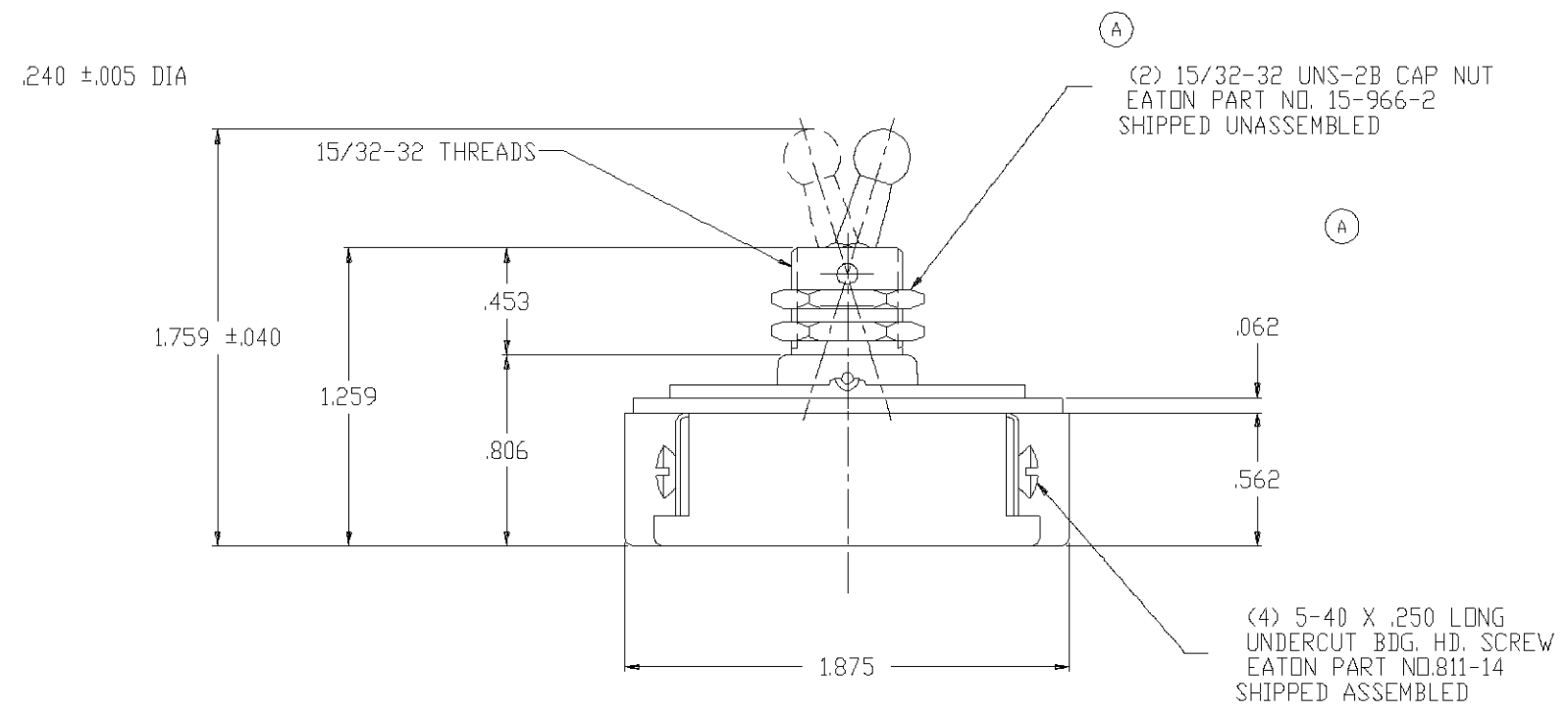
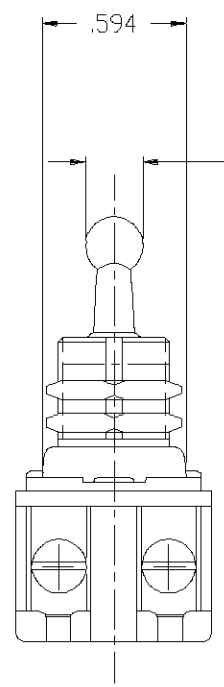
B

91-284



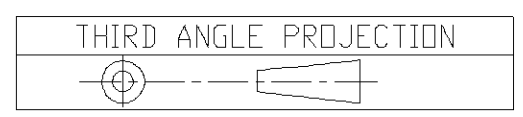
.068  $\begin{matrix} +.003 \\ -.004 \end{matrix}$  X .038 DEEP KEYWAY

NOTE:  
1. UNLESS OTHERWISE SPECIFIED ALL TOLERANCES TO BE  $\pm 0.016$ .



ORDER NO. 93719950

A	REMOVED 15-192 NUT NOTE, ADDED *(2)* TO 15-966-2 NUT NOTE.	6/29/94	D
B			E
C			F



TITLE: DOUBLE POLE 8A 250V/16A 125V ONE HOLE MTD. TOOL HANDLE TOGGLE SWITCH			
DR. W. LEONARD	1/16/92	SURFACE COATING	FIRST ASSEM. WHERE LISTED 7320K13
CHK. WESTEMEIER	1/22/92	SCALE	SUP'S
APP. M.R. DUMMER	1/22/92	DO NOT SCALE DRAWING	SUP'D BY