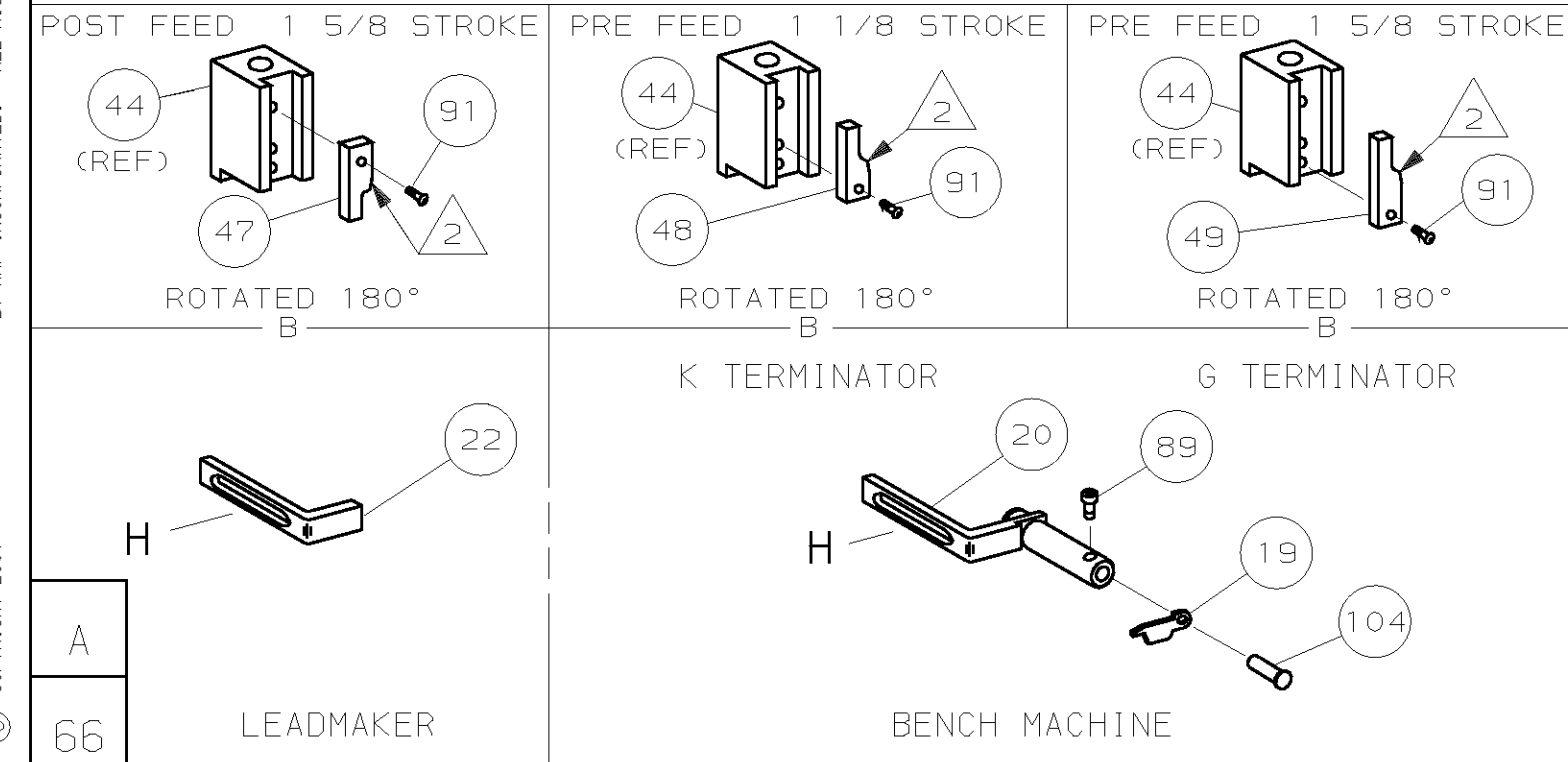
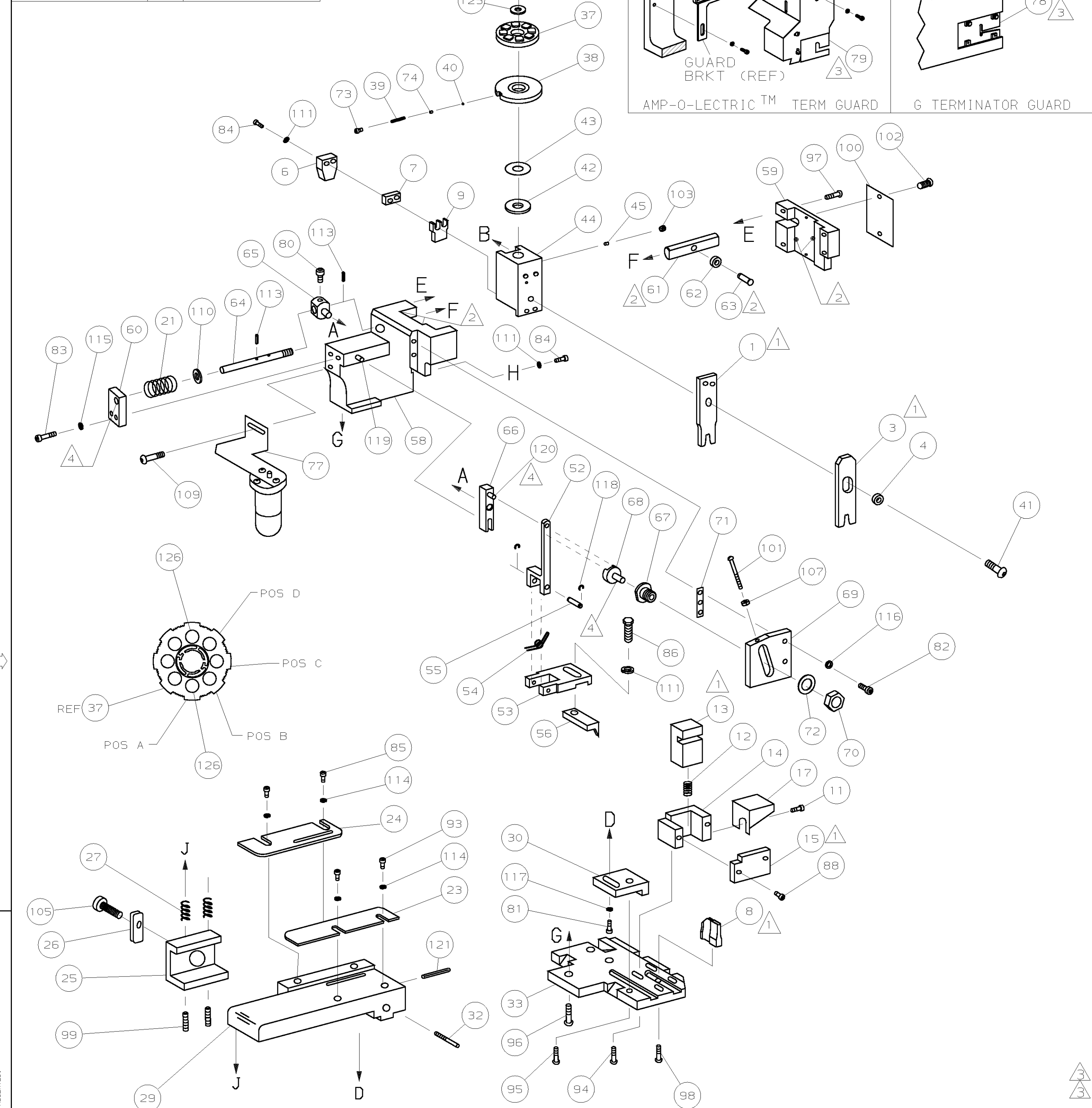


PART NUMBER	REV	FIRST USED
680486-1	B	122500-1
680486-2	B	565435-5
680486-3	B	354500-1



- 1 RECOMMENDED SPARE PARTS.
- 2 GREASE LIGHTLY.
- 3 GUARD MUST BE IN PLACE WHEN OPERATING APPLICATOR IN A BENCH MACHINE.
- 4 LUBRICATE DAILY USING NO. 20 MACHINE OIL.
- 5. ITEMS WITH QTY OF REF SPECIFIED (EXCEPT ITEMS 78 AND 79) ARE USED ON ITEM 46.

TERMINAL NAME: CONTACT, SELF PIERCING			
286599		CRIMPING DATA	
PAD LTR	CRIMP HEIGHT	WIRE SIZE	
A	.028 ±.002 [0.71 ±0.05mm]	28	
B	NOT	USED	
C	NOT	USED	
D	NOT	USED	
CRIMP	SIZE	TYPE	RANGE
WIRE	.055 [1.40mm]	F	28
INSUL	.070 [1.78mm]	F	.050-.062

QTY	REF	REF	REF	U/M	DWG SIZE	PART NO	DESCRIPTION	ITEM NO
1	1	1	1	-	A	22353-8	SCR,SHLD (.187x.25)D6 LEVER	105
1	1	1	1	-	A	21009-2	SCR,SKT 5ET(1/4-20x.25 LW)RAM	103
2	2	2	2	-	A	21017-2	SCR,DRIVE (#2x.19) ID PLATE	102
REF	REF	REF	REF	-	A	6-23715-5	SCR,PAN HD(6-32x1.50)FEED ADJ	101
1	1	1	1	-	B	461264-1	PLATE, IDENTIFICATION	100
2	2	2	2	-	A	5-21006-6	SCR,SET (10-32x.75)DRAG	99
1	1	1	1	-	A	22733-8	SCR,BHC (8-32x.38 LW)ANVIL	98
REF	REF	REF	REF	-	A	2-21002-9	SCR,BHC (10-32x.75)CAP	97
REF	REF	REF	REF	-	A	2-22733-8	SCR,BHC (1/4-20x.62)HOUSING	96
REF	REF	REF	REF	-	A	2-21002-7	SCR,BHC (10-32x.50)56 ADJ BLOCK	95
4	4	4	4	-	A	2-21002-2	SCR,BHC (8-32x.50)TERM H DWN	94
2	2	2	2	-	A	1-21000-4	SCR,BHC (8-32x.38)F ST GUIDE	93
1	1	1	1	-	A	1-21002-7	SCR,BHC (6-32x.38)CAM	91
1	1	1	1	-	A	2-22603-0	SCR,HEX HD(8-32x.31)FEED FINGER	86
2	2	2	2	-	A	1-21000-3	SCR,SHC (4-40x.25)R ST GUIDE	85
3	3	3	3	-	A	2-21000-9	SCR,SHC (8-32x.50)STRIPPER	84
REF	REF	REF	REF	-	A	3-21000-7	SCR,SHC (10-32x.75)FEED ROD GD	83
REF	REF	REF	REF	-	A	3-21000-6	SCR,SHC (10-32x.62)FD ADJ BLK	82
1	1	1	1	-	A	3-21000-4	SCR,SHC (10-32x.38)56 ADJ BL	81
REF	REF	REF	REF	-	A	3-21000-4	SCR,SHC (10-32x.38)PIVOT BLK	80
-	REF	-	-	-	B	455749-1	GUARD, WINDOW	79
REF	-	-	-	-	B	679532-1	INSERT, GUARD	78
-	1	-	-	-	C	1-465184-0	LUBRICATOR ASSY	77
1	1	1	1	-	A	690603-1	SPRING, ASSIST	74
1	1	1	1	-	A	23030-1	SCR,SHC (6-32x.25 SL)INS DISC	73
REF	REF	REF	REF	-	A	458109-1	WASHER, SPECIAL	72
REF	REF	REF	REF	-	A	690517-1	SPACER	71
-3	-2	-1	U/M	DWG SIZE		PART NO	DESCRIPTION	ITEM NO

QTY	REF	REF	REF	U/M	DWG SIZE	PART NO	DESCRIPTION	ITEM NO
1	1	1	1	-	B	694433-2	PAWL, FEED	56
REF	REF	REF	REF	-	B	240624-1	PIN, FEED FINGER	55
REF	REF	REF	REF	-	B	691499-1	SPRING, FEED FINGER	54
REF	REF	REF	REF	-	B	690541-1	HOLDER, FEED FINGER	53
REF	REF	REF	REF	-	A	455679-1	LEVER, TERMINAL FEED ARM	52
1	1	1	1	-	B	690602-6	CAM, PRE-FEED 1 5/8 ST	49
-	1	-	-	-	B	690602-5	CAM, PRE-FEED 1 1/8 ST	48
-	-	1	-	-	B	690501-4	CAM, POST-FEED 1 5/8 ST	47
1	1	1	1	-	B	459456-1	APPLICATOR, BASIC (SUBASSY)	46
1	1	1	1	-	A	690191-1	PLUG, NYLON	45
1	1	1	1	-	C	455673-1	RAM	44
1	1	1	1	-	A	690125-1	WASHER, LAMINATED	43
1	1	1	1	-	A	1-690124-3	WASHER, RAM	42
1	1	1	1	-	A	7-21002-9	BOLT, CRIMPER (5/16x1.00)	41
1	1	1	1	-	A	23241-6	BALL, STEEL	40
1	1	1	1	-	A	690170-1	SPRING, COMPRESSION	39
1	1	1	1	-	C	690142-1	DISC, INSULATION	38
1	1	1	1	-	D	354777-1	WIRE DISC, PLASTIC	37
1	1	1	1	-	A	22480-5	WASHER, SPRING	36
1	1	1	1	-	B	690212-1	POST, RAM	35
1	1	1	1	-	B	690212-1	POST, RAM	34
REF	REF	REF	REF	-	D	455675-1	PLATE, BASE	33
1	1	1	1	-	D	690432-3	SCREW, ADJUSTMENT	32
REF	REF	REF	REF	-	B	455675-1	BLOCK, STRIP GUIDE ADJ	30
1	1	1	1	-	C	1-844048-4	PLATE, STRIP GUIDE	29
2	2	2	2	-	A	1-22284-0	SPRING, DRAG	27
1	1	1	1	-	B	240793-1	LEVER, DRAG RELEASE	26
1	1	1	1	-	B	240792-1	DRAG, TERMINAL	25
1	1	1	1	-	D	690438-1	GUIDE, STRIP (REAR)	24
1	1	1	1	-	D	189124-2	GUIDE, STRIP (FRONT)	23
1	1	1	1	-	B	690472-2	STRIPPER	22
REF	REF	REF	REF	-	A	4-22284-9	SPRING, FEED RETURN	21
1	1	1	1	-	A	691668-1	GUARD, CHIP (REAR)	17
1	1	1	1	-	B	1-690464-2	PLATE, SHEAR (REAR)	15
1	1	1	1	-	B	690462-3	HOLDER, SHEAR (REAR)	14
1	1	1	1	-	C	690463-1	SHEAR, FLOAT (REAR)	13
1	1	1	1	-	A	5-22280-0	SPRING, SHEAR	12
1	1	1	1	-	B	690461-1	STOP, SHEAR	11
1	1	1	1	-	C	189369-3	HOLDDOWN, TERMINAL	9
1	1	1	1	-	C	904717-6	ANVIL	8
1	1	1	1	-	C	1-240641-4	SPACER, DEPRESSOR (REAR)	7
1	1	1	1	-	A	1-690468-1	DEPRESSOR, SHEAR (REAR)	6
1	1	1	1	-	B	238011-6	SPACER, BLOCK CRIMPER	4
1	1	1	1	-	C	4-683453-8	CRIMPER, INSULATION	3
1	1	1	1	-	C	3-456402-9	CRIMPER, WIRE	1

DIMENSIONS IN INCHES. DO NOT SCALE PRINT. TOLERANCES UNLESS OTHERWISE SPECIFIED:		MATERIAL		FINISH	
DR	02JUL97	APP	02JUL97	T.ELBIN	
B.HIGMAN		REL			
CHK	02JUL97	C.ERISMAN			
3	PLC DEC ±				
4	PLC DEC ±				
ANGLES ±		SURF TEXTURE: ✓		REMOVE BURRS, BREAK SHARP EDGES R.015 MAX	
SCALE		DWG NO		680486	
NAME		SIDE FEED HDM APPLICATOR		MACHINE REF MINI APPL	
SHEET		REV		1 OF 1 B	

THIS DRAWING IS A CONTROLLED DOCUMENT.

11/07/2001
 RELEASED FOR PUBLICATION
 BY AMP INCORPORATED. ALL RIGHTS RESERVED.
 THIS DRAWING IS UNRELEASABLE
 COPYRIGHT 2001
 AMP 1756 REV 3-92