

20 19 18 17 16 15 14 13 12 11 9 8 7 6 5 4 3 2 1

VIEW ON MATING SIDE

○	Z	Z	A	A	A	A	A	A	A	A	A	A	A	A	A	A	A	A	A	Z	A	A	A	A	A	A	A	A	A	A	A	A	A	A	A
○	Z	A	A	A	A	A	A	A	A	A	A	A	A	A	A	A	A	A	A	A	A	A	A	A	A	A	A	A	A	A	A	A	A	A	A
○	Z	Z	A	A	A	A	A	A	A	A	A	A	A	A	A	A	A	A	A	Z	A	A	A	A	A	A	A	A	A	A	A	A	A	A	A
	-	2	3	4	5	6	7	8	9	10	11	12	13	14	15	16	17	18	19	20	21	22	23	24	25	26	27	28	29	30	31	32			

A = 89 STANDARD CONTACTS L = 2,9  
 Z = 7 FMLB CONTACTS +0,6 L = 2,9  
 S = 96 TOTAL NUMBER OF CONTACTS

MARKING	STANDARD
PERFORMANCE LEVEL	G1/O = CONTACT AREA PERFORM. LEVEL I / TERMINATION TIN
FLUX PROOF	NO
FIXING CLIP	NO
DIMENSIONS	SD-85013-0001 SHT 1

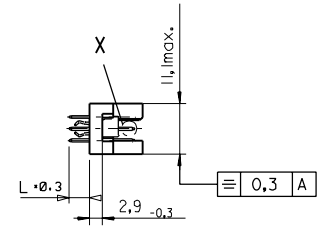
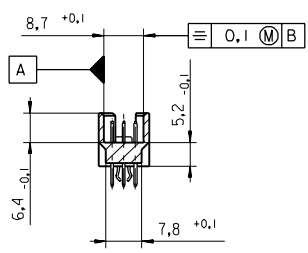
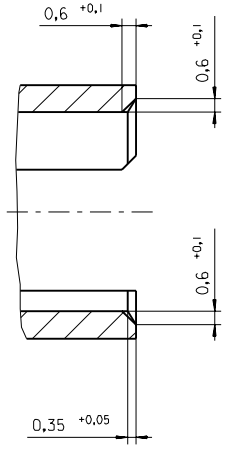
Z	G1/O	a1,2,24	b1	c1,2,24
A	G1/O	a3-23,25-32	b2-32	c3-23,25-32
CONTACT SYMBOL	PERFORMANCE LEVEL	CONTACT POSITION NUMBER		

EC NO. I 2004-XXXX DRAWN N.S. 31/03/04 CHK'd G.L. 31/03/04 APPR. G.L. 31/03/04	QUALITY SYMBOLS MAJOR $\nabla$ CRITICAL $\nabla$	GENERAL TOLERANCES: (UNLESS SPECIFIED) 4 PLACES $\pm 0,1$ mm $\pm$ INCH 3 PLACES $\pm 0,2$ mm $\pm$ INCH 2 PLACES $\pm 0,3$ mm $\pm$ INCH 1 PLACE $\pm 0,4$ mm $\pm$ INCH	SCALE DESIGN UNITS <input checked="" type="checkbox"/> MM <input type="checkbox"/> INCH	DRAWN BY & DATE N.S. 17/09/01	THIRD ANGLE PROJECTION <input type="checkbox"/> 1st ANGLE <input checked="" type="checkbox"/> 3rd ANGLE	DIMENSIONS: <input type="checkbox"/> MM <input type="checkbox"/> INCH <input checked="" type="checkbox"/> MM ONLY	SHT 1 REV 1 REVISE ON CAD ONLY	
	DESCRIPTION B	DRAWN BY & DATE N.S. 17/09/01	CHECKED BY & DATE G.L. 17/09/01	APPROVED BY & DATE G.L. 17/09/01	TITLE: 96 POS MALE CONNECTOR ACCORDING DIN 41612 STYLE R CONTACTS ARRANGEMENT	MATERIAL NO. 85013-3081	DRAWING NO. SD-85013-3081	SHEET NO. 1 OF 1
	CAD FILENAME SD-85013-3081.S01	DRAFT WHERE APPLICABLE MUST REMAIN WITHIN DIMENSIONS		THIS DRAWING CONTAINS INFORMATION THAT IS PROPRIETARY TO MOLEX INCORPORATED AND SHOULD NOT BE USED WITHOUT WRITTEN PERMISSION.		MOLEX	MOLEX INCORPORATED	SIZE D
	THIS DRAWING CONTAINS INFORMATION THAT IS PROPRIETARY TO MOLEX INCORPORATED AND SHOULD NOT BE USED WITHOUT WRITTEN PERMISSION.							

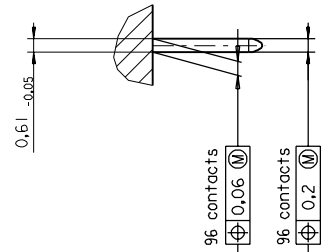
24-border.DGN REV 4 96/06/12 LEVEL 6 19 18 17 16 15 14 13 12 11 10 9 8 7 6 5 4 3 2 1

PART NO.  
DWG. NO.

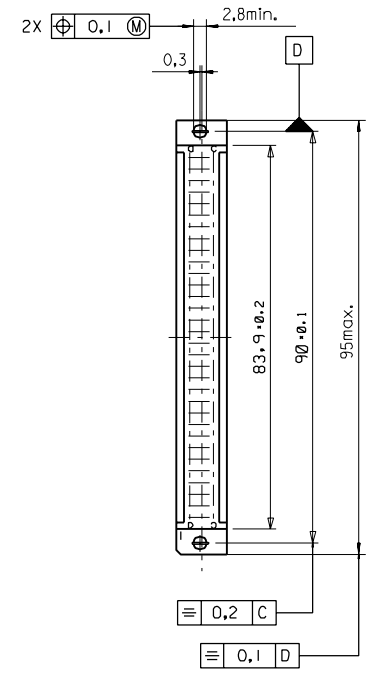
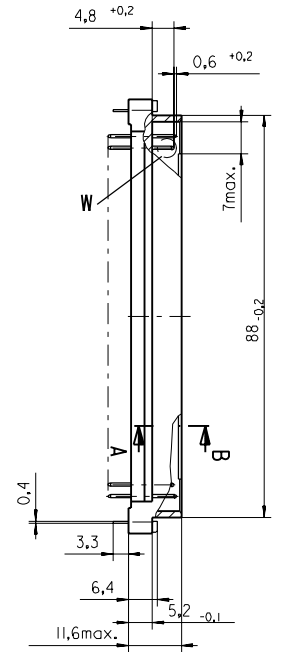
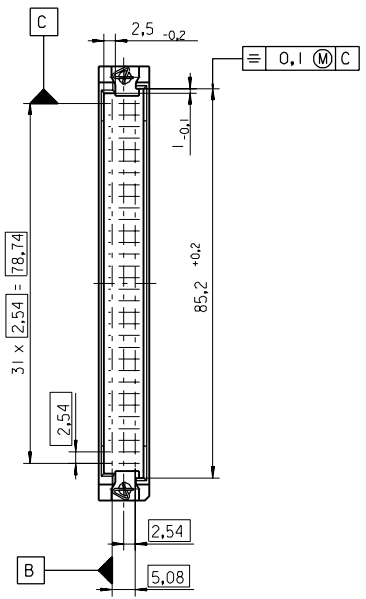
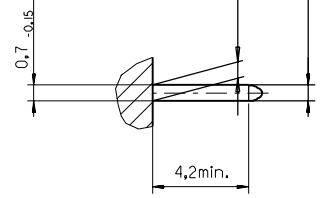
Section A - B  
5:1



View X  
5:1



View W  
5:1



FIRST ANGLE PROJECTION		REVISE ONLY ON CAD SYSTEM		SH.	REV.
first release see ECN No. 1887	L TR FOR PREVIOUS REVISIONS SEE MRI LIST	UNLESS OTHERWISE SPECIFIED TOLERANCES: ANGULAR ±2°	DRWG BY <b>Ca</b>	CAD/CAM PROJECT NAME 85013000 611	
		INCH METRIC	CHK'D BY <b>KN</b>	THIS DRAWING CONTAINS INFORMATION THAT IS PROPRIETARY TO MOLEX INC. & SHOULD NOT BE USED WITHOUT WRITTEN PERMISSION	
		3 PLACE ± . ±		TITLE <b>96 pos. Male connector acc. DIN 41612 Style R Dimensions</b>	
		2 PLACE ± . ±		SHEET NO. DATE 1 OF 95/06/07	
		1 PLACE ± . ±		MOLEX MOLEX EUROPE	
		DRAFT WHERE APPLICABLE MUST REMAIN WITHIN DIMENSIONS	APP'D BY	SCALE <b>1:1</b>	
		DESIGN DIMENSION <input checked="" type="checkbox"/> MM <input type="checkbox"/> IN.		PART NO. DWG NO. SIZE <b>SDA-85013-0001 B</b>	
		EQUIVALENT DIMENSION <input type="checkbox"/> MM <input type="checkbox"/> IN.			
		IF TWO DIMENSIONS ARE SHOWN THE UPPER IS THE DESIGN DIMENSION, LOWER IS SECONDARY			

View on mating side

○	Z	A	A	A	A	A	A	A	A	A	A	Z	A	A	A	A	A	A	A
△	Z	A	A	A	A	A	A	A	A	A	A	A	A	A	A	A	A	A	A
○	Z	A	A	A	A	A	A	A	A	A	A	Z	A	A	A	A	A	A	A

┌ ┐ ┑ ┒ ┓ └ ┕ ┖ ┗ ┘ ┙ ┚ ┛ ├ ┝ ┞ ┟ ┠ ┡ ┢ ┣ ┤ ┥ ┦ ┧ ┨ ┩ ┪ ┫ ┬ ┭ ┮ ┯ ┰ ┱ ┲ ┳ ┴ ┵ ┶ ┷ ┸ ┹ ┺ ┻ ┼ ┽ ┾ ┿

A = 89 standard contacts L=2,9  
 Z = 7 FMLB contacts +0,6 L=2,9  
 S = 96 total number of contacts

Marking	Standard
Performance level	G1/0 = Contact area perform. level I / Termination tin
Flux proof	no
Fixing clip	no
Dimensions	SDA-85013-0001 sht.1
Technical Data	PS-85013-0001

Z	G1/0	a1,2,24	b1	c1,2,24
A	G1/0	a3-23,25-32	b2-32	c3-23,25-32
Contact symbol	Perform. level	Contact position number		

first release see ECN No. 2362	REVISIONS		FOR PREVIOUS REVISIONS SEE MRI LIST		REVISIONS ONLY ON CAD SYSTEM		SH.	REV.
	LTR		SCALE		MOLEX EUROPE		SHEET NO.	DATE
		DESIGN DIMENSION <input type="checkbox"/> MM <input type="checkbox"/> IN.		CHK'D BY		PART NO.		SIZE
		EQUIVALENT DIMENSION <input type="checkbox"/> MM <input type="checkbox"/> IN.		APP'D BY		85013-3081		SDA-85013-3081
		DRAFT WHERE APPLICABLE MUST REMAIN WITHIN DIMENSIONS		SIGN		THIS DRAWING CONTAINS INFORMATION THAT IS PROPRIETARY TO MOLEX INC. & SHOULD NOT BE USED WITHOUT WRITTEN PERMISSION		
		UNLESS OTHERWISE SPECIFIED TOLERANCES: ANGULAR ±2°		SIGN		TITLE		
		3 PLACE ± . INCH METRIC		CQ		96 pos. Male connector		
		2 PLACE ± .		CHK'D BY		acc. DIN 41612 style R		
		1 PLACE ± .		KN		contacts arrangement		
				APP'D BY		molex		
				JB		1 OF 1		96 / 12 / 16