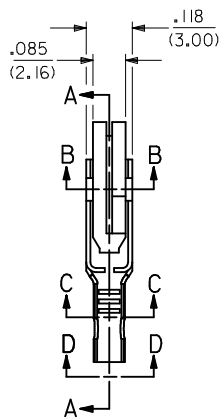
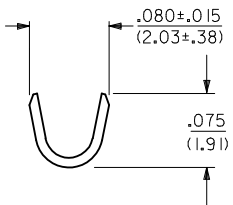
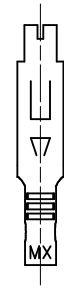
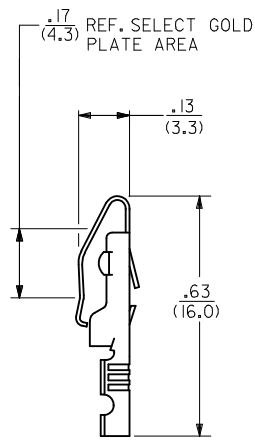


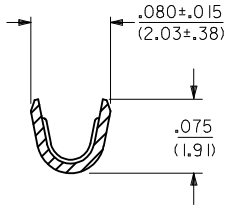
SECTION A-A



SECTION C-C



VIEW D-D



LEGEND

4573-\*\*\*  
 FORM  
 BLANK=CHAIN  
 L=LOOSE  
 PLATING  
 (PER SDES-88)

- NOTES:  
 1) MATERIAL: BRASS, ALLOY C260, .010/(0.25) THICK.  
 2) FINISH:  
 (P909) \* : OVERALL HOT TIN DIP: .000100/(0.00254) MIN.  
 (P555) : SELECT GOLD: .000015/(0.00038) MIN.  
 OVERALL NICKEL: .000030/(0.00076) MIN.  
 (P228) : SELECT GOLD: .000030/(0.00076) MIN.  
 SELECT TIN: .000100/(0.00254) MIN.  
 OVERALL NICKEL UNDERPLATE .000050/(0.00127) MIN.  
 \* THE PRIMARY SHIPPING CARTON WILL BE LABELED "COMPLIANT TO  
 RoHS DIRECTIVE 2002/95/EC AND ELV ANNEX II OF DIRECTIVE 2000/53/EC".  
 CARTONS WITHOUT THIS LABEL MAY CONTAIN PRODUCT WITH TIN/LEAD PLATING.

- 3) PRODUCT SPECIFICATION: PS-09-50 APPLIES.  
 4) TERMINAL FOR USE WITH 24-30 AWG WIRE.

CHANGE P/N'S EC NO: UCP2009-1522 DRAWN: KIPPER 2008/12/15 CHKD: SSOUSEK 2008/12/18 APPR: F SMITH 2008/12/22	DESCRIPTION	QUALITY SYMBOLS	GENERAL TOLERANCES (UNLESS SPECIFIED)		DIMENSION STYLE	SCALE	DESIGN UNITS	THIRD ANGLE PROJECTION	
		 	mm	INCH	IN/MM	1:1	INCH		
REV F2	4 PLACES ± --- ± --- 3 PLACES ± --- ± .010 2 PLACES ± 0.25 ± .014 1 PLACE ± 0.36 ± --- ANGULAR ± 1/2°	DRAWN BY		DATE	TITLE				
		ROBERTS		08/15/91	TERMINAL CRIMP ON				
CHECKED BY		DATE		APPROVED BY					
PATEL		08/15/91		LENZ		08/15/91			
MATERIAL NO.		SEE CHART		DOCUMENT NO.		SD-4573			
SIZE		THIS DRAWING CONTAINS INFORMATION THAT IS PROPRIETARY TO MOLEX INCORPORATED AND SHOULD NOT BE USED WITHOUT WRITTEN PERMISSION							
						SHEET NO.		1 OF 2	

PART NO.	ENG. NO.	PART NO.	ENG. NO.	PART NO.	ENG. NO.	PART NO.	ENG. NO.
08-03-0305	4573-P909						
08-03-0306	4573-P909L						
08-05-0303	4573-P555						
08-05-0304	4573-P555L						
50-36-2431	4573-P228						
50-36-2432	4573-P228L						

COLUMN NO. 1 CON'T. IN COLUMN NO. SHEET NO. COLUMN NO. 2 CON'T. IN COLUMN NO. SHEET NO. COLUMN NO. 3 CON'T. IN COLUMN NO. SHEET NO. COLUMN NO. 4 CON'T. IN COLUMN NO. SHEET NO.

<b>CHANGE P/N'S</b> EC NO: UCP2009-1522 DRAWN: KIPPER 2008/12/15 CHKD: SSOUSEK 2008/12/18 APPR: FSMITH 2008/12/22 REV: F2	QUALITY SYMBOLS ▽=0 ▽=0	GENERAL TOLERANCES (UNLESS SPECIFIED) 4 PLACES ± --- ± --- 3 PLACES ± --- ± .010 2 PLACES ± 0.25 ± .014 1 PLACE ± 0.35 ± --- ANGULAR ± 1/2°	DIMENSION STYLE IN/MM DRAWN BY: ROBERTS CHECKED BY: PATEL APPROVED BY: LENZ DATE: 08/26/91	SCALE: 1:1 DESIGN UNITS: INCH THIRD ANGLE PROJECTION	TITLE: TERMINAL CANTILEVER STRAIGHT-ON CRIMP TYPE MOLEX INCORPORATED DOCUMENT NO. SD-4573 SHEET NO. 2 OF 2
		DRAFT WHERE APPLICABLE MUST REMAIN WITHIN DIMENSIONS	SEE CHART	THIS DRAWING CONTAINS INFORMATION THAT IS PROPRIETARY TO MOLEX INCORPORATED AND SHOULD NOT BE USED WITHOUT WRITTEN PERMISSION	