

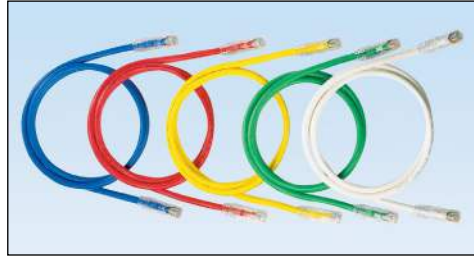
# NetKey® Category 6A UTP Patch Cords

# PANDUIT®

DATA SHEET

## specifications

Category 6A/Class E<sub>A</sub> F/UTP patch cords are constructed of 26 AWG shielded twisted pair stranded copper cable with a UTP modular plug on each end. Patch cords are offered in multiple colored F/UTP cable for design flexibility with a strain relief boot on each modular plug. All patch cords are wired to be compatible with both T568A and T568B wiring schemes.



## technical information

<b>Category 6A/Class E<sub>A</sub> performance:</b>	Exceeds ANSI/TIA-568-C.2 Category 6A and ISO 11801 Class E <sub>A</sub> channel requirements at swept frequencies up to 500 MHz Meets ANSI/TIA-568-C.2 and ISO 11801 Category 6A component requirements at swept frequencies up to 500 MHz
<b>Cable diameter:</b>	0.252 in. (6.3mm) nominal
<b>FCC compliance:</b>	Complies with ANSI/TIA-1096-A (formerly FCC Part 68); contacts plated with 50 microinches of gold for superior performance
<b>IEC compliance:</b>	Meets IEC 60603-7
<b>PoE compliance:</b>	Supports IEEE 802.3af/802.3at and proposed 802.3bt type 3 and type 4 PoE applications
<b>Safety compliance:</b>	cULus Listed; UL 1863 and CAN/CSA-C22.2 (UL File E129886)
<b>RoHS compliance:</b>	Compliant
<b>Flammability rating:</b>	CM/LSZH dual rated

## key features and benefits

<b>100% performance tested for wiremap, NEXT, and return loss</b>	Confidence that each patch cord delivers specified performance
<b>Integral pair manager</b>	Optimizes performance and consistency by reducing untwist at plug
<b>Patented tangle free latch</b>	Prevents snags and provides easy release saving time on frequent moves, adds, and changes
<b>Slender strain relief boot</b>	Provides easy access in high-density applications
<b>Identification</b>	Provides identification of performance level, length, and quality control number for future traceability
<b>Variety of colors and lengths available</b>	Meets individual length and color-coding requirements

## applications

The NetKey® Category 6A UTP Patch Cords are a component of the NetKey® Category 6A Copper Cabling System. Interoperable and backward compatible, this end-to-end system provides design flexibility to protect network investments well into the future.

Key applications include:

- 10GBASE-T Ethernet
- Wireless deployment
- Power over Ethernet
- Video streaming

### NetKey® Network Components

#### NetKey® Category 6A UTP Patch Cords

**Foot lengths:** NK6APC3\*  
**Meter lengths:** NK6APC1M\*\*

#### NetKey® Category 6A Jack Module

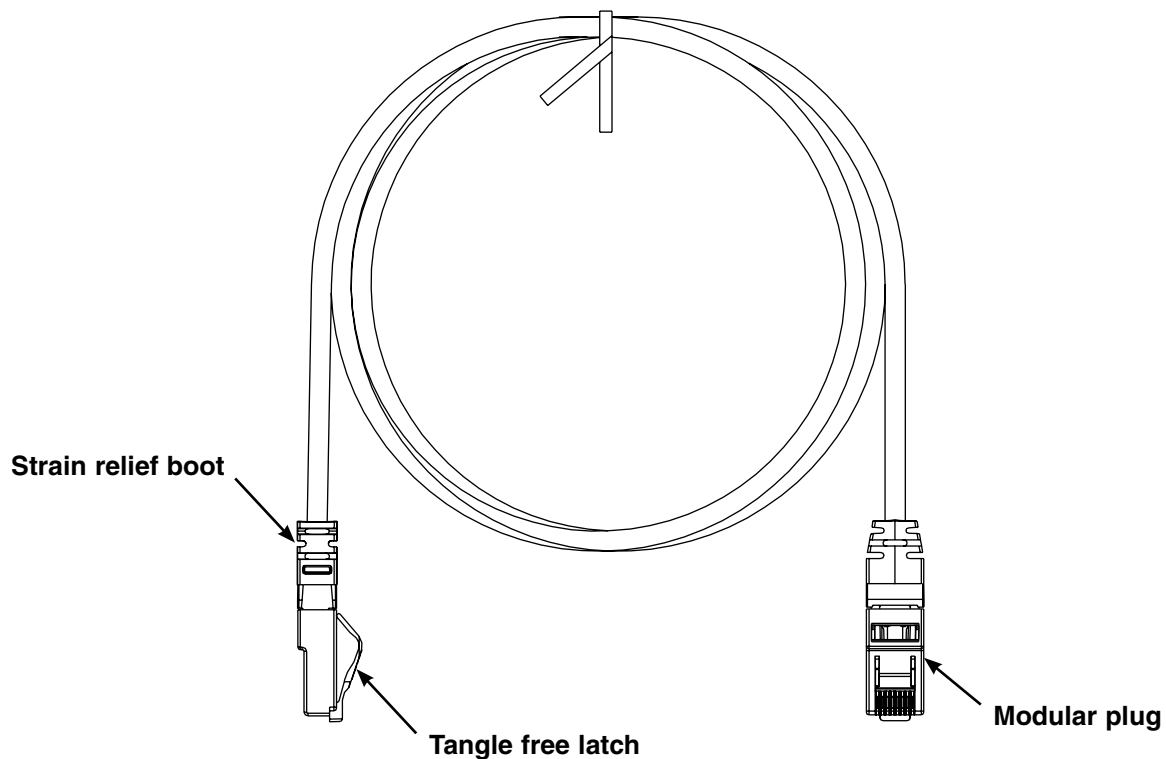
**Punchdown Module:** NK6X88M\*\*

\*For standard lengths other than 3 feet (5, 7, 10, 14, 20, 25, 30, 40, or 50) change the length designation in part number to the desired length. For standard cable colors other than Off White, add suffix BL (Black), BU (Blue), RD (Red), YL (Yellow), GR (Green), or GY (Gray) at the end of the part number. For example, the part number for a blue 5 foot patch cord is NK6APC5BU.

\*\*For standard lengths other than 1 meter (2, 3, 4, 5, 7, 10, 12, or 15) change the length designation in part number to the desired length. For standard cable colors other than Off White, add suffix BL (Black), BU (Blue), RD (Red), YL (Yellow), GR (Green), or GY (Gray) at the end of the part number. For example, the part number for a blue 5 meter patch cord is NK6APC5MBU.

^To designate a color, add suffix IW (Off White), EI (Electric Ivory), IG (Int'l Gray), WH (White), BL (Black), OR (Orange), RD (Red), BU (Blue), GR (Green), or YL (Yellow).

# NetKey® Category 6A UTP Patch Cords



---

## WORLDWIDE SUBSIDIARIES AND SALES OFFICES

PANDUIT CANADA  
Markham, Ontario  
cs-cdn@panduit.com  
Phone: 800.777.3300

PANDUIT EUROPE LTD.  
London, UK  
cs-emea@panduit.com  
Phone: 44.20.8601.7200

PANDUIT SINGAPORE PTE. LTD.  
Republic of Singapore  
cs-ap@panduit.com  
Phone: 65.6305.7575

PANDUIT JAPAN  
Tokyo, Japan  
cs-japan@panduit.com  
Phone: 81.3.6863.6000

PANDUIT LATIN AMERICA  
Guadalajara, Mexico  
cs-la@panduit.com  
Phone: 52.33.3777.6000

PANDUIT AUSTRALIA PTY. LTD.  
Victoria, Australia  
cs-aus@panduit.com  
Phone: 61.3.9794.9020

For a copy of Panduit product warranties, log on to [www.panduit.com/warranty](http://www.panduit.com/warranty)

For more information

Visit us at [www.panduit.com](http://www.panduit.com)

Contact Customer Service by email: [cs@panduit.com](mailto:cs@panduit.com)  
or by phone: 800.777.3300

**PANDUIT®**

©2015 Panduit Corp.  
ALL RIGHTS RESERVED.  
NKDS56--WW-ENG  
10/2015