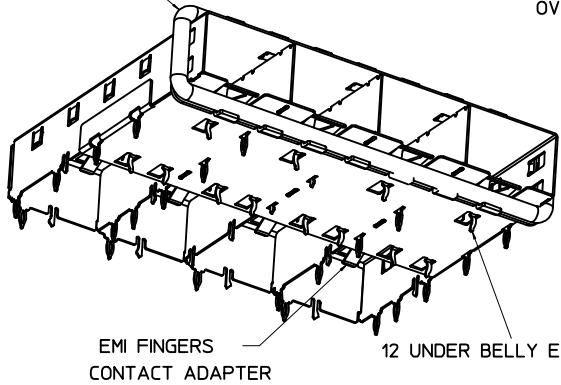
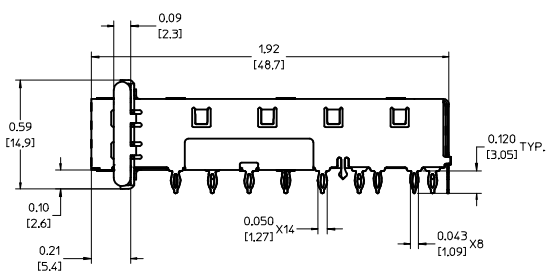
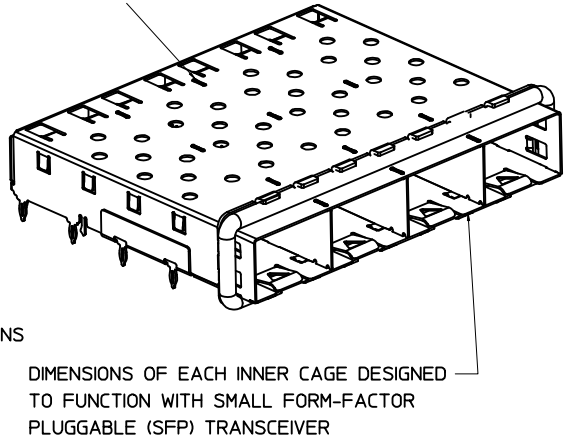


360° ELASTOMER GASKET  
 COMPLIES WITH (SFP) MSA  
 BOARD AND BEZEL LOCATIONS



INNER WALL TABS ARE COINED  
 OVER BASE AND COVER FOR RIGIDITY

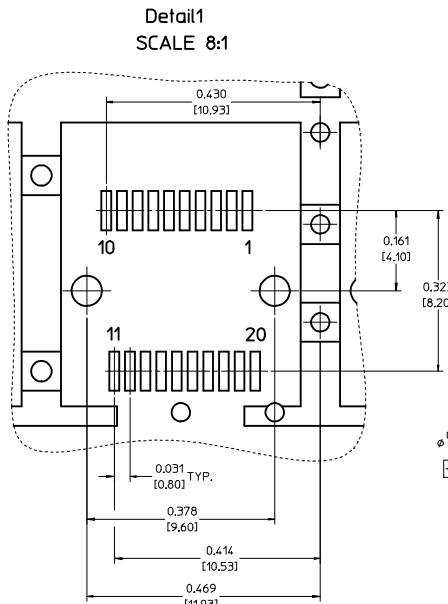


- NOTES:
- PRESS FIT LEGS 0.120" LONG-  
 0.062 [1.57] MINIMUM PCB THICKNESS. FOR SINGLE SIDED USE ONLY.
  - MATERIAL: COPPER ALLOY  
 PLATING: NONE
  - NOTE: A PRE-PLATED NICKEL VERSION IS AVAILABLE.  
 REFER TO DOCUMENT SD-74728-420
  - REFERENCE DOCUMENTS:  
 PRODUCT SPECIFICATION: PS-74728-000  
 COSMETIC SPECIFICATIONS: WI-HP-7-2774 AND WI-HPA-7-0093  
 TEST SUMMARY: TS-74728-0415
  - MATES WITH SERIES 74728. LIGHT PIPE COVER ASSEMBLY.
  - THIS PART MEETS THE RESTRICTION OF HAZARDOUS SUBSTANCES IN  
 ELECTRICAL AND ELECTRONIC EQUIPMENT (ROHS) DIRECTIVE (2002/95/EC).

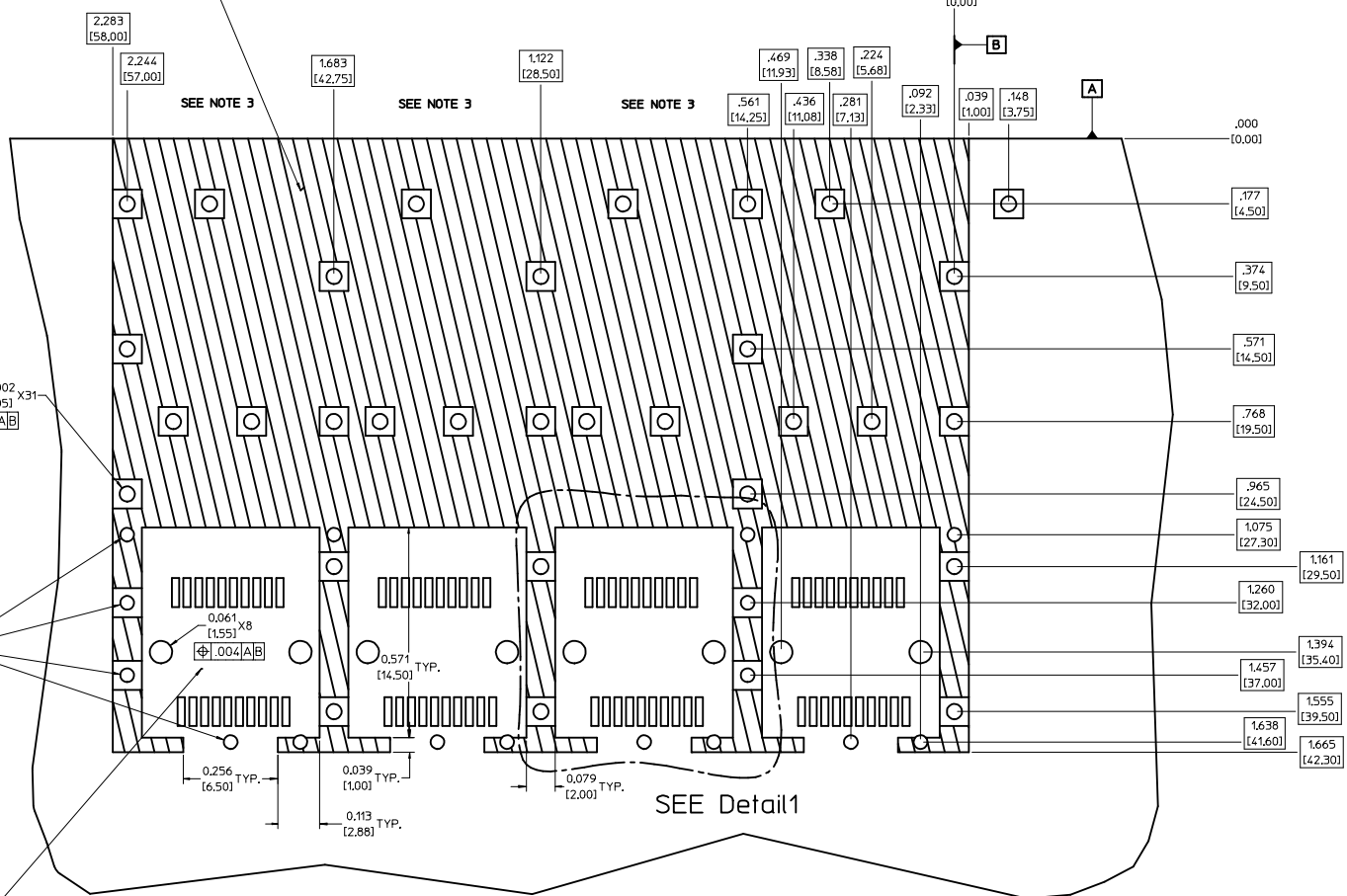
EC NO: USY2006-0225 DRN:KSMONSON006/0124 CHKD:BRUSSELL2006/0124 APPR:BRUSSELL2006/0125	QUALITY SYMBOLS -0 -0	GENERAL TOLERANCES (UNLESS SPECIFIED) .mm    INCH		SCALE 3:1	DESIGN UNITS METRIC	THIRD ANGLE PROJECTION	REVISE ON CAD ONLY		
		4 PLACES ± --- ± --- 3 PLACES ± --- ± .005 2 PLACES ± 0.13 ± .01 1 PLACE ± 0.25 ± ---	DIMENSION STYLE IN/MM	DRAWN BY KSIMONSO	DATE 2005/04/07	TITLE 1X4 SFP CAGE ASSEMBLY, FRAME W/ TABS, W/ 0.090 OD GASKET			
		ANGULAR ± 1 °	CHECKED BY BRUSSELL	DATE 2005/04/07	MOLEX INCORPORATED				
		DRAFT WHERE APPLICABLE MUST REMAIN WITHIN DIMENSIONS	APPROVED BY BRUSSELL	DATE 2005/04/07	MATERIAL NO. 747280417	DOCUMENT NO. SD-74728-417	SHEET NO. 1 OF 4	THIS DRAWING CONTAINS INFORMATION THAT IS PROPRIETARY TO MOLEX INCORPORATED AND SHOULD NOT BE USED WITHOUT WRITTEN PERMISSION	

20 | 19 | 18 | 17 | 16 | 15 | 14 | 13 | 12 | 11 | 74728 | 9 | 8 | 7 | 6 | 5 | 4 | 3 | 2 | 1

### PCB LAYOUT FOR SINGLE SIDE MOUNTING



CROSS-HATCHED AREA DENOTES COMPONENT AND TRACE KEEP-OUT (EXCEPT CHASSIS GROUND)



$\phi .037 \pm .002$   
 $\phi .095 \pm .005$   
 $\phi .004 [A/B]$   
X31  
X8  
X2  
SMALLER HOLE ON THESE FOUR ROWS ONLY

THIS AREA DENOTES COMPONENT KEEP-OUT (TRACES ALLOWED)

- NOTES:**
- PADS AND VIAS GO TO CHASSIS GROUND, (34 PLACES). RECOMMENDED PADS TO BE 2mm SQUARE.
  - PLATING OPTIONAL FOR THROUGH HOLES, (12 PLACES).
  - HOLE PATTERN REPEATS FOR EACH PORT, SPACING BETWEEN PORTS IS 14.25mm.

EC NO: USY2006-0225 DRW:KSIMONSON006/01/24 CHK:BRUSSELL2006/01/24 APPR:BRUSSELL2006/01/25	QUALITY SYMBOLS	GENERAL TOLERANCES (UNLESS SPECIFIED)	SCALE 6:1	DESIGN UNITS METRIC	THIRD ANGLE PROJECTION	REVISE ON CAD ONLY
	-0 0	4 PLACES ± --- ± --- 3 PLACES ± --- ± .005 2 PLACES ± 0.13 ± .01 1 PLACE ± 0.25 ± --- ANGULAR ± 1°	DIMENSION STYLE IN/MM		TITLE 1X4 SFP CAGE ASSEMBLY, FRAME W/ TABS, W/ 0.090 OD GASKET	
			DRAWN BY KSIMONSON		DATE 2005/04/07	
	DESCRIPTION	DRAFT WHERE APPLICABLE MUST REMAIN WITHIN DIMENSIONS	APPROVED BY BRUSSELL	DATE 2005/04/07	MATERIAL NO. 747280417	DOCUMENT NO. SD-74728-417

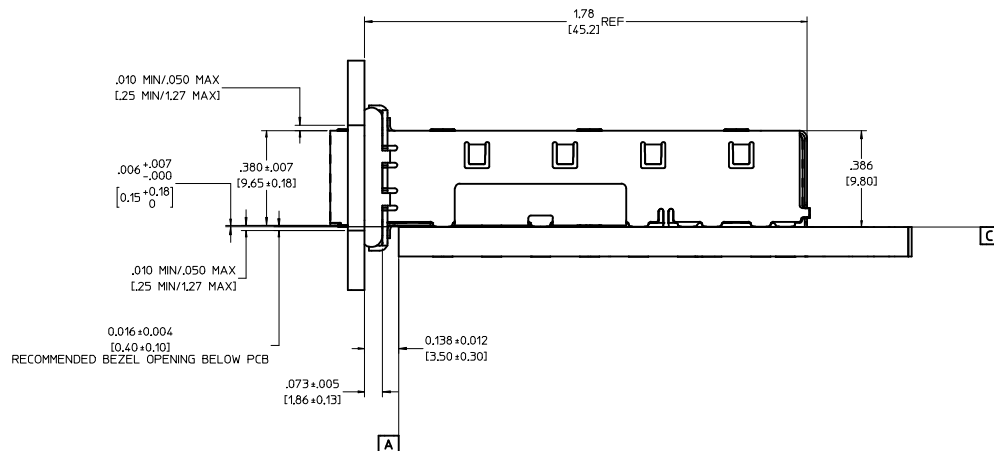
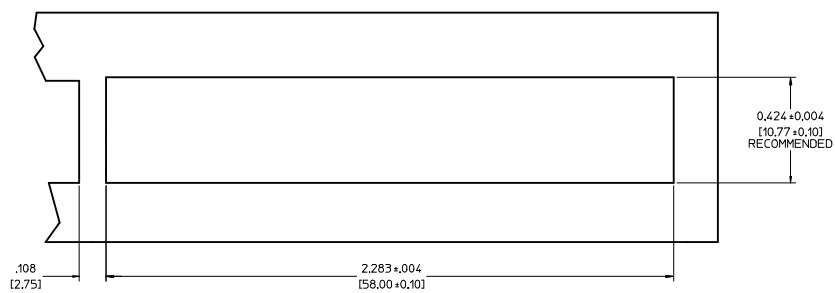
**MOLEX INCORPORATED**

THIS DRAWING CONTAINS INFORMATION THAT IS PROPRIETARY TO MOLEX INCORPORATED AND SHOULD NOT BE USED WITHOUT WRITTEN PERMISSION

19 | 18 | 17 | 16 | 15 | 14 | 13 | 12 | 11 | 10 | 9 | 8 | 7 | 6 | 5 | 4 | 3 | 2 | 1

20 | 19 | 18 | 17 | 16 | 15 | 14 | 13 | 12 | 11 | 74728 | 9 | 8 | 7 | 6 | 5 | 4 | 3 | 2 | 1

BEZEL AND BOARD POSITION DIMENSIONS FOR SINGLE SIDE MOUNTING



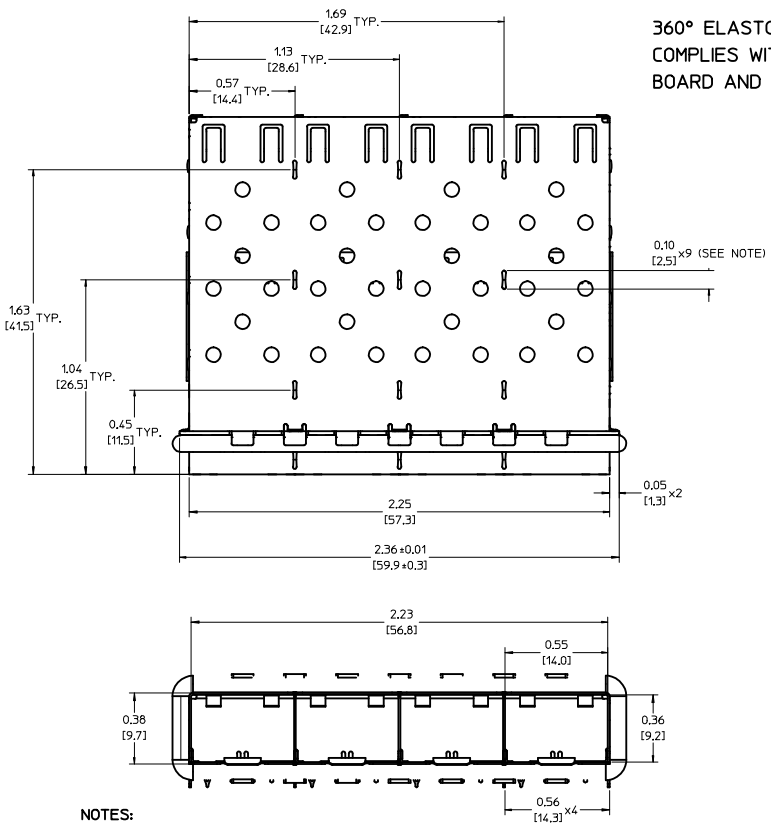
EC NO: USY2006-0225 DRW: KKSIMONSON006/01/24 CHKD: BRUSSELL2006/01/24 APPR: BRUSSELL2006/01/25	QUALITY SYMBOLS ▽ - 0 ▽ - 0	GENERAL TOLERANCES (UNLESS SPECIFIED)		SCALE <b>4:1</b>	DESIGN UNITS <b>METRIC</b>	THIRD ANGLE PROJECTION	REVISE ON CAD ONLY		
		DIMENSION STYLE <b>IN/MM</b>		TITLE <b>1X4 SFP CAGE ASSEMBLY, FRAME W/ TABS, W/ 0.090 OD GASKET</b>		MOLEX INCORPORATED			
		4 PLACES ± --- ± --- 3 PLACES ± --- ± .005 2 PLACES ± 0.13 ± .01 1 PLACE ± 0.25 ± ---		DRAWN BY KSIMONSO		DATE 2005/04/07		SHEET NO. 3 OF 4	
		ANGULAR ± 1 ° DRAFT WHERE APPLICABLE MUST REMAIN WITHIN DIMENSIONS		CHECKED BY BRUSSELL		DATE 2005/04/07		MATERIAL NO. 747280417	
APPROVED BY BRUSSELL		DATE 2005/04/07		DOCUMENT NO. SD-74728-417		THIS DRAWING CONTAINS INFORMATION THAT IS PROPRIETARY TO MOLEX INCORPORATED AND SHOULD NOT BE USED WITHOUT WRITTEN PERMISSION			

20 | 19 | 18 | 17 | 16 | 15 | 14 | 13 | 12 | 11 | 74728 | 9 | 8 | 7 | 6 | 5 | 4 | 3 | 2 | 1

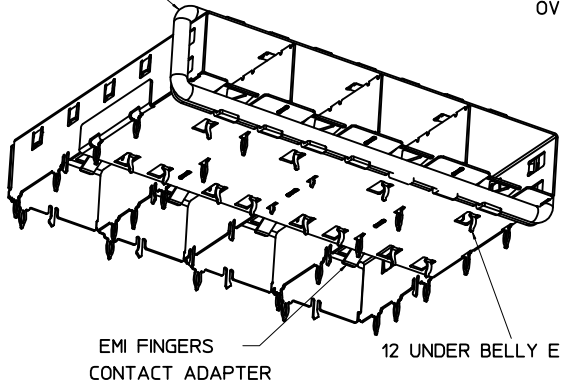
DATE	REV	CHANGES	COMMENTS
2005/04/07	A	INITIAL RELEASE	N/A
2006/01/20	B	MODIFIED NOTES	DOCUMENT CHANGE ONLY

EC NO: USY2006-0225 DRW:KSIMONSON006/01/24 CHK:D:BRUSSELL2006/01/24 APPR:BRUSSELL2006/01/25 B	QUALITY SYMBOLS	GENERAL TOLERANCES (UNLESS SPECIFIED)	SCALE 1:1	DESIGN UNITS METRIC	THIRD ANGLE PROJECTION	REVISE ON CAD ONLY																				
	▽-0 ▽-0	<table border="1"> <thead> <tr> <th></th> <th>mm</th> <th>INCH</th> </tr> </thead> <tbody> <tr> <td>4 PLACES</td> <td>± .13</td> <td>± .005</td> </tr> <tr> <td>3 PLACES</td> <td>± .13</td> <td>± .01</td> </tr> <tr> <td>2 PLACES</td> <td>± 0.25</td> <td>± .01</td> </tr> <tr> <td>1 PLACE</td> <td>± 0.25</td> <td>± .01</td> </tr> </tbody> </table>		mm	INCH	4 PLACES	± .13	± .005	3 PLACES	± .13	± .01	2 PLACES	± 0.25	± .01	1 PLACE	± 0.25	± .01	<table border="1"> <thead> <tr> <th colspan="2">DIMENSION STYLE</th> </tr> <tr> <th>IN/MM</th> <th>DATE</th> </tr> </thead> <tbody> <tr> <td>IN/MM</td> <td>2005/04/07</td> </tr> </tbody> </table>	DIMENSION STYLE		IN/MM	DATE	IN/MM	2005/04/07	TITLE <b>1X4 SFP CAGE ASSEMBLY,                  FRAME W/ TABS,                  W/ 0.090 OD GASKET</b>	
			mm	INCH																						
	4 PLACES	± .13	± .005																							
3 PLACES	± .13	± .01																								
2 PLACES	± 0.25	± .01																								
1 PLACE	± 0.25	± .01																								
DIMENSION STYLE																										
IN/MM	DATE																									
IN/MM	2005/04/07																									
DRAFT WHERE APPLICABLE MUST REMAIN WITHIN DIMENSIONS	APPROVED BY BRUSSELL	DATE 2005/04/07	MATERIAL NO. 747280417	DOCUMENT NO. SD-74728-417	SHEET NO. 4 OF 4																					
THIS DRAWING CONTAINS INFORMATION THAT IS PROPRIETARY TO MOLEX INCORPORATED AND SHOULD NOT BE USED WITHOUT WRITTEN PERMISSION																										

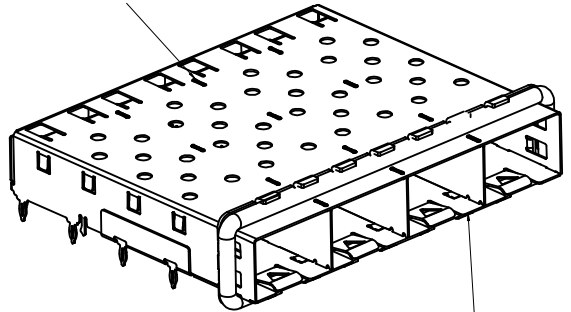
19 | 18 | 17 | 16 | 15 | 14 | 13 | 12 | 11 | 10 | 9 | 8 | 7 | 6 | 5 | 4 | 3 | 2 | 1



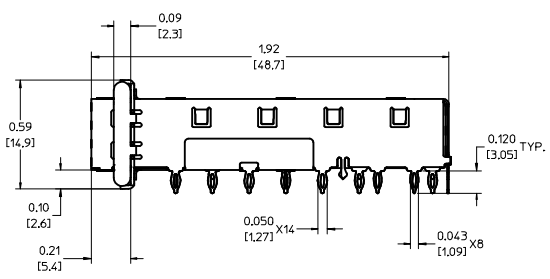
360° ELASTOMER GASKET  
COMPLIES WITH (SFP) MSA  
BOARD AND BEZEL LOCATIONS



INNER WALL TABS ARE COINED  
OVER BASE AND COVER FOR RIGIDITY



DIMENSIONS OF EACH INNER CAGE DESIGNED  
TO FUNCTION WITH SMALL FORM-FACTOR  
PLUGGABLE (SFP) TRANSCEIVER

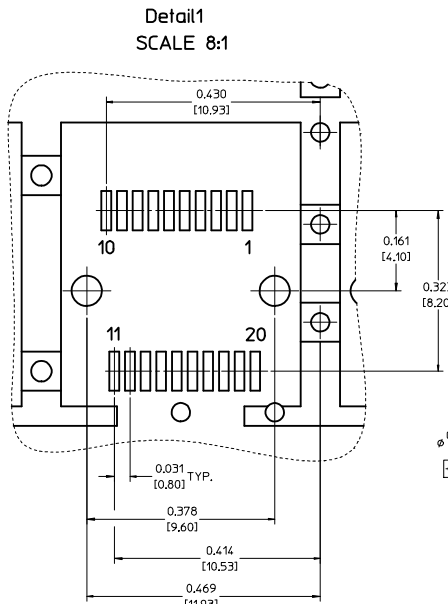


- NOTES:
- PRESS FIT LEGS 0.120" LONG- 0.062 [1.57] MINIMUM PCB THICKNESS. FOR SINGLE SIDED USE ONLY.
  - MATERIAL: COPPER ALLOY  
PLATING: NONE  
  
NOTE: A PRE-PLATED NICKEL VERSION IS AVAILABLE.  
REFER TO DOCUMENT SD-74728-420
  - REFERENCE DOCUMENTS:  
PRODUCT SPECIFICATION: PS-74728-000  
COSMETIC SPECIFICATIONS: WI-HP-7-2774 AND WI-HPA-7-0093  
TEST SUMMARY: TS-74728-0415
  - MATES WITH SERIES 74728. LIGHT PIPE COVER ASSEMBLY.
  - THIS PART MEETS THE RESTRICTION OF HAZARDOUS SUBSTANCES IN ELECTRICAL AND ELECTRONIC EQUIPMENT (ROHS) DIRECTIVE (2002/95/EC).

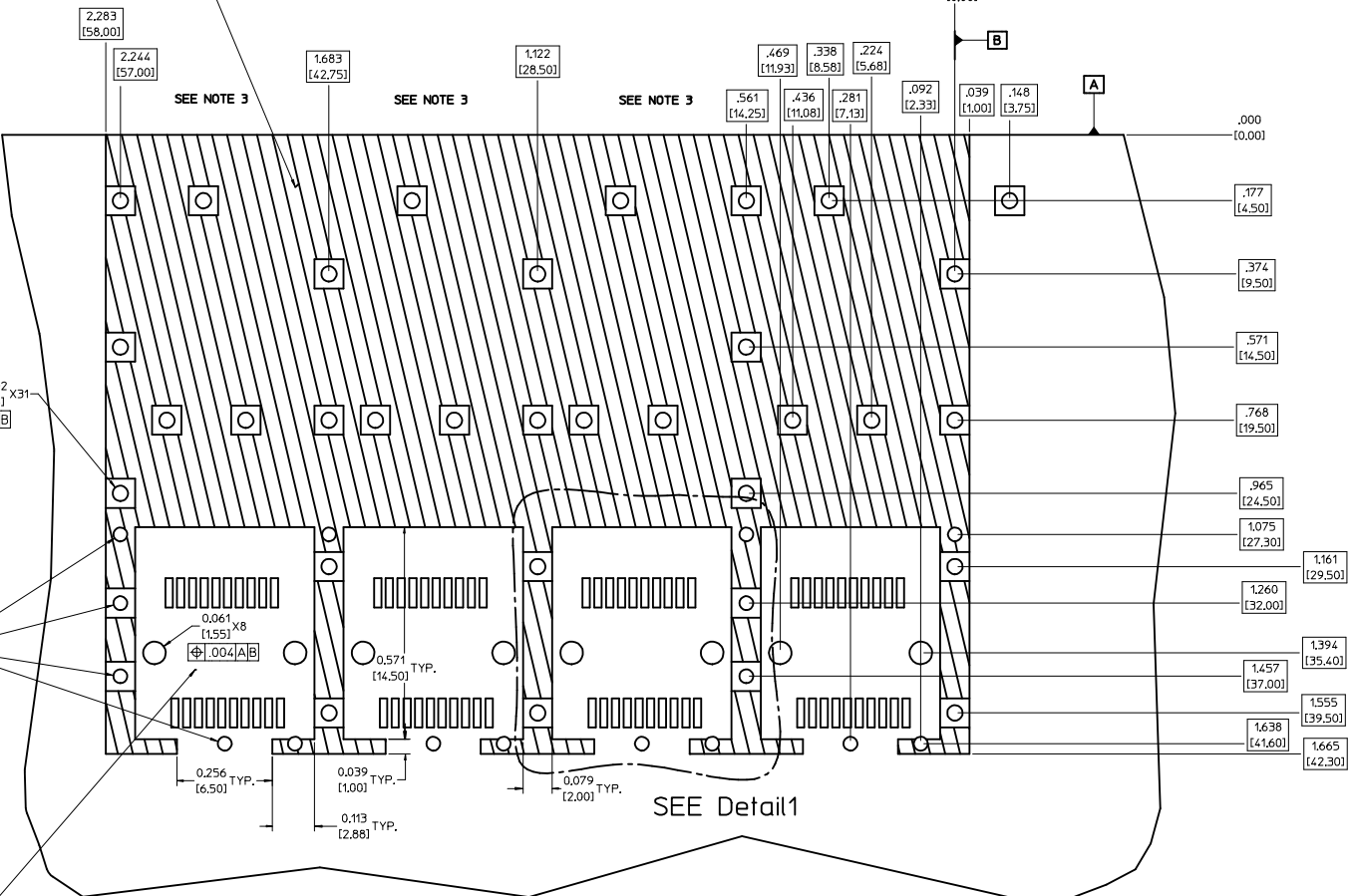
EC NO: USY2006-0225 DRN:KSMONSON006/0124 CHKD:BRUSSELL2006/0124 APPR:BRUSSELL2006/0125	QUALITY SYMBOLS -0 -0	GENERAL TOLERANCES (UNLESS SPECIFIED) .mm    INCH 4 PLACES ± --- ± --- 3 PLACES ± --- ± .005 2 PLACES ± 0.13 ± .01 1 PLACE ± 0.25 ± --- ANGULAR ± 1° DRAFT WHERE APPLICABLE MUST REMAIN WITHIN DIMENSIONS	SCALE	DESIGN UNITS	THIRD ANGLE PROJECTION REVISE ON CAD ONLY
			3:1	METRIC	
			DIMENSION STYLE		
			IN/MM		
DESCRIPTION B	DRAWN BY KSMONSON CHECKED BY BRUSSELL APPROVED BY BRUSSELL	DATE 2005/04/07 DATE 2005/04/07 DATE 2005/04/07	TITLE	1X4 SFP CAGE ASSEMBLY, FRAME W/ TABS, W/ 0.090 OD GASKET	
			MOLEX INCORPORATED		
			MATERIAL NO.	DOCUMENT NO.	SHEET NO.
			747280417	SD-74728-417	1 OF 4
THIS DRAWING CONTAINS INFORMATION THAT IS PROPRIETARY TO MOLEX INCORPORATED AND SHOULD NOT BE USED WITHOUT WRITTEN PERMISSION					

20 | 19 | 18 | 17 | 16 | 15 | 14 | 13 | 12 | 11 | 74728 | 9 | 8 | 7 | 6 | 5 | 4 | 3 | 2 | 1

### PCB LAYOUT FOR SINGLE SIDE MOUNTING



CROSS-HATCHED AREA DENOTES  
COMPONENT AND TRACE KEEP-OUT  
(EXCEPT CHASSIS GROUND)



$\phi 0.041 \pm 0.002$  X31  
 $\phi [0.004] [A/B]$

$\phi 0.037 \pm 0.002$  X4  
 $\phi [0.95 \pm 0.05]$   
 $\phi [0.004] [A/B]$

SMALLER HOLE ON  
THESE FOUR ROWS ONLY

THIS AREA DENOTES  
COMPONENT KEEP-OUT  
(TRACES ALLOWED)

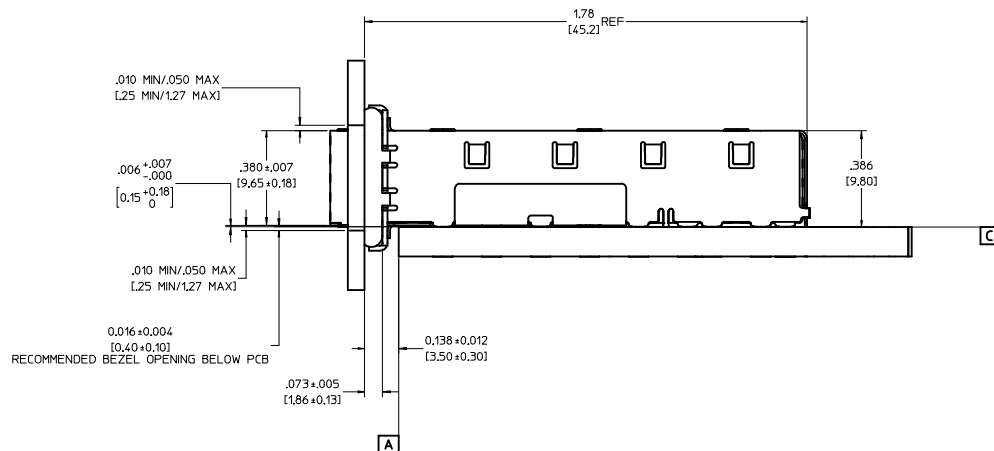
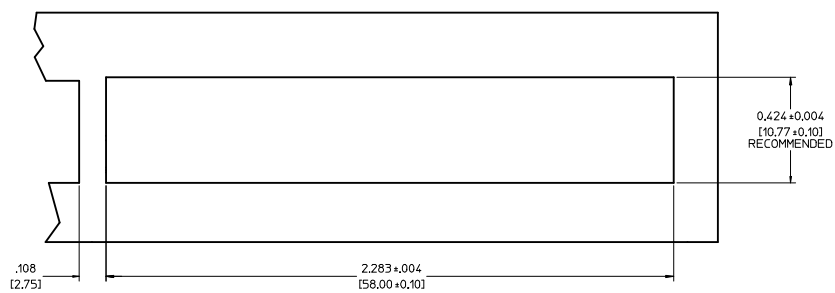
- NOTES:**
- PADS AND VIAS GO TO CHASSIS GROUND, (34 PLACES).  
RECOMMENDED PADS TO BE 2mm SQUARE.
  - PLATING OPTIONAL FOR THROUGH HOLES, (12 PLACES).
  - HOLE PATTERN REPEATS FOR EACH PORT,  
SPACING BETWEEN PORTS IS 14.25mm.

EC NO: USY2006-0225 DRW: KSIMONSON006/01/24 CHKD: BRUSSELL2006/01/24 APPR: BRUSSELL2006/01/25	QUALITY SYMBOLS	GENERAL TOLERANCES (UNLESS SPECIFIED)	SCALE: 6:1	DESIGN UNITS: METRIC	THIRD ANGLE PROJECTION	REVISE ON CAD ONLY
	-0 -0	4 PLACES ± --- ± --- 3 PLACES ± --- ± .005 2 PLACES ± 0.13 ± .01 1 PLACE ± 0.25 ± --- ANGULAR ± 1°	DIMENSION STYLE: IN/MM		TITLE: 1X4 SFP CAGE ASSEMBLY, FRAME W/ TABS, W/ 0.090 OD GASKET	
			DRAWN BY: KSIMONSON DATE: 2005/04/07		MATERIAL NO.: MOLEX INCORPORATED	
	DESCRIPTION	DRAFT WHERE APPLICABLE MUST REMAIN WITHIN DIMENSIONS	APPROVED BY: BRUSSELL DATE: 2005/04/07	DOCUMENT NO.: SD-74728-417		SHEET NO.: 2 OF 4

19 | 18 | 17 | 16 | 15 | 14 | 13 | 12 | 11 | 10 | 9 | 8 | 7 | 6 | 5 | 4 | 3 | 2 | 1

20 | 19 | 18 | 17 | 16 | 15 | 14 | 13 | 12 | 11 | 74728 | 9 | 8 | 7 | 6 | 5 | 4 | 3 | 2 | 1

BEZEL AND BOARD POSITION DIMENSIONS FOR SINGLE SIDE MOUNTING



EC NO: USY2006-0225 DRW: KSIMONSON06/01/24 CHKD: BRUSSELL2006/01/24 APPR: BRUSSELL2006/01/25	QUALITY SYMBOLS -0 -0	GENERAL TOLERANCES (UNLESS SPECIFIED)		SCALE 4:1	DESIGN UNITS METRIC	THIRD ANGLE PROJECTION	REVISE ON CAD ONLY		
		DIMENSION STYLE IN/MM		TITLE 1X4 SFP CAGE ASSEMBLY, FRAME W/ TABS, W/ 0.090 OD GASKET		MOLEX INCORPORATED			
		4 PLACES ± --- ± --- 3 PLACES ± --- ± .005 2 PLACES ± 0.13 ± .01 1 PLACE ± 0.25 ± ---		DRAWN BY KSIMONSO		DATE 2005/04/07		MATERIAL NO. 747280417	
		ANGULAR ± 1 °		CHECKED BY BRUSSELL		DATE 2005/04/07		DOCUMENT NO. SD-74728-417	
DRAFT WHERE APPLICABLE MUST REMAIN WITHIN DIMENSIONS		APPROVED BY BRUSSELL		DATE 2005/04/07		SHEET NO. 3 OF 4			
THIS DRAWING CONTAINS INFORMATION THAT IS PROPRIETARY TO MOLEX INCORPORATED AND SHOULD NOT BE USED WITHOUT WRITTEN PERMISSION									

20 | 19 | 18 | 17 | 16 | 15 | 14 | 13 | 12 | 11 | 74728 | 9 | 8 | 7 | 6 | 5 | 4 | 3 | 2 | 1

DATE	REV	CHANGES	COMMENTS
2005/04/07	A	INITIAL RELEASE	N/A
2006/01/20	B	MODIFIED NOTES	DOCUMENT CHANGE ONLY

EC NO: USY2006-0225 DRW:KSIMONSON006/01/24 CHK:D:BRUSSELL2006/01/24 APPR:BRUSSELL2006/01/25 B	QUALITY SYMBOLS	GENERAL TOLERANCES (UNLESS SPECIFIED)	SCALE 1:1	DESIGN UNITS METRIC	THIRD ANGLE PROJECTION	REVISE ON CAD ONLY																				
	▽-0 ▽-0	<table border="1"> <thead> <tr> <th></th> <th>mm</th> <th>INCH</th> </tr> </thead> <tbody> <tr> <td>4 PLACES</td> <td>± .13</td> <td>± .005</td> </tr> <tr> <td>3 PLACES</td> <td>± .075</td> <td>± .003</td> </tr> <tr> <td>2 PLACES</td> <td>± 0.13</td> <td>± .01</td> </tr> <tr> <td>1 PLACE</td> <td>± 0.25</td> <td>± .01</td> </tr> </tbody> </table>		mm	INCH	4 PLACES	± .13	± .005	3 PLACES	± .075	± .003	2 PLACES	± 0.13	± .01	1 PLACE	± 0.25	± .01	<table border="1"> <thead> <tr> <th colspan="2">DIMENSION STYLE</th> </tr> <tr> <th>IN/MM</th> <th>DATE</th> </tr> </thead> <tbody> <tr> <td>IN/MM</td> <td>2005/04/07</td> </tr> </tbody> </table>	DIMENSION STYLE		IN/MM	DATE	IN/MM	2005/04/07	TITLE <b>1X4 SFP CAGE ASSEMBLY,                  FRAME W/ TABS,                  W/ 0.090 OD GASKET</b>	
			mm	INCH																						
		4 PLACES	± .13	± .005																						
3 PLACES	± .075	± .003																								
2 PLACES	± 0.13	± .01																								
1 PLACE	± 0.25	± .01																								
DIMENSION STYLE																										
IN/MM	DATE																									
IN/MM	2005/04/07																									
DRAFT WHERE APPLICABLE MUST REMAIN WITHIN DIMENSIONS	APPROVED BY BRUSSELL	DATE 2005/04/07	MATERIAL NO. 747280417	DOCUMENT NO. SD-74728-417	SHEET NO. 4 OF 4																					
THIS DRAWING CONTAINS INFORMATION THAT IS PROPRIETARY TO MOLEX INCORPORATED AND SHOULD NOT BE USED WITHOUT WRITTEN PERMISSION																										

19 | 18 | 17 | 16 | 15 | 14 | 13 | 12 | 11 | 10 | 9 | 8 | 7 | 6 | 5 | 4 | 3 | 2 | 1