



**ANATECH ELECTRONICS INC**  
RF & Microwave Filters & Products

## 4000 MHz LC Band Pass Filter

**Part Number: AE4000B6454**



### Electrical Specifications

**Center Frequency:** 4000 MHz  
**Bandwidth:** 400 MHz  
**Passband:** 3800 MHz to 4200 MHz  
**VSWR:** 1.5:1  
**Insertion Loss:** 1 dB Max. @ 3800-4200 MHz  
**Rejection1:** 60 dB Min. @ 3000 MHz  
**Rejection2:** 30 dB Min. @ 3500 MHz  
**Rejection3:** 30 dB Min. @ 4500 MHz  
**Rejection4:** 60 dB Min. @ 5000 MHz  
**Impedance:** 50 Ohms

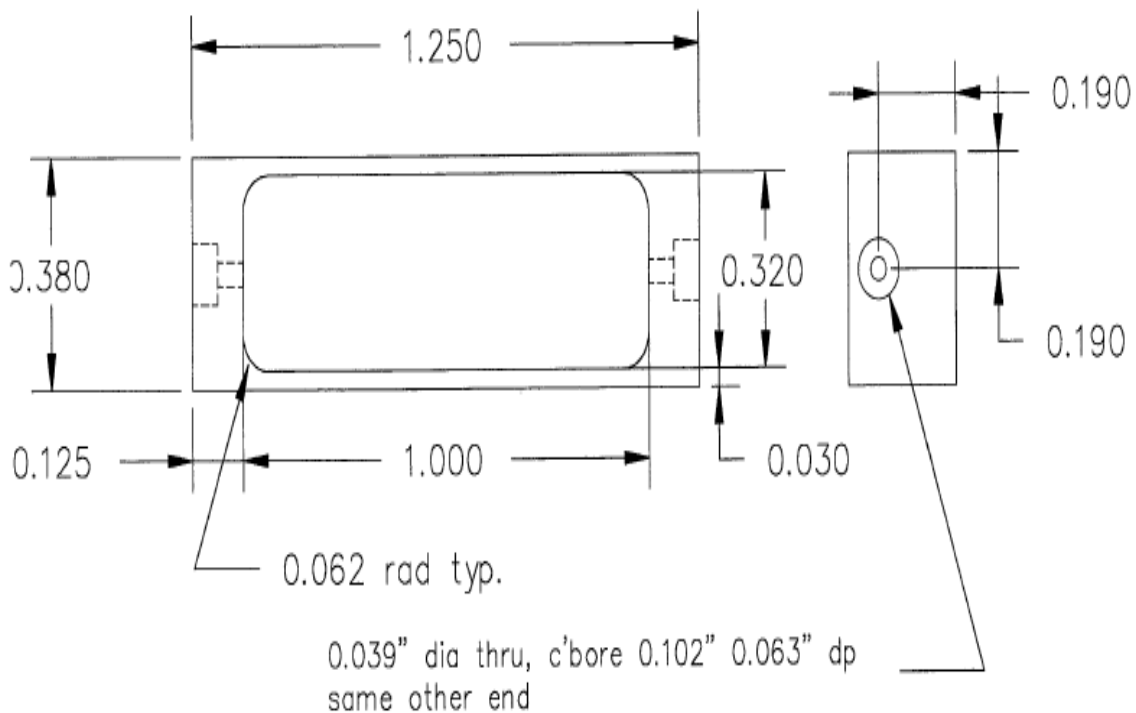
### Mechanical

**Connector Type:** Drop-in  
**Dimensions:** 1.25" X 0.38" x 0.38"

### Environmental

**Operating Temperature:** -25°C to +70°C  
**Storage Temperature:** -40°C to +90°C  
**Shock:** 10 G. 11ms  
**Vibration:** 10 G. 5 to 200Hz

### Outline Drawing:



Tolerance: +/-0.01 inches [+/-0.3mm]

Angles: +/-1 Deg.

\*Tolerance as shown unless otherwise specified in the datasheet electrical specification tables above.

\*When max dimensions are called out the above tolerances do not apply as long as it is under the max call out.

**70 Outwater Lane Phone: (973) 772-4242**  
**Garfield, NJ 07026 Fax : (973) 321-3941**

**Email: [sales@anatechelectronics.com](mailto:sales@anatechelectronics.com)**  
**Web: [www.anatechelectronics.com](http://www.anatechelectronics.com)**



**ANATECH ELECTRONICS INC**  
RF & Microwave Filters & Products

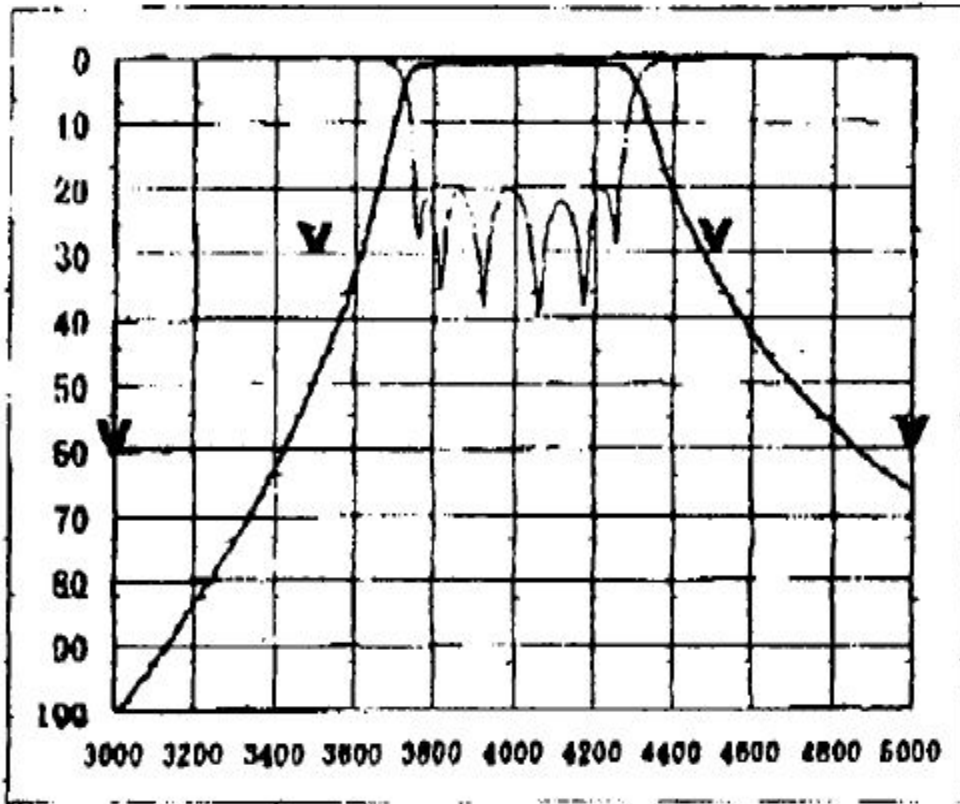
# 4000 MHz LC Bandpass Filter

Part Number: AE4000B6454



## Simulation Plot:

| Freq. (MHz) | ATT (dB) | SPEC  | Flatness |
|-------------|----------|-------|----------|
| 3000        | >60      | 60    |          |
| 3500        | 49.76    | 30    |          |
| 3800        | 0.94     | (0.5) | 0.28     |
| 4000        | 0.72     | 1     | 0.00     |
| 4200        | 0.85     | (0.5) | 0.13     |
| 4500        | 33.31    | 30    |          |
| 5000        | 66.37    | 60    |          |



Note: This is a simulation Plot. Actual response plot might differ once product is manufactured.