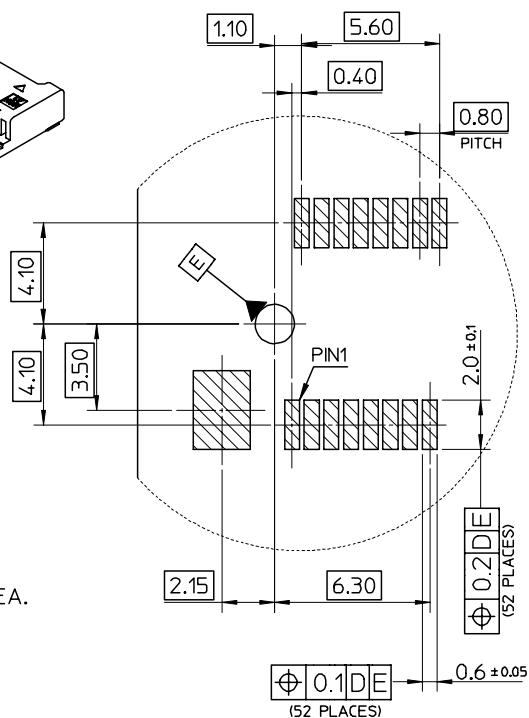
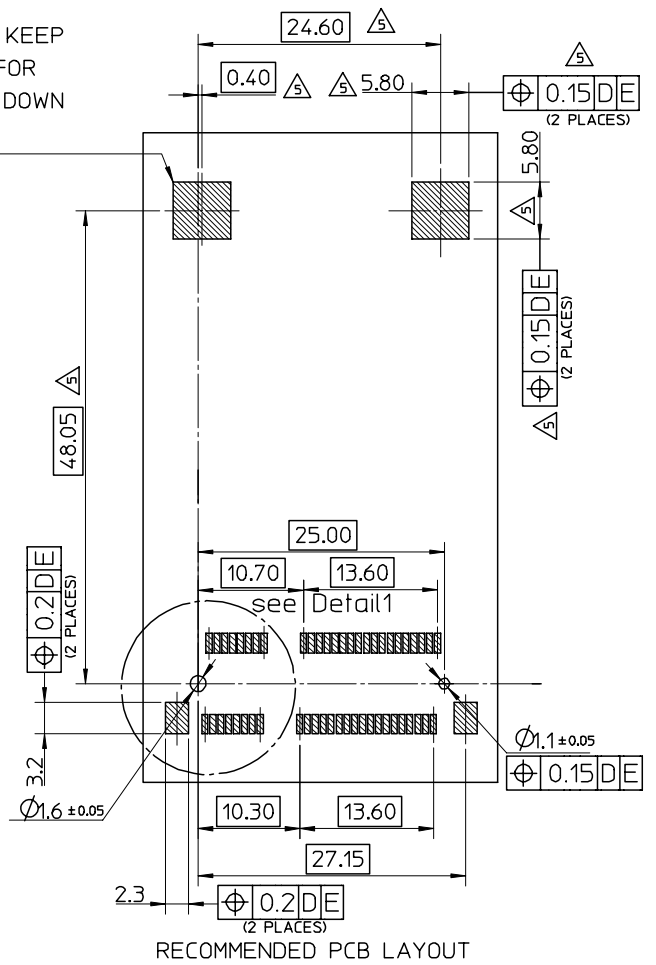


NOTES:

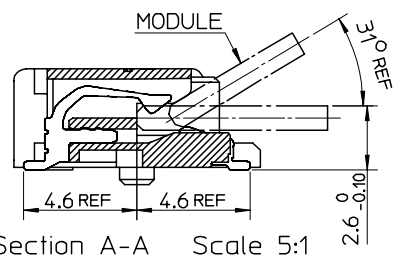
- MATERIALS:  
HOUSING:LCP,COLOR:BLACK, UL94V-0.  
CONTACT: PHOSPHOR BRONZE NAIL:BRASS
- FINISH  
CONTACT:SELECTIVE GOLD IN CONTACT AND SOLDER AREA.  
UNDERPLATED:NICKEL OVERALL  
NAIL:TIN IN SOLDER AREA.  
UNDERPLATED:NICKEL OVERALL.
- THE MODULE CARD REFERENCE MINI PCI EXPRESS CARD  
ELECTROMECHANICAL SPECIFICATION.
- DATUM D IS THE TOP SURFACE OF PCB.
- IF THE CONNECTOR USED WITH 48099-00\*\*,LATCH SIDE  
RECOMMENDED PCB LAYOUT REFERS TO SD-48099-0\*\*.
- PART 67910\*\*\*\* COMPLIANT TO ROHS DIRECTIVE 2002/95/EC  
AND ELV DIRECTIVE 2000/53/EC.



COMPONENT KEEP OUT AREA FOR CARD HOLD DOWN SOLUTION



679100002	10 MICROINCH GOLD
679101002	GOLD FLASH



RELEASED EC NO: SH2007-0020 DRWN:DHU 2006/08/02 CHKD:HARVEY 2006/08/02 APPR: JNCHEN 2006/08/09	QUALITY SYMBOLS ▽=0 ▽=0	GENERAL TOLERANCES (UNLESS SPECIFIED)		DIMENSION STYLE MM ONLY		SCALE 2:1	DESIGN UNITS METRIC	THIRD ANGLE PROJECTION	
		4 PLACES ± --- ± --- 3 PLACES ± --- ± --- 2 PLACES ± 0.25 ± --- 1 PLACE ± 0.25 ± --- ANGULAR ± 3°	mm INCH	DRAWN BY J. CHIANG 2003/02/25	DATE 2003/02/25	TITLE MINI PCI EXPRESS CONN. 0.8 MM PITCH 52CIRCUIT 4.0MM H			
DRAFT WHERE APPLICABLE MUST REMAIN WITHIN DIMENSIONS		SEE TABLE		APPROVED BY L. ERICK 2003/03/06		MOLEX INCORPORATED		SHEET NO. 1 OF 2	
MATERIAL NO.		DOCUMENT NO. SD-67910-001		THIS DRAWING CONTAINS INFORMATION THAT IS PROPRIETARY TO MOLEX INCORPORATED AND SHOULD NOT BE USED WITHOUT WRITTEN PERMISSION					

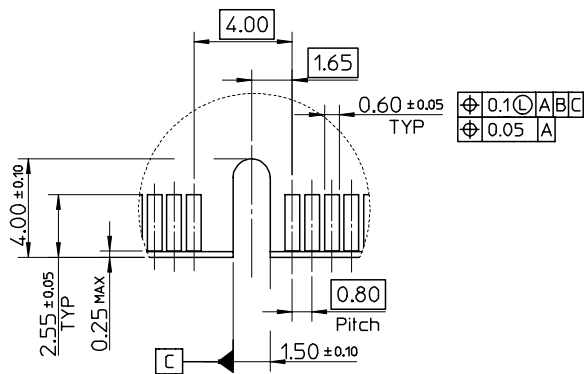
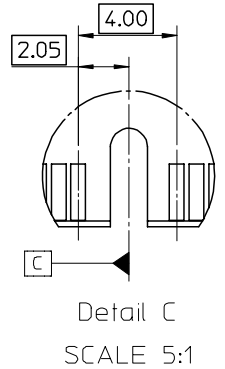
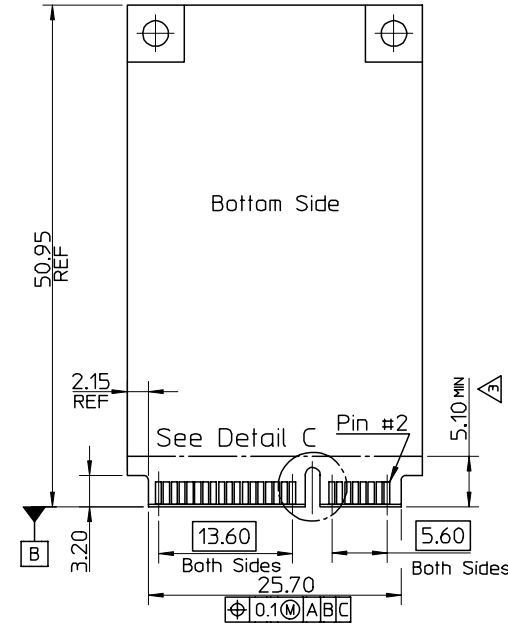
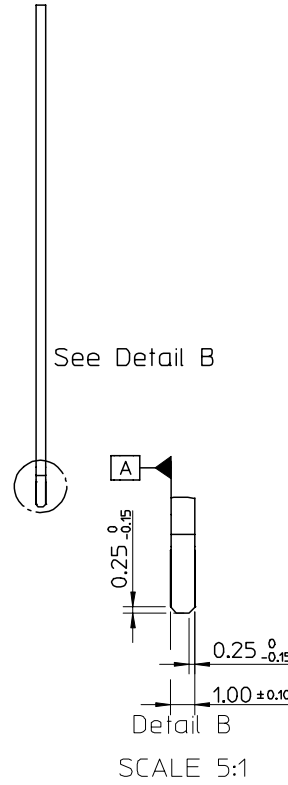
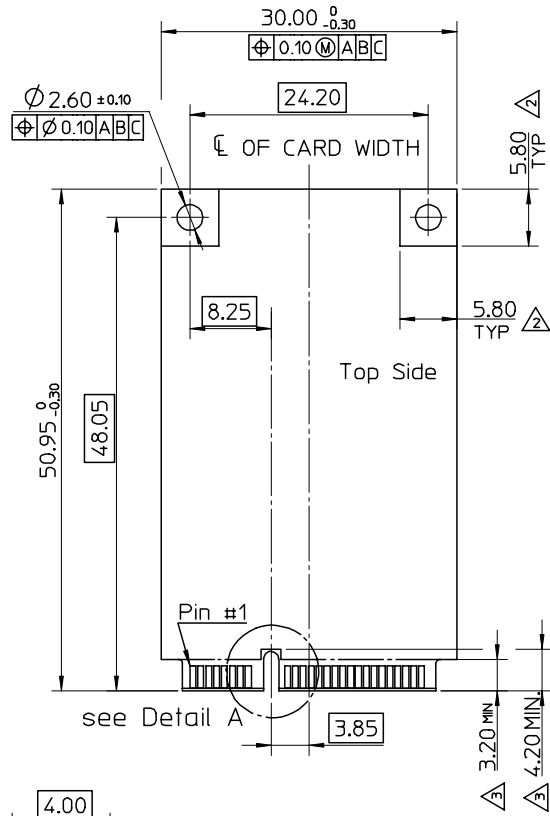
10 9 8 7 6 5 4 3 2 1

NOTES;

1. PIN NUMBERING REFERENCE:

ODD PINS - TOP SIDE  
EVEN PINS - BOTTOM SIDE

- △ COMPONENT AND ROUTING (ALL LAYERS)  
KEEP OUT AREA FOR HOLD DOWN SOLUTIONS.
- △ COMPONENT KEEP OUT AREA FOR CONNECTOR.



Detail A  
Scale 5:1

RELEASED EC NO: SH2007-0020 2006/08/02 DRWN:DHU CHKD:HARVEY 2006/08/02 APPR: JNCHEM 2006/08/09	QUALITY SYMBOLS ▽=0 △=0	GENERAL TOLERANCES (UNLESS SPECIFIED)		DIMENSION STYLE MM ONLY	SCALE 1:1	DESIGN UNITS METRIC	THIRD ANGLE PROJECTION
		4 PLACES ± --- ± ---	3 PLACES ± --- ± ---	2 PLACES ± 0.25 ± ---	1 PLACE ± 0.25 ± ---	ANGULAR ± 3 °	DRAWN BY J. CHIANG 2003/02/25
REV C	DESCRIPTION	DRAFT WHERE APPLICABLE MUST REMAIN WITHIN DIMENSIONS		SEE TABLE	MOLEX INCORPORATED		SHEET NO. 2 OF 2
		MATERIAL NO.		DOCUMENT NO. SD-67910-001	MATERIAL NO.		

9 8 7 6 5 4 3 2 1