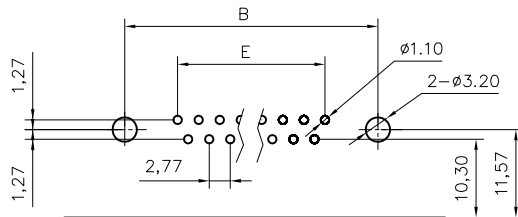
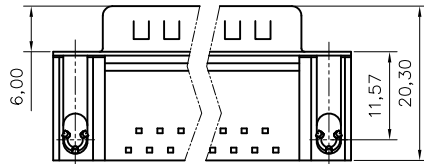
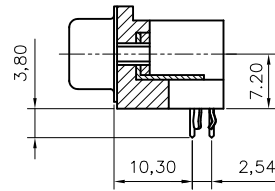
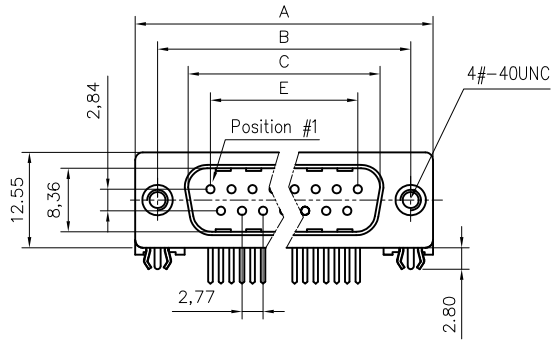


This document is the property of Amphenol Corporation and is delivered on the express condition that it is not to be disclosed, reproduced or used, in whole or in part, for manufacture or sale by anyone other than Amphenol Corporation without its prior consent, & that no right is granted to disclose or to use any information in this document.



P.C.B EDGE
RECOMMENDED P.C.B LAYOUT
 (TOLERANCE +/-0.03)



Customer drawing for proposal

Nb of contacts	Dimensions			
	A	B	C	E
9	30.89	24.99	16.92	11.08
15	39.10	33.32	25.25	19.39
25	53.09	47.04	38.96	33.24
37	69.40	63.50	55.42	49.86

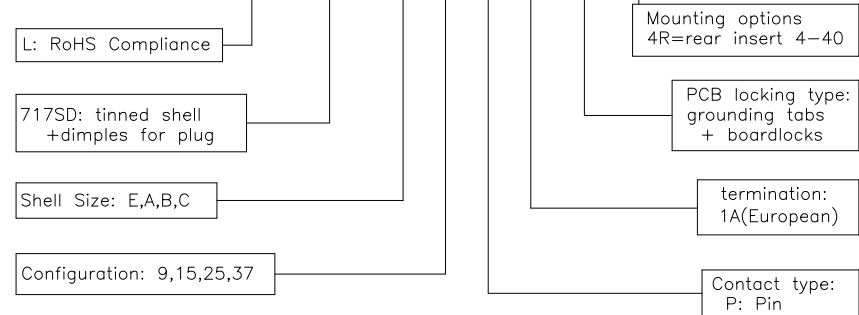
REVISIONS				
SYM	ECN	DESCRIPTION	DATE	APPROVED
2		Modify "F" dimension	Aug/21/11	
3		Update drawing	Apr/28/12	Tony

D-SUB TECHNICAL DATA

SHELL : Steel, 2.5um(100u") min tin over 1.25um(50u") min nickel
 BODY : Glass filled thermoplastic.
 Flame retardant to UL94 V-0, Color Black
 CONTACTS : Brass
 gold flash over 1.25um(50u") min nickel on mating area
 2.54um(100u") min tin over 1.25um(50u") min nickel on termination area
 REAR INSERT : Brass, 50u" min nickel
 BOARDLOCK : Brass, 100u" min tin over 50u" min nickel
 ELECTRICAL : Voltage rating: 250 V RMS at 50 Hz
 Current rating: 3A per contact
 Withstanding Voltage >1000 V RMS at 50 Hz for one minute
 Insulation resistance >5000 M Ohms
 Contact resistance 25 mOhms max
 CLIMATIC : Temperature range -55 °C up to 85°C
 MARKING : Amphenol...(Series No.)
 Manufacturing date
 Commercial reference

PRODUCT CODE

L 717SD X XX P 1A CH 4R



UNLESS OTHERWISE SPECIFIED TOLERANCES		APPROVAL	DATE
U.S.	METRIC	DRAWN	DATE
.X +/-	0.50	Mary.ma	Apr/28/12
.XX +/-	0.30	CHECKED	Tony.tang
.XXX +/-	0.20	CHECKED	Apr/28/12
FRACTIONS			
ANGLES +/-	5°		
FOR MATERIALS AND FINISHES - SEE NOTES		DRAWING FILE :	
REMOVE SHARP EDGES		ANGLE OF PROJECTION	
DIMENSIONS			
U.S.	INCHES		
METRIC	MM		

Amphenol Amphenol East Asia Limited		
TITLE		
D-SUB contacts , SD series		
SIZE	DRAWING NO.	REV.
A4	C L717SDXXXP1ACH4R	3
SCALE	NONE	SHEET 1 OF 1