

The ZTB 455E ceramic resonator offers low frequency 455 KHz and extended temp range.

ZTB455E

455 KHz
Ceramic resonator



- Low Frequency Resonator
- RoHS Compliant (Note 7 exemption)
- Extended temp range

OPERATING CONDITIONS / ELECTRICAL CHARACTERISTICS

| PARAMETERS | CONDITIONS | ZTB455E | | | UNITS |
|-----------------------|------------------|---------|-------|------|-------|
| | | MIN | TYP | MAX | |
| Frequency | | | 455.0 | | KHz |
| Frequency Tolerance | @ +25°C | | | ± 2 | KHz |
| Frequency Stability | -20 ~ +80°C | | | ±0.3 | % |
| Aging | 10 Years | | | ±0.5 | % |
| ESR | | | | 20 | Ohms |
| C1 | | | 100 | | pF |
| C2 | | | 100 | | pF |
| Operating Temperature | T _{opr} | -20 | | +80 | °C |
| Storage Temperature | T _{stg} | -20 | | +85 | °C |

Not for new designs

DIMENSIONS (mm)

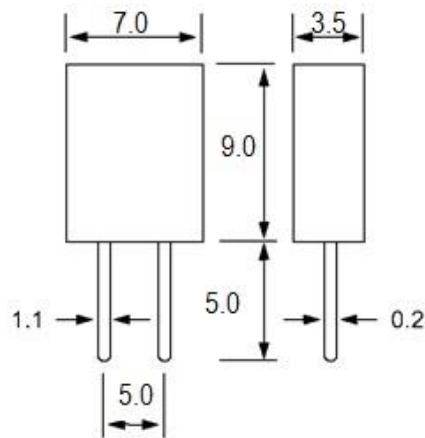


Figure 1) Top, and Side Views

ZTB PCN

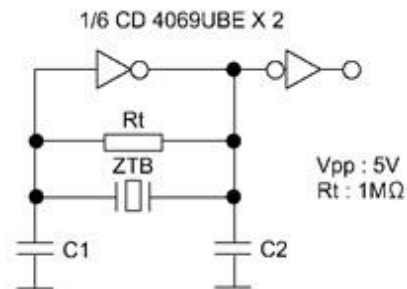


Figure 2) Test Circuit

PART NUMBER: ZTB455E



ZTB455E
455 KHz
Ceramic Resonator



| SOLDER PROFILE |
|--|
| Peak solder Temp +230°C Max 5 sec Max. |
| Not compatible with reflow solder |
| MSL 1 |