

| ATLANTIC VERSION TERMINATOR INTERFACE ADAPTER | PART NUMBER | REVISION | DESCRIPTION | FEED TYPE | APPLICATOR STYLE CONVERSION CHART | | | | | | |
|---|-------------|----------|--------------------------|-------------------|-----------------------------------|-----------------------|-----------|-------------|-----------|------------------------|-----------|
| | | | | | CONVERT TO | PART NUMBERS REQUIRED | | | | | |
| | 2150315-1 | B | FINE CRIMP HEIGHT ADJUST | MECHANICAL | PNEUMATIC FEED | 2119950-1 | 2119792-2 | - | 2119641-1 | - | 2063440-1 |
| | | | | | SERVO LATCH PLATE | 2119951-1 | 1901697-1 | 8-2150315-5 | - | 2168400-7 (QUANTITY 2) | |
| | | | | | SMART APPLICATOR | 2161326-1 | - | 8-2150315-4 | - | - | |
| | 2150315-2 | B | FINE CRIMP HEIGHT ADJUST | PNEUMATIC | MECHANICAL FEED | 2119949-1 | 2063961-1 | 5-18022-5 | 2119653-1 | - | - |
| | | | | | SERVO LATCH PLATE | 2119951-1 | 1901697-1 | 8-2150315-5 | - | 2168400-7 (QUANTITY 2) | |
| | | | | | SMART APPLICATOR | 2161326-1 | - | 8-2150315-4 | - | - | |
| | 2150315-5 | B | FINE CRIMP HEIGHT ADJUST | SERVO LATCH PLATE | MECHANICAL FEED | 2119949-1 | 2063961-1 | 5-18022-5 | 2119653-1 | - | - |
| | | | | | PNEUMATIC FEED | 2119950-1 | 2119792-2 | - | 2119641-1 | - | 2063440-1 |
| | 2150315-6 | B | NON-CRIMP HEIGHT ADJUST | SERVO LATCH PLATE | - | - | - | - | - | - | - |
| | | | | | - | - | - | - | - | - | - |
| | 2150315-7 | B | FINE CRIMP HEIGHT ADJUST | NONE | - | - | - | - | - | - | - |
| | 7-2150315-7 | A | CRIMP TOOLING KIT | - | - | - | - | - | - | - | - |

| APPLICATOR DATA | | |
|-----------------------------|----------------|------|
| CRIMP | SIZE | TYPE |
| WIRE | 2.79 mm [.110] | F |
| INSUL | 4.01 mm [.158] | F |
| APPL INSTRUCTIONS 408-10390 | | |

| TERMINAL DATA: G&H TERMINAL LEAR CRIMP SPECIFICATION | | | |
|--|---------------|------------------------------|---------------|
| TERMINAL NAME: RECEPTACLE 6, 3x0, 8 | | | |
| WIRE STRIP LENGTH | | INSULATION DIAMETER RANGE | |
| 5.50-6.00 mm [.217-.236 IN] | | Ø2.20-3.00 mm [.087-.118 IN] | |
| TERMINAL APPLICATION SPECIFICATION | 25985 Rev 2 | - | - |
| TERMINALS APPLIED | | | |
| TE TERMINAL | G&H TERMINAL | TE TERMINAL | G&H TERMINAL |
| 1572845-1 | 25914.201.011 | 1572845-7 | 25985.123.211 |
| 1572845-2 | 25914.201.004 | 1572845-8 | 25985.123.204 |
| 1572845-3 | 25914.123.211 | 1572845-9 | 25985.123.242 |
| 1572845-4 | 25914.123.204 | 1-1572845-0 | 25985.201.042 |
| 1572845-5 | 25985.201.011 | 1-1572845-1 | 25914.123.242 |
| 1572845-6 | 25985.201.004 | 1-1572845-2 | 25914.201.042 |

| WIRE SIZE | CRIMP HEIGHT mm [INCH] | CRIMP HEIGHT REFERENCE SETTING |
|-----------|----------------------------|--------------------------------|
| 1.00+1.50 | 1.95+/-0.05 [.077+/-0.002] | 6.4 |
| 2.50 | 1.90+/-0.05 [.075+/-0.002] | 7.3 |
| 2x1.00 | 1.80+/-0.05 [.071+/-0.002] | 8.3 |
| 0.50+1.50 | 1.80+/-0.05 [.071+/-0.002] | 8.3 |
| 2.00 | 1.80+/-0.05 [.071+/-0.002] | 8.3 |
| 0.50+1.00 | 1.65+/-0.05 [.065+/-0.002] | 9.8 |
| 1.50 | 1.65+/-0.05 [.065+/-0.002] | 9.8 |

- 1 RECOMMENDED SPARE PARTS
- 2 GREASE BEARING SURFACES LIGHTLY
- 3. LUBRICATE DAILY PER THE APPLICATOR INSTRUCTION SHEET SUPPLIED WITH THE APPLICATOR.
- 4 APPLICATOR SPECIFIC DATA TO BE ENTERED INTO BLANK MEMORY CHIP AT ASSEMBLY. SEE BELOW FOR PART NUMBER:
 - MECHANICAL FEED WITH "SMART APPLICATOR" CONVERSION: 8-2150315-4
 - PNEUMATIC FEED WITH "SMART APPLICATOR" CONVERSION: 8-2150315-4
 - SERVO FEED WITH "FINE CRIMP HEIGHT ADJUST": 8-2150315-5
 - SERVO FEED WITH "NON-CRIMP HEIGHT ADJUST": 8-2150315-6
- 5. ADJUSTMENT OF THE STRIPPER MAY BE REQUIRED WHEN MOVING THE APPLICATOR BETWEEN BENCH AND LEADMAKER APPLICATIONS.
- 6 APPLY PART NUMBER 1-23419-5 LOCTITE TO THREADS OF ITEM 50 & 62. APPLY PART NUMBER 2-23419-6 LOCTITE TO THREADS OF ITEM 242. FOR -6 ONLY APPLY PART NUMBER 1-23419-5 LOCTITE TO THREADS OF ITEM 37.
- 7 GREASE THREADS, GROOVE AND O-RING ON ITEMS 35 & 252.
- 8 MAGNET, ITEM 166 MUST BE ORIENTED CORRECTLY IN ORDER TO PROPERLY ACTUATE THE COUNTER.
- 9 CRIMP HEIGHT REFERENCE SETTING WAS THE SETTING USED WHEN THE APPLICATOR WAS QUALIFIED AT THE FACTORY. ADJUSTMENT MAY BE NECESSARY WHEN RUNNING APPLICATOR IN THE FIELD.
- 10 SPARE FEED CAM STORAGE LOCATION REFER TO INSTRUCTION SHEET FOR ADDITIONAL INFORMATION.
- 11 THE RECOMMENDED SET-UP FOR END FEED APPLICATORS IS POST-FEED WITH ITEM 2119653-1. THE APPLICATOR CAN BE CONFIGURED FOR PRE-FEED WITH ITEM 2119652-1 BUT MAY ENCOUNTER PROBLEMS WITH SOME APPLICATIONS. FEED ISSUES OR TERMINAL JAMMING MAY OCCUR IN THE PRE-FEED CONFIGURATION.
- 12 WHEN ASSEMBLING -6 NON-CRIMP HEIGHT ADJUST APPLICATOR USE SHIM PACK 2119957-2 TO ALIGN APPLICATOR'S MAXIMUM WIRE CRIMP HEIGHT AT NORMAL TERMINATOR SHUT HEIGHT

| TERMINAL DATA: G&H TERMINAL TE CRIMP SPECIFICATION | | | |
|--|---------------|------------------------------|---------------|
| TERMINAL NAME: RECEPTACLE 6, 3x0, 8 | | | |
| WIRE STRIP LENGTH | | INSULATION DIAMETER RANGE | |
| 5.50-6.00 mm [.217-.236 IN] | | Ø2.20-3.00 mm [.087-.118 IN] | |
| TERMINAL APPLICATION SPECIFICATION | NONE | - | - |
| TERMINALS APPLIED | | | |
| TE TERMINAL | G&H TERMINAL | TE TERMINAL | G&H TERMINAL |
| 1572845-1 | 25914.201.011 | 1572845-7 | 25985.123.211 |
| 1572845-2 | 25914.201.004 | 1572845-8 | 25985.123.204 |
| 1572845-3 | 25914.123.211 | 1572845-9 | 25985.123.242 |
| 1572845-4 | 25914.123.204 | 1-1572845-0 | 25985.201.042 |
| 1572845-5 | 25985.201.011 | 1-1572845-1 | 25914.123.242 |
| 1572845-6 | 25985.201.004 | 1-1572845-2 | 25914.201.042 |

| WIRE SIZE | CRIMP HEIGHT mm [INCH] | CRIMP HEIGHT REFERENCE SETTING |
|-----------|----------------------------|--------------------------------|
| 2X16 | 1.90+/-0.05 [.075+/-0.002] | 6.8 |
| 1-14 | 1.75+/-0.05 [.069+/-0.002] | 8.7 |
| 2X18 | 1.75+/-0.05 [.069+/-0.002] | 8.7 |
| 1-16 | 1.55+/-0.05 [.061+/-0.002] | 10.6 |
| 1-18 | 1.48+/-0.05 [.058+/-0.002] | 11.2 |

***WARNING**
ON INSTALLATION, SET WIRE DISC, ITEM 40 TO LARGEST WIRE SIZE SETTING. USE OF SETTINGS BELOW MINIMUM REQUIRED CRIMP HEIGHT SETTING WILL CAUSE DAMAGE TO CRIMP TOOLING.

| | | | | | | | | |
|-----|----|----|----|----|----|-----------|--------------------------------------|---------|
| - | - | 1 | - | - | - | 2119957-2 | APPLICATOR SHIM PACK | 260 |
| - | 1 | - | 1 | 1 | 1 | 8-21084-0 | O-RING, .676 ID, .070 DIA. MAT. | 252 |
| - | - | - | - | 1 | - | 2119640-1 | PUSH ROD, AIR FEED | 250 |
| - | - | - | - | 1 | - | 2079988-1 | BUSHING, LCH5-12, MISUMI | 249 |
| - | - | - | - | 1 | - | 2119641-1 | FEED CAM, AIR FEED | 248 |
| - | 1 | - | 1 | 1 | 1 | 2119798-1 | DETENT PIN | 247 |
| - | 1 | - | 1 | 1 | 1 | 1-22279-3 | SPRING, COMPRESSION | 246 |
| - | - | 1 | - | - | - | 2119759-1 | RAM, AMP STYLE, END FEED, NON-ADJUST | 245 |
| -77 | -7 | -6 | -5 | -2 | -1 | PART NO | DESCRIPTION | ITEM NO |

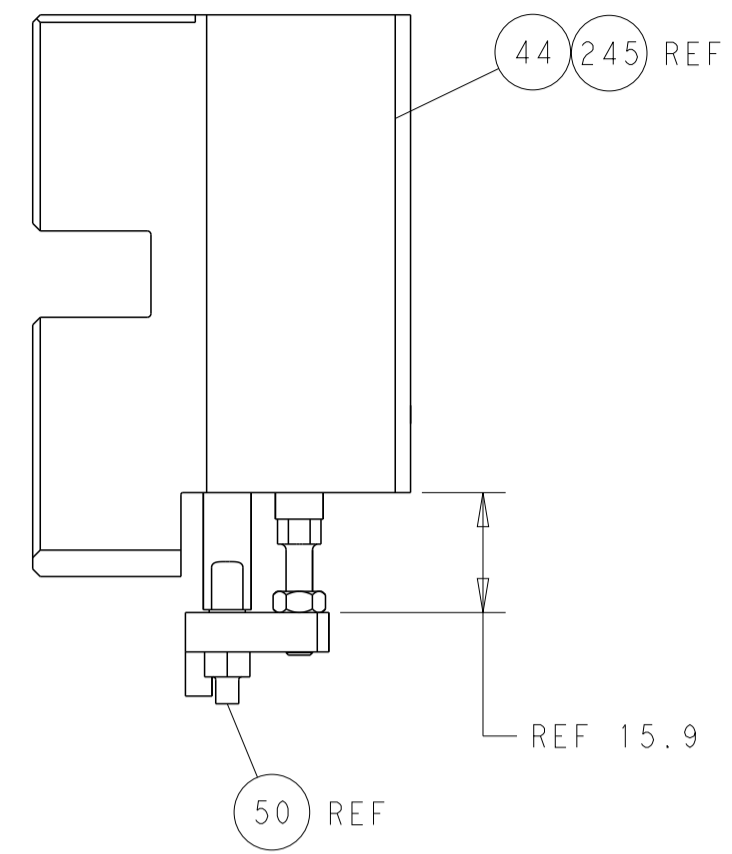
ATLANTIC VERSION
Shown on sheets 1 of 4 & 2 of 4
(Pacific version shown on sheets 3 of 4 & 4 of 4)

| SET UP GAUGE | LOC | DIST | REVISIONS | | | | | |
|--------------|-----|------|-----------|-----|---------------|-----------|-----|------|
| 2119599-2 | A | 66 | P | LTN | DESCRIPTION | DATE | OWN | APVD |
| | | | B | | ECR-19-001356 | 25JAN2019 | RK | GB |

| | | | | | | | | |
|-----|--------|--------|--------|--------|--------|-------------|-------------------------------------|---------|
| - | 1 | 1 | 1 | 1 | 1 | 2119082-9 | CAM, SNAIL, INSULATION ADJUSTMENT | 244 |
| - | 1 | 1 | 1 | 1 | 1 | 2079764-1 | WASHER, WAVE SPRING, CREST-TO-CREST | 243 |
| - | 1 | 1 | 1 | 1 | 1 | 2119083-1 | RETAINER, INSULATION DIAL | 242 |
| - | - | 2 | 2 | - | - | 2168400-7 | SHCS, LOW HEAD, RoHS, M5 X 10 | 240 |
| - | - | - | - | - | 1 | 2119580-1 | MECHANICAL FEED ASSEMBLY | 239 |
| - | - | - | - | 1 | - | 2063440-1 | AIR FEED MODULE | 238 |
| - | - | 1 | 1 | - | - | 2119740-2 | TAG, IDENTIFICATION | 213 |
| - | - | REFREF | - | - | - | 1901697-1 | FEED FINGER ASSEMBLY, EF | 183 |
| - | 1 | 1 | 1 | 1 | 1 | 6-993111-6 | PIN, SLOTTED SPRING 3.0 X 14.0 | 177 |
| - | 1 | 1 | 1 | 1 | 1 | 8-22280-7 | SPRING, COMPRESSION | 176 |
| - | 1 | 1 | 1 | 1 | 1 | 1752353-2 | GUIDE PIN, HOLDDOWN | 175 |
| - | 1 | 1 | 1 | 1 | 1 | 1901680-2 | GUIDE PIN, HOLDDOWN | 174 |
| - | - | - | - | 2 | - | 21045-3 | RING, RETAIN, EXTERN, 3/16 CRESCENT | 172 |
| - | 1 | 1 | 1 | 1 | 1 | 994969-1 | MAGNET, RARE EARTH HIGH ENERGY | 166 |
| - | REFREF | REFREF | REFREF | REFREF | REFREF | 994970-2 | COUNTER, MAGNETIC | 164 |
| - | - | - | - | 1 | - | 240638-1 | SPRING, FEED FINGER | 163 |
| - | - | - | - | 1 | - | 3-23627-7 | PIN, RETAIN, GRVD, 3/16 X .854 | 137 |
| - | - | REFREF | - | - | - | SEE NOTE 4 | MEMORY CHIP, PROGRAMMED | 135 |
| - | - | 1 | 1 | - | - | 1633743-1 | SERVO FEED LATCH ASM | 133 |
| - | 1 | 1 | 1 | 1 | 1 | 455888-5 | SPACER, CRIMPER | 82 |
| - | 1 | 1 | 1 | 1 | 1 | 2119956-2 | DOCUMENTATION PACKAGE | 71 |
| - | 2 | 2 | 2 | 2 | 2 | 2-18032-2 | SCR, SET, FLT PNT, M3 X 10.0 | 70 |
| - | 1 | - | - | 1 | 1 | 2119740-1 | TAG, IDENTIFICATION | 67 |
| - | 2 | 2 | 2 | 2 | 2 | 2168078-1 | SCREW, DRIVE, RH, RoHS, 2 x .188 | 66 |
| - | 1 | 1 | 1 | 1 | 1 | 1901681-1 | HOLDDOWN, TERMINAL | 65 |
| - | 2 | 2 | 2 | 2 | 2 | 2168400-5 | SHCS, LOW HEAD, RoHS, M4 X 20 | 64 |
| - | 1 | - | 1 | 1 | 1 | 2119793-1 | LIMITER, ADJUSTMENT BOLT | 63 |
| - | 3 | - | 3 | 3 | 3 | 992763-5 | SCR, SET, SOC, CONE PNT, M3 X 4.0 | 62 |
| - | 1 | 1 | 1 | 1 | 1 | 2079383-4 | SCR, BHSC, RoHS (M4 X 8) | 60 |
| - | - | - | - | - | 1 | 5-18022-5 | SCR, HEX HD CAP, M4 X 6.0 | 59 |
| - | - | - | - | - | 1 | 2063961-1 | FEED FINGER | 58 |
| - | 3 | 3 | 3 | 3 | 3 | 2168400-4 | SHCS, LOW HEAD, RoHS, M4 X 8 | 57 |
| - | 2 | 2 | 2 | 2 | 2 | 2168083-3 | SCR, SKT HD CAP, RoHS, M4 X 12.0 | 56 |
| - | 2 | 2 | 2 | 2 | 2 | 5018030-2 | NUT, HEX, REG, RoHS, M4 | 55 |
| - | 2 | 2 | 2 | 2 | 2 | 5018030-1 | NUT, HEX, REG, RoHS, M3 | 54 |
| - | 2 | 2 | 2 | 2 | 2 | 986965-8 | NUT, LOCK, HEX, TORQUE (M4) | 53 |
| - | 1 | 1 | 1 | 1 | 1 | 1-5018030-0 | NUT, HEX, REG, RoHS, M3.5 | 52 |
| - | - | - | - | 1 | - | 2119792-2 | PAWL, EF, AIR | 51 |
| - | 1 | 1 | 1 | 1 | 1 | 1-1976055-2 | STANDOFF, HOLD-DOWN | 50 |
| - | - | - | - | 1 | 2 | 18023-9 | SCR, SKT HD CAP M4 X 6.0 | 49 |
| - | - | - | - | - | 1 | 2119652-1 | FEED CAM, PRE FEED | 48 |
| - | - | - | - | - | 1 | 2119653-1 | FEED CAM, POST FEED | 47 |
| - | 1 | 1 | 1 | 1 | 1 | 2119655-5 | APPLICATOR BASIC ASSEMBLY, EF | 46 |
| - | 1 | - | 1 | 1 | 1 | 2119369-1 | RAM, AMP STYLE, END FEED | 44 |
| - | 1 | 1 | 1 | 1 | 1 | 2079383-7 | SCR, BHSC, RoHS (M8 X 25) | 41 |
| - | 1 | - | 1 | 1 | 1 | 2119645-1 | DISC, NUMBERED FA WIRE ADJUSTMENT | 40 |
| - | 1 | - | 1 | 1 | 1 | 2119957-1 | APPLICATOR SHIM PACK | 39 |
| - | 1 | 1 | 1 | 1 | 1 | 2119644-2 | RAM WASHER, PRECISION | 38 |
| - | 1 | 1 | 1 | 1 | 1 | 2119085-1 | FA HEAD, ATLANTIC STYLE | 37 |
| - | 1 | - | 1 | 1 | 1 | 2119092-1 | BOLT, ADJUSTMENT | 35 |
| - | 7 | 7 | 7 | 7 | 7 | 1-18028-2 | WASHER, FLAT, REG M4 | 33 |
| - | 2 | 2 | 2 | 2 | 2 | 2168083-9 | SCR, SKT HD CAP, RoHS, M4 X 20 | 31 |
| - | 2 | 2 | 2 | 2 | 2 | 1-2168083-0 | SCR, SKT HD CAP, RoHS, M4 X 10 | 29 |
| - | 1 | 1 | 1 | 1 | 1 | 240639-1 | STRIPPER (MACHINING) | 27 |
| - | 2 | 2 | 2 | 2 | 2 | 1320906-1 | STUD, THREADED | 25 |
| - | 1 | 1 | 1 | 1 | 1 | 1752371-3 | PLATE, STRIP GUIDE | 24 |
| - | 1 | 1 | 1 | 1 | 1 | 240825-3 | PLATE, STRIP HOLD DOWN | 23 |
| - | 2 | 2 | 2 | 2 | 2 | 2-22281-3 | SPRING, COMPRESSION | 22 |
| - | 1 | 1 | 1 | 1 | 1 | 1752373-4 | DRAG | 20 |
| - | 2 | 2 | 2 | 2 | 2 | 1901259-6 | GUIDE, LOWER STRIP | 18 |
| - | 4 | 4 | 4 | 4 | 4 | 1-2079383-1 | SCR, BHSC, RoHS (M6 X 12) | 17 |
| - | 1 | 1 | 1 | 1 | 1 | 1752360-1 | SPACER, HOLD-DOWN | 13 |
| - | 1 | 1 | 1 | 1 | 1 | 240833-4 | PLATE, REAR SHEAR | 11 |
| - | - | - | - | - | - | - | - | 10 |
| - | 1 | 1 | 1 | 1 | 1 | 690482-3 | PLATE, FRONT SHEAR | 9 |
| - | 1 | 1 | 1 | 1 | 1 | 1803060-3 | ANVIL, COMBINATION, END FEED | 8 |
| - | 1 | 1 | 1 | 1 | 1 | 1-2217206-3 | BLADE, SLUG | 7 |
| - | - | - | - | - | - | - | - | 6 |
| - | 1 | 1 | 1 | 1 | 1 | 3-240641-5 | SPACER | 5 |
| - | 1 | 1 | 1 | 1 | 1 | 238009-1 | BLOCK, FL CRIMPER SPACER | 4 |
| - | 1 | 1 | 1 | 1 | 1 | 4-2119582-8 | CRIMPER, INSULATION F PREMIUM | 3 |
| - | 1 | 1 | 1 | 1 | 1 | 455888-8 | SPACER, CRIMPER | 2 |
| - | 1 | 1 | 1 | 1 | 1 | 3-456408-0 | CRIMPER, WIRE PREMIUM | 1 |
| -77 | -7 | -6 | -5 | -2 | -1 | PART NO | DESCRIPTION | ITEM NO |

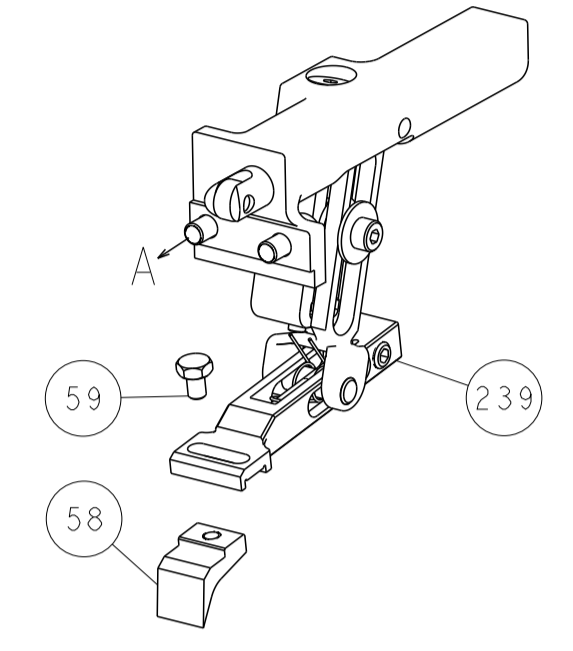
| DIMENSIONS: | | TOLERANCES | |
|-------------|--|------------|--|
|-------------|--|------------|--|

| LOC | DIST | REV | DESCRIPTION | DATE | OWN | APVD |
|-----|------|-----|-------------|------|-----|------|
| A | 66 | | SEE SHEET 1 | | | |

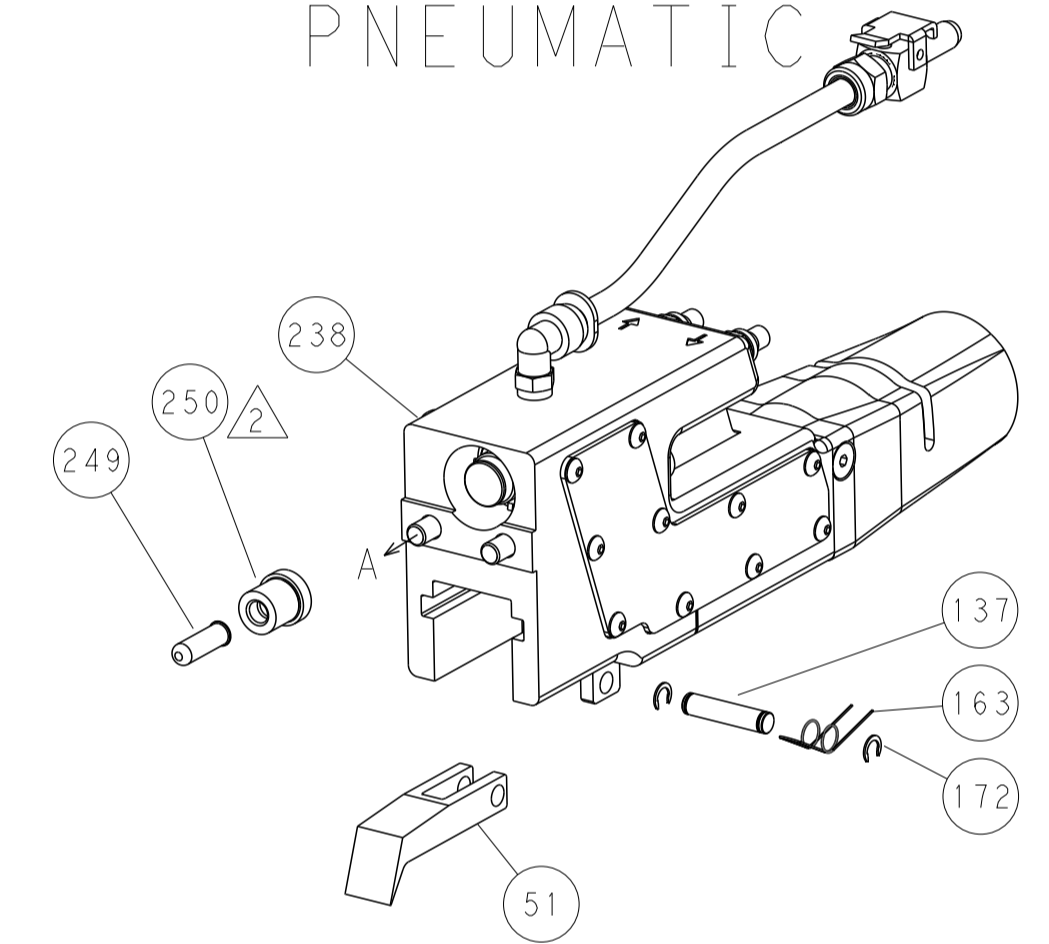


HOLDDOWN SET-UP

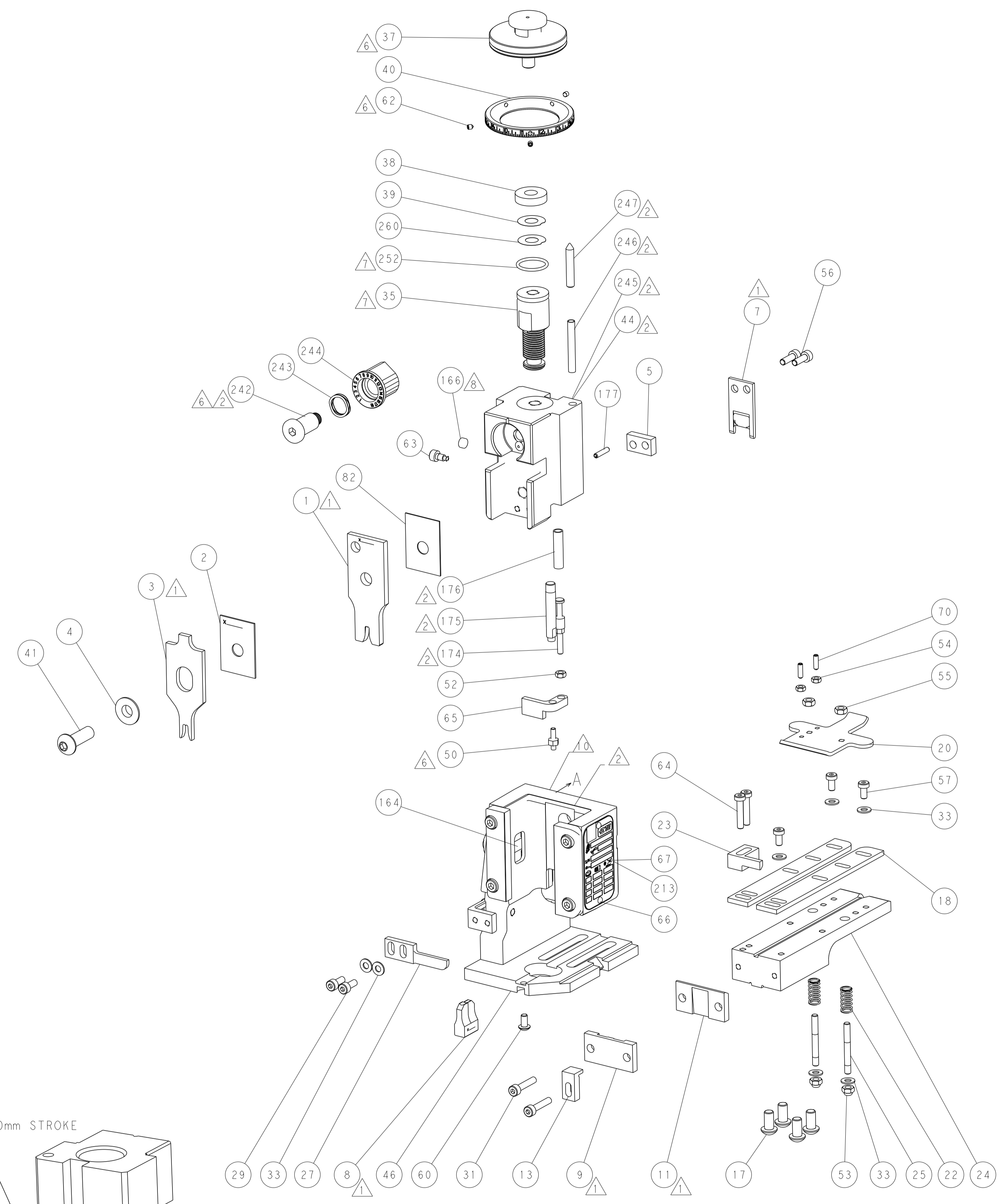
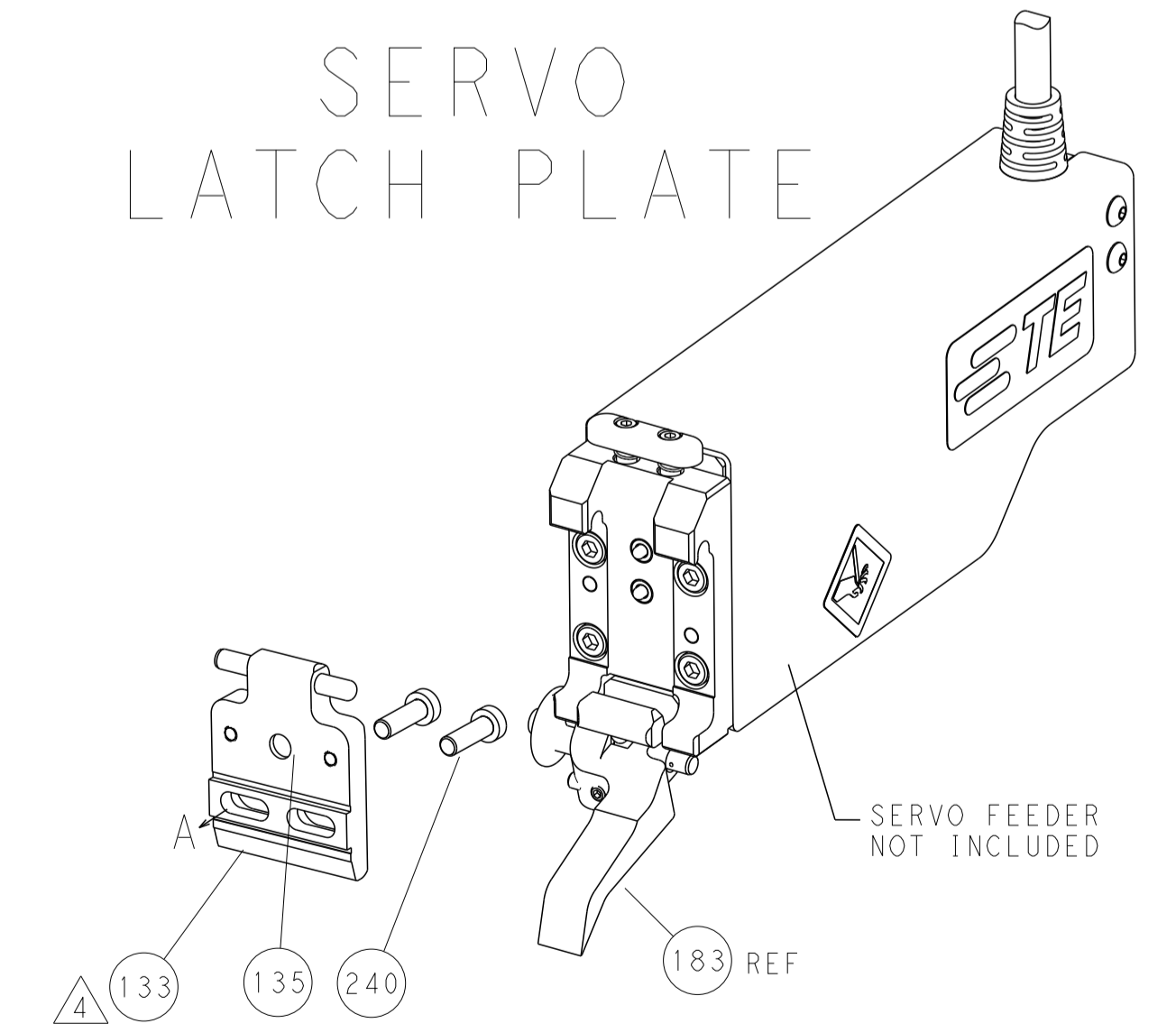
FEED TYPE
MECHANICAL



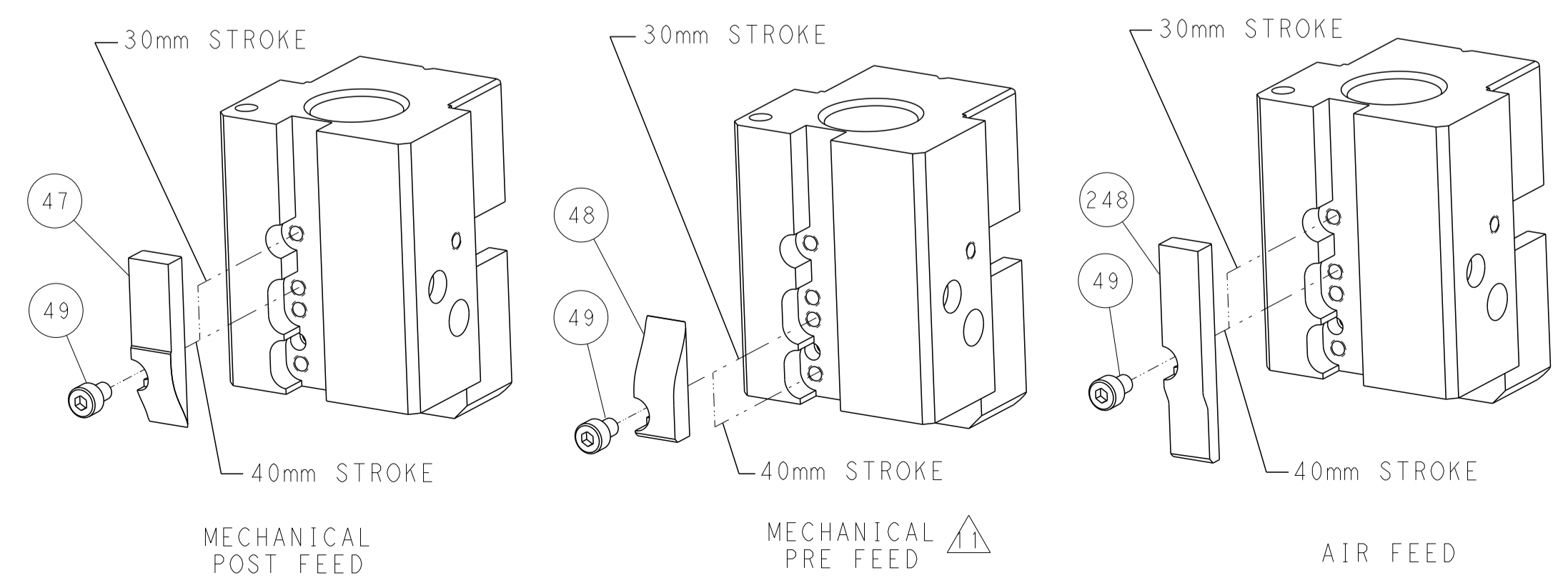
PNEUMATIC



SERVO
LATCH PLATE



CAM POSITIONS



ATLANTIC VERSION
 Shown on sheets 1 of 4 & 2 of 4
 (Pacific version shown on sheets 3 of 4 & 4 of 4)

| | | | | | | | |
|---|--|---|--|---|--|--|--|
| DIMENSIONS: mm | | TOLERANCES UNLESS OTHERWISE SPECIFIED: 0 PLC ± 1 PLC ± 2 PLC ± 3 PLC ± 4 PLC ± ANGLES ± FINISH | | DWN R.O. WILSON 15FEB2013 CHK K.J. STAKEM 20FEB2013 APVD T.L. ELBIN 20FEB2013 PRODUCT SPEC APPLICATION SPEC WEIGHT Customer Accessible Production Drawing | | NAME Ocean End Feed Applicator SIZE CAGE CODE DRAWING NO. RESTRICTED TO A1 00779 C=2150315 SCALE 1:1 SHEET 2 OF 4 REV B | |
| THIS IS DRAWING IS CONTROLLED DOCUMENT FOR THE ELECTRONICS CORPORATION IT IS THE USER'S RESPONSIBILITY TO CONTACT THE ELECTRONICS CORPORATION TO OBTAIN THE LATEST REVISIONS. | | | | TE Connectivity Harrisburg, PA 17105-3608 | | | |

THIS DRAWING IS UNPUBLISHED. RELEASED FOR PUBLICATION 20

APPLICATOR STYLE CONVERSION CHART. Table with columns: CONVERT TO, PART NUMBERS REQUIRED. Rows include PNEUMATIC FEED, SERVO LATCH PLATE, SMART APPLICATOR, MECHANICAL FEED, etc.

APPLICATOR DATA. Table with columns: CRIMP, SIZE, TYPE. Rows: WIRE (2.79 mm), INSUL (4.01 mm), APPL INSTRUCTIONS (408-10390).

TERMINAL DATA: G&H TERMINAL LEAR CRIMP SPECIFICATION. Table with columns: TE TERMINAL, G&H TERMINAL. Rows: 1572845-1 to 1572845-6.

WIRE SIZE, CRIMP HEIGHT, CRIMP HEIGHT REFERENCE SETTING. Table with columns: WIRE SIZE, CRIMP HEIGHT mm [INCH], CRIMP HEIGHT REFERENCE SETTING.

- RECOMMENDED SPARE PARTS
GREASE BEARING SURFACES LIGHTLY
LUBRICATE DAILY PER THE APPLICATOR INSTRUCTION SHEET SUPPLIED WITH THE APPLICATOR.
APPLICATOR SPECIFIC DATA TO BE ENTERED INTO BLANK MEMORY CHIP AT ASSEMBLY.
ADJUSTMENT OF THE STRIPPER MAY BE REQUIRED WHEN MOVING THE APPLICATOR BETWEEN BENCH AND LEADMAKER APPLICATIONS.
APPLY PART NUMBER 1-23419-5 LOCTITE TO THREADS OF ITEM 50 & 62.
GREASE THREADS, GROOVE AND O-RING ON ITEMS 139 & 153.
MAGNET, ITEM 166 MUST BE ORIENTED CORRECTLY IN ORDER TO PROPERLY ACTUATE THE COUNTER.
CRIMP HEIGHT REFERENCE SETTING WAS THE SETTING USED WHEN THE APPLICATOR WAS QUALIFIED AT THE FACTORY.
SPARE FEED CAM STORAGE LOCATION REFER TO INSTRUCTION SHEET FOR ADDITIONAL INFORMATION.
THE RECOMMENDED SET-UP FOR END FEED APPLICATORS IS POST-FEED WITH ITEM 2119653-1.

TERMINAL DATA: G&H TERMINAL TE CRIMP SPECIFICATION. Table with columns: TE TERMINAL, G&H TERMINAL. Rows: 1572845-1 to 1572845-6.

WIRE SIZE, CRIMP HEIGHT, CRIMP HEIGHT REFERENCE SETTING. Table with columns: WIRE SIZE, CRIMP HEIGHT mm [INCH], CRIMP HEIGHT REFERENCE SETTING.

*WARNING
ON INSTALLATION, SET WIRE DISC, ITEM 40 TO LARGEST WIRE SIZE SETTING. USE OF SETTINGS BELOW MINIMUM REQUIRED CRIMP HEIGHT SETTING WILL CAUSE DAMAGE TO CRIMP TOOLING.

Table with columns: PART NO, DESCRIPTION, ITEM NO. Rows: 2119782-1 FINE ADJUST HEAD ASM, 2119640-1 PUSH ROD, AIR FEED, etc.

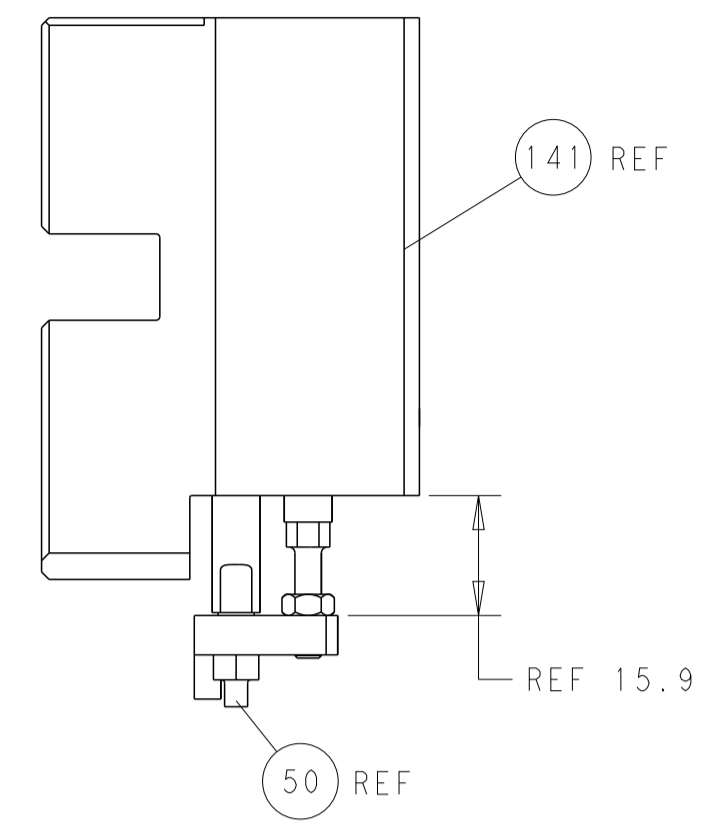
PACIFIC VERSION
Shown on sheets 3 of 4 & 4 of 4
(Atlantic version shown on sheets 1 of 4 & 2 of 4)

SET UP GAUGE 2119599-2, REVISIONS. Table with columns: REVISIONS, DESCRIPTION, DATE, DWN, APVD.

Main parts list table with columns: PART NO, DESCRIPTION, ITEM NO. Rows: 2119083-1 RETAINER, INSULATION DIAL, 2168400-7 SHCS, LOW HEAD, etc.

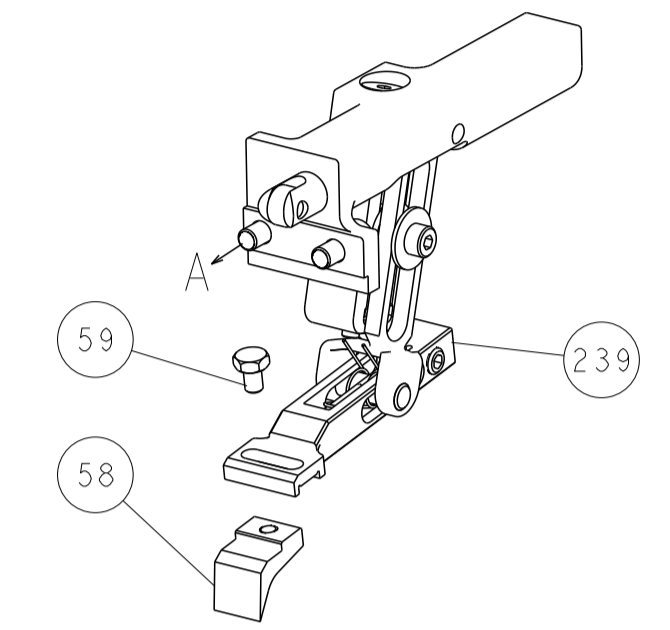
STE logo, dimensions, tolerances, material, weight, scale, sheet information. Includes dimensions, tolerances unless otherwise specified, material, weight, scale 1:1, sheet 3 of 4.

| LOC | DIST | REV | DATE | BY | APPV |
|-----|------|-----|------|----|------|
| A | 66 | | | | |
| | | | | | |
| | | | | | |

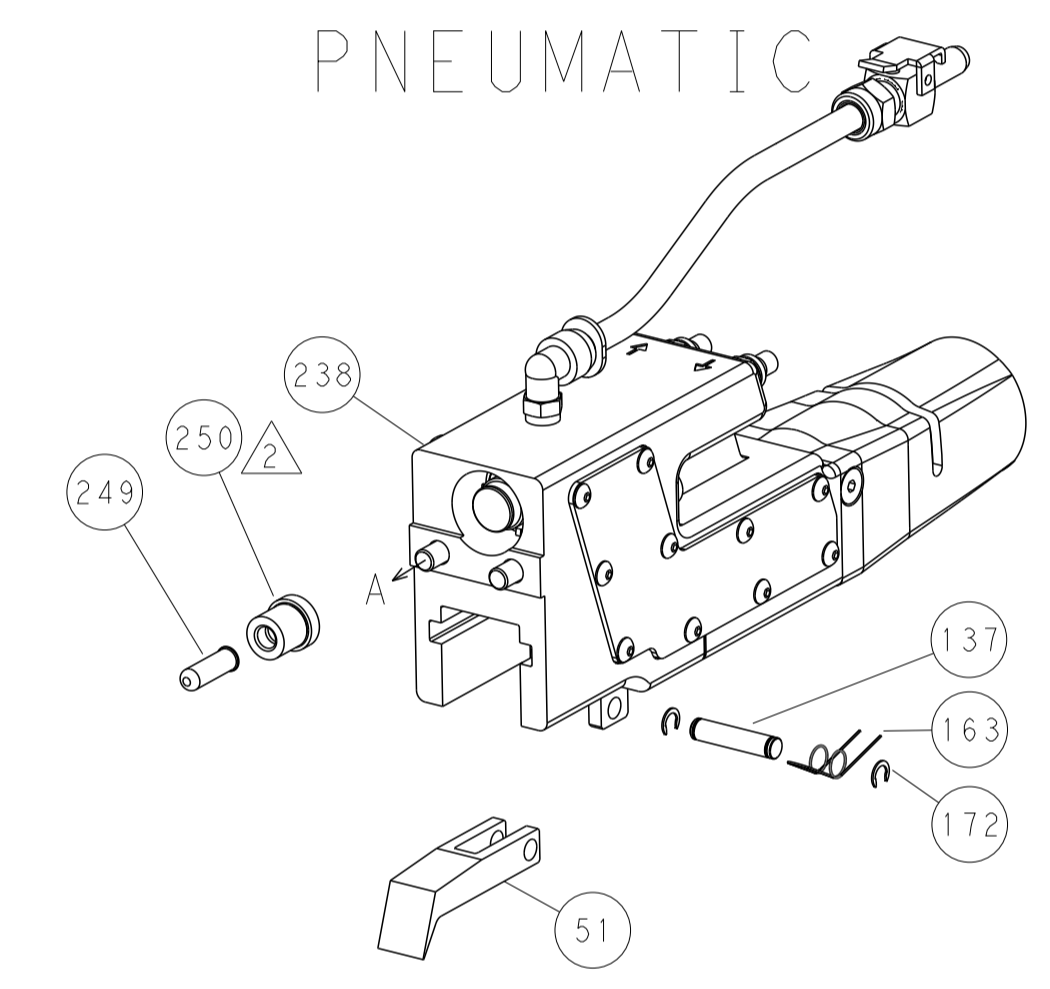


HOLDDOWN SET-UP

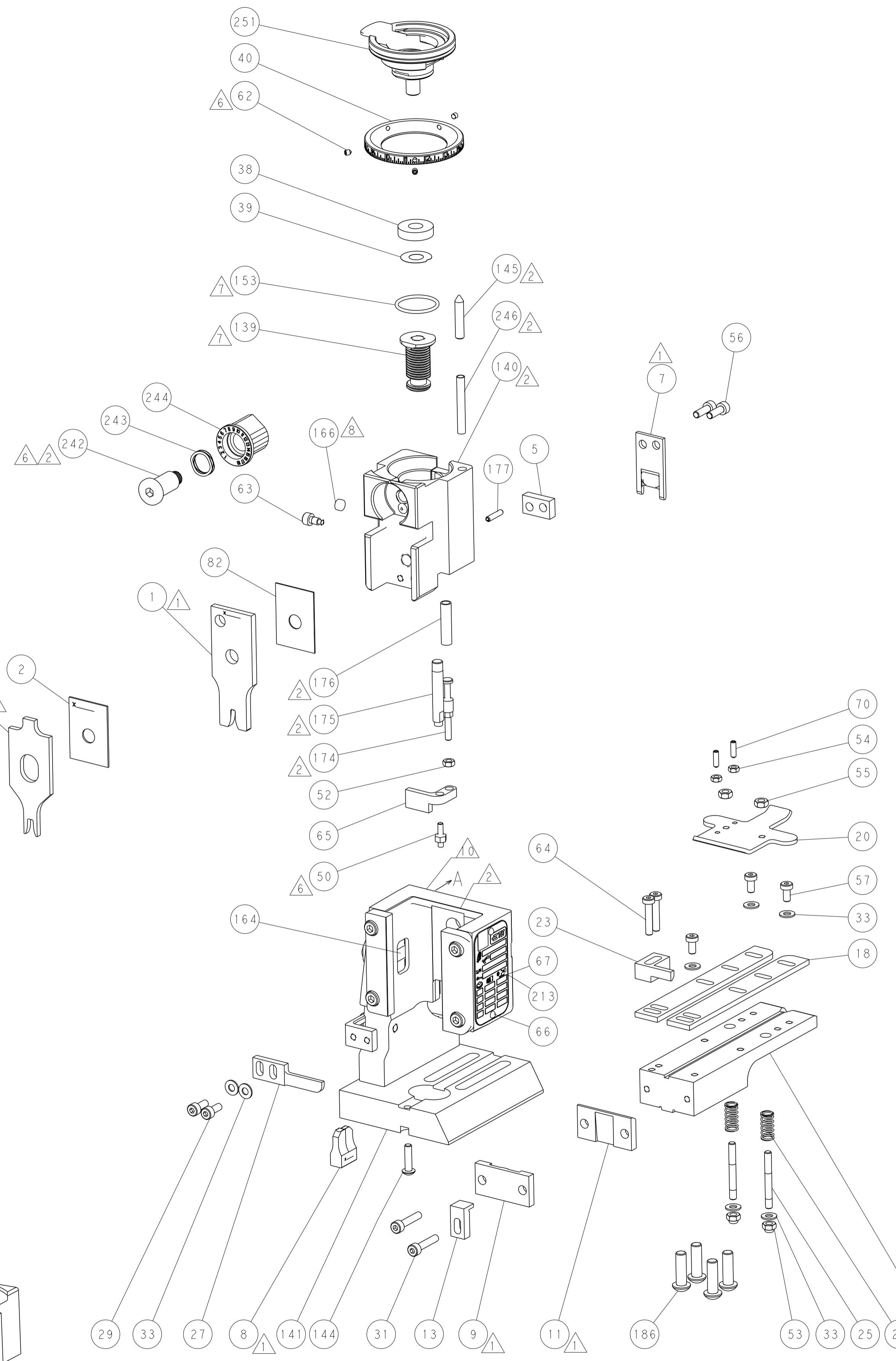
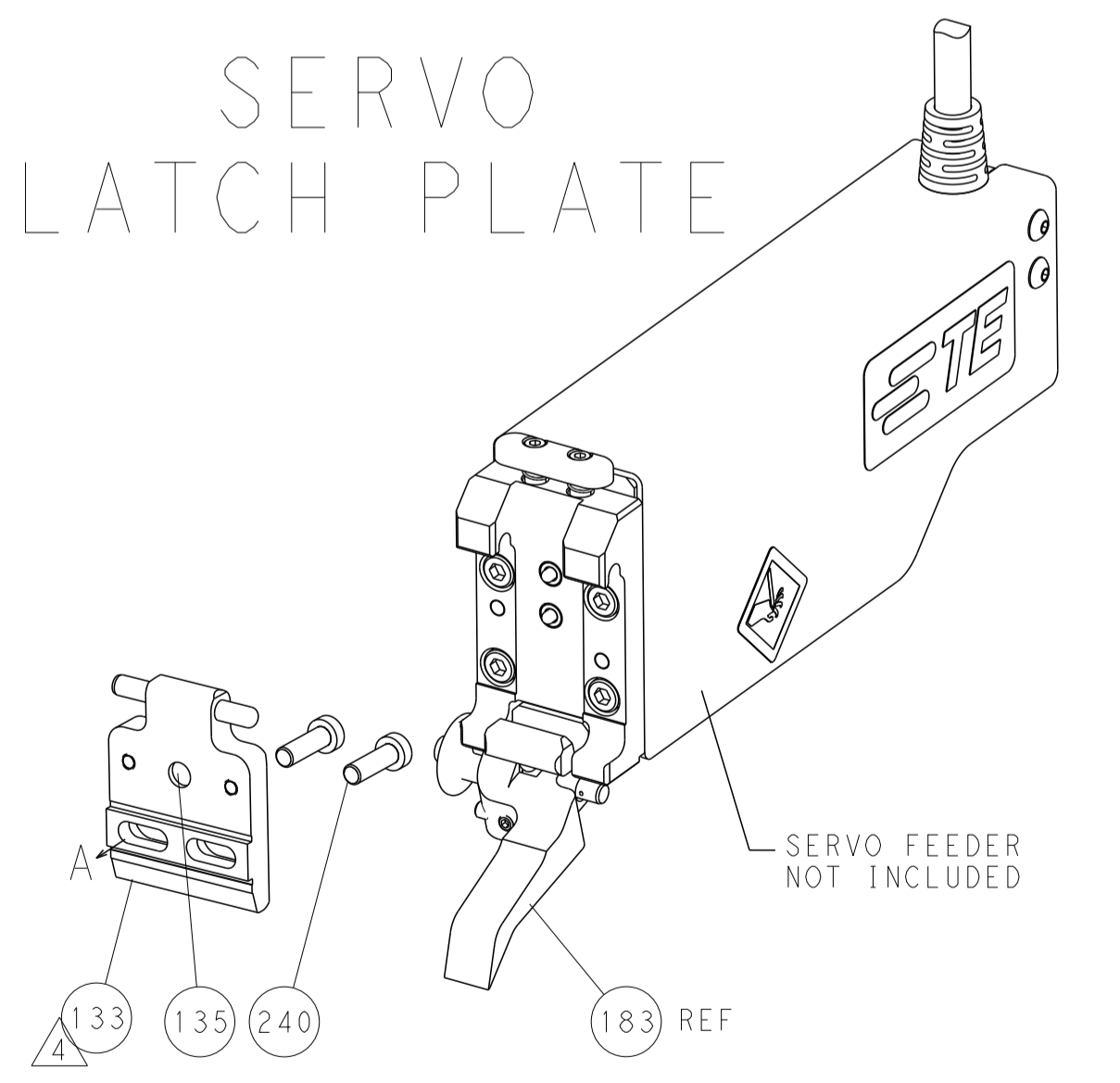
FEED TYPE
MECHANICAL



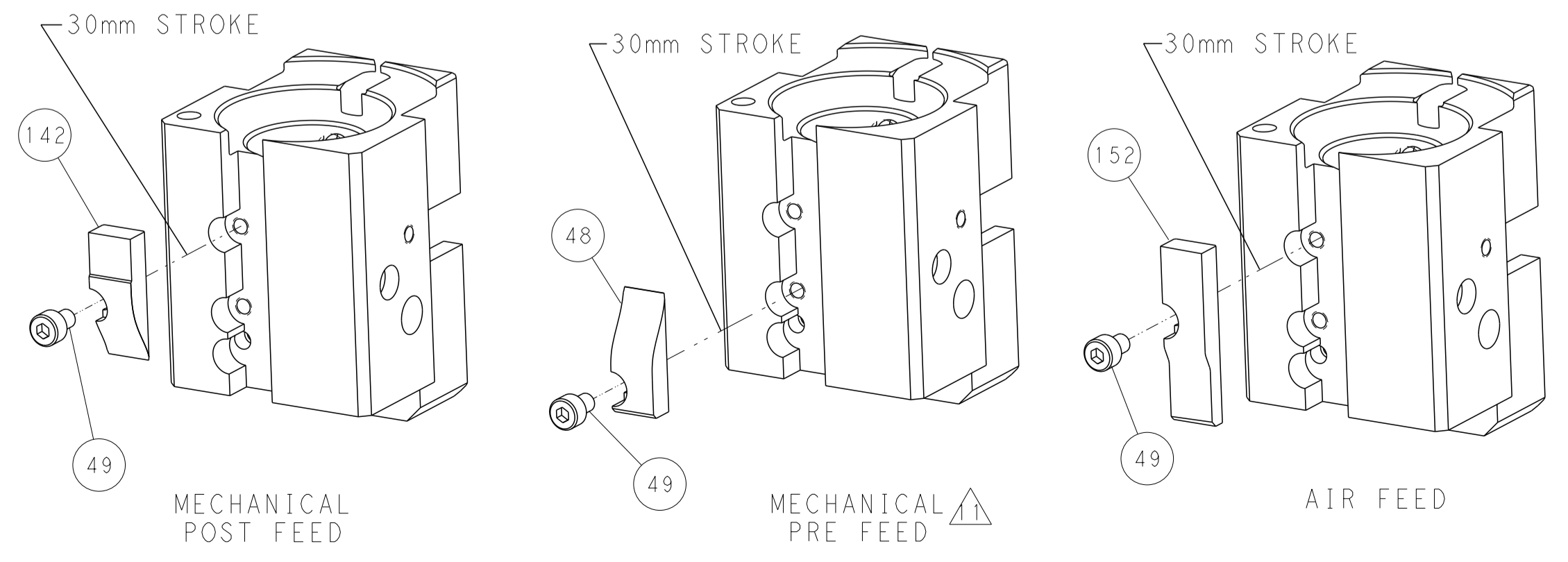
PNEUMATIC



SERVO
LATCH PLATE



CAM POSITIONS



PACIFIC VERSION
 Shown on sheets 3 of 4 & 4 of 4
 (Atlantic version shown on sheets 1 of 4 & 2 of 4)

| | | | | | | | |
|-------------|--|--|---|-------------------------------|--|--|--|
| DIMENSIONS: | | TOLERANCES UNLESS OTHERWISE SPECIFIED: | | DWG R. O. WILSON 15FEB2013 | | TE Connectivity Harrisburg, PA 17105-3608 | |
| mm | | 0 PLC | ± | CHK K. J. STAKEM 20FEB2013 | | NAME | |
| | | 1 PLC | ± | APPV T. L. ELBIN 20FEB2013 | | Ocean End Feed Applier | |
| | | 2 PLC | ± | PRODUCT SPEC | | SIZE CAGE CODE DRAWING NO | |
| | | 3 PLC | ± | APPLICATION SPEC | | A1 00779 C=2150315 | |
| | | 4 PLC | ± | WEIGHT | | RESTRICTED TO | |
| | | ANGLES | ± | MATERIAL | | Customer Accessible Production Drawing | |
| | | FINISH | | SCALE 1:1 | | SHEET 4 OF 4 REV B | |