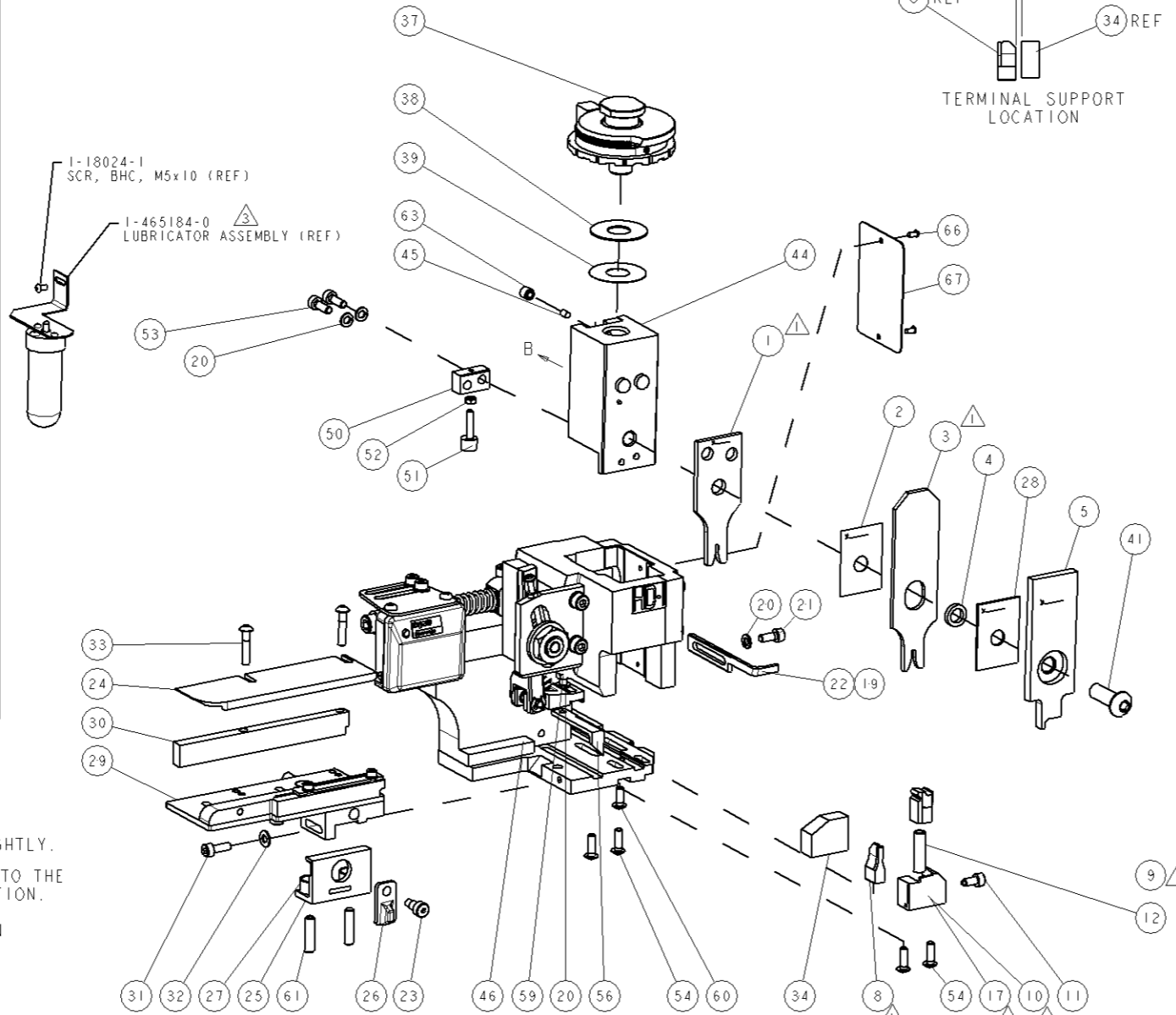
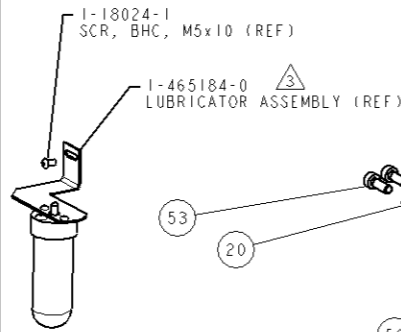


PART NUMBER	REV	TERMINATOR	FEED TYPE	DESCRIPTION
1530019-1	A	LEADMAKER	MECH POST FEED	CUTS CARRIER
1530019-2	A	BENCH	MECH PRE FEED	CUTS CARRIER
1530019-6	A	LEADMAKER	MECH POST FEED	CONTINUOUS CARRIER
7-1530019-1	A	LEADMAKER	MECH POST FEED	-1 AND SPARE PARTS
7-1530019-2	A	BENCH	MECH PRE FEED	-2 AND SPARE PARTS
7-1530019-6	A	LEADMAKER	MECH POST FEED	-6 AND SPARE PARTS
7-1530019-7	A	-	-	SPARE PARTS KIT

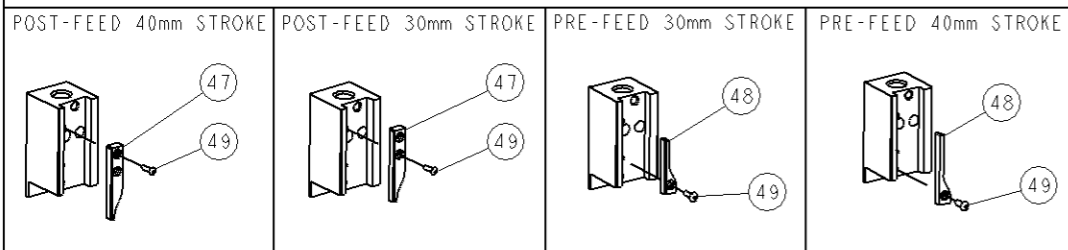
CRIMP DATA		TE TERMINAL	TE CRIMP SPECS
TERMINAL NAME: PIN, .060 DIA, AUTOMOTIVE			
CRIMP	SIZE	TYPE	RANGE
WIRE	1.57 [.062 IN]	F	18 - 22 AWG
INSUL	2.79 [.110 IN]	F	2.794 [.110 IN] MAX
WIRE STRIP LENGTH 3.9-4.7 [.154-.185 IN]		APPL INSTRUCTIONS 408-8322 & 408-8490	
TERMINAL APPL SPEC		114-3118	FEED 9.14 [.360 IN]
TERMINALS APPLIED			
PIN	SOCKET		
61062	61064	-	-
61366	170087	-	-
770381	-	-	-
WIRE SIZE	CRIMP HEIGHT	REF SETTING	
18 AWG	1.07 ± 0.05 [.042 ± .002 IN]	B2	
20 AWG	.91 ± 0.05 [.036 ± .002 IN]	C3	
22 AWG	.84 ± 0.05 [.033 ± .002 IN]	C8	



- RECOMMENDED SPARE PARTS.
- GREASE RAM, CAM, CAM FOLLOWER AND FEED ROD LIGHTLY.
 - CERTAIN TERMINALS REQUIRE LUBRICATION. REFER TO THE APPLICATOR INSTRUCTION SHEET FOR MORE INFORMATION.
 - LUBRICATE DAILY PER THE APPLICATOR INSTRUCTION SHEET SUPPLIED WITH THE APPLICATOR.

*** WARNING**
ON INSTALLATION, SET WIRE DISC TO LARGEST WIRE SIZE SETTING. USE OF SETTINGS BELOW MIN. REQUIRED CRIMP HEIGHT SETTING WILL CAUSE DAMAGE TO CRIMP TOOLING.

VIEW B ROTATED 180°



ITEM NO	PART NO	DESCRIPTION
74		
75		
76		
77		
78		
79		
80		
81		
82		
83		
84		
77		
76		
75		
74		
73		
72		
71		
70		
69		
68		
67		
66		
65		
64		
63		
62		
61		
60		
59		
58		
57		
56		
55		
54		
53		
52		
51		
50		
49		
48		
47		
46		
45		
44		
43		
42		
41		
40		
39		
38		
37		
36		
35		
34		
33		
32		
31		
30		
29		
28		
27		
26		
25		
24		
23		
22		
21		
20		
19		
18		
17		
16		
15		
14		
13		
12		
11		
10		
9		
8		
7		
6		
5		
4		
3		
2		
1		

SET UP GAGE
458637-3

REVOLUTIONS		DATE	BY	APP
A	RELEASED	070C12008	DM	DM
A2	CORRECTED REVISION IN DM	24FEB2009	SZ	SX

ITEM NO	PART NO	DESCRIPTION	ITEM NO
73			
72			
71	1338705-3	DOCUMENTATION PACKAGE	
70			
69			
68			
67	461264-5	PLATE, IDENTIFICATION	
66	21017-2	SCREW, DRIVE	
65			
64			
63	3-18031-0	SCR. SET, CUP POINT M6 X 6.0	
62			
61	2-18032-5	SCR. SET, FLT POINT M5 X 20.0	
60	18024-7	SCR. BTN SKT HD CAP (M4 X 10.0)	
59	5-18022-2	SCR. HEX HD CAP M4 X 8.0	
58			
57			
56	1338685-1	PAWL, FEED	
55			
54	18024-8	SCR. BTN SKT HD CAP (M4 X 12.0)	
53	1-18023-2	SCR. SKT HD CAP M4 X 12.0	
52	18030-1	NUT, HEX, REG M3	
51	811242-5	BUMPER, HOLD DOWN	
50	690753-2	SPACER, TONKER	
49	18024-3	SCR. BTN SKT HD CAP (M3 X 10.0)	
48	1338675-1	CAM, UNIVERSAL PRE FEED	
47	1338676-1	CAM, UNIVERSAL POST-FEED	
46	1320999-3	APPLICATOR SUBASSEMBLY, HDI	
45	690191-1	PLUG, NYLON	
44	1338660-1	RAM	
43			
42			
41	2-18024-6	SCR. BTN SKT HD CAP (M8 X 25.0)	
40			
39	690125-1	SHIM SUB-ASSY	
38	469367-8	SHIM	
37	879103-3	FINE ADJUST HEAD ASSEMBLY	
36			
35			
34	1320934-1	SUPPORT, TERMINAL	
33	1-18024-0	SCR. BTN SKT HD CAP (M4 X 20.0)	
32	18027-2	WASHER, FLAT, REG M4	
31	1-18023-2	SCR. SKT HD CAP M4 X 12.0	
30	1320908-1	SPACER, STRIP GUIDE	
29	1633073-1	STRIP GUIDE ASSEMBLY	
28	1-455888-0	SPACER, CRIMPER	
27	1-22284-0	SPRING, COMPRESSION	
26	356835-1	LEVER, DRAG RELEASE	
25	240792-1	DRAG, TERMINAL	
24	1320928-1	PLATE, STRIP GUIDE	
23	980371-4	SCR. SKT HD SHLDR 5.0 DIA X 6.0	
22	690472-2	STRIPPER	
21	1-18023-1	SCR. SKT HD CAP M4 X 10.0	
20	18025-2	WASHER, SPRG LOCK, REG M4	
19	690472-1	STRIPPER	
18			
17	1338684-1	SHEAR HOLDER, FRONT	
16			
15			
14			
13			
12	3-22280-3	SPRING, COMPRESSION	
11	356885-4	STOP, SHEAR	
10	1320921-1	SHEAR HOLDER, FRONT, CUT	
9	462006-1	FLOATING SHEAR, FRONT	
8	1633129-1	ANVIL, COMBINATION .062	
7			
6			
5	2-455889-0	DEPRESSOR, SHEAR	
4	238011-4	BLOCK, CRIMPER SPACER	
3	6-456134-5	CRIMPER, INSULATION F PREMIUM	
2	455888-1	SPACER, CRIMPER	
1	1-456403-5	CRIMPER, WIRE PREMIUM	

ITEM NO	PART NO	DESCRIPTION	ITEM NO
77			
76			
75			
74			
73			
72			
71			
70			
69			
68			
67			
66			
65			
64			
63			
62			
61			
60			
59			
58			
57			
56			
55			
54			
53			
52			
51			
50			
49			
48			
47			
46			
45			
44			
43			
42			
41			
40			
39			
38			
37			
36			
35			
34			
33			
32			
31			
30			
29			
28			
27			
26			
25			
24			
23			
22			
21			
20			
19			
18			
17			
16			
15			
14			
13			
12			
11			
10			
9			
8			
7			
6			
5			
4			
3			
2			
1			