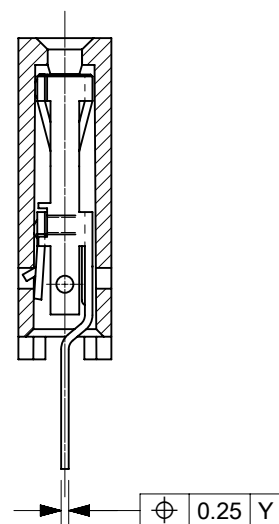


RECOMMENDED P.C. BOARD  
HOLE PATTERN  
FOR STRAIGHT PINS.

NOTES:

1. CONTACT-PLATED PHOSPHOR BRONZE.
2. HOUSING-15% GLASS FILLED POLYESTER.  
COLOUR: BLACK.
3. FOR 0.635/[.025] SQ. MALE PINS THE LENGTH MUST BE 5.65/[.222] MIN & 7.00/[.276] MAX. TO ENSURE GOOD CONNECTION WITH CONTACT.
4. PRODUCT SPECIFICATION: PS-99020-0001.
5. PCB THICKNESS 1.6MM



SECTION C-C  
SHOWING STRAIGHT PINS.

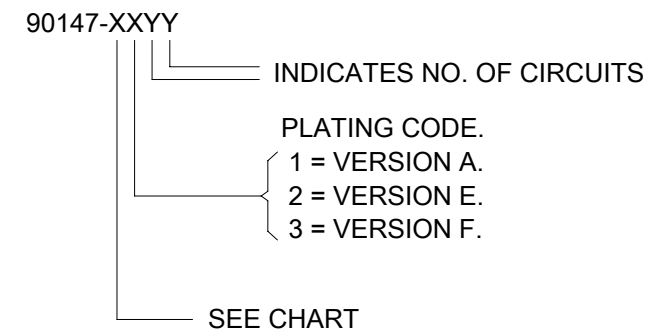
THIS DRAWING CONTAINS INFORMATION THAT IS PROPRIETARY TO MOLEX ELECTRONIC TECHNOLOGIES, LLC AND SHOULD NOT BE USED WITHOUT WRITTEN PERMISSION									
DIMENSION UNITS <b>MM/INCH</b>		SCALE <b>5:1</b>		CURRENT REV DESC: MIGRATED TO NX				<b>molex</b>	
GENERAL TOLERANCES (UNLESS SPECIFIED)				EC NO: 613447					
		MM	INCH	DRWN: ABABU01		2019/03/06		C-GRID III, SINGLE ROW VERTICAL P.C. BOARD CONNECTOR ASSEMBLY.	
4 PLACES ±		±	±	CHK'D: NMANE02		2019/03/11		PRODUCT CUSTOMER DRAWING	
3 PLACES ±		±	±	APPR: MRAMAKRISHNA		2019/03/11		DOCUMENT NUMBER	
2 PLACES ±		±	±	INITIAL REVISION:				SDA-90147	
1 PLACE ±		±	±	DRWN: DB		1987/07/14		DOC TYPE DOC PART REVISION	
0 PLACES ±		±	±	APPR: JDENNEHY		2005/07/07		PSD 001 AD1	
ANGULAR TOL ± 2.0°				MATERIAL NUMBER		CUSTOMER		SHEET NUMBER	
DRAFT WHERE APPLICABLE MUST REMAIN WITHIN DIMENSIONS		THIRD ANGLE PROJECTION		DRAWING		SERIES		SEE TABLE GENERAL MARKET 1 OF 2	

PART NO'S - STRAIGHT PINS		NO. OF CKTS.	A	B <sup>+0.00</sup> -0.30 [B <sup>+0.000</sup> -.012]	QTY. PER TUBE
STANDARD	CUSTOMER SPECIFIC				
90147-1X02	_____	2	2.54/[.100]	5.08/[.200]	105
90147-1X03	_____	3	5.08/[.200]	7.62/[.300]	72
90147-1X04	_____	4	7.62/[.300]	10.16/[.400]	52
90147-1X05	90147-9105	5	10.16/[.400]	12.70/[.500]	44
90147-1X06	_____	6	12.70/[.500]	15.24/[.600]	36
90147-1X07	_____	7	15.24/[.600]	17.78/[.700]	30
90147-1X08	_____	8	17.78/[.700]	20.32/[.800]	26
90147-1X09	_____	9	20.32/[.800]	22.86/[.900]	22
90147-1X10	_____	10	22.86/[.900]	25.40/[1.000]	22
90147-1X11	_____	11	25.40/[1.000]	27.94/[1.100]	20
90147-1X12	_____	12	27.94/[1.100]	30.48/[1.200]	18
90147-1X13	_____	13	30.48/[1.200]	33.02/[1.300]	16
90147-1X14	_____	14	33.02/[1.300]	35.56/[1.400]	14
90147-1X15	_____	15	35.56/[1.400]	38.10/[1.500]	14
90147-1X16	_____	16	38.10/[1.500]	40.64/[1.600]	13
90147-1X17	_____	17	40.64/[1.600]	43.18/[1.700]	13
90147-1X18	_____	18	43.18/[1.700]	45.72/[1.800]	12
90147-1X19	_____	19	45.72/[1.800]	48.26/[1.900]	12
90147-1X20	_____	20	48.26/[1.900]	50.80/[2.000]	11
90147-1X21	_____	21	50.80/[2.000]	53.34/[2.100]	11
90147-1X22	_____	22	53.34/[2.100]	55.88/[2.200]	10
90147-1X23	_____	23	55.88/[2.200]	58.42/[2.300]	9
90147-1X24	_____	24	58.42/[2.300]	60.96/[2.400]	9
90147-1X25	_____	25	60.96/[2.400]	63.50/[2.500]	8
90147-1X26	_____	26	63.50/[2.500]	66.04/[2.600]	8
90147-1X27	_____	27	66.04/[2.600]	68.58/[2.700]	8
90147-1X28	_____	28	68.58/[2.700]	71.12/[2.800]	7
90147-1X29	_____	29	71.12/[2.800]	73.66/[2.900]	7
90147-1X30	_____	30	73.66/[2.900]	76.20/[3.000]	7
90147-1X31	_____	31	76.20/[3.000]	78.74/[3.100]	7
90147-1X32	_____	32	78.74/[3.100]	81.28/[3.200]	6

**PLATING VERSION A**  
PRE-PLATED HOT DIP TIN  
1.0 TO 2.5 µm [.000040" TO .000100"].

**PLATING VERSION E**  
1.27 TO 1.78 µm [.000050" TO .000070"] NICKEL  
OVERALL, 0.38 TO 0.64 µm [.000015" TO .000025"]  
GOLD ON CONTACT AREA (OVER NICKEL).  
3 TO 5 µm [.000120" TO .000200"] TIN  
ON SOLDER TAILS (OVER NICKEL).

**PLATING VERSION F.**  
1.27 TO 1.78 µm [.000050" TO .000070"] NICKEL  
OVERALL, 0.76 TO 1.0 µm [.000030" TO .000040"]  
GOLD ON CONTACT AREA (OVER NICKEL).  
3 TO 5 µm [.000120" TO .000200"] TIN  
ON SOLDER TAILS (OVER NICKEL).



**STANDARD PRODUCTS**

THIS DRAWING CONTAINS INFORMATION THAT IS PROPRIETARY TO MOLEX ELECTRONIC TECHNOLOGIES, LLC AND SHOULD NOT BE USED WITHOUT WRITTEN PERMISSION											
DIMENSION UNITS <b>MM/INCH</b>		SCALE <b>1:1</b>		CURRENT REV DESC: MIGRATED TO NX				<b>molex</b>		C-GRID III, SINGLE ROW VERTICAL P.C. BOARD CONNECTOR ASSEMBLY.	
GENERAL TOLERANCES (UNLESS SPECIFIED)				EC NO: 613447							
4 PLACES ±		3 PLACES ±		2 PLACES ±		1 PLACE ±		0 PLACES ±		ANGULAR TOL ± 2.0°	
DRWN: ABABU01		2019/03/06		CHK'D: NMANE02		2019/03/11		APPR: MRAMAKRISHNA		2019/03/11	
INITIAL REVISION:				DRWN: DB				1987/07/14		DOCUMENT NUMBER	
APPR: JDENNEHY				2005/07/07				<b>SDA-90147</b>		PSD 001 AD1	
DRAFT WHERE APPLICABLE MUST REMAIN WITHIN DIMENSIONS		THIRD ANGLE PROJECTION		DRAWING		SERIES		MATERIAL NUMBER		CUSTOMER	
				<b>B-SIZE</b>		<b>90147</b>		SEE TABLE		GENERAL MARKET	
										SHEET NUMBER 2 OF 2	