

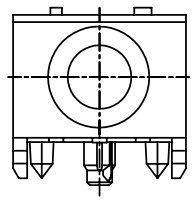
1

2

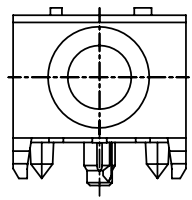
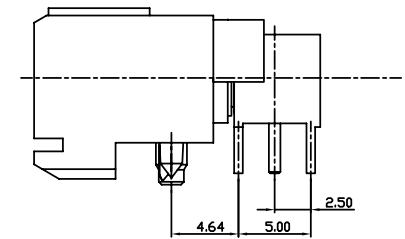
3

4

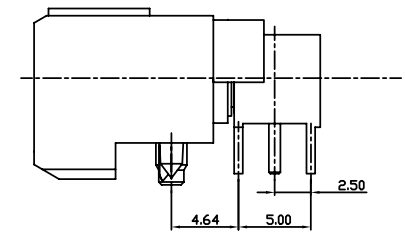
PRODUCT NUMBER	STYLE
10012562-001	STYLE A
10012562-001LF	
10012562-002	STYLE B STRONG HOUSING
10012562-002LF	



STYLE A

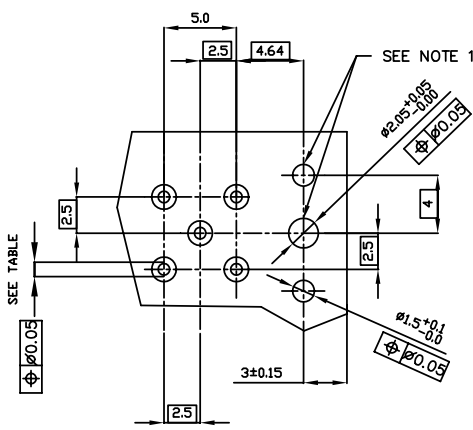


STYLE B



NOTES:

- ① INDICATED HOLES ARE TO BE UNPLATED
- ② FOR DIMENSIONAL AND PRODUCT INFORMATION CONCERNING P/N 71634-103 REFER TO DRAWING 71634.
- ③ FOR DIMENSIONAL AND PRODUCT INFORMATION CONCERNING P/N 72718-001A OR 72718-002A REFER TO DRAWING 72718.
- 4. ADD LF SUFFIX AT THE END OF THE PART NUMBER FOR LEAD FREE OPTION
- 5. THIS PRODUCT MEETS EUROPEAN UNION DIRECTIVES AND OTHER COUNTRY REGULATION AS DESCRIBED IN GS-22-008



RECOMMENDED HOLE PATTERN, COMPONENT SIDE.

PRESS FIT HOLES	
HOLE DIAMETER AFTER PLATING	0.65 - 0.80
DRILLED HOLE	0.81 - 0.86 (0.85 DRILL)
COPPER PLATING	0.025 MIN
TIN PLATING	0.005 - 0.015

rev	ecn no	dr	date
A	V21222	CGD	07/29/02
B	V21619	TAB	10/10/02
C	M06-0239	AGS	06/15/06
D	M09-0129	MHT	08/26/09
E	N10-0055	R.B	02/24/10
F	N10-0381	A.ZH	11/09/10

www.fciconnect.com		surface ISO 1302	tolerance ISO 406 ISO 1101	projection MM
Dr	C.DAILY	07/29/02	TOLERANCES UNLESS OTHERWISE SPECIFIED	
Eng	M.GRAY	07/29/02	ANGULAR	LINEAR
Chr	M.GRAY	07/29/02	0°	±2.0°
Appr	M.GRAY	07/29/02	0.X	± 0.30
			0.XX	± 0.15
			0.XXX	± 0.05
			size	A4
			Scale	1:1
			Product family	METRAL
			ECN	N10-0381
			Spec ref	
			title	METRAL R/A COAX RECEPTACLE KIT
			catalog no	
			dwg no	10012562
			Rev.	F
			CUSTOMER	
			sheet	1 of 1



Copyright FCI.

1

2

3 PDM: Rev:F

STATUS: Released

4 Printed: Nov 12, 2010