

PART NO. AND WEEK/YEAR DATE CODE TO BE PRINTED ON BACK OF COVER APPROXIMATELY AS SHOWN. SEE TABLE BELOW FOR DATE CODE INFORMATION.

WEEK/YEAR DATE CODE TABLE	
WK	WEEK OF THE YEAR 01 THRU 52 (EXAMPLE: 01= FIRST WEEK OF YEAR 52= LAST WEEK OF YEAR)
YR	19, 20, 21 ETC.,,(EXAMPLE: YEAR 2019= 19)

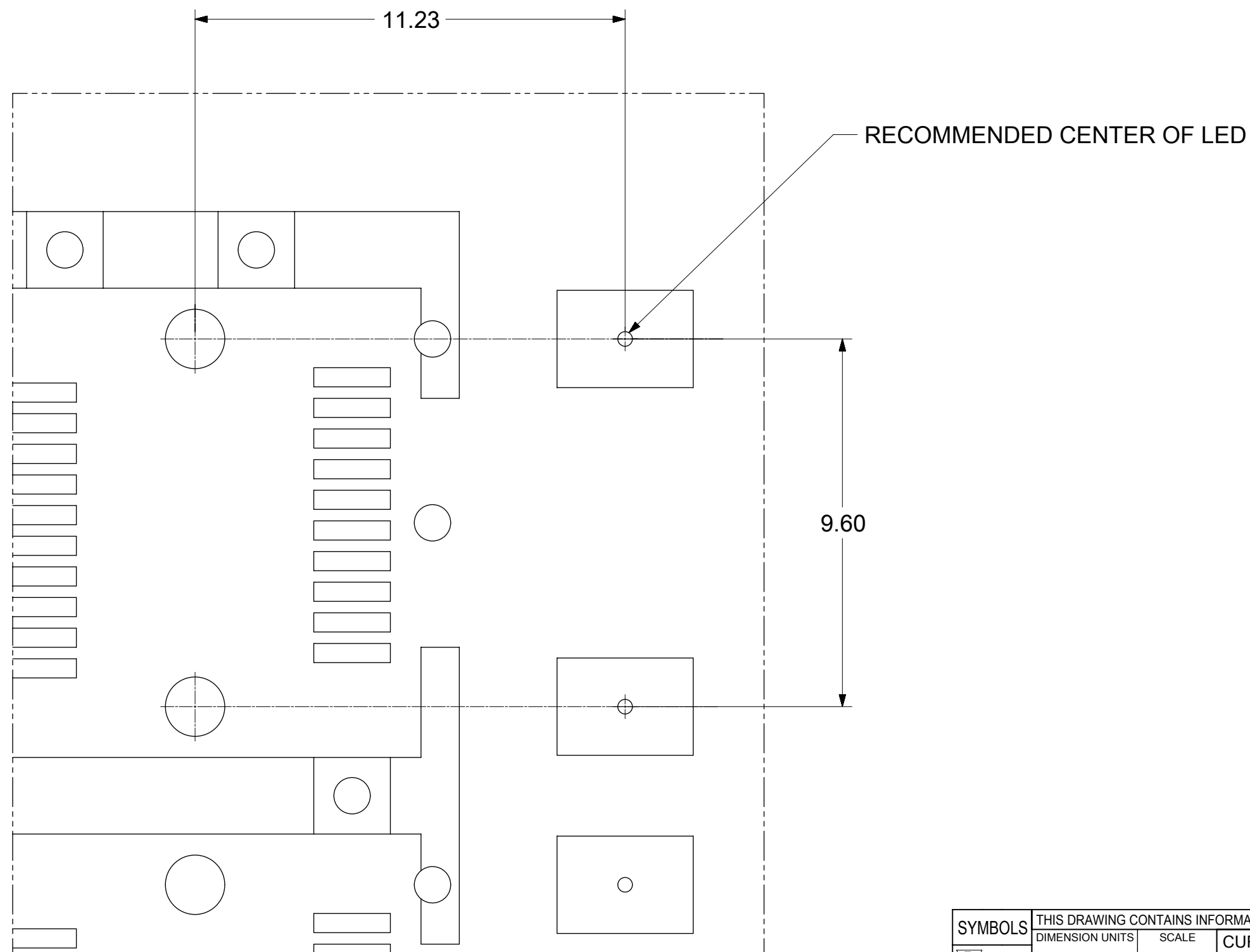
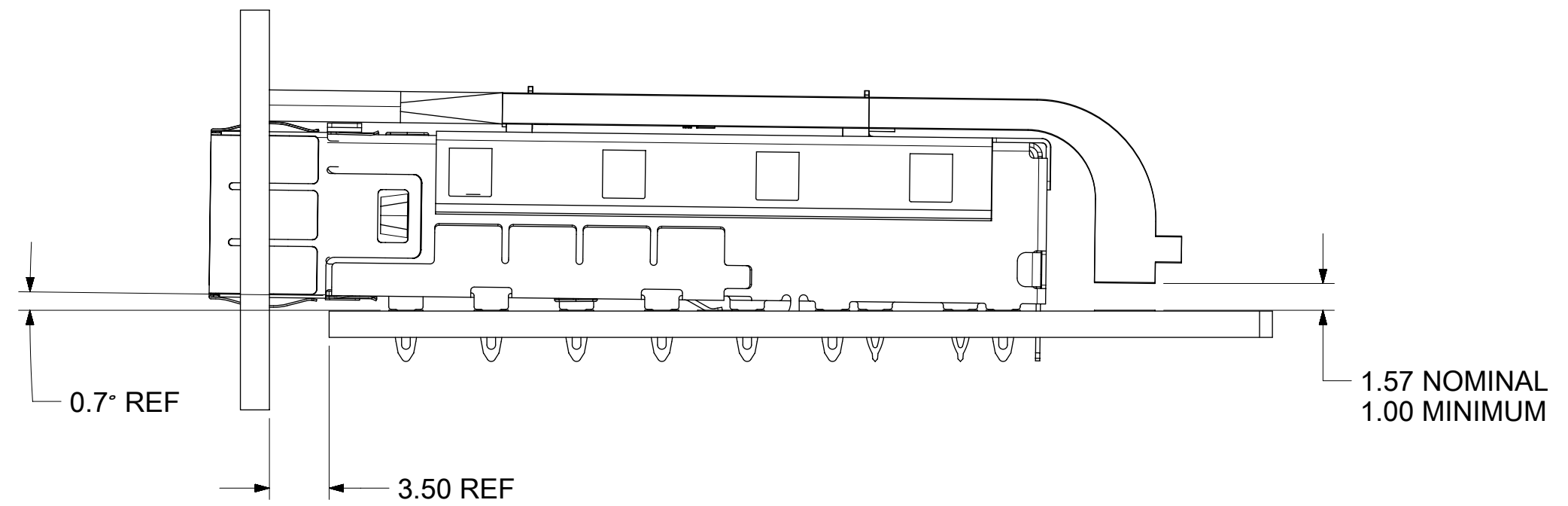
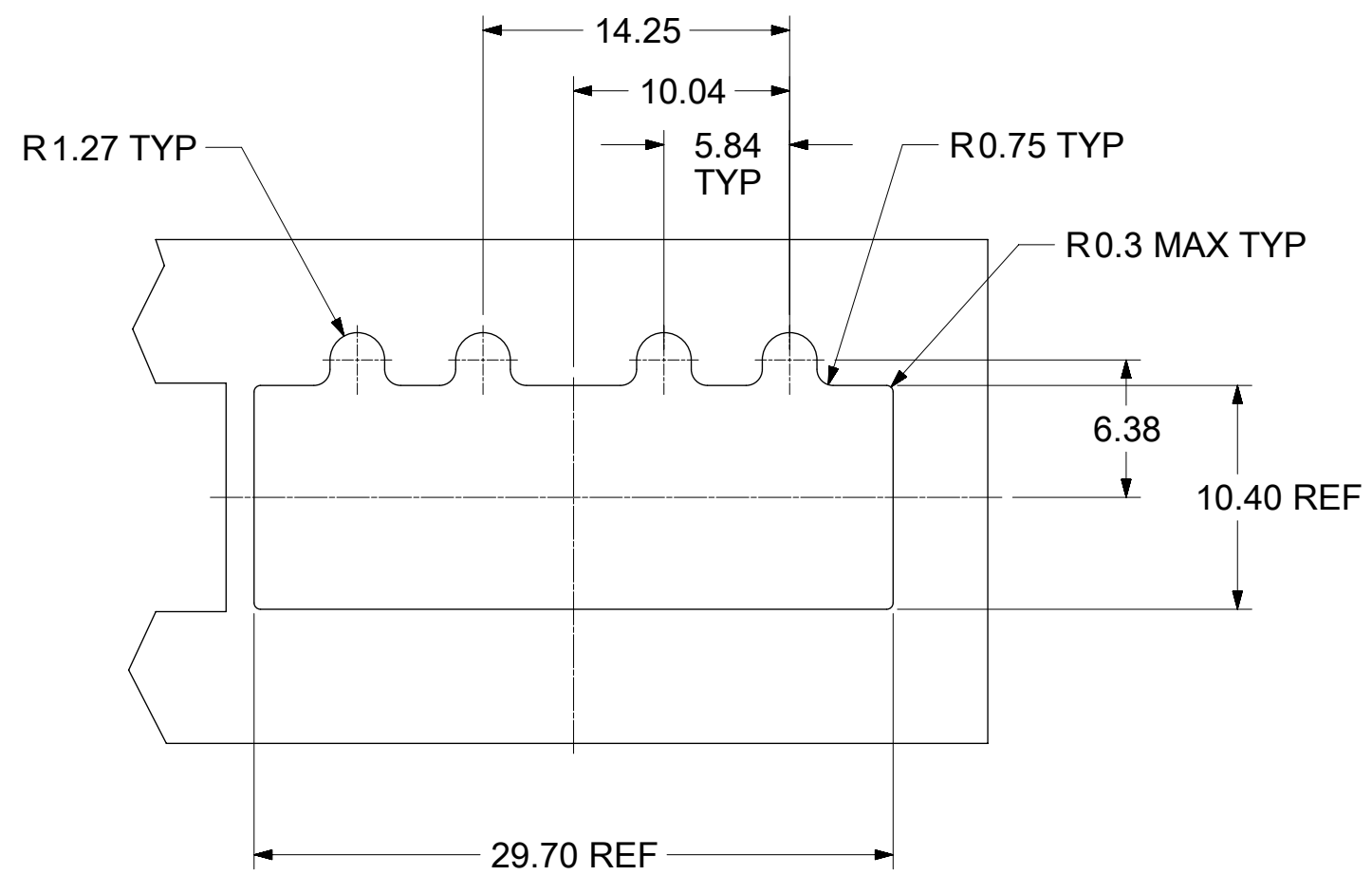
- MATERIAL:
COVER: COPPER ALLOY
LIGHT PIPE: POLYCARBONATE (94-V0 RATED)
- THIS LIGHT PIPE ASSEMBLY IS TO BE USED WITH THE SFP+ 1X4 CAGE ASSEMBLY P/N 747540224
- IT IS RECOMMENDED THAT THE CAGE BE PRESSED INTO OR SOLDERED TO THE PCB PRIOR TO ASSEMBLING THE LIGHT PIPE ASSEMBLY.
- NO RoHS EXEMPTIONS

SYMBOLS		THIS DRAWING CONTAINS INFORMATION THAT IS PROPRIETARY TO MOLEX ELECTRONIC TECHNOLOGIES, LLC AND SHOULD NOT BE USED WITHOUT WRITTEN PERMISSION	
▽ = 0	DIMENSION UNITS	SCALE	CURRENT REV DESC: SEE REVISION TABLE
▽ = 0	mm	4:1	
▽ = 0	GENERAL TOLERANCES (UNLESS SPECIFIED)		
▽ = 0	ANGULAR TOL ± 1.0°		
▽ = 0	4 PLACES	±	EC NO: 610070
▽ = 0	3 PLACES	±	DRWN: PMAHADEVAPPA 2018/12/19
▽ = 0	2 PLACES	± 0.15	CHK'D: TKUMARKC 2019/01/08
▽ = 0	1 PLACE	± 0.25	APPR: RCHEN08 2019/01/09
▽ = 0	0 PLACES	±	INITIAL REVISION:
▽ = 0	DRAFT WHERE APPLICABLE MUST REMAIN WITHIN DIMENSIONS		DRWN: TMARRI 2017/03/08
▽ = 0	THIRD ANGLE PROJECTION		APPR: RCHEN08 2017/04/26
		DRAWING	SERIES
		C-SIZE	74754
DOCUMENT STATUS		DOCUMENT NUMBER	DOC TYPE DOC PART REVISION
P1	RELEASE DATE 2019/01/09 08:17:00	747540024	PSD ASY B1
		MATERIAL NUMBER	CUSTOMER
		747540024	
		SHEET NUMBER	
		1 OF 3	



SFP+ 1X2 PCI LIGHT PIPE COVER ASSY, ULTRA LOW PROFILE, BACK TOP

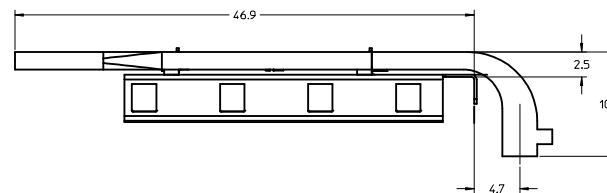
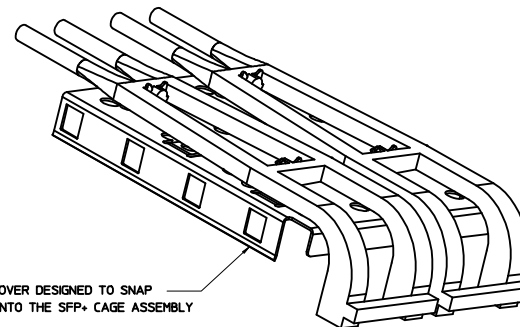
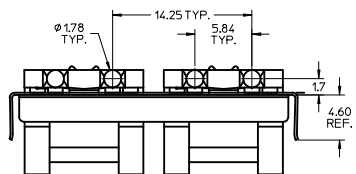
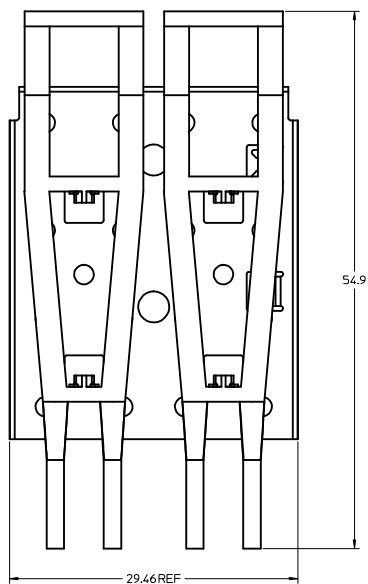
PRODUCT CUSTOMER DRAWING



←
HOST PCB EDGE NEAREST
SFP CAGE OPENING

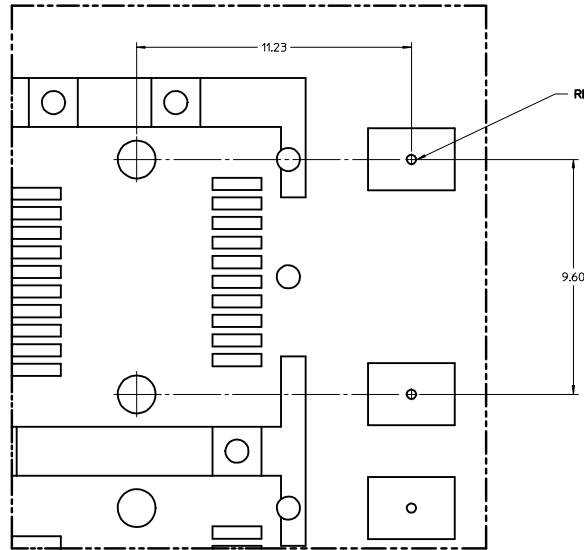
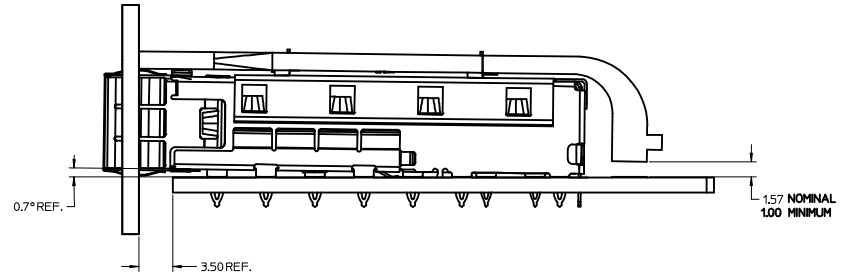
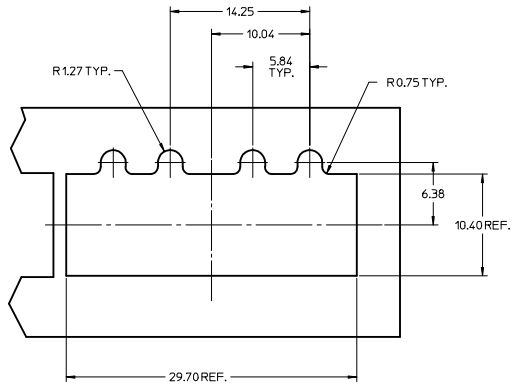
HOST PCB LAYOUT (SCALE 8:1)
1. LED SHOULD BE PLACED RELATIVE TO THE SFP
CONNECTOR POST HOLES
2. LAYOUT APPLIES TO EACH PORT

THIS DRAWING CONTAINS INFORMATION THAT IS PROPRIETARY TO MOLEX ELECTRONIC TECHNOLOGIES, LLC AND SHOULD NOT BE USED WITHOUT WRITTEN PERMISSION												
SYMBOLS		DIMENSION UNITS	SCALE	CURRENT REV DESC: SEE REVISION TABLE			molex					
▽ = 0	mm	3:1	EC NO: 610070 DRWN: PMAHADEVAPPA 2018/12/19 CHK'D: TKUMARKC 2019/01/08 APPR: RCHEN08 2019/01/09			SFP+ 1X2 PCI LIGHT PIPE COVER ASSY, ULTRA LOW PROFILE, BACK TOP						
▽ / = 0	GENERAL TOLERANCES (UNLESS SPECIFIED)									PRODUCT CUSTOMER DRAWING		
▽ = 0	ANGULAR TOL ± 1.0°					INITIAL REVISION: DRWN: TMARRI 2017/03/08 APPR: RCHEN08 2017/04/26			DOCUMENT NUMBER			
▽ / S = 0	4 PLACES ±								747540024			PSD
▽ = 0	3 PLACES ±		MATERIAL NUMBER 747540024			CUSTOMER		SHEET NUMBER 2 OF 3				
▽ = 0	2 PLACES ± 0.15											
▽ = 0	1 PLACE ± 0.25		C-SIZE		74754							
⊠ = 0	0 PLACES ±		THIRD ANGLE PROJECTION		DRAWING							
■ = 0	DRAFT WHERE APPLICABLE MUST REMAIN WITHIN DIMENSIONS		C-SIZE		74754							



1. MATERIAL:
COVER: COPPER ALLOY
LIGHT PIPE: POLYCARBONATE (94-V0 RATED)
2. THIS LIGHT PIPE ASSEMBLY IS TO BE USED WITH THE SFP+ 1X4 CAGE ASSEMBLY P/N 747540224
3. IT IS RECOMMENDED THAT THE CAGE BE PRESSED INTO OR SOLDERED TO THE PCB PRIOR TO ASSEMBLING THE LIGHT PIPE ASSEMBLY.
4. THIS PART MEETS THE RESTRICTION OF HAZARDOUS SUBSTANCES IN ELECTRICAL AND ELECTRONIC EQUIPMENT (RoHS) DIRECTIVE (2002/95/EC)

RELEASED IEC NO. USY2009-0596 DRAWN: JRESENDE 2009/08/26 CHYKD: 2009/08/26 APPR.: JRESENDE 2009/08/26 REV: DESCRIPTION	QUALITY SYMBOLS		GENERAL TOLERANCES (UNLESS SPECIFIED)		DIMENSION STYLE		SCALE	DESIGN UNITS	THIRD ANGLE PROJECTION
	▽=0 ▽=0		mm INCH 4 PLACES ± --- ± --- 3 PLACES ± --- ± --- 2 PLACES ± 0.15 ± --- 1 PLACE ± 0.25 ± --- ANGULAR ± 1°		MM ONLY DRAWN BY: JRESENDE 2009/6/19 CHECKED BY: JRESENDE 2009/6/19 APPROVED BY: KJANOTA 2009/6/19		4:1	METRIC	TITLE: SFP+ 1X2 PCI LIGHT PIPE COVER ASSY, ULTRA LOW PROFILE, BACK TOP MOLEX INCORPORATED
	DRAFT WHERE APPLICABLE MUST REMAIN WITHIN DIMENSIONS		MATERIAL NO. 747540024		DOCUMENT NO. SD-74754-0024				SHEET NO. 1 OF 2
			SIZE D		THIS DRAWING CONTAINS INFORMATION THAT IS PROPRIETARY TO MOLEX INCORPORATED AND SHOULD NOT BE USED WITHOUT WRITTEN PERMISSION				



←
HOST PCB EDGE NEAREST
SFP CAGE OPENING

HOST PCB LAYOUT (SCALE 10:1)
1. LED SHOULD BE PLACED RELATIVE TO THE SFP
CONNECTOR POST HOLES
2. LAYOUT APPLIES TO EACH PORT

RELEASED IEC NO. USY2009-0596 DRAWN: JRESENDE 2009/08/26 CHYK: 2009/08/26 APPR: JRESENDE 2009/08/26 REVISIONS REVISION DESCRIPTION	QUALITY SYMBOLS = 0 = 0		GENERAL TOLERANCES (UNLESS SPECIFIED)		DIMENSION STYLE MM ONLY	SCALE 3:1	DESIGN UNITS METRIC	THIRD ANGLE PROJECTION
	4 PLACES	± 0.25	mm	INCH	DRAWN BY: JRESENDE DATE: 2009/6/19	TITLE: SFP+ 1X2 PCI LIGHT PIPE COVER ASSY, ULTRA LOW PROFILE, BACK TOP		
	3 PLACES	± 0.15	mm	INCH	CHECKED BY: JRESENDE DATE: 2009/6/19	MOLEX INCORPORATED		
	2 PLACES	± 0.15	mm	INCH	APPROVED BY: KJANOTA DATE: 2009/6/19	MATERIAL NO. 747540024	DOCUMENT NO. SD-74754-0024	SHEET NO. 2 OF 2
DRAFT WHERE APPLICABLE MUST REMAIN WITHIN DIMENSIONS				THIS DRAWING CONTAINS INFORMATION THAT IS PROPRIETARY TO MOLEX INCORPORATED AND SHOULD NOT BE USED WITHOUT WRITTEN PERMISSION				