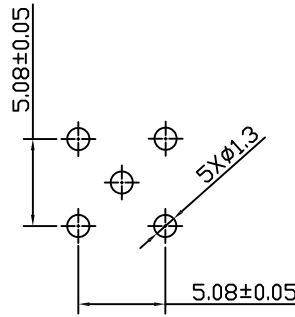
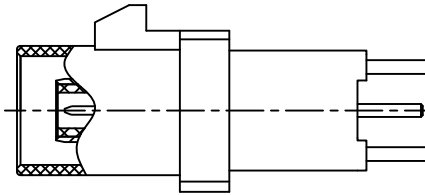
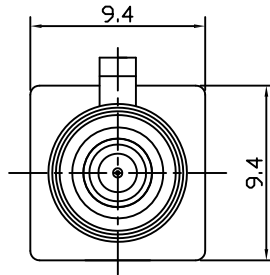
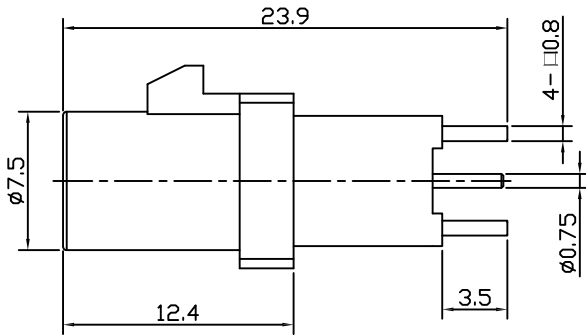
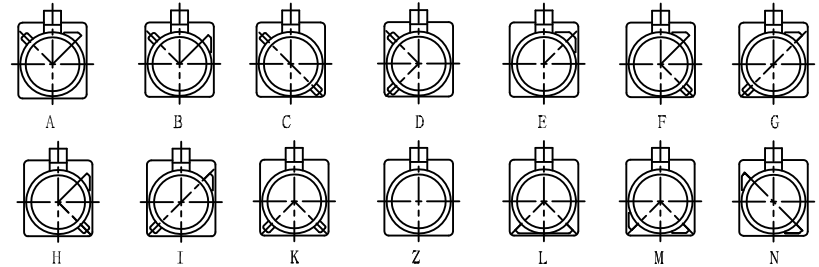


APPROVED: _____
 DATE: _____ TITLE: _____

Rev	AWO #	Description	Date	Appr
-		RELEASED	6/6/18	



RECOMMENDED P.C.B LAYOUT



Port Type

Type	Color	Item No
A	BLACK	RF55-29A-T-00-50-G-SH
B	WHITE	RF55-29B-T-00-50-G-SH
C	BLUE	RF55-29C-T-00-50-G-SH
D	BORDEAUX VIOLET	RF55-29D-T-00-50-G-SH
E	GREEN	RF55-29E-T-00-50-G-SH
F	BROWN	RF55-29F-T-00-50-G-SH
G	GREY	RF55-29G-T-00-50-G-SH
H	VIOLET	RF55-29H-T-00-50-G-SH
I	BEIGE	RF55-29I-T-00-50-G-SH
K	CURRY	RF55-29K-T-00-50-G-SH
Z	WATER BLUE	RF55-29Z-T-00-50-G-SH
L	CARMINE RED	RF55-29L-T-00-50-G-SH
M	PASTEL ORANGE	RF55-29M-T-00-50-G-SH
N	PASTEL GREEN	RF55-29N-T-00-50-G-SH

PLASTIC SHELL	PA66+30%GF	
INSULATOR	PTFE	
PIN CONTACT	BRASS	GOLD
BODY	BRASS	GOLD
DESCRIPTION	MATERIAL	FINISH

SPECIFICATIONS:

Electrical:
 Frequency range: DC~4 GHz
 Nominal Impedance: 50 ohms
 Withstanding voltage: 335 V
 Insulator Resistance: 1000 MΩ
 Contact Resistance: 6 Milliohms max. (Center Contact)
 1 Milliohms max. (Outer Contact)

Temperature Rating:
 Operating temperature: -40°C to +85°C
 Environmental:
 Lead free, RoHS compliant.



UNLESS OTHERWISE SPECIFIED
 ALL DIMENSIONS ARE MILLIMETERS
 TOLERANCES: EXCEPT AS NOTED
 INCHES HOLES

.X	± 0.25	∅XX	± 0.13
.XX	± 0.15		
.XXX	+ 0.05		

APPROVALS		DATE
DRAWN	AY	6/6/18
CHECKED	MY	6/6/18
APPROVED		

ADAM TECH
 INTERCONNECTS
 909 Rahway Avenue,
 Union, NJ 07083
 Phone: 908-687-5000
 Fax: 908-687-5710

TITLE FAKRA PLUG SMB TYPE STRAIGHT, FOR DIP		
SIZE X	PART NO. RF55-29X-T-00-50-G-SH	REV. -
REF: S00134C	SCALE: NTS	SHEET 1 OF 1