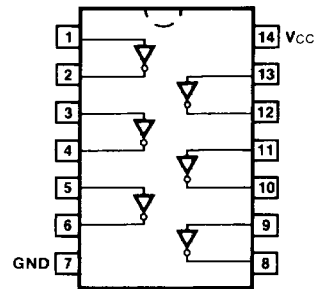


✓ 54/7404 010560
 ✓ 54H/74H04 010564
 ✓ 54S/74S04 110565
 ✓ 54S/74S04A 010565
 ✓ 54LS/74LS04 010563
HEX INVERTER

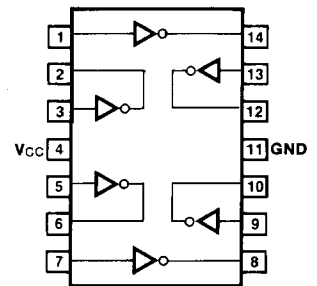
**CONNECTION DIAGRAMS
PINOUT A**



ORDERING CODE: See Section 9

PKGS	PIN OUT	COMMERCIAL GRADE	MILITARY GRADE	PKG TYPE
		V _{CC} = +5.0 V ±5%, T _A = 0°C to +70°C	V _{CC} = +5.0 V ±10%, T _A = -55°C to +125°C	
Plastic DIP (P)	A	7404PC, 74H04PC 74S04PC, 74S04APC 74LS04PC		9A
Ceramic DIP (D)	A	7404DC, 74H04DC 74S04DC, 74S04ADC 74LS04DC	5404DM, 54H04DM 54S04DM, 54S04ADM 54LS04DM	6A
Flatpak (F)	A	74S04FC, 74S04AFC 74LS04FC	54S04FM, 54S04AFM 54LS04FM	3I
	B	7404FC, 74H04FC	5404FM, 54H04FM	

PINOUT B



INPUT LOADING/FAN-OUT: See Section 3 for U.L. definitions

PINS	54/74 (U.L.) HIGH/LOW	54/74H (U.L.) HIGH/LOW	54/74S (U.L.) HIGH/LOW	54/74LS (U.L.) HIGH/LOW
Inputs	1.0/1.0	1.25/1.25	1.25/1.25	0.5/0.25
Outputs	20/10	12.5/12.5	25/12.5	10/5.0 (2.5)

DC AND AC CHARACTERISTICS: See Section 3*

SYMBOL	PARAMETER	54/74	54/74H	54/74S	54/74LS	UNITS	CONDITIONS	
		Min Max	Min Max	Min Max	Min Max			
I _{CC} H	Power Supply	12	26	24	2.4	mA	V _{IN} = Gnd	V _{CC} = Max
I _{CC} L	Current	33	58	54	6.6		V _{IN} = Open	
t _{PL} H	Propagation Delay	22	10	2.0 4.5	10	ns	Fig. 3-1, 3-4	
t _{PH} L		15	10	2.0 5.0	10			
t _{PL} H	Propagation Delay (54/74S04A only)			1.0 3.5		ns	Fig. 3-1, 3-4	
t _{PH} L				1.0 4.0				

*DC limits apply over operating temperature range; AC limits apply at T_A = +25°C and V_{CC} = +5.0 V.

4