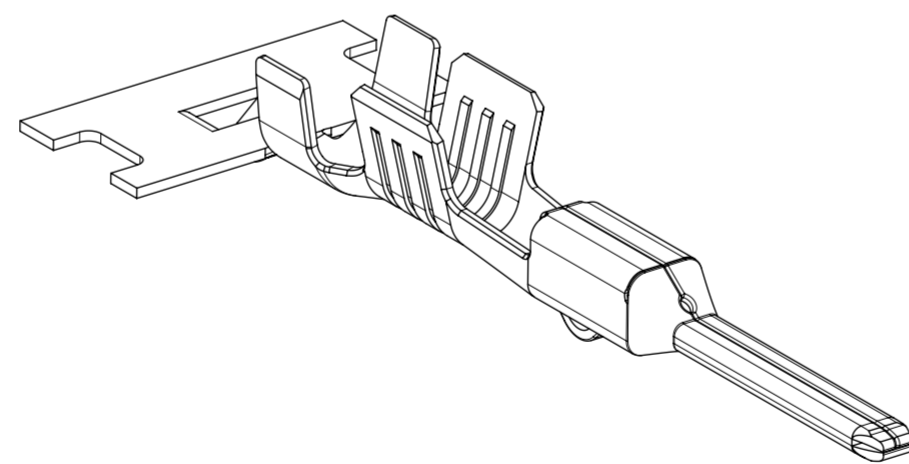
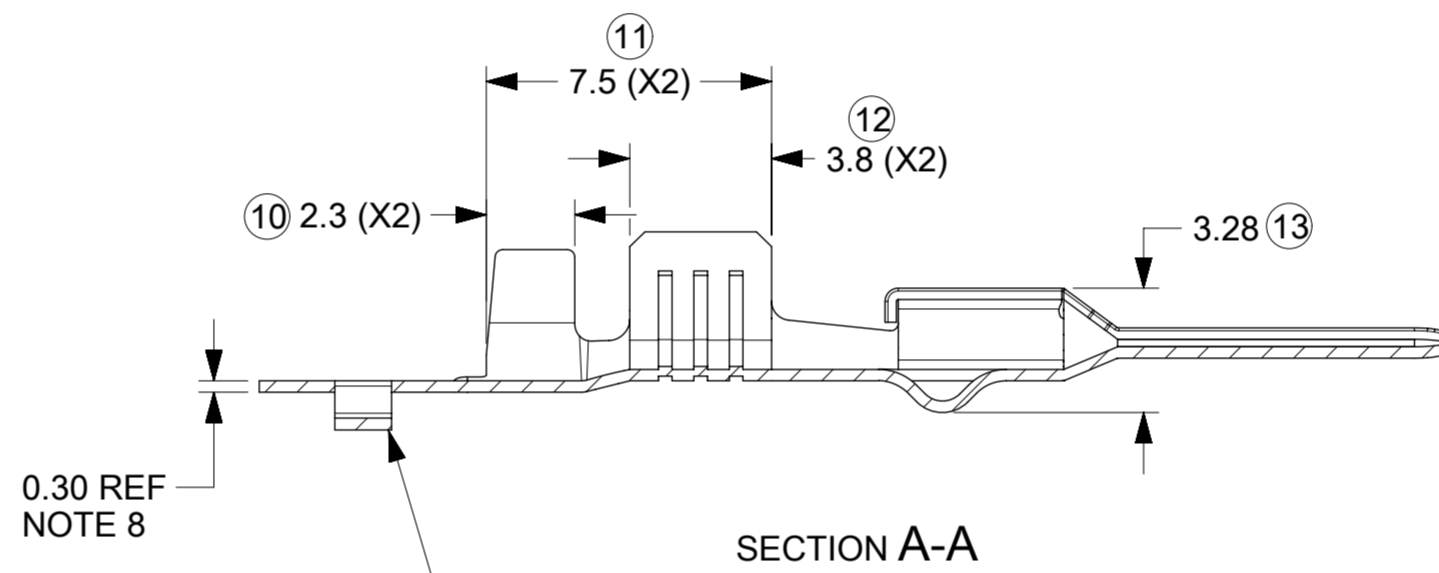
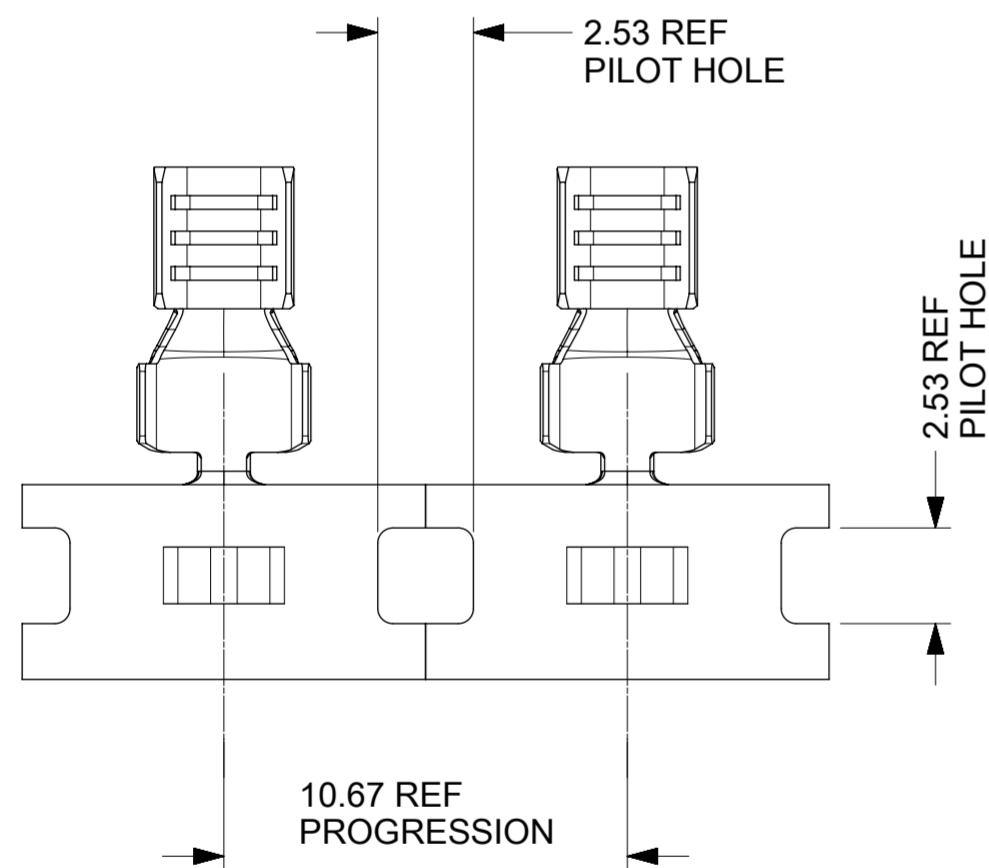


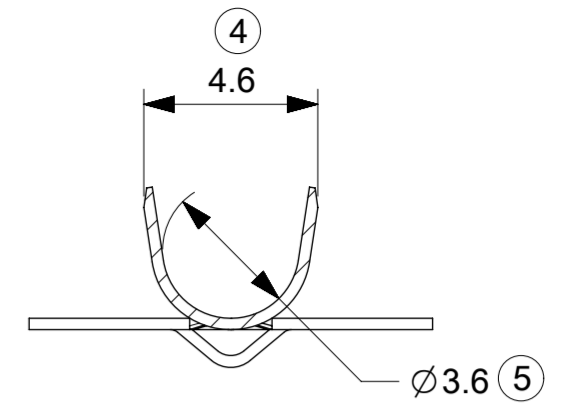
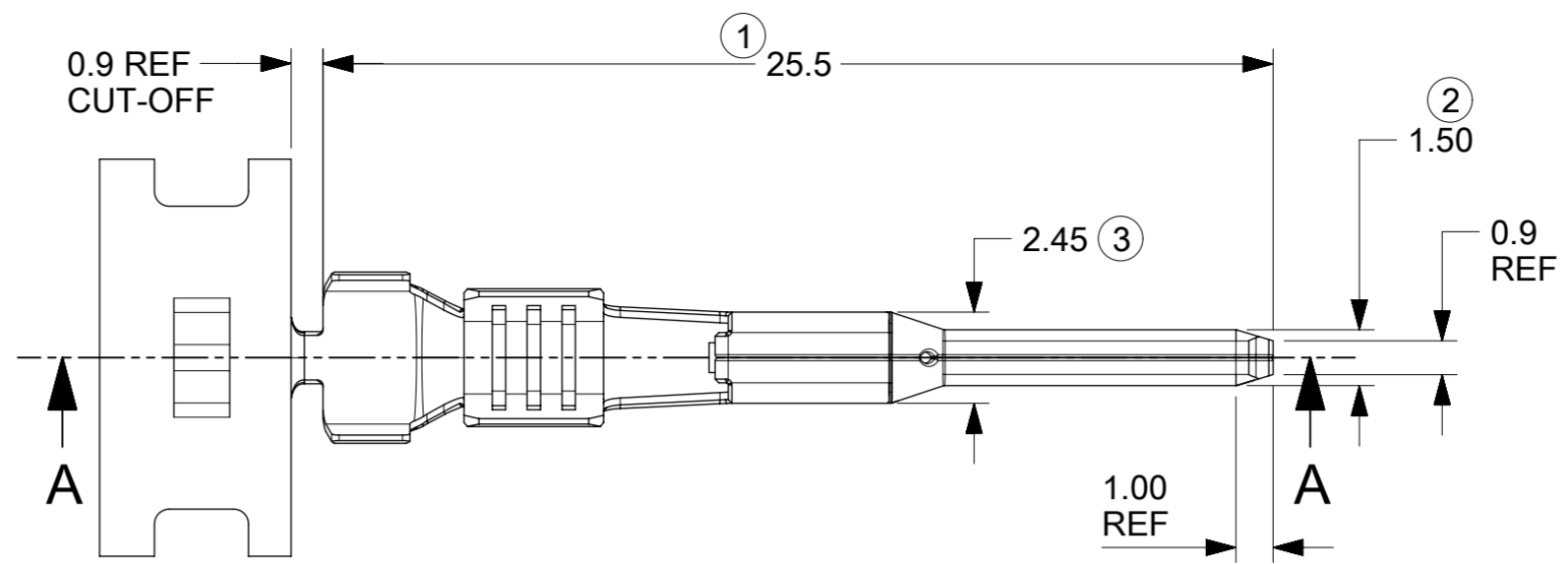
NOTES:

1. MATERIAL: COPPER ALLOY
2. TIN PLATED TERMINAL FINISH:
TIN (Sn), THICKNESS = 0.5 MICROMETRE MINIMUM
NICKEL (Ni) UNDERPLATE OVERALL
3. GOLD PLATED TERMINAL FINISH:
SELECTIVE GOLD (Au) IN CONTACT AREA, THICKNESS = 0.76 MICROMETRE MINIMUM
SELECTIVE TIN (Sn) IN GRIP AREA, THICKNESS = 2.5 MICROMETRE MINIMUM
NICKEL (Ni) UNDERPLATE OVERALL
4. SILVER PLATED TERMINAL FINISH:
SELECTIVE SILVER (Ag) IN CONTACT AREA, THICKNESS = 1.9 MICROMETRE MINIMUM
SELECTIVE TIN (Sn) IN GRIP AREA, THICKNESS = 2.5 MICROMETRE MINIMUM
NICKEL (Ni) UNDERPLATE OVERALL
5. MATES WITH: REFERENCE 936430010 PSD
6. PACKAGING SPECIFICATION: 936420010 PSK
7. APPLICATION SPECIFICATION: ATS-639033100
8. GRIP INSULATION STEP HEIGHT
9. TSC ON A DIMENSION TO BE INTERPRETED AS THE DISTANCE TO A THEORETICAL SHARP CORNER AS IF THE RADIUS WERE NOT PRESENT
10. STANDARD PLATING OPTION IS SILVER; CONTACT SALES OFFICE FOR ALTERNATIVE PLATING OPTIONS

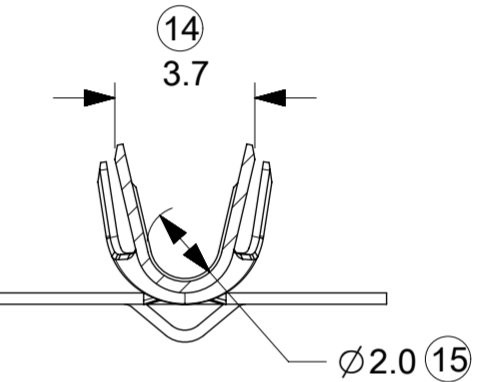
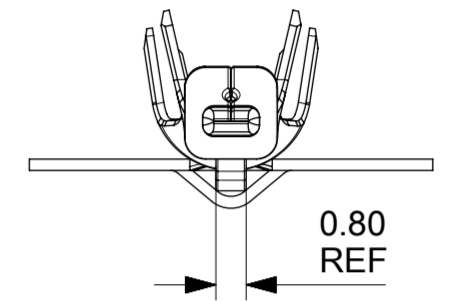
LAST INSPECTION NUMBER USED: 15



CARRIER BUMP DIRECTION:
POINTS DOWN FOR TIN PLATED TERMINALS
POINTS UP FOR PRECIOUS METAL PLATED TERMINALS

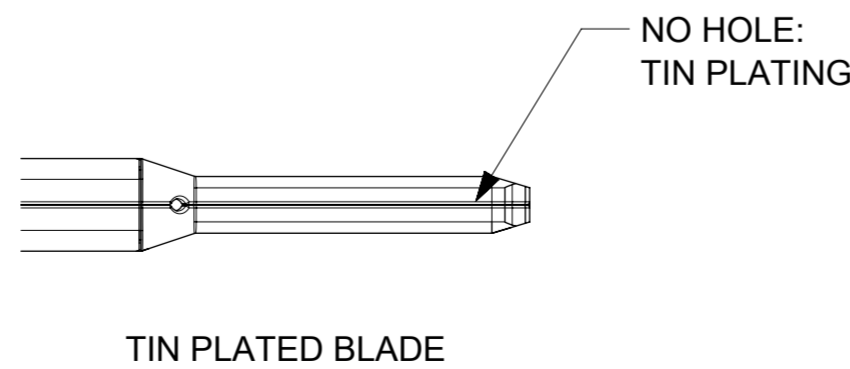
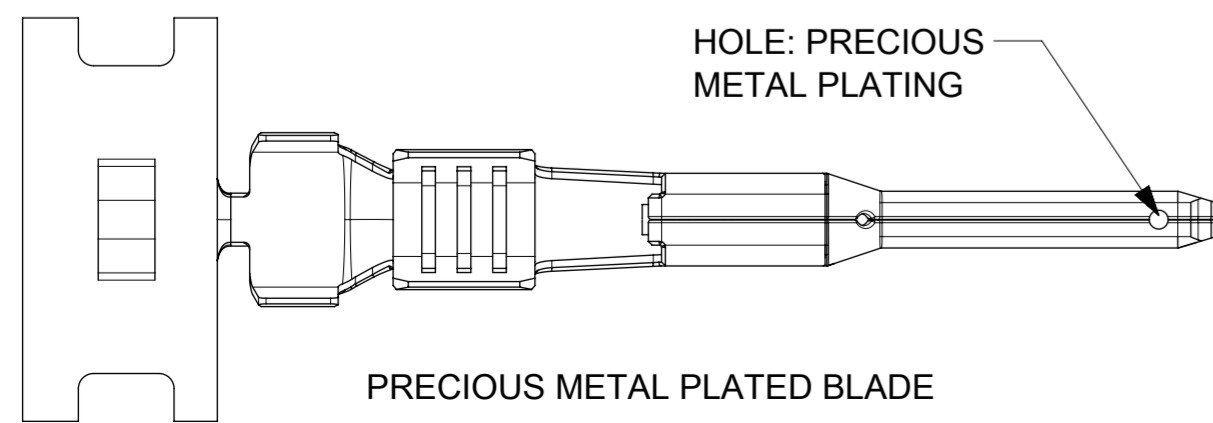


SECTION B-B



SECTION C-C

PART NUMBER	DESCRIPTION	AVAILABILITY
93642-0001	REEL OF SRC BLADE TERMINALS. TIN PLATED	SEE NOTE 10
93642-1001	REEL OF SRC BLADE TERMINALS. SILVER PLATED	AVAILABLE
93642-2001	REEL OF SRC BLADE TERMINALS. GOLD PLATED	SEE NOTE 10



QUALITY SYMBOLS ▽ = 0 ▽ = 0 ▽ = 0 ▽ = 0 ▽ = 0 ▽ = 0 ▽ = 0 ▽ = 0 ▽ = 0 ▽ = 0 ▽ = 0	THIS DRAWING CONTAINS INFORMATION THAT IS PROPRIETARY TO MOLEX INCORPORATED AND SHOULD NOT BE USED WITHOUT WRITTEN PERMISSION				
	EC NO: 101384 DRWN: KREILLY CHKD: JWALLACE APPR: JWALLACE	2015/10/08 2015/10/22 2015/10/22	GENERAL TOLERANCES (UNLESS SPECIFIED) ANGULAR TOL ± 2.0 ° 4 PLACES ± 3 PLACES ± 2 PLACES ± 0.2 1 PLACE ± 0.35 0 PLACES ± DRAFT WHERE APPLICABLE MUST REMAIN WITHIN DIMENSIONS	DIMENSION UNITS: mm SCALE: 5:1 DRWN BY: AJOBRIEN DATE: 2015/03/20 CHK'D BY: JFLETCHER DATE: 2015/03/24 APPR BY: JDWALLACE DATE: 2015/04/17	molex SRC BLADE TERMINAL 2.5MM ² THIN WALL CABLE AS PER ISO 6722 PRODUCT CUSTOMER DRAWING
	A1	A2	DRAWING SIZE: A2 THIRD ANGLE PROJECTION	SERIES: 93642 MATERIAL NUMBER: SEE TABLE CUSTOMER: GENERAL MARKET	DOCUMENT NUMBER: 936420010 DOC TYPE: PSD DOC PART: 000 SHEET NUMBER: 1 OF 1
	RELEASE STATUS: P1 RELEASE DATE: 2015/10/23 09:07:45				