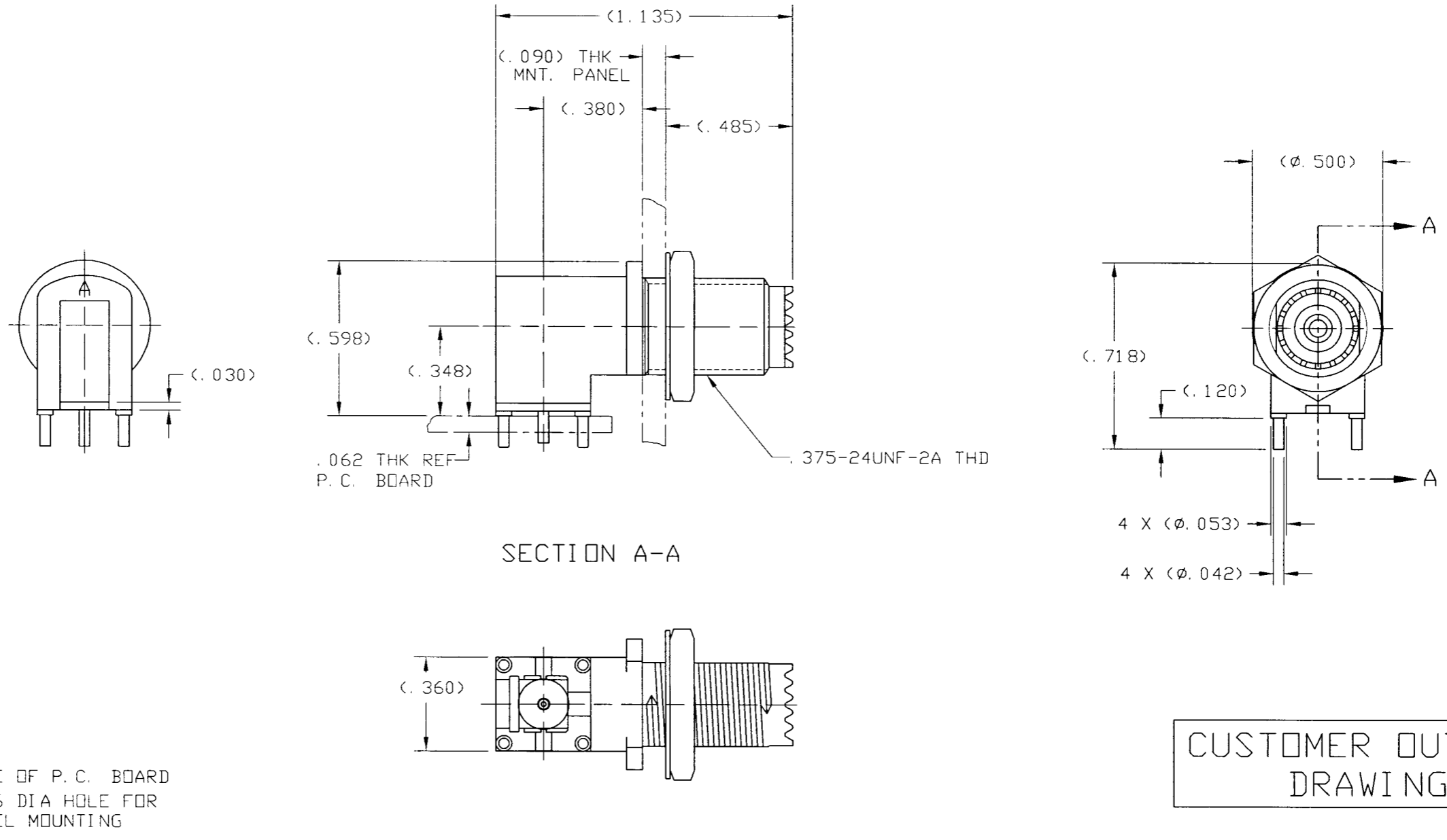


NOTES:

- MATERIALS OF CONSTRUCTION:  
 BODY = ZINC DIE CAST, TIN PLATED  
 CONTACT = PHOSPHOR BRONZE, GOLD PLATED  
 END PLATE = BRASS, NICKEL PLATED  
 HEX NUT = BRASS, TIN PLATED  
 LOCKWASHER = SPRING STEEL, TIN PLATED  
 INSULATOR & SPACER = PTFE  
 INSULATOR = TPX
- PACKAGE CONNECTORS 100 PER BOX.
- DO NOT SCALE THIS DRAWING.

81-119-1010		REVISIONS		
DRAWING NO.	REV	DESCRIPTION	DATE	ECO
THIRD ANGLE PROJ.	A	RELEASE TO MFG.	1/6/00	43219
				APPR CPM



UNLESS OTHERWISE SPECIFIED, DIMENSIONS ARE IN INCHES AND TOLERANCES ARE:  
 2 PLACE DECIMAL ±.015 (0,381 mm)  
 3 PLACE DECIMAL ±.005 (0,127 mm)  
 ANGLES ± 1°

NOTICE - These drawings, specifications, or other data (1) are, and remain the property of Amphenol Corp. (2) must be returned upon request; and (3) are confidential and not to be disclosed to any person other than those to whom they are given by Amphenol Corp. The furnishing of these drawings, specifications, or other data by Amphenol Corp., or to any other person to anyone for any purpose is not to be regarded by implication or otherwise in any manner licensing, granting rights or permitting such holder or any other person to manufacture, use or sell any product, process or design, patented or otherwise, that may in any way be related to or disclosed by said drawings, specifications, or other data.

MATERIAL	
REFERENCE	EAR 967438-0

DRAWN	C. McGRATH	DATE	1/5/00
ENGINEER	T. AUBIN	DATE	1/5/00
APPROVED	<i>[Signature]</i>	DATE	1/6/00
CAD FILE	H:\DEPT611\MUHF\081\ASSY\119\1010SH2		

TITLE	MINI UHF FOR P.C. PANEL MOUNT		
CODE ID	74868	DWG SIZE	B
DRAWING NO.	81-119-1010		

Amphenol	
Amphenol Corporation RF/Microwave Operations Danbury, Conn. U.S.A. 06810	
SCALE: 2:1	SHEET 2 OF 2
REV	A