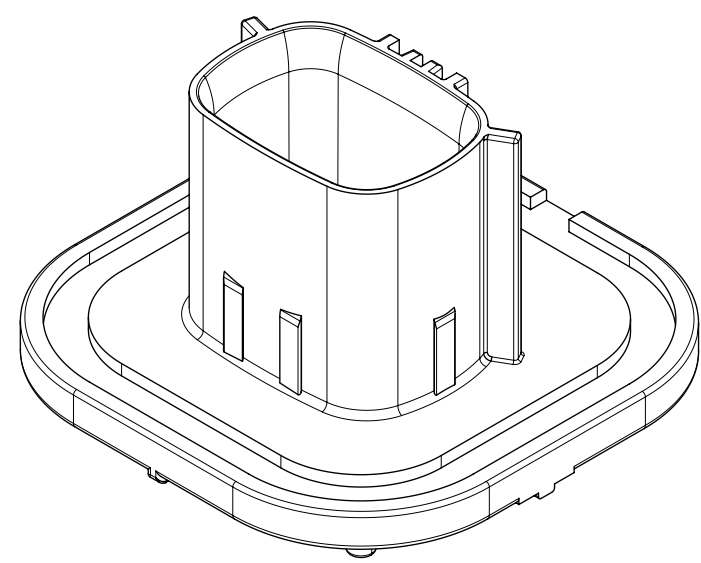


TABLE OF CONTENTS	
SHEET NO.	SHEET DESCRIPTION
1	NOTES, BOM & ISOMETRIC VIEW
2	CONFIGURATIONS
3	CONNECTOR INTERFACE
4	RECOMMENDED PCB LAYOUT

PART NUMBER TABLE					
CUSTOMER PART NUMBER	MOLEX PART NUMBER	DESCRIPTION	CIRCUIT SIZE	COLOR	STATUS
PH50227792	348580006	12CKT VERTICAL SEALED HEADER - KEY A	2X6	BLACK	OK TO TOOL
PH50227793	348580106	12CKT VERTICAL SEALED HEADER - KEY B	2X6	GREY	OK TO TOOL
PH50227794	348580206	12CKT VERTICAL SEALED HEADER - KEY C	2X6	BROWN	OK TO TOOL
PH50227795	348580306	12CKT VERTICAL SEALED HEADER - KEY D	2X6	GREEN	OK TO TOOL
PH50227792	348580016	12CKT VERTICAL SEALED HEADER - KEY A SHORT TAIL	2X6	BLACK	OK TO TOOL
PH50227793	348580116	12CKT VERTICAL SEALED HEADER - KEY B SHORT TAIL	2X6	GREY	OK TO TOOL
PH50227794	348580216	12CKT VERTICAL SEALED HEADER - KEY C SHORT TAIL	2X6	BROWN	OK TO TOOL
PH50227795	348580316	12CKT VERTICAL SEALED HEADER - KEY D SHORT TAIL	2X6	GREEN	OK TO TOOL



NOTES: VALID UNLESS OTHERWISE SPECIFIED

1. GENERAL:

- a. APPLICATION SPECIFICATION SEE: AS-111149-001
- b. PRODUCT SPECIFICATION SEE: PS-111149-001
- c. PACKAGING SPECIFICATION PER MOLEX DRAWING: PK-34858-001
- d. PARTS MUST BE IN COMPLIANCE TO MOLEX CHEMICAL SUBSTANCES FOR PRODUCTS AND PACKAGING SPECIFICATION: QEHS-699000-300
- e. DATA MUST BE SUBMITTED UNDER THE MOLEX PART NUMBER TO IMDS (COMPANY ID#13255)
- f. PCB TO BE FR4 .062" (1.57mm) THICK
- g. MATING CONNECTOR MINIMUM CLEARANCE: REGION TO REMAIN CLEAR OF MODULE COMPONENTS, ADHESIVE, DEBRIS, ETC.

2. DESIGN - MATERIALS:

- a. HEADER HOUSING: SPS GF30
- b. TERMINALS - COPPER ALLOY
OVERMOLDING: LCP GF30
MATE-SIDE PLATING: SELECTIVE GOLD OVER NICKEL
PCB-SIDE PLATING: TIN OVER NICKEL
- c. BISCUIT: SPS GF30
- d. SHIELDS - COPPER ALLOY
PLATING (OVERALL): TIN OVER NICKEL

3. DESIGN - GEOMETRY:

- a. GEOMETRIC DIMENSIONS AND TOLERANCES PER ASME Y14.5M-2009
- b. EDGES AND UNDIMENSIONED DETAILS PER ISO13715
- c. CORNERS SHOWN AS SHARP TO BE R 0.2 MAX.

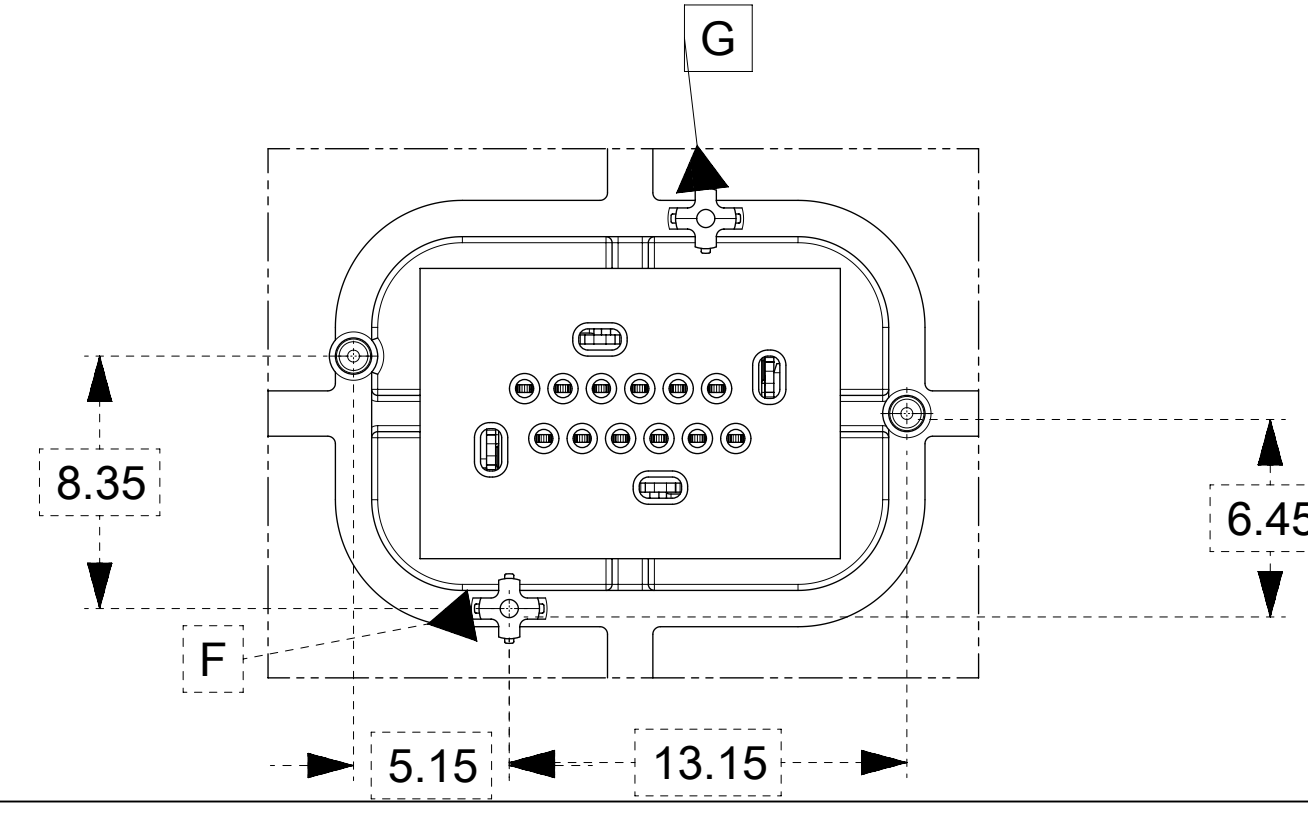
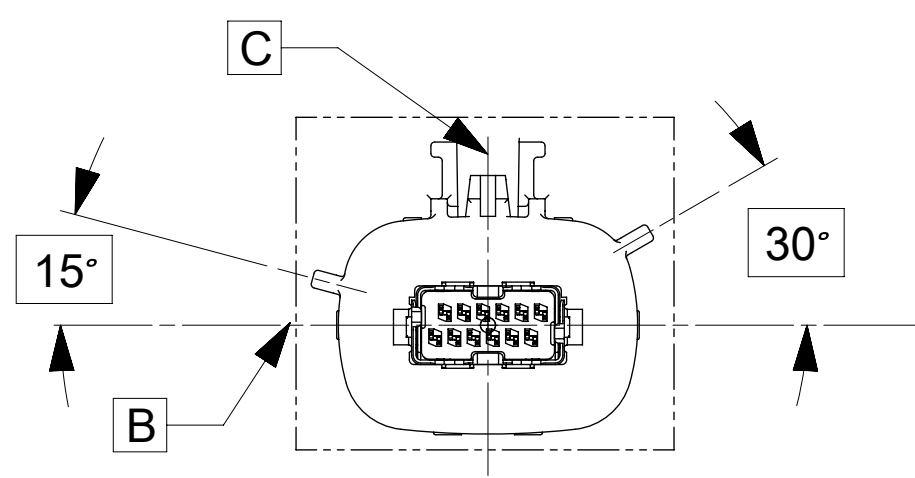
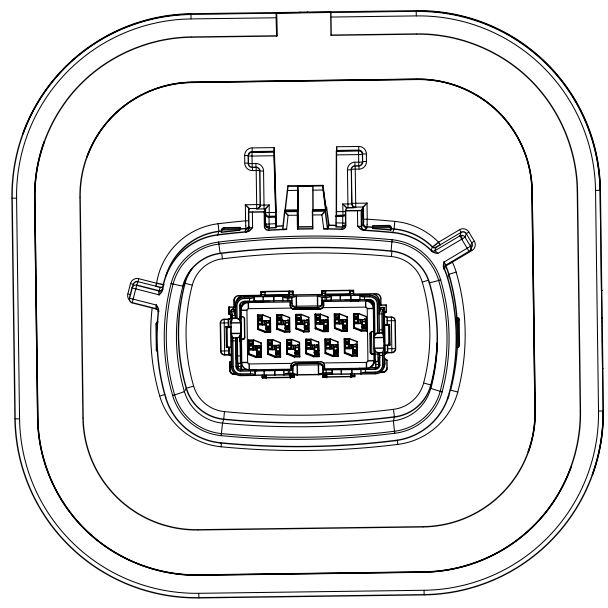
4. LASER MARKING TO BE MARKED WITH:

- HUMAN READABLE CODE (HRC)
- PERMANENTLY APPLIED ON THE PART WITH 1.5mm LETTER SIZE
- 5 DIGIT JULIAN MANUFACTURING DATE STAMP YYDDD

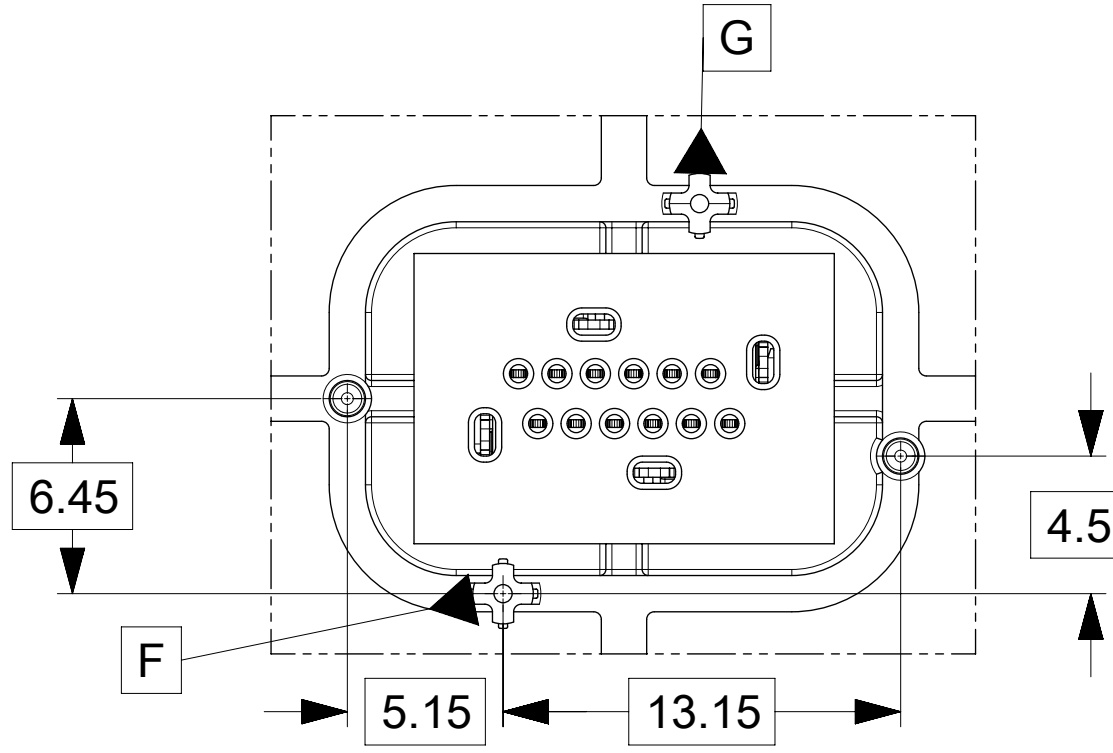
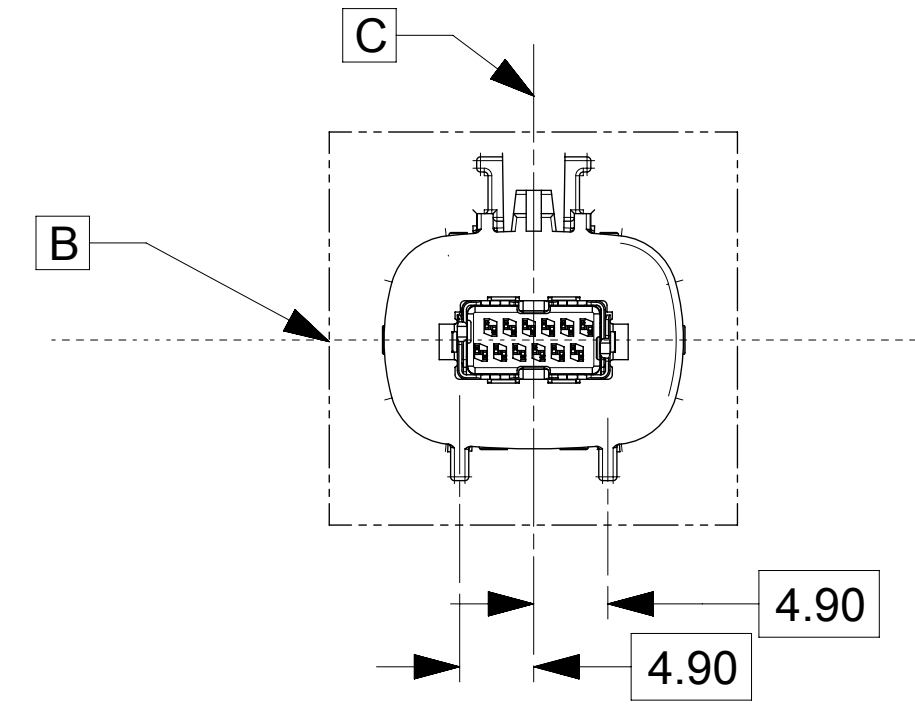
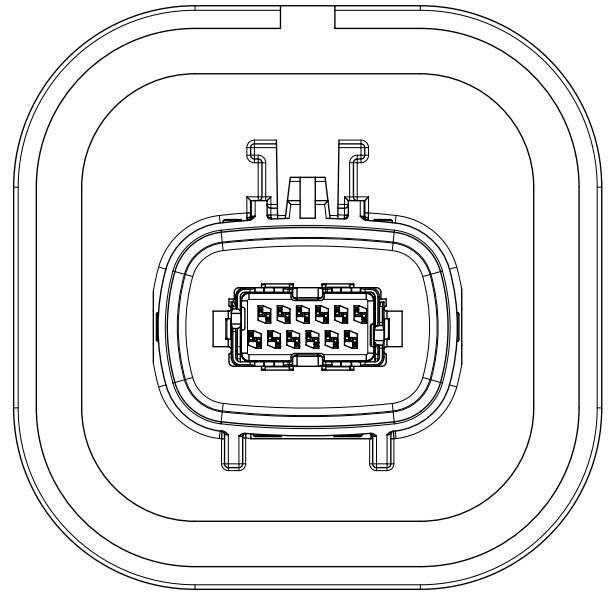
A5	UPDATE TITLEBLOCK TO FIX ECTR ISSUE
A4	ADD TABLE TO DIM 7
A3	CORRECT TOL ON DIM 7
A2	MIGRATION TO ECTR/NX
A1	DRAWING UPDATE
A	OK TO TOOL RELEASE

SYMBOLS	THIS DRAWING CONTAINS INFORMATION THAT IS PROPRIETARY TO MOLEX ELECTRONIC TECHNOLOGIES, LLC AND SHOULD NOT BE USED WITHOUT WRITTEN PERMISSION		CURRENT REV DESC: CORRECT ECTR ERROR		
	DIMENSION UNITS	SCALE	EC NO: 604086		
▽ = 0	mm		DRWN: DGILKEY 2018/09/06		12 CKT HSAUTOLINK II VERT SEALED HEADER ASSEMBLY
▽ = 0	GENERAL TOLERANCES (UNLESS SPECIFIED)		CHK'D: DNAYLIS 2018/09/06		
▽ = 0	ANGULAR TOL ± 1.0°		APPR: DNAYLIS 2018/09/06		PRODUCT CUSTOMER DRAWING
▽ = 0	4 PLACES ±		INITIAL REVISION:		
▽ = 0	3 PLACES ±		DRWN: KPATRA 2017/02/07		DOCUMENT NUMBER SD-34858-002
▽ = 0	2 PLACES ± 0.13		APPR: DNAYLIS 2018/01/03		
▽ = 0	1 PLACE ± 0.25		DRAFT WHERE APPLICABLE MUST REMAIN WITHIN DIMENSIONS		DOC TYPE PSD
▽ = 0	0 PLACES ±		THIRD ANGLE PROJECTION	DRAWING D-SIZE	DOC PART 000
▽ = 0			SERIES 34858	MATERIAL NUMBER SEE CHART	REVISION A5
▽ = 0			CUSTOMER GENERAL MARKET	SHEET NUMBER 1 OF 4	

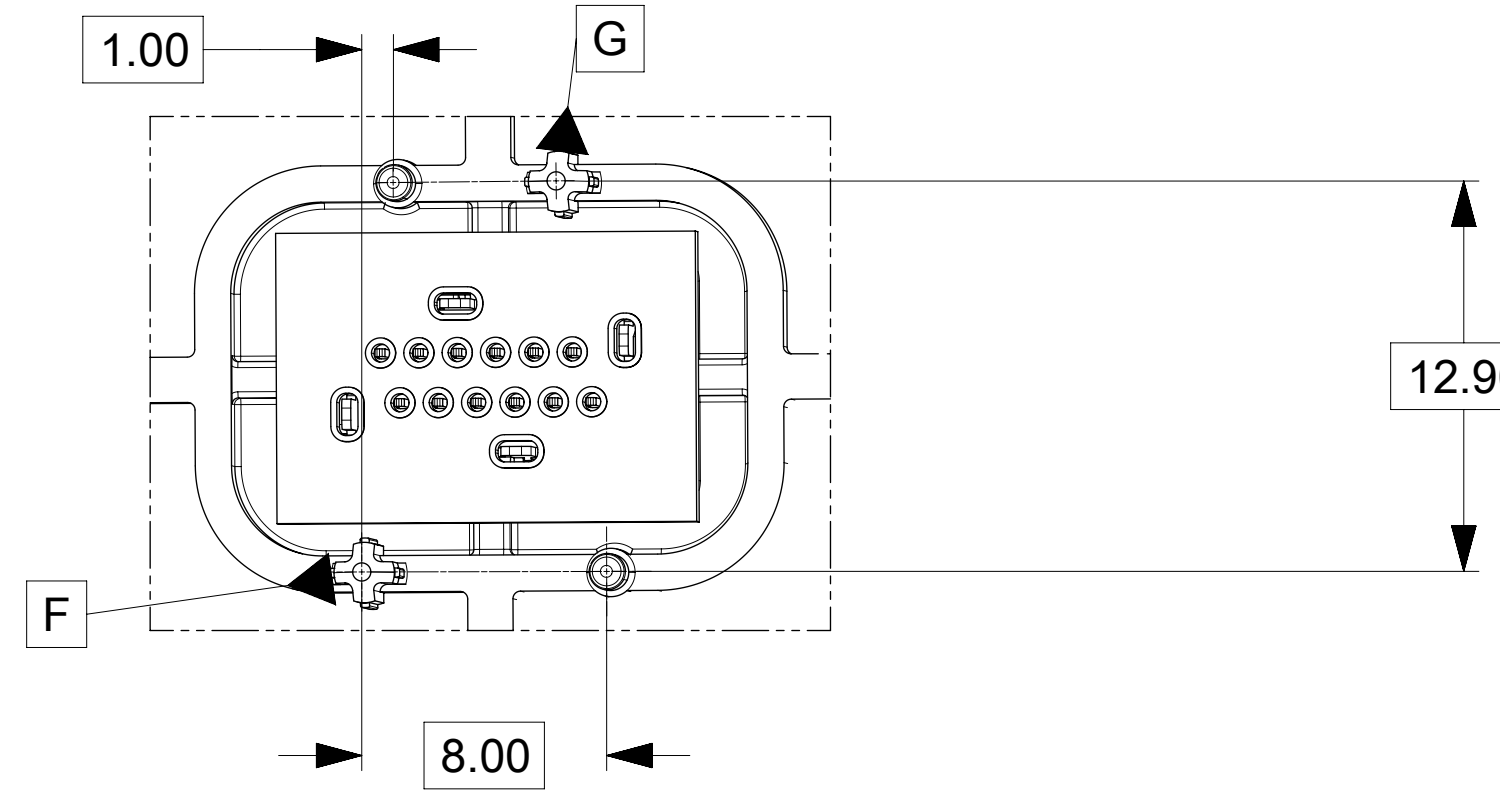
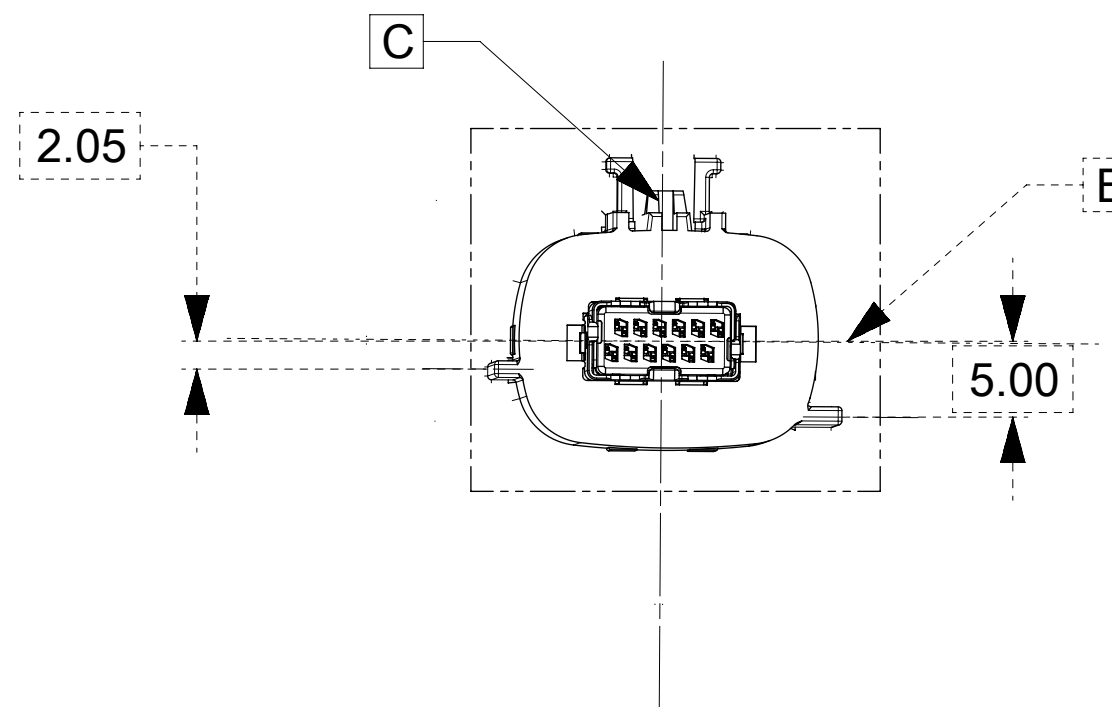
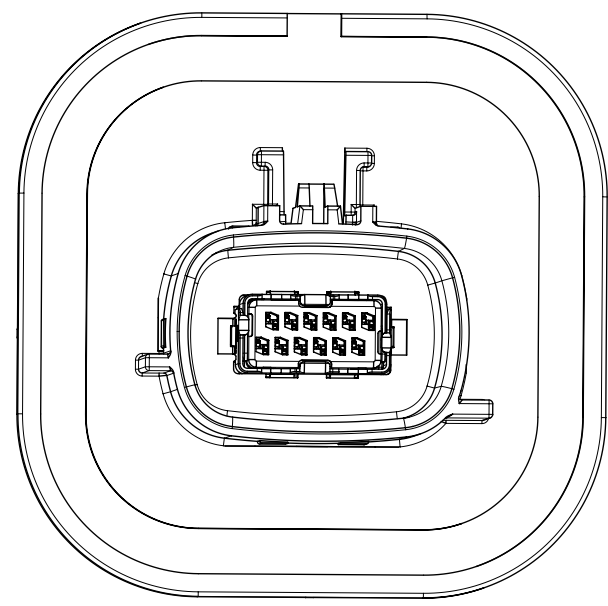
P/N: 34858-00X6
KEY A



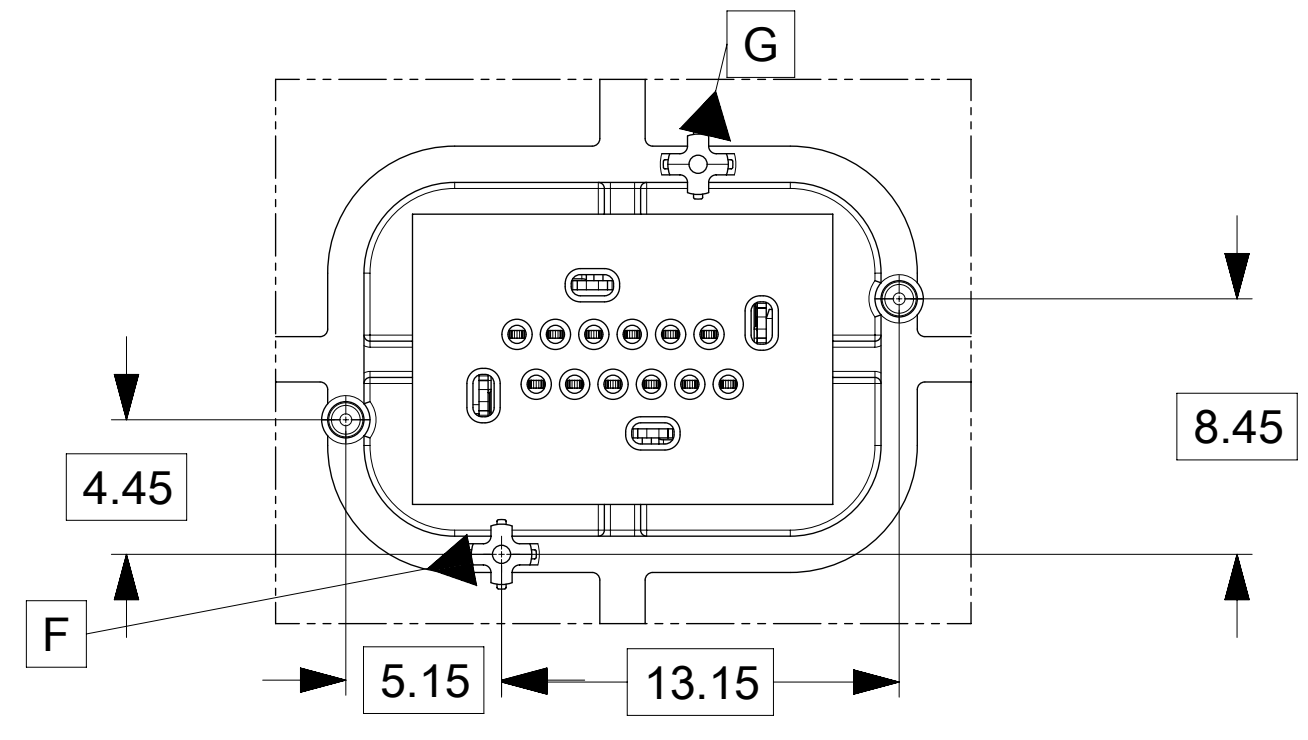
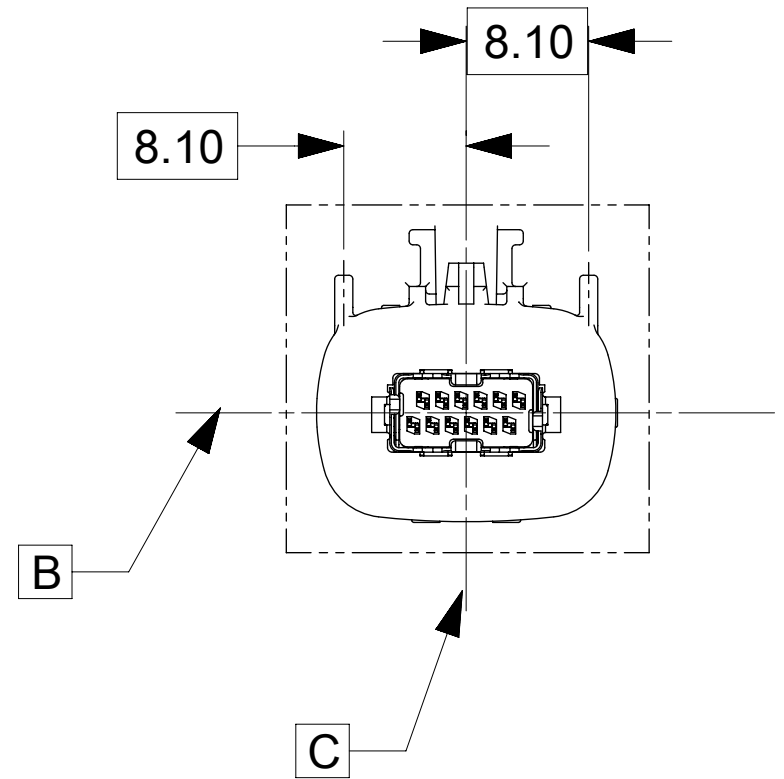
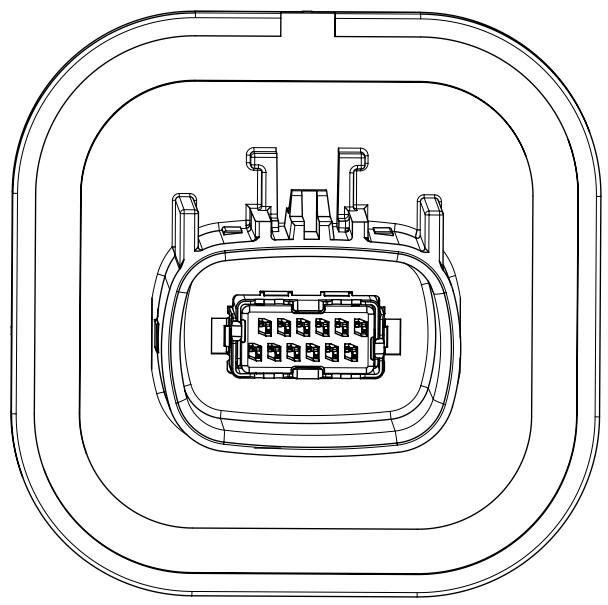
P/N: 34858-01X6
KEY B



P/N: 34858-02X6
KEY C



P/N: 34858-03X6
KEY D



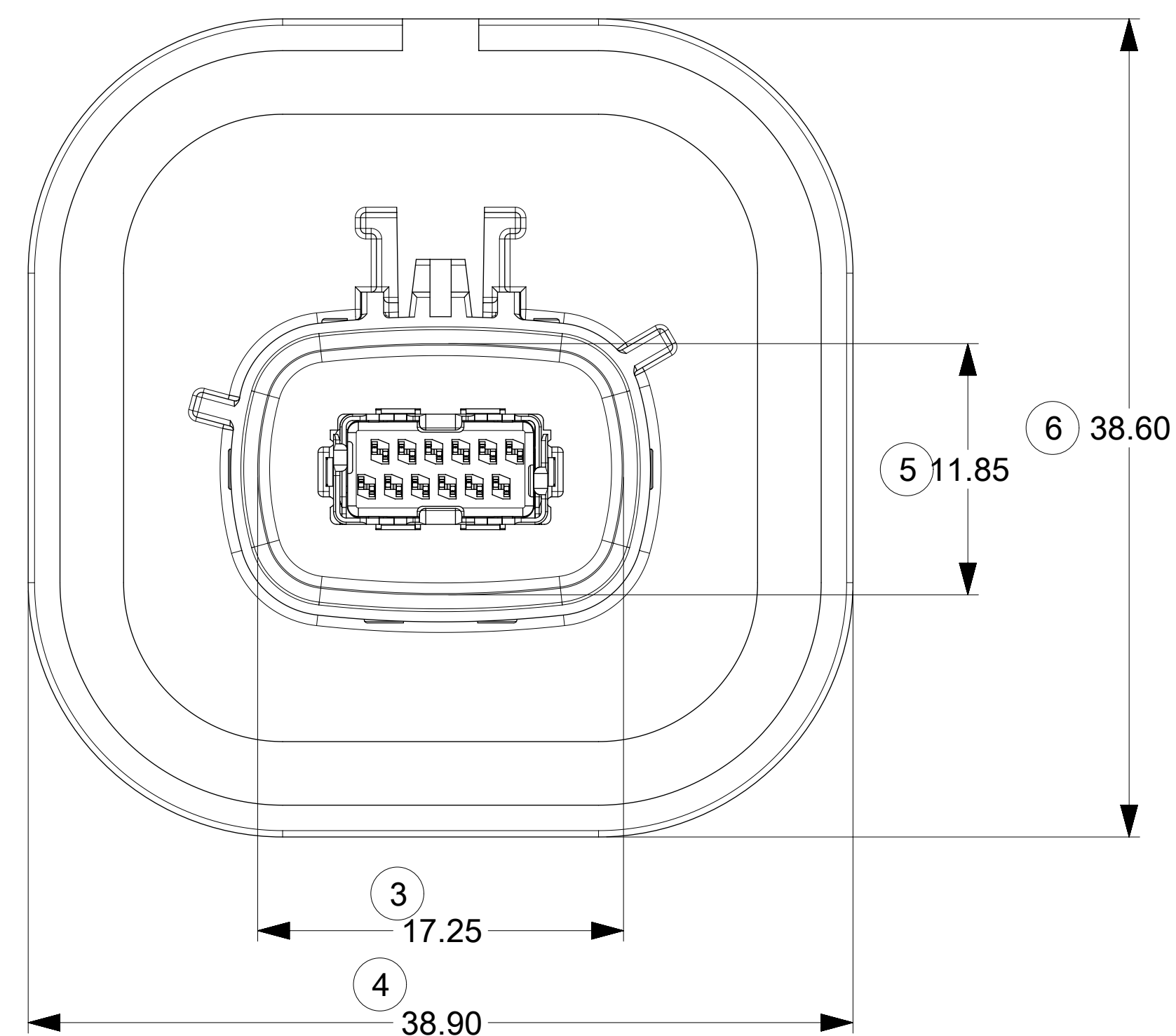
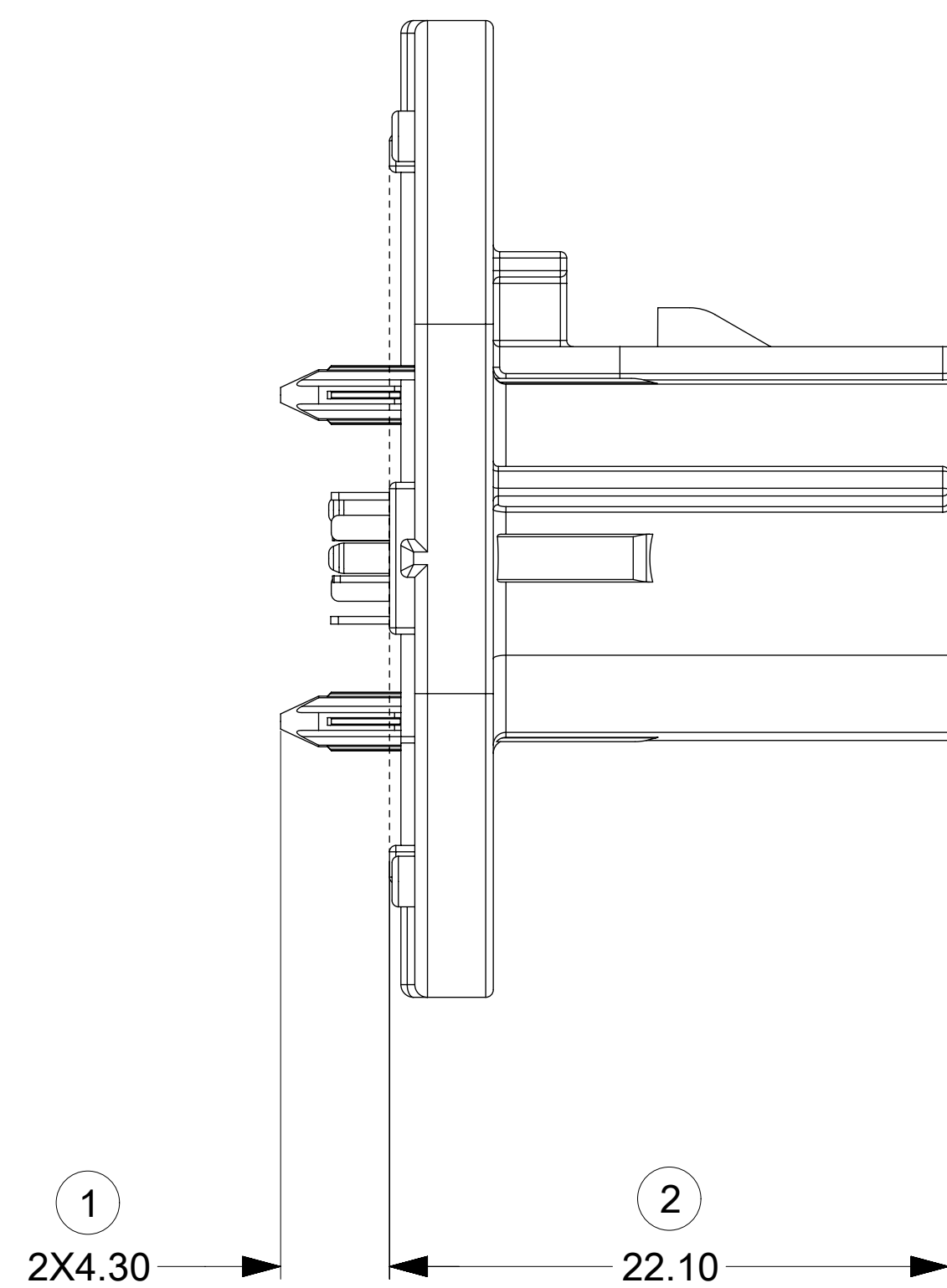
SHEET DESCRIPTION
CONFIGURATIONS

MATE INTERFACE
KEY OPTIONS

PCB INTERFACE
KEY OPTIONS

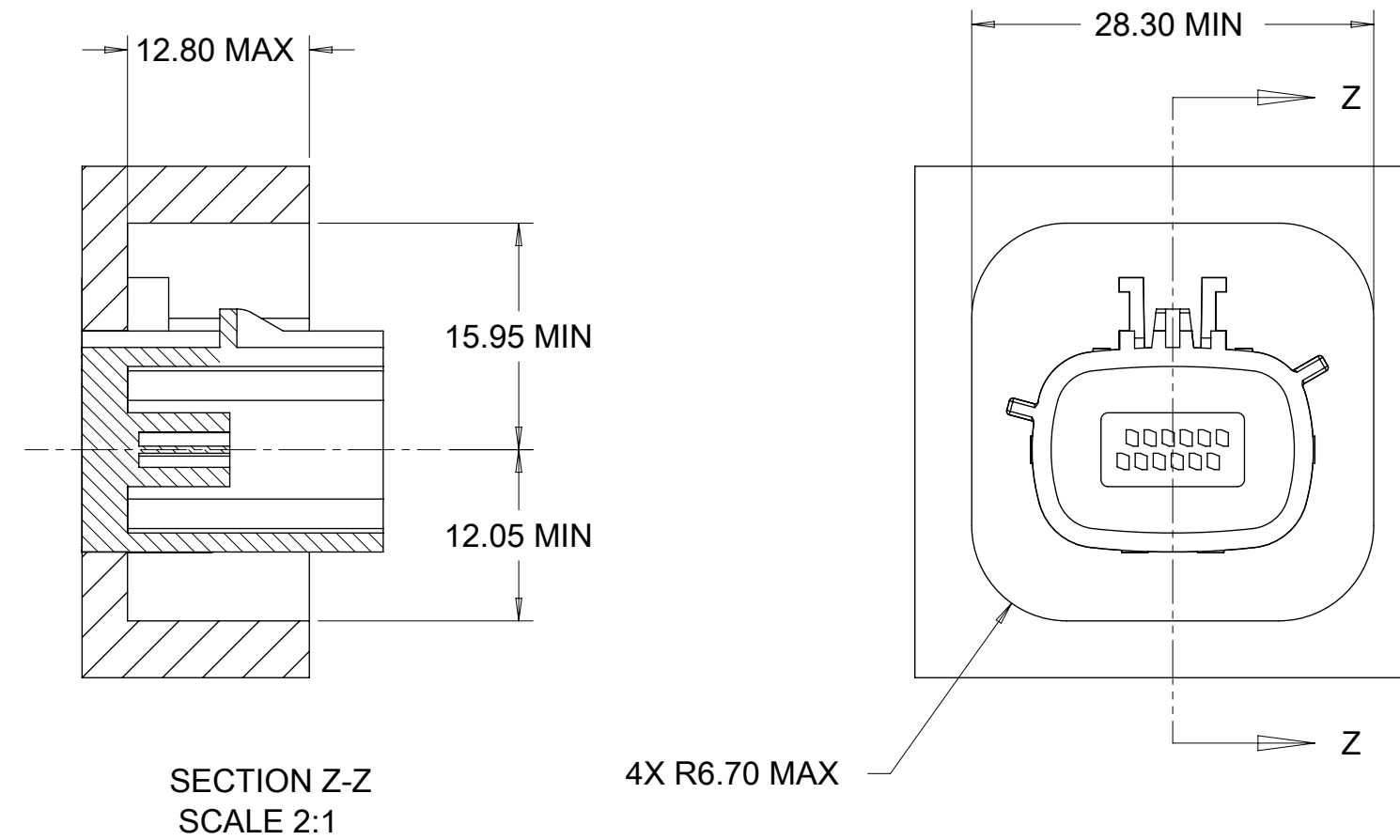
SYMBOLS	THIS DRAWING CONTAINS INFORMATION THAT IS PROPRIETARY TO MOLEX ELECTRONIC TECHNOLOGIES, LLC AND SHOULD NOT BE USED WITHOUT WRITTEN PERMISSION		CURRENT REV DESC: CORRECT ECTR ERROR		molex	
	DIMENSION UNITS	SCALE				
▽ = 0	mm		EC NO: 604086		12 CKT HSAUTOLINK II	
▽ = 0	GENERAL TOLERANCES (UNLESS SPECIFIED)		DRWN: DGILKEY 2018/09/06		VERT SEALED HEADER ASSEMBLY	
▽ = 0	ANGULAR TOL ± 1.0°		CHK'D: DNAYLIS 2018/09/06		PRODUCT CUSTOMER DRAWING	
▽ = 0	4 PLACES ±		APPR: DNAYLIS 2018/09/06		DOCUMENT NUMBER	
▽ = 0	3 PLACES ±		INITIAL REVISION:		DOC TYPE	
▽ = 0	2 PLACES ± 0.13		DRWN: KPATRA 2017/02/07		DOC PART	
▽ = 0	1 PLACE ± 0.25		APPR: DNAYLIS 2018/01/03		REVISION	
▽ = 0	0 PLACES ±		DRAFT WHERE APPLICABLE MUST REMAIN WITHIN DIMENSIONS		SD-34858-002	
⊠ = 0			THIRD ANGLE PROJECTION		PSD 000 A5	
■ = 0			DRAWING		MATERIAL NUMBER	
▽ = 0			SERIES		CUSTOMER	
			D-SIZE 34858		SEE CHART	
					GENERAL MARKET	
					SHEET NUMBER	
					2 OF 4	

SHEET DESCRIPTION
CONNECTOR INTERFACE

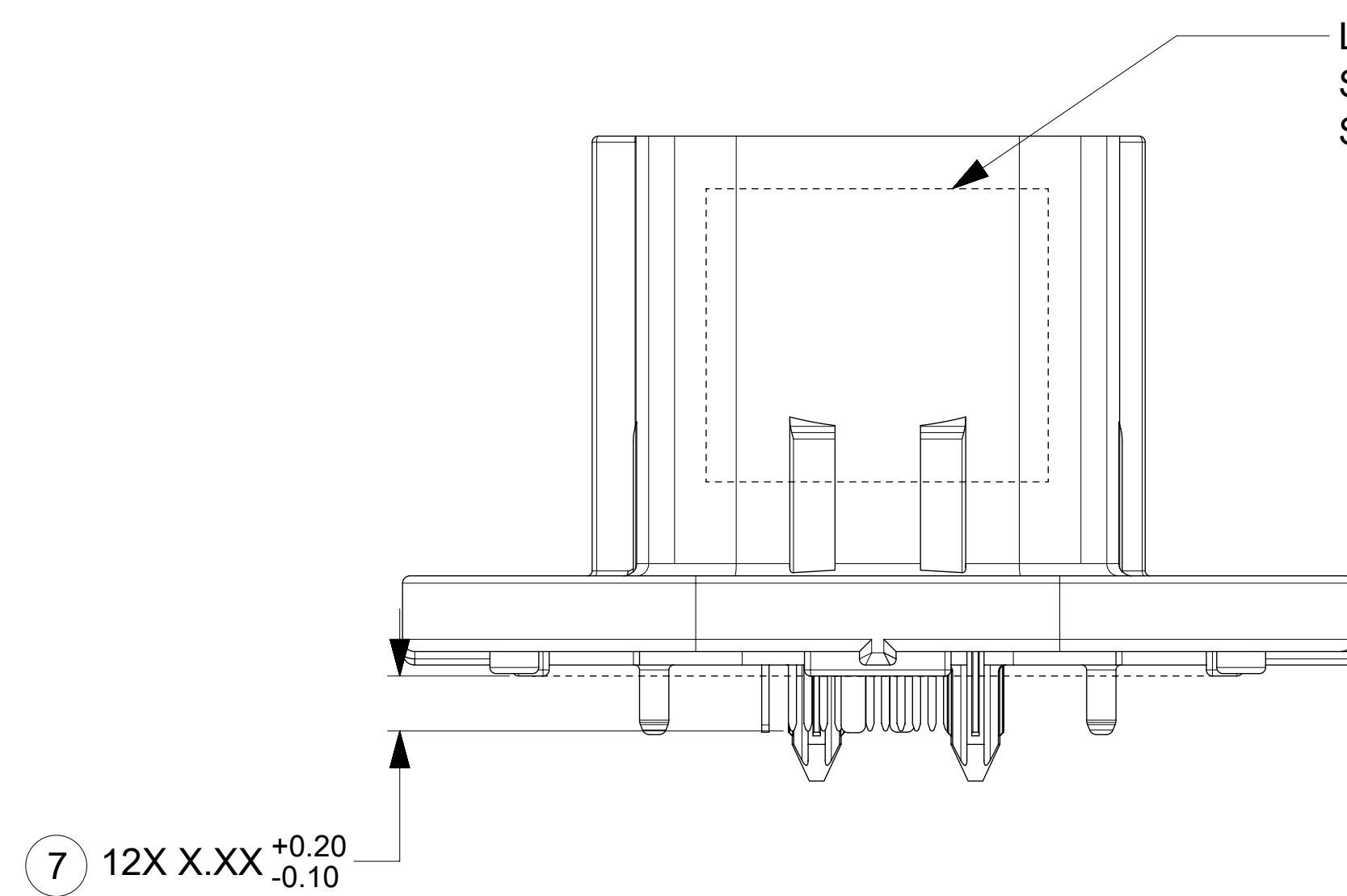


MATING HARNESS CONNECTOR KEEP OUT REGION

IF HEADER IS RECESSED INTO A POCKET, THESE DIMENSIONS REPRESENT THE MINIMUM CLEARANCE REQUIRED FOR THE MATING CONNECTOR SHROUD. SEE NOTE 1g.



LASER MARKING TO BE SHOWN IN THIS LOCATION. SEE NOTE 5.



DIM 7	
PART NUMBER	VALUE
34858-0X06	2.25
34858-0X16	1.75

SYMBOLS	THIS DRAWING CONTAINS INFORMATION THAT IS PROPRIETARY TO MOLEX ELECTRONIC TECHNOLOGIES, LLC AND SHOULD NOT BE USED WITHOUT WRITTEN PERMISSION		CURRENT REV DESC: CORRECT ECTR ERROR				
	DIMENSION UNITS	SCALE					
▽ = 0	mm		EC NO: 604086		12 CKT HSAUTOLINK II VERT SEALED HEADER ASSEMBLY		
▽ = 0	GENERAL TOLERANCES (UNLESS SPECIFIED)		DRWN: DGILKEY 2018/09/06		PRODUCT CUSTOMER DRAWING		
▽ = 0	ANGULAR TOL ± 1.0°		CHK'D: DNAYLIS 2018/09/06		DOCUMENT NUMBER		
▽ = 0	4 PLACES ±		APPR: DNAYLIS 2018/09/06		DOC TYPE		
▽ = 0	3 PLACES ±		INITIAL REVISION:		DOC PART		
▽ = 0	2 PLACES ± 0.13		DRWN: KPATRA 2017/02/07		REVISION		
▽ = 0	1 PLACE ± 0.25		APPR: DNAYLIS 2018/01/03		SD-34858-002		
▽ = 0	0 PLACES ±		DRAFT WHERE APPLICABLE MUST REMAIN WITHIN DIMENSIONS		PSD 000 A5		
⊠ = 0	THIRD ANGLE PROJECTION		DRAWING		MATERIAL NUMBER		
■ = 0	D-DRAWING		SERIES		CUSTOMER		
▽ = 0	D-DRAWING		34858		SHEET NUMBER		
					SEE CHART		
					GENERAL MARKET		
					3 OF 4		

