

JANUS REMOTE COMMUNICATIONS

LTE910CF v20.00 CAT-M1/NB2 Embedded 4G Cellular Embedded Modem

Description

The Janus line of Common Footprint (CF) embedded modems are footprint compatible, cellular devices for use in LTE communication networks. They were specifically designed to provide customers with cost effective modules that are easily integrated into new and existing designs.

The LTE910CF v20.00 CAT-M1/NB2 embedded modem uses the Telit ME910G1-WW as its cellular engine and has global PTCRB, AT&T, Verizon and RED certifications. The LTE910CF v20.00 units operate in CAT-M1/NB2 LTE 4G and 2G bands.

LTE910CF CAT-M1/NB2 Specifications

- Approvals
 - Regulatory: FCC, ISED, PTCRB
 - Carrier: PTCRB, AT&T, Verizon and RED certifications;
- Data Rate:
 - LTE Cat M1 (Rel. 14)
 - Uplink up to 1 Mbps
 - Downlink up to 588 Kbps
 - LTE Cat NB2 (Rel. 14)
 - Uplink up to 160 Kbps
 - Downlink up to 120 Kbps
 - EGPRS (2G Fallback variants)
 - Uplink up to 210 Kbps
 - Downlink up to 264 Kbps
- V20.00 Frequency bands
 - LTE 4G Bands: B1, B2, B3, B4, B5, B8, B12, B13, B18, B19, B20, B25, B26, B27, B28, B66, B71, B85
 - LTE 2G Bands: B2, B3, B5, B8
- TCP/IP stack access via AT commands
- SMS (MO / MT)
- Output power: Class 3 (0.2W, 23 dBm) @ LTE
- Dimensions: 2.5" x 1.4" x 0.325"
- Operational temperature range: -40°C to 85°C
- Internal Switching Regulator:
 - Input Voltage Range: 4.75 to 5.25Vdc (5Vdc nominal)
 - Supply disable via terminal input pin
- Variable logic level (UART/GPIO)
 - Adjustable from 1.8 - 5.0Vdc
 - Defaults to 2.85v
- SIM Card
 - Locking SIM card socket, Micro (3FF size) SIM
- Antenna:
 - Cellular and GNSS antennas
 - U.FL miniature RF connectors
- GNSS
 - Stand alone GPS and GLONASS available at AT command interface
 - A-GPS support
 - NMEA data
 - GNSS antenna connection w/active antenna support



The LTE910CF v20.00 modems are part of the CellBridge™ Janus Products.

CellBridge™
Global Cellular Modem Solutions

Applications

Suitable for all M2M Applications

- Fleet Management
- Asset Tracking
- Security Systems
- Telemetry
- Telematics & Telecontrol
- Remote Monitoring Systems
- Remote Meter Reading
- Vending Machines

Telit OneEdge® Availability

Telit offers ME910G1 with OneEdge, a software suite integrated with deployment and management tools to address the complexity expected with the exponential growth in the number of IoT devices. The following components include:

- **Lightweight M2M protocol** enables comprehensive device management, FOTA updates and application enablement of low-power devices with the goal of more robust and secure connections.
- **Telit simWISE™**, a module-embedded SIM technology, enables reduced footprint, streamlined manufacturing and logistics, secure communications for connected devices.
- **Telit IoT AppZone** can run code and applications directly inside the Telit module.
- **Telit's Connection Manager** automates operations for connection to cellular networks.
- **Location services** provide the position of devices even in the absence of a GNSS connection.

Telit ONEEDGE™



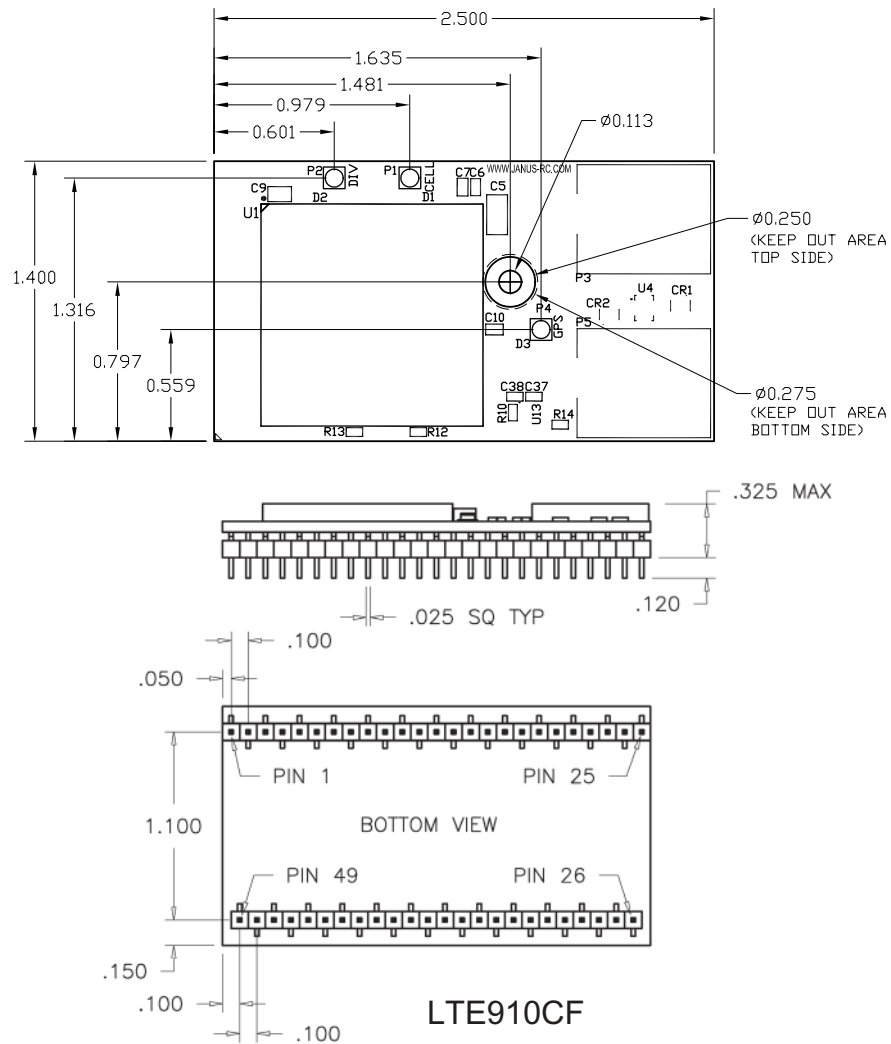
Making machines talk.

P
R
O
D
U
C
T
B
R
I
E
F

2359 Diehl Road
Aurora, IL 60502
630.499.2121
info@janus-rc.com
www.janus-rc.com

Bulletin **JA03-PB_LTE-v20.00**
Revision **04**
Date **14 March 2023**

LTE910CF v20.00 CAT-M1/NB2 CF Embedded Modem Mechanical Drawings



Ordering Information

LTE910CF	V2000	T	x	H	3	L
Cellular Terminal LTE LTE910CF	Carrier Certified & Version LTE v20.00 CAT-M1	Modem Provider T = Telit	Firmware * Call Sales Rep for most recent firmware version.	SIM Holder H = Mech Holder	SIM Size 3 = 3FF Micro size	Power S = Standard Power L = Low Power

Example: Part Number – LTE910CFV2000TxH3L = LTE Cellular Embedded Modem; Telit Modem; Current Firmware; Mech SIM Holder; SIM Size Card 3FF Micro; Low Power.

Contact Sales for Additional Special Order Options: Bill Borton: bborton@janus-rc.com | 630-499-2121

Revision History

Revision	Revision Date	Note
00	04/22/20	Initial Product Brief
01	11/03/20	Updated SIM Card Information
02	12/09/21	Updated Certification Approvals
03	02/01/22	Edited copy
04	03/14/23	Updated Contact Information

JANUS REMOTE
COMMUNICATIONS

Division of The Connor-Winfield Corporation

2111 Comprehensive Dr. • Aurora, IL 60505
630.499.2121 • info@janus-rc.com

www.janus-rc.com

CellBridge™
Global Cellular Modem Solutions

© Copyright 2023 Janus Remote Communications | Specifications subject to change without notice.
All Rights Reserved | See website for latest revision. | Not intended for life support applications.