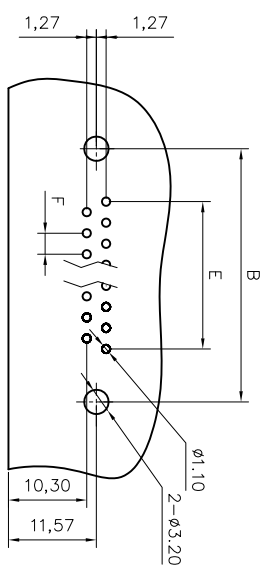
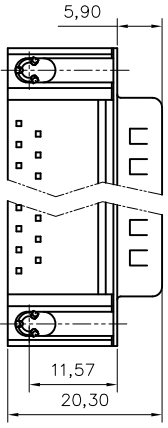
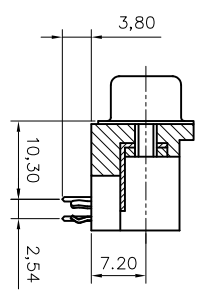
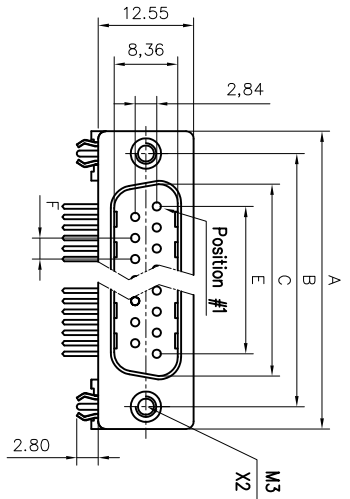


This document is the property of Amphenol Corporation and is addressed on this specific condition that it is not to be disclosed, reproduced or used, in any form, without the prior written consent of Amphenol Corporation. Amphenol Corporation will not be held responsible for any information in this document or to use any information in this document.



RECOMMENDED P.C.B. LAYOUT
(TOLERANCE +/-0.03)



Customer drawing

Nb of contacts	Dimensions				
	A	B	C	E	F
9	30.89	24.99	16.92	10.96	2.77
15	39.10	33.32	25.25	19.18	2.77
25	53.09	47.04	38.96	33.24	2.77
37	69.40	63.50	55.42	49.86	2.77

REVISONS		DATE	APPROVED
1	SMI EON	11/18/10	

D-SUB TECHNICAL DATA

SHELL : Steel, 2.5um(100u") min. tin over 1.25um(50u") min. nickel
BODY : Glass filled thermoplastic.
 Flame retardant to UL94 V-0 Color Black

CONTACTS : Brass
 0.76um(30u") min. gold over 1.25um(50u") min nickel in mating area,
 2.54um(100u") min. tin over 1.25um(50u") min. nickel on termination area

REAR INSERT : Brass,100u" min. tin over 50u" min. nickel

BOARDLOCK : Brass,100u" min. tin over 50u" min. nickel

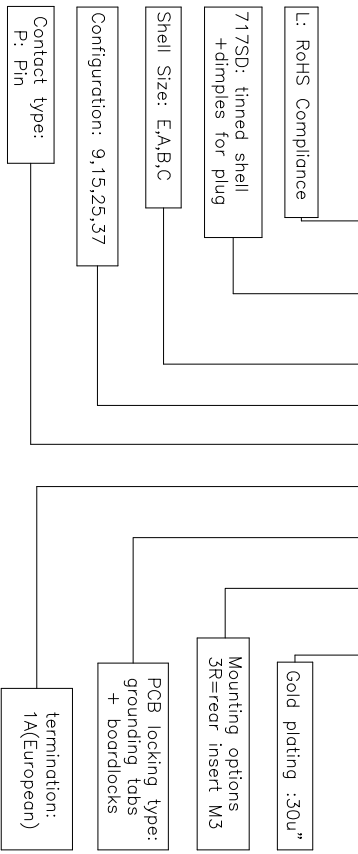
ELECTRICAL : Voltage rating: 250 V RMS at 50 Hz
 Current rating: 5A per contact
 Withstanding Voltage >1000 V RMS at 50 Hz for one minute
 Insulation resistance >5000 M Ohms
 Contact resistance 20 mOhms max.

CLIMATIC : Temperature range -55 °C up to 125°C

MARKING : Amphenol-...(Series No.)
 Manufacturing date
 Commercial reference

PRODUCT CODE

L 717SD XXX P 1A CH 3R C309



DIMENSIONS SPECIFIED	
TOLERANCES	METRIC
U.S.	0.50
XX	0.30
XXX	0.20
ANGLES	2°

FOR MATERIALS AND FINISHES	
REMOVE SHARP EDGES	2°
DIMENSIONS	MIN
FINISHES	MIN

APPROVAL		DATE
DESIGN	Rev No.	11/18/10
CHECKED	146.4000g	11/18/10

Amphenol

D-SUB contacts , SD series

SIZE DRAWING NO.		REV.
A4	C L717SDXXXPPACH3RC309	1
SCALE	NONE	SHEET 1 OF 1