

## 3 x 5" 500W AC-DC Power Supplies

<https://product.tdk.com/en/power/cus-m>  
[www.emea.lambda.tdk.com/cus500m](http://www.emea.lambda.tdk.com/cus500m)



Medical



Industrial



Test



LED



COMM



Broadcast



The compact CUS500M1 is packaged in the industry standard 3x5" footprint and can deliver 500W when forced air cooled or 300W convection cooled with a 500W peak. Certified to Medical & ITE safety standards, the CUS500M1 can be used in both Class I & Class II (no ground wire) applications<sup>(1)</sup>. An enclosed model (/EF suffix) is available with an internal fan.

Features	Benefits
• 300W (500W Peak) Convection Cooled	• Quiet Operation
• 500W with Forced Air	• Can Utilize System Airflow or Integrated Fan
• Medical Certifications (2 x MOPP)	• Suitable for B and BF Type Medical Equipment
• Class B Conducted and Radiated EMI	• Easier System EMC Compliance
• Suitable for Class I and Class II installations <sup>(1)</sup>	• Flexible Utilization
• Compact 3 x 5 x 1.46" Size	• Space Saving in End Equipment
• Enclosure and end fan models	• Versatile Application

Model Selector							
Model	Nominal Output Voltage (V)	Output Adjustment (V)	Maximum Current Convection (A)	Maximum Current Forced Air (A)	Peak Current (A)	Maximum Power Convection (W)	Maximum Power Forced Air (W)
CUS500M1-12	12	None	25.0	41.7	41.7	300	500.4
CUS500M1-19	19	None	15.8	26.4	26.4	300.2	501.6
CUS500M1-24	24	None	12.5	20.9	20.9	300	501.6
CUS500M1-28	28	None	10.7	17.9	17.9	299.6	501.2
CUS500M1-32	32	None	9.4	15.7	15.7	300.8	502.4
CUS500M1-36	36	None	8.3	13.9	13.9	298.8	500.4
CUS500M1-48	48	None	6.3	10.5	10.5	302.4	504.0

<b>CUS500M1-</b>	<b>12</b>	<b>/</b>	<b>EF</b>
	Output voltage 12, 19, 24, 28, 32, 36, 48		blank Open frame construction /EF Enclosed with end fan (exhaust air)

Other options are available, please contact sales

Specifications		
Model		CUS500M1
<b>Input</b>		
Input Voltage range	Vac	85 - 265 (See derating curves)
Input Frequency	Hz	47 - 63
Input Current (110/230Vac)	A	< 5.0 / 2.5 (500W)
Inrush Current at 230Vac (typ) (Cold Start)	A	<50
Leakage Current	uA	<200 at 265Vac 60Hz
Touch Current (Enclosure Leakage)	uA	<100
Power Factor (115/230Vac)	-	0.99 / 0.94
Harmonic Compliance	-	Meets IEC61000-3-2 Class A
No Load Power Consumption	W	-
Hold Up Time (typ) at 115Vac Input	ms	22 at 300W load, 14 at 500W load
Efficiency	%	Up to 96
Conducted & Radiated EMI (Class I only <sup>(1)</sup> )	-	EN55032/EN55011-B (See installation / instruction manual for conditions)
Immunity (Class I only <sup>(1)</sup> )	-	Compliant with EN60601-1-2:2015 (Ed4), see immunity table
Insulation Class	-	Construction suitable for Class I or Class II installation <sup>(1)</sup>
Safety Agency Certifications	-	IEC/EN/UL62368-1 and 60601-1, ES60601-1, CE Mark (LVD, EMC and RoHS)

Note:

(1) Class II operation may require additional EMC filtering, contact factory for assistance.

Immunity				
Test	Standard	Test Level	Criteria	Notes <sup>(1)</sup>
ESD	EN61000-4-2	4	A	-
Radiated Susceptibility	EN61000-4-3	3	A	Includes proximity field requirements of EN60601-1-2:2015
Electrical Fast Transient Burst	EN61000-4-4	4	A	(AC Port, 5kHz and 100kHz)
Surge	EN61000-4-5	3	A	-
Conducted Susceptibility	EN61000-4-6	3	A	-
Magnetic fields	EN61000-4-8	4	A	-
Voltage Dips and Input Interruptions	EN61000-4-11 Class 3 Industrial, incl EN55024 (100Vac)	0% for 1/2 cycle	A	-
		0% for 1 cycle	A/B	A up to 280W, B above 280W
		40% for 10/12 cycles	A/B	A up to 180W, B above 180W
		70% for 25/30 cycles	A/B	A up to 440W, B above 440W
		80% for 250/300 cycles	A	-
		0% for 250/300 cycles	B	-
	EN61000-4-11 Class 3 Industrial, incl EN55024 (240Vac)	0% for 1/2 cycle	A	-
		0% for 1 cycle	A/B	A up to 280W, B above 280W
		40% for 10/12 cycles	A/B	-
		70% for 25/30 cycles	A	-
		80% for 250/300 cycles	A	-
		0% for 250/300 cycles	B	-
EN60601-1-2:2015 (100Vac)	0% for 1/2 cycle	A	Customer to consider essential performance of end equipment	
	0% for 1 cycle	A/B	A up to 280W, B above 280W	
	70% for 25/30 cycles	A	A up to 440W, B above 440W	
	0% for 250/300 cycles	B	-	
EN60601-1-2:2015 (240Vac)	0% for 1/2 cycle	A	Customer to consider essential performance of end equipment	
	0% for 1 cycle	A/B	A up to 280W, B above 280W	
	70% for 25/30 cycles	A	-	
	0% for 250/300 cycles	B	Customer to consider essential performance of end equipment	
SEMI F47 Line Dip	SEMI F47	-	-	At input voltages > 200Vac

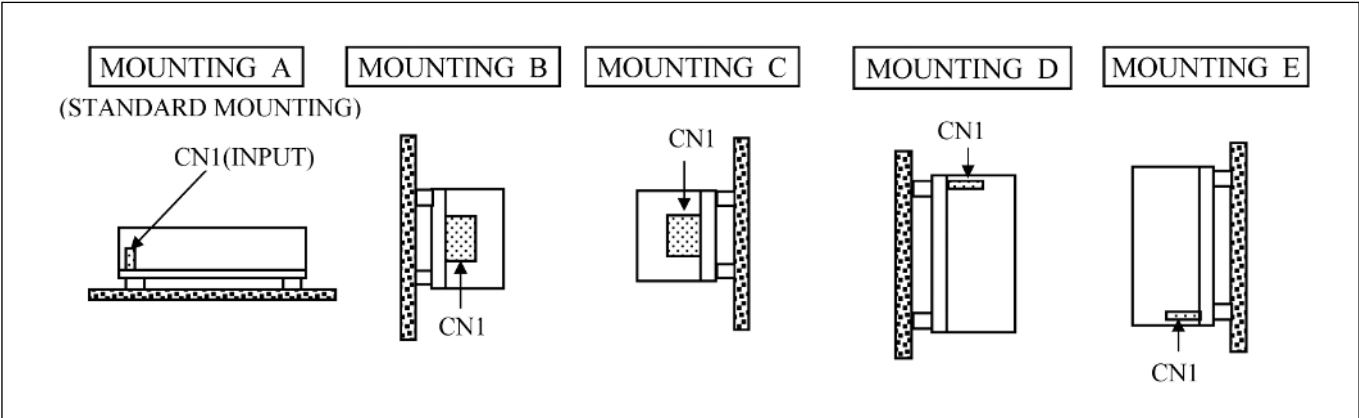
<b>Specifications</b>		
Model		CUS500M1
<b>Output</b>		
Line Regulation	%	0.5 (85 - 265Vac)
Load Regulation	%	1 (0 - 100% load)
Ripple & Noise	mV	12V: 240, 19V - 28V: 360, 32V - 48V: 480
Temperature Coefficient	%/°C	±0.02
Minimum Load	-	No minimum load required
Overcurrent Protection	%	>105. Hiccup mode, automatic recovery
Overvoltage Protection	-	Latching (unit shutdown), cycle AC input to reset
Overtemperature Protection	-	Latching (unit shutdown), cycle AC input to reset
Remote Sense	-	-
Remote On/Off	-	-
Power Good	-	-
Standby Voltage	-	-
Parallel Operation	-	Not possible
Series Operation	-	Possible, see installation manual
<b>Environmental</b>		
Operating Temperature (-25°C start-up)	°C	-20 to +70, see derating curves below
Storage Temperature	°C	-40 to +85
Operating Humidity (non condensing)	%RH	10 - 95
Cooling	-	Convection cooling or forced air (2.7m/s)
Altitude	m	5,000. Operating, transportation and storage
Withstand Voltage (For 1 minute)	Vac	Input to Ground 2,000 (1xMOPP), Input to Output 4,000 (2xMOPP), Output to Ground 1500 (1xMOPP)
Isolation Resistance	MΩ	>100 at 25°C, 70%RH & 500VDC
Vibration (Non Operating)	-	10-55Hz (1 min sweep). Maximum 19.6m/s <sup>2</sup> , 1 hour each
Shock	-	<196m/s <sup>2</sup>
<b>Other</b>		
Weight (Typ)	g	Open frame: 450, /EF: 790
Size (LxWxH)	mm	Open frame: 127 x 76.2 x 37, /EF: 157 x 85 x 42.5
Size (LxWxH)	Inches	Open frame: 5 x 3 x 1.46, /EF: 6.18 x 3.35 x 1.67
Connectors	-	Input: JST VHR-5N, Output: M4 screws
Warranty	yrs	5

Notes:

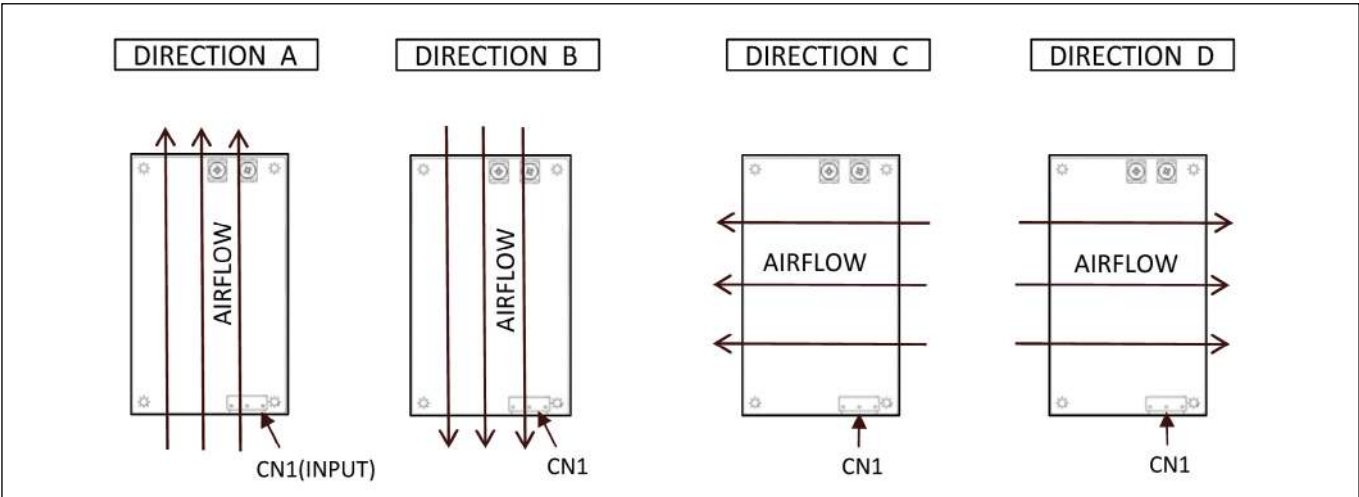
See website for detailed specifications, test methods and installation manual

Specification parameters apply at 25°C ambient temperature unless otherwise stated.

**Mounting Orientation**



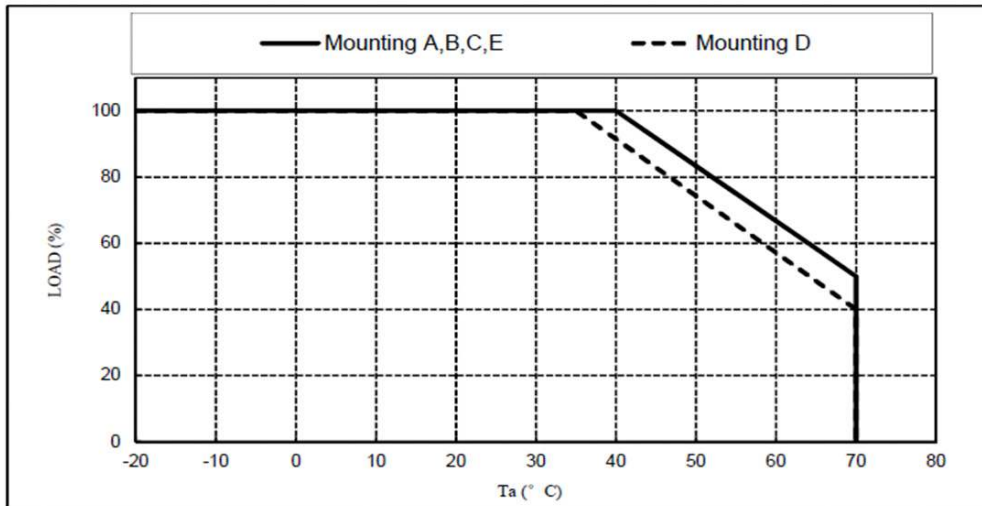
**Airflow Direction**



## Convection Cooling CUS500M1

(Additional derating applies below 115Vac input)

Ta (°C)	Mounting A B C E	Mounting D
	LOAD (%)	LOAD (%)
-20 - +35	100	100
40	100	91.4
50	83.3	74.3
60	66.7	57.1
70	50	40

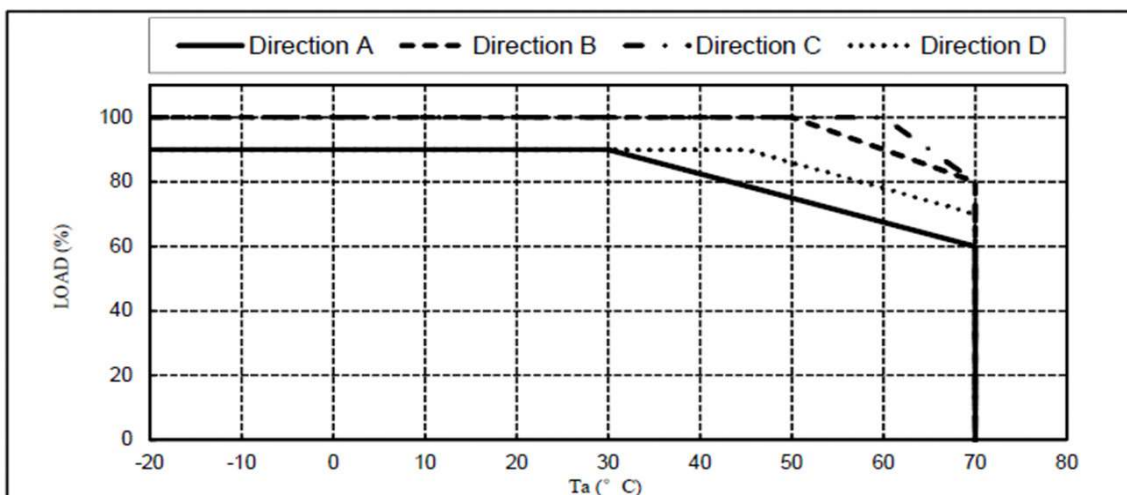


## Forced Air Cooling CUS500M1-12 (2.7m/s)

(Additional derating applies below 115Vac input)

MODEL: CUS500M1-12

Ta (°C)	Direction A	Direction B	Direction C	Direction D
	LOAD (%)	LOAD (%)	LOAD (%)	LOAD (%)
-20 - +30	90	100	100	90
40	82.5	100	100	90
45	78.8	100	100	90
50	75	100	100	86
60	67.5	90	100	78
70	60	80	80	70

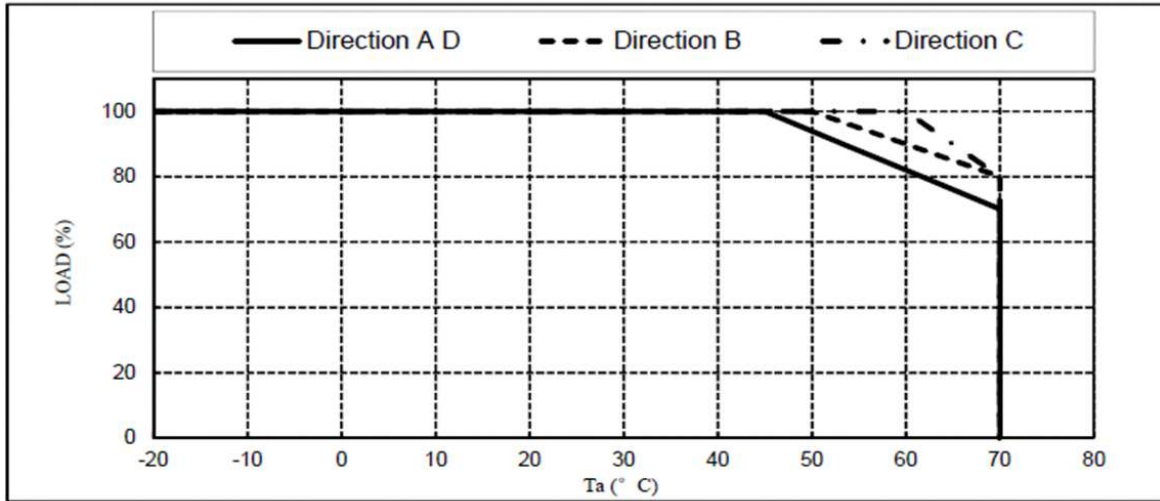


**Forced Air Cooling CUS500M1-19 to -48 (2.7m/s)**

(Additional derating applies below 115Vac input)

MODEL: CUS500M1-19/24/28/32/36/48

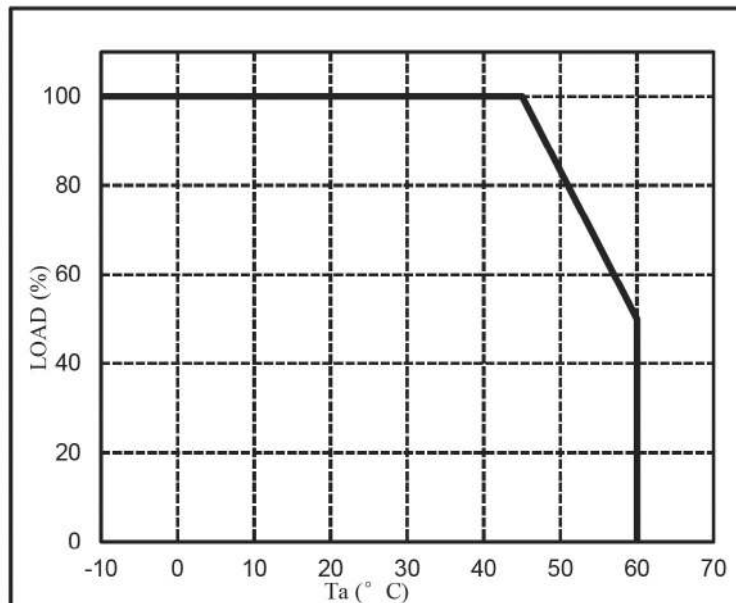
Ta (°C)	Direction A D	Direction B	Direction C
	LOAD (%)	LOAD (%)	LOAD (%)
-20 - +45	100	100	100
50	94	100	100
60	82	90	100
70	70	80	80



**CUS500M1-xx/EF (End Fan)**

(All models, all conditions)

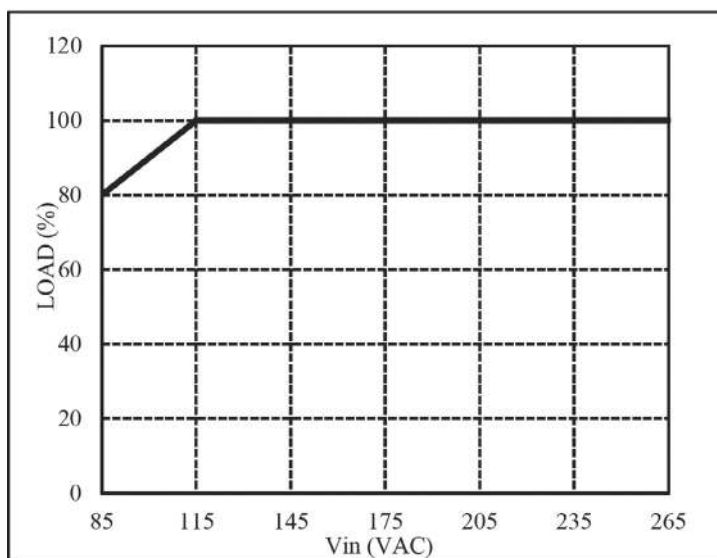
Ta (°C)	LOAD (%)
-10 - +45	100
50	83.3
60	50



**Derating versus Input Voltage**

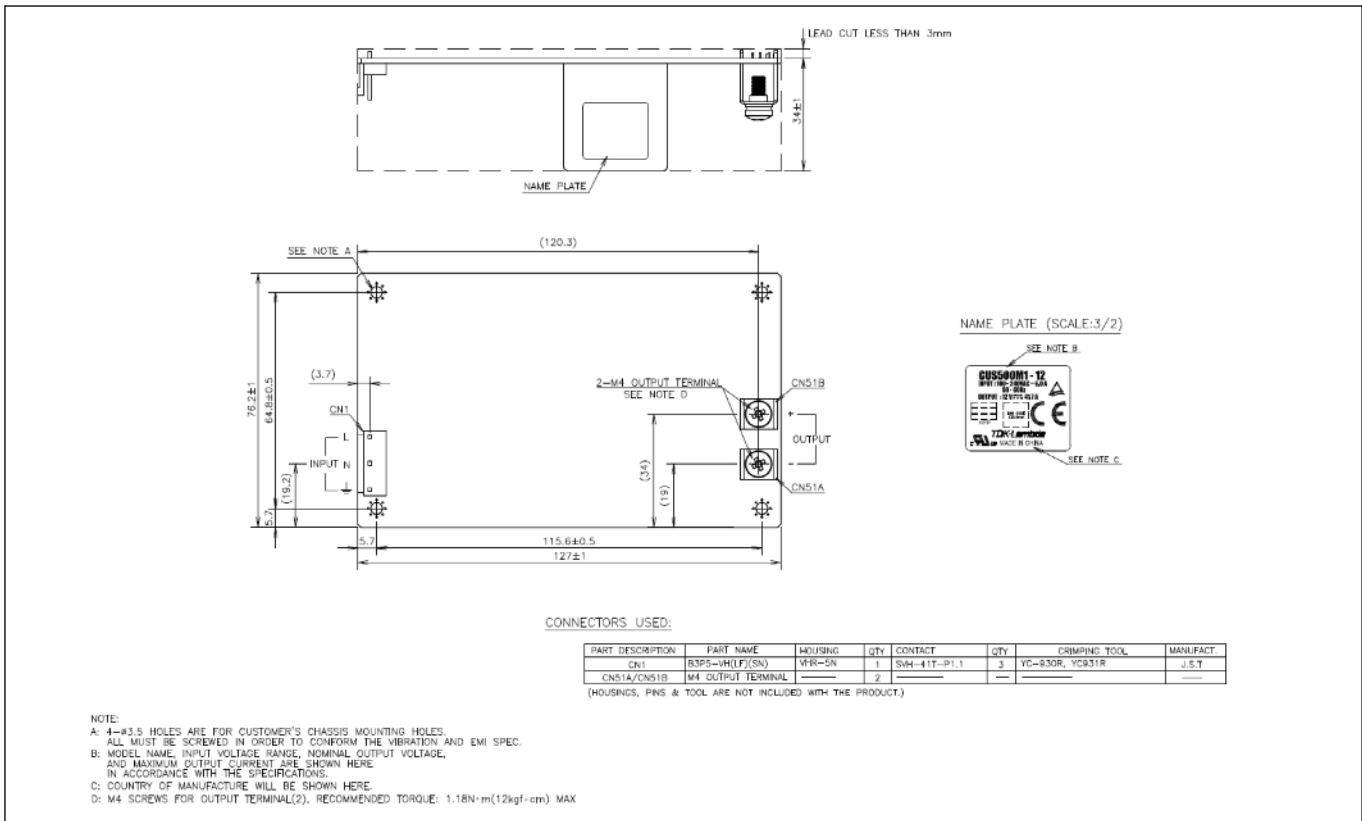
(All models, all conditions)

INPUT VOLTAGE (VAC)	LOAD (%)
85	80
115~265	100

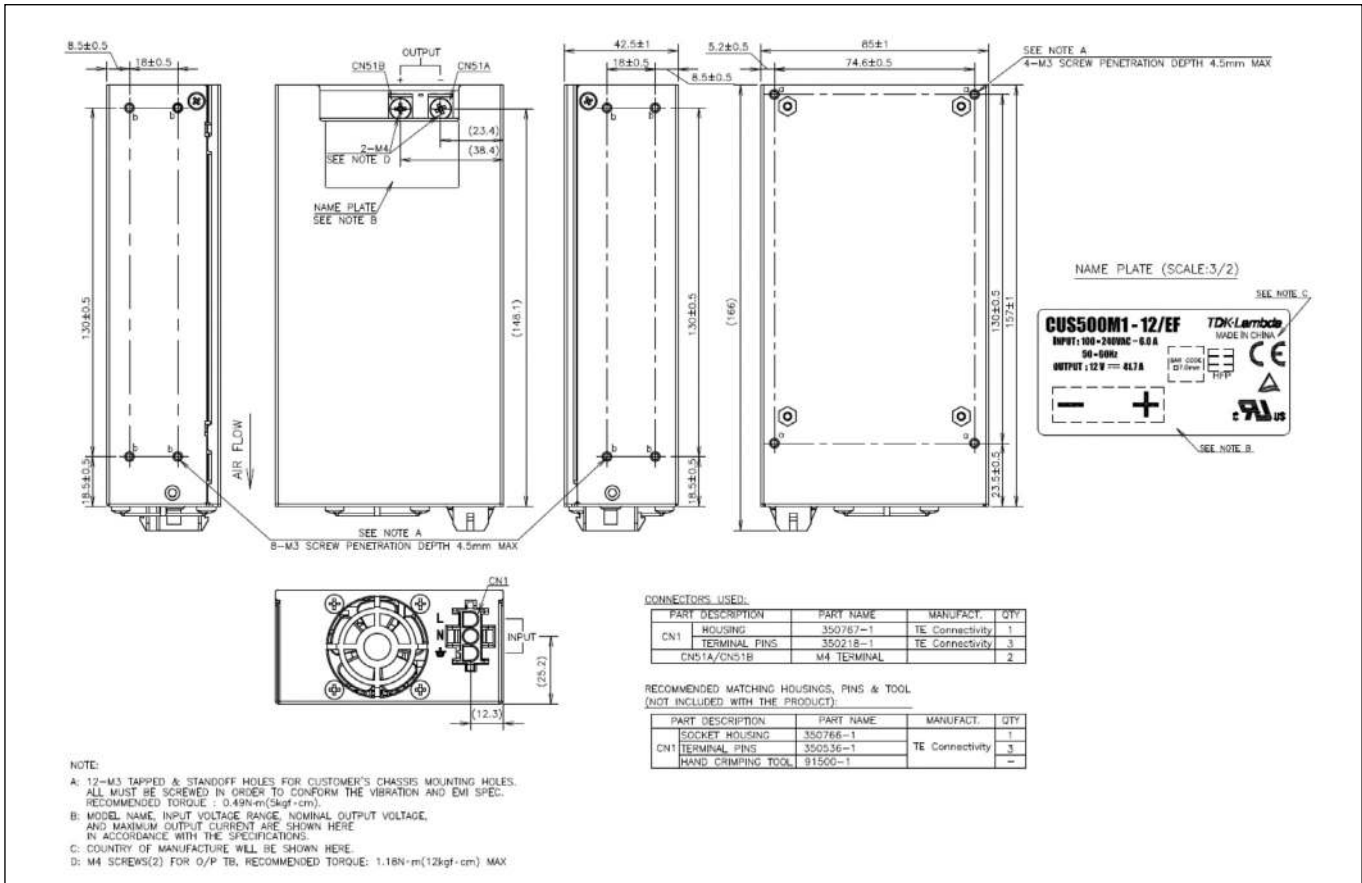


Mechanical Specification

Outline Drawing CUS500M1 Open Frame Unit



Outline Drawings CUS500M1 End Fan







### TDK-Lambda France SAS

Tel: +33 1 60 12 71 65  
france@fr.tdk-lambda.com  
www.emea.lambda.tdk.com/fr



### Italy Sales Office

Tel: +39 02 61 29 38 63  
info.italia@it.tdk-lambda.com  
www.emea.lambda.tdk.com/it



### Netherlands

info@nl.tdk-lambda.com  
www.emea.lambda.tdk.com/nl



### TDK-Lambda Germany GmbH

Tel: +49 7841 666 0  
info.germany@de.tdk-lambda.com  
www.emea.lambda.tdk.com/de



### Austria Sales Office

Tel: +43 2256 655 84  
info@at.tdk-lambda.com  
www.emea.lambda.tdk.com/at



### Switzerland Sales Office

Tel: +41 44 850 53 53  
info@ch.tdk-lambda.com  
www.emea.lambda.tdk.com/ch



### Nordic Sales Office

Tel: +45 8853 8086  
info@dk.tdk-lambda.com  
www.emea.lambda.tdk.com/dk



### TDK-Lambda UK Ltd.

Tel: +44 (0) 12 71 85 66 66  
powersolutions@uk.tdk-lambda.com  
www.emea.lambda.tdk.com/uk



### TDK-Lambda Ltd.

Tel: +9 723 902 4333  
info@tdk-lambda.co.il  
www.emea.lambda.tdk.com/il



### C.I.S.

#### Commercial Support:

Tel: +7 (495) 665 2627

#### Technical Support:

Tel: +7 (812) 658 0463  
info@tdk-lambda.ru  
www.emea.lambda.tdk.com/ru



### TDK-Lambda Americas

Tel: +1 800-LAMBDA-4 or 1-800-526-2324  
powersolutions@us.tdk-lambda.com  
www.us.lambda.tdk.com



### TDK Electronics do Brasil Ltda

Tel: +55 11 3289-9599  
sales.br@tdk-electronics.tdk.com  
www.tdk-electronics.tdk.com/en



### TDK-Lambda Corporation

Tel: +81-3-6778-1113  
www.jp.lambda.tdk.com



### TDK-Lambda (China) Electronics Co. Ltd.

Tel: +86 21 6485-0777  
powersolutions@cn.tdk-lambda.com  
www.lambda.tdk.com.cn



### TDK-Lambda Singapore Pte Ltd.

Tel: +65 6251 7211  
tis.mkt@sg.tdk-lambda.com  
www.sg.lambda.tdk.com



### TDK India Private Limited, Power Supply Division

Tel: +91 80 4039-0660  
mathew.philip@in.tdk-lambda.com  
www.sg.lambda.tdk.com

