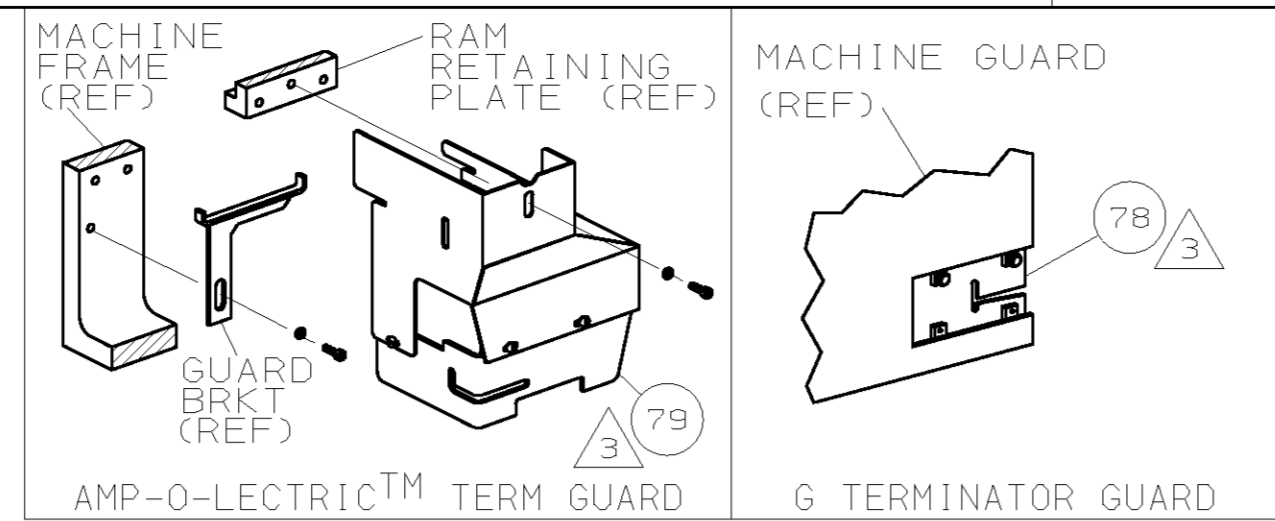
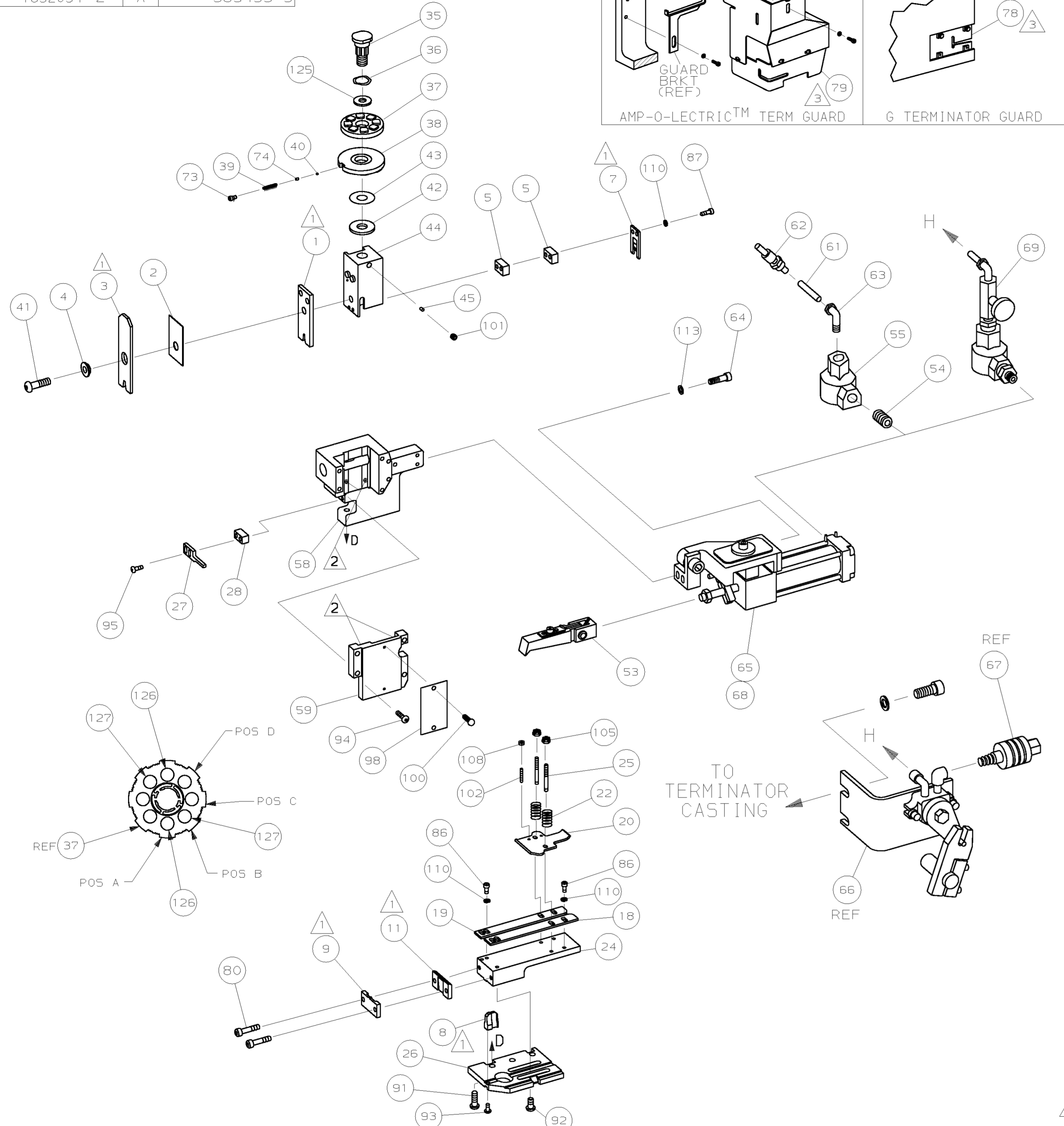


| PART NUMBER | REV | FIRST USED |
|-------------|-----|------------|
| 1852054-1   | A   | 122500-1   |
| 1852054-2   | A   | 565435-5   |



| AMP TERM PN       |  | MFR TERM PN               |  | YAZAKI TERMINAL        |  | YAZAKI CRIMP SPECS         |  |
|-------------------|--|---------------------------|--|------------------------|--|----------------------------|--|
| 1572711           |  | 7114-2021-02              |  |                        |  |                            |  |
| PAD LTR           |  | CRIMP HEIGHT              |  | WIRE SIZE              |  |                            |  |
| A                 |  | .080 ±.002 [2.03 ±0.05mm] |  | 3.0mm <sup>2</sup>     |  |                            |  |
| B                 |  | .075 ±.002 [1.91 ±0.05mm] |  | (2)1.25mm <sup>2</sup> |  |                            |  |
| C                 |  | NOT                       |  | USED                   |  |                            |  |
| D                 |  | NOT                       |  | USED                   |  |                            |  |
| CRIMP             |  | SIZE                      |  | TYPE                   |  | RANGE                      |  |
| WIRE              |  | .126 [3.20mm]             |  | F                      |  | (2)1.25-3.0mm <sup>2</sup> |  |
| INSUL             |  | .189 [4.80mm]             |  | F                      |  | ø4.8-5.0MM                 |  |
| WIRE STRIP LENGTH |  | TERM APPL                 |  | SPEC                   |  | FEED                       |  |
| .172-.203         |  | NONE                      |  |                        |  | 1.047                      |  |
|                   |  |                           |  | APPL INSTRUCTION       |  | SET UP GAGE                |  |
|                   |  |                           |  | 408-8039               |  | 458638-1                   |  |
|                   |  |                           |  | LAYOUT                 |  | L4016                      |  |

| -1 | LEADMAKER & BENCH MODEL G | AIR FEED |  |
|----|---------------------------|----------|--|
| -2 | BENCH MODEL K             | AIR FEED |  |



- 1 RECOMMENDED SPARE PARTS.
- 2 GREASE LIGHTLY.
- 3 GUARD MUST BE IN PLACE WHEN OPERATING APPLICATOR IN A BENCH MACHINE.
- 4 SEE DRAWING FOR COMPONENTS
- 5 ITEM 78 USED WITH G TERMINATOR ONLY.

| QTY | RECD | PER | ASSY | U/M | DWG SIZE | PART NO    | DESCRIPTION                     | ITEM NO |
|-----|------|-----|------|-----|----------|------------|---------------------------------|---------|
|     |      |     |      |     |          |            |                                 | 129     |
|     |      |     |      |     |          |            |                                 | 128     |
| 2   | 2    | -   | C    |     |          | 8-354778-9 | PIN, WIRE DISC (.2940)B         | 127     |
| 2   | 2    | -   | C    |     |          | 8-354778-5 | PIN, WIRE DISC (.2920)A         | 126     |
| 1   | 1    | -   | A    |     |          | 986950-1   | WASHER, FLAT PRECISION          | 125     |
| 1   | 1    | -   | A    |     |          | 217238-1   | GENERAL INSTRUCTION PACKAGE     | 124     |
| 1   | 1    | -   | -    |     |          | 4088039    | EF APPL INST 408-8039           | 123     |
|     |      |     |      |     |          |            |                                 | 122     |
|     |      |     |      |     |          |            |                                 | 121     |
|     |      |     |      |     |          |            |                                 | 120     |
|     |      |     |      |     |          |            |                                 | 119     |
|     |      |     |      |     |          |            |                                 | 118     |
|     |      |     |      |     |          |            |                                 | 117     |
|     |      |     |      |     |          |            |                                 | 116     |
|     |      |     |      |     |          |            |                                 | 115     |
|     |      |     |      |     |          |            |                                 | 114     |
| 2   | 2    | -   | A    |     |          | 21024-5    | WASHER, LOCK (#10) AIR ASSY     | 113     |
|     |      |     |      |     |          |            |                                 | 112     |
|     |      |     |      |     |          |            |                                 | 111     |
| 8   | 8    | -   | A    |     |          | 21024-4    | WASHER, LOCK (NO.8) SHEAR BL    | 110     |
|     |      |     |      |     |          |            |                                 | 109     |
| 2   | 2    | -   | A    |     |          | 21018-4    | NUT, HEX (4-40) DRAG            | 108     |
|     |      |     |      |     |          |            |                                 | 107     |
|     |      |     |      |     |          |            |                                 | 106     |
| 2   | 2    | -   | A    |     |          | 21022-2    | NUT, HEX SL (8-32) DRAG STUD    | 105     |
|     |      |     |      |     |          |            |                                 | 104     |
|     |      |     |      |     |          |            |                                 | 103     |
| 2   | 2    | -   | A    |     |          | 2-21006-6  | SCR, SKT SET (4-40x.62) DRAG    | 102     |
| 1   | 1    | -   | A    |     |          | 21009-2    | SCR, SKT SET (1/4-20x.25) RAM   | 101     |
| 2   | 2    | -   | A    |     |          | 21017-2    | SCR, DRIVE (#2x.19) ID PLATE    | 100     |
|     |      |     |      |     |          |            |                                 | 99      |
| 1   | 1    | -   | B    |     |          | 461264-1   | PLATE, IDENTIFICATION           | 98      |
|     |      |     |      |     |          |            |                                 | 97      |
|     |      |     |      |     |          |            |                                 | 96      |
| 2   | 2    | -   | A    |     |          | 2-21002-2  | SCR, BHC (8-32x.50) STRIPPER    | 95      |
| 4   | 4    | -   | A    |     |          | 2-21002-9  | SCR, BHC (10-32x.75) CAP        | 94      |
| 1   | 1    | -   | A    |     |          | 22733-8    | SCR, BHC (8-32x.38 LW) ANVIL    | 93      |
| 4   | 4    | -   | A    |     |          | 3-21002-3  | SCR, BHC (1/4-20x.50) ST 6D PL  | 92      |
| 3   | 3    | -   | A    |     |          | 2-22733-8  | SCR, BHC (1/4-20x.62) H5G       | 91      |
|     |      |     |      |     |          |            |                                 | 90      |
|     |      |     |      |     |          |            |                                 | 89      |
|     |      |     |      |     |          |            |                                 | 88      |
| 2   | 2    | -   | A    |     |          | 2-21000-9  | SCR, SHC (8-32x.75) SLUG BLADE  | 87      |
| 4   | 4    | -   | A    |     |          | 2-21000-5  | SCR, SHC (8-32x.25) STRIP GUIDE | 86      |
|     |      |     |      |     |          |            |                                 | 85      |
|     |      |     |      |     |          |            |                                 | 84      |
|     |      |     |      |     |          |            |                                 | 83      |
|     |      |     |      |     |          |            |                                 | 82      |
|     |      |     |      |     |          |            |                                 | 81      |
| 2   | 2    | -   | A    |     |          | 3-21002-0  | SCR, BHC (10-32x.88) SHEAR PL   | 80      |
| 1   | -    | -   | A    |     |          | 455750-7   | GUARD ASSY                      | 79      |
| -   | REF  | -   | A    |     |          | 679532-1   | INSERT, GUARD                   | 78      |
|     |      |     |      |     |          |            |                                 | 77      |
|     |      |     |      |     |          |            |                                 | 76      |
|     |      |     |      |     |          |            |                                 | 75      |
| 1   | 1    | -   | A    |     |          | 690603-1   | SPRING, ASSIST                  | 74      |
| 1   | 1    | -   | A    |     |          | 23030-1    | SCR, SKT CAP (6-32x.25) CP DSC  | 73      |
|     |      |     |      |     |          |            |                                 | 72      |
|     |      |     |      |     |          |            |                                 | 71      |

| QTY | RECD | PER | ASSY | U/M | DWG SIZE | PART NO     | DESCRIPTION                  | ITEM NO |
|-----|------|-----|------|-----|----------|-------------|------------------------------|---------|
|     |      |     |      |     |          |             |                              | 60      |
| 1   | 1    | -   | C    |     |          | 454220-1    | CAP, RAM                     | 59      |
| 1   | 1    | -   | D    |     |          | 453736-1    | HOUSING                      | 58      |
|     |      |     |      |     |          |             |                              | 57      |
|     |      |     |      |     |          |             |                              | 56      |
| -   | 1    | -   | A    |     |          | 22374-7     | VALVE, QUICK EXHAUST         | 55      |
| -   | 1    | -   | A    |     |          | 22304-1     | NIPPLE, HEX                  | 54      |
| 1   | 1    | -   | B    |     |          | 460680-1    | FEED FINGER ASSY             | 53      |
|     |      |     |      |     |          |             |                              | 52      |
|     |      |     |      |     |          |             |                              | 51      |
|     |      |     |      |     |          |             |                              | 50      |
|     |      |     |      |     |          |             |                              | 49      |
|     |      |     |      |     |          |             |                              | 48      |
|     |      |     |      |     |          |             |                              | 47      |
|     |      |     |      |     |          |             |                              | 46      |
| 1   | 1    | -   | A    |     |          | 690191-1    | PLUG, NYLON                  | 45      |
| 1   | 1    | -   | C    |     |          | 455674-1    | RAM                          | 44      |
| 1   | 1    | -   | A    |     |          | 690125-1    | WASHER, LAMINATED            | 43      |
| 1   | 1    | -   | A    |     |          | 690124-1    | WASHER, RAM                  | 42      |
| 1   | 1    | -   | A    |     |          | 7-21002-9   | BOLT, CRIMPER (5/16-24x1.00) | 41      |
| 1   | 1    | -   | A    |     |          | 23241-6     | BALL, STEEL                  | 40      |
| 1   | 1    | -   | A    |     |          | 690170-1    | SPRING, COMPRESSION          | 39      |
| 1   | 1    | -   | C    |     |          | 1-690142-1  | DISC, INSULATION             | 38      |
| 1   | 1    | -   | D    |     |          | 354777-1    | DISC, WIRE                   | 37      |
| 1   | 1    | -   | A    |     |          | 22480-5     | WASHER, SPRING               | 36      |
| 1   | 1    | -   | B    |     |          | 690212-1    | POST, RAM                    | 35      |
|     |      |     |      |     |          |             |                              | 34      |
|     |      |     |      |     |          |             |                              | 33      |
|     |      |     |      |     |          |             |                              | 32      |
|     |      |     |      |     |          |             |                              | 31      |
|     |      |     |      |     |          |             |                              | 30      |
|     |      |     |      |     |          |             |                              | 29      |
| 1   | 1    | -   | B    |     |          | 3-690451-2  | SPACER, STRIPPER             | 28      |
| 1   | 1    | -   | A    |     |          | 240639-1    | STRIPPER                     | 27      |
| 1   | 1    | -   | D    |     |          | 455676-1    | PLATE, BASE                  | 26      |
| 2   | 2    | -   | A    |     |          | 22354-6     | DRAG, STUD                   | 25      |
| 1   | 1    | -   | B    |     |          | 455678-1    | PLATE, STRIP GUIDE           | 24      |
|     |      |     |      |     |          |             |                              | 23      |
| 2   | 2    | -   | A    |     |          | 22281-6     | SPRING, DRAG                 | 22      |
|     |      |     |      |     |          |             |                              | 21      |
| 1   | 1    | -   | A    |     |          | 454177-1    | DRAG, STOCK                  | 20      |
| 1   | 1    | -   | C    |     |          | 458030-5    | GUIDE, STRIP (REAR)          | 19      |
| 1   | 1    | -   | C    |     |          | 458031-5    | GUIDE, STRIP (FRONT)         | 18      |
|     |      |     |      |     |          |             |                              | 17      |
|     |      |     |      |     |          |             |                              | 16      |
|     |      |     |      |     |          |             |                              | 15      |
|     |      |     |      |     |          |             |                              | 14      |
|     |      |     |      |     |          |             |                              | 13      |
|     |      |     |      |     |          |             |                              | 12      |
|     |      |     |      |     |          |             |                              | 11      |
| 1   | 1    | -   | B    |     |          | 240644-1    | PLATE, REAR SHEAR            | 10      |
|     |      |     |      |     |          |             |                              | 9       |
| 1   | 1    | -   | B    |     |          | 690482-4    | PLATE, FRONT SHEAR           | 9       |
| 1   | 1    | -   | D    |     |          | 1-1633098-6 | ANVIL                        | 8       |
| 1   | 1    | -   | B    |     |          | 690474-4    | BLADE, SLUG                  | 7       |
|     |      |     |      |     |          |             |                              | 6       |
| 2   | 2    | 2   | C    |     |          | 2-240641-9  | SPACER, SLUG BLADE           | 5       |
| 1   | 1    | -   | B    |     |          | 238011-4    | SPACER, BLOCK CRIMPER        | 4       |
| 1   | 1    | -   | C    |     |          | 5-1424909-6 | CRIMPER, INSULATION          | 3       |
| 1   | 1    | -   | B    |     |          | 1-455888-1  | SPACER, CRIMPER              | 2       |
| 1   | 1    | -   | C    |     |          | 9-1490019-6 | CRIMPER, WIRE                | 1       |

| QTY | RECD | PER | ASSY | U/M | DWG SIZE | PART NO | DESCRIPTION | ITEM NO |
|-----|------|-----|------|-----|----------|---------|-------------|---------|
| -2  | -1   | U/M |      |     |          |         |             |         |

| QTY | RECD | PER | ASSY | U/M | DWG SIZE | PART NO | DESCRIPTION | ITEM NO |
|-----|------|-----|------|-----|----------|---------|-------------|---------|
| -2  | -1   | U/M |      |     |          |         |             |         |

THIS DRAWING IS UNRELEASED. RELEASED FOR PUBLICATION BY AMP INCORPORATED. ALL RIGHTS RESERVED. COPYRIGHT 20

LOC A  
DIST 66

DIMENSIONS IN INCHES. DO NOT SCALE PRINT. TOLERANCES UNLESS OTHERWISE SPECIFIED:  
 2 PLC DEC ±.25  
 3 PLC DEC ±  
 4 PLC DEC ±  
 ANGLES ±  
 SURF TEXTURE: ✓  
 REMOVE BURRS, BREAK SHARP EDGES R.015 MAX

MATL - HT TR - FIN -  
 DR 10MAY05 APP 11MAY05 T.ELBIN  
 R.O.WILSON  
 CHK 10MAY05 REL -  
 R.O.WILSON

AMP Tyco Electronics Harrisburg, PA 17105-3608

NAME END FEED HDM APPLICATOR MACHINE REF MINI APPL  
 SCALE - DWG NO 1852054 SHEET 1 OF 1 REV A

CAGE CODE 00779 CUSTOMER AND ASSEMBLY DRAWING RESTRICTED TO