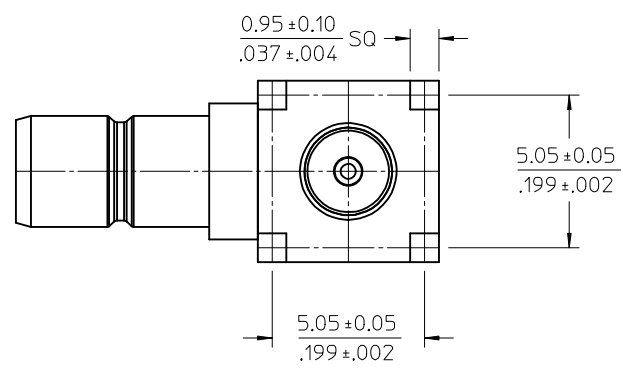
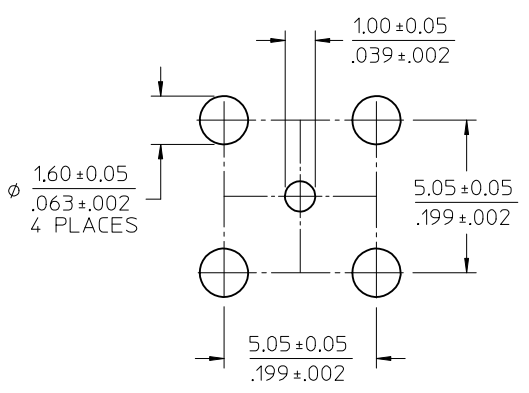
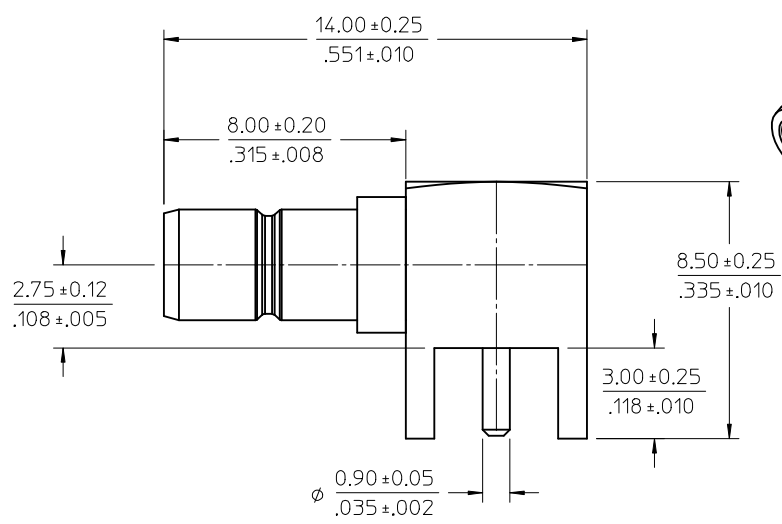
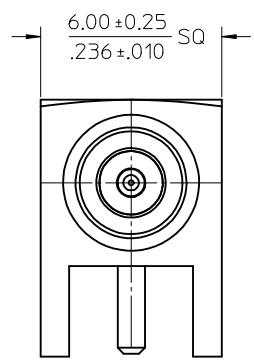
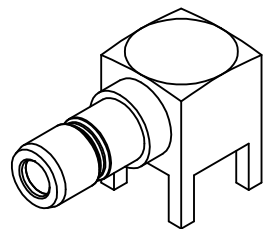


MATERIAL & FINISHES:

- BODY BRASS
PLATED GOLD
- INSULATOR TEFLON
- CENTER CONTACT BRASS
PLATED GOLD
- HOUSING BRASS
PLATED GOLD
- PACKAGING BY TRAY



PS-73598-0099	PRODUCT SPECIFICATION
MIL-STD-348A, FIG. 311.2	SMB INTERFACE
SPECIFICATION	DESCRIPTION

NEW RELEASED PDR: 07-004 ECN: 2007-0102 DRWNSCHOU 2006/09/08 CHKD: 2006/09/14 APPR: MHIANG 2006/09/14	QUALITY SYMBOLS	GENERAL TOLERANCES (UNLESS SPECIFIED)	DIMENSION STYLE	SCALE	DESIGN UNITS	THIRD ANGLE PROJECTION	
	▼=0 ▽=0	mm INCH 4 PLACES ± --- ± --- 3 PLACES ± --- ± --- 2 PLACES ± --- ± --- 1 PLACE ± --- ± ---	IN/MM	DRAWN BY DATE JOYCE 2006/07/19 CHECKED BY DATE JOHSON 2006/07/19 APPROVED BY DATE MISEN 2006/07/19	TITLE	SMB JACK, R/A PCB RECEPTACLE, 50 OHMS SMB-JP	MOLEX INCORPORATED
	ANGULAR ± 2 °	DRAFT WHERE APPLICABLE MUST REMAIN WITHIN DIMENSIONS	MATERIAL NO. 73396-0520	DOCUMENT NO. SD-73396-052	SHEET NO. 1 OF 1		
	A	REV	SIZE	THIS DRAWING CONTAINS INFORMATION THAT IS PROPRIETARY TO MOLEX INCORPORATED AND SHOULD NOT BE USED WITHOUT WRITTEN PERMISSION			