

1

2

3

4

5

6

7

A

B

C

D

E

F


G

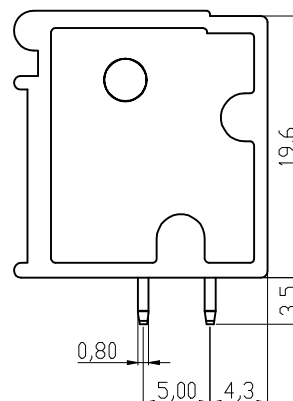
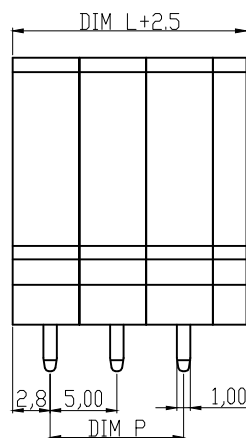
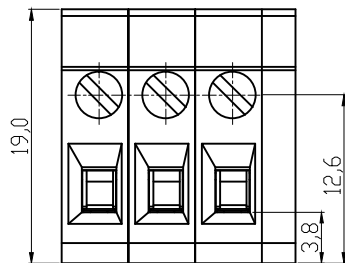
H

## Material

Terminal body(metal housing): steel stamped  
Terminal screw: Steel Zinc plating "-" slot type  
Contacts: Brass  
Surfaces of solder tail: Tin plated  
Insulator(housing): NL66(UL94V-0) , GREEN

## Electrical cULus

Voltage rating: 300VAC  
Current rating: 20A  
Wire range:  
Solid wire(AWG): 12-22  
Stranded wire(AWG): 12-22  
Torque(Lb-In): 2.4  
Screw: M2.5  
Wire strip length: 10-11mm  
Withstanding Voltage: 1.6KV  
Operating temperature: -40°C to +115°C  
Soldering temperature: 250°C±10°C/5 Sec  
Safety Approval: 

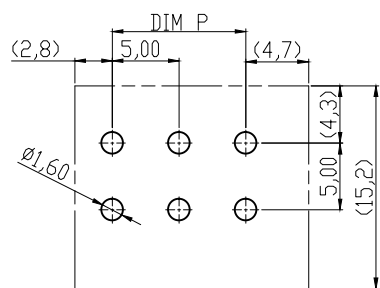


## DIMENSION

L	Nx5.0
P	(N-1)x5.0

N=Number of poles

Poles	Tolerance	
	DIM L	DIM P
2p-6p	±0.20	±0.15
7p-12p	±0.25	±0.20
13p-18p	±0.30	±0.25
19p-24p	±0.40	±0.30




## RECOMMENDER PCB LAYOUT

RoHS compliant

Unit: mm



File No.: E349947

Scale	1:1					Date	Name	Customer-No.
TOLERANCE						Drawn	Alex	
X.	±0.50					Approved	Joanna	ASSMANN WSW-No. <b>A-TB500-TRxxV</b>
X.X	±0.30							Drawing-No.
X.XX	±0.10							<b>ASS 4098 CO</b>
DIM	TOL	②	Add UL	18.04.2016	Joanna			
X.°	±1°	①	Drawn	19.04.2010	Alex			
Angle	TOL	Id.	Modification	Date	Name	Replace	Sheet	

1

2

3

4

5

6

7

A

B

C

D

E

F

G

H