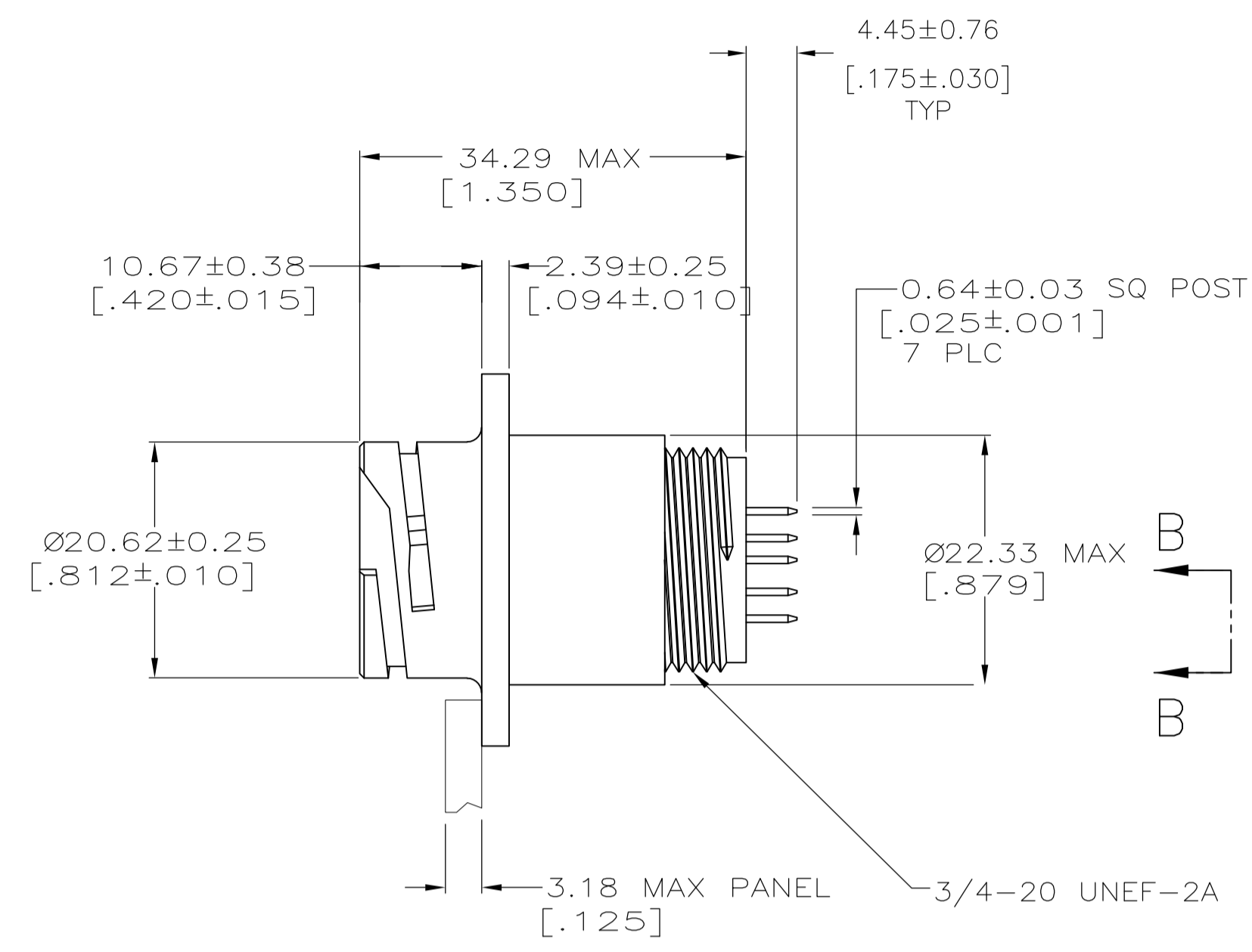
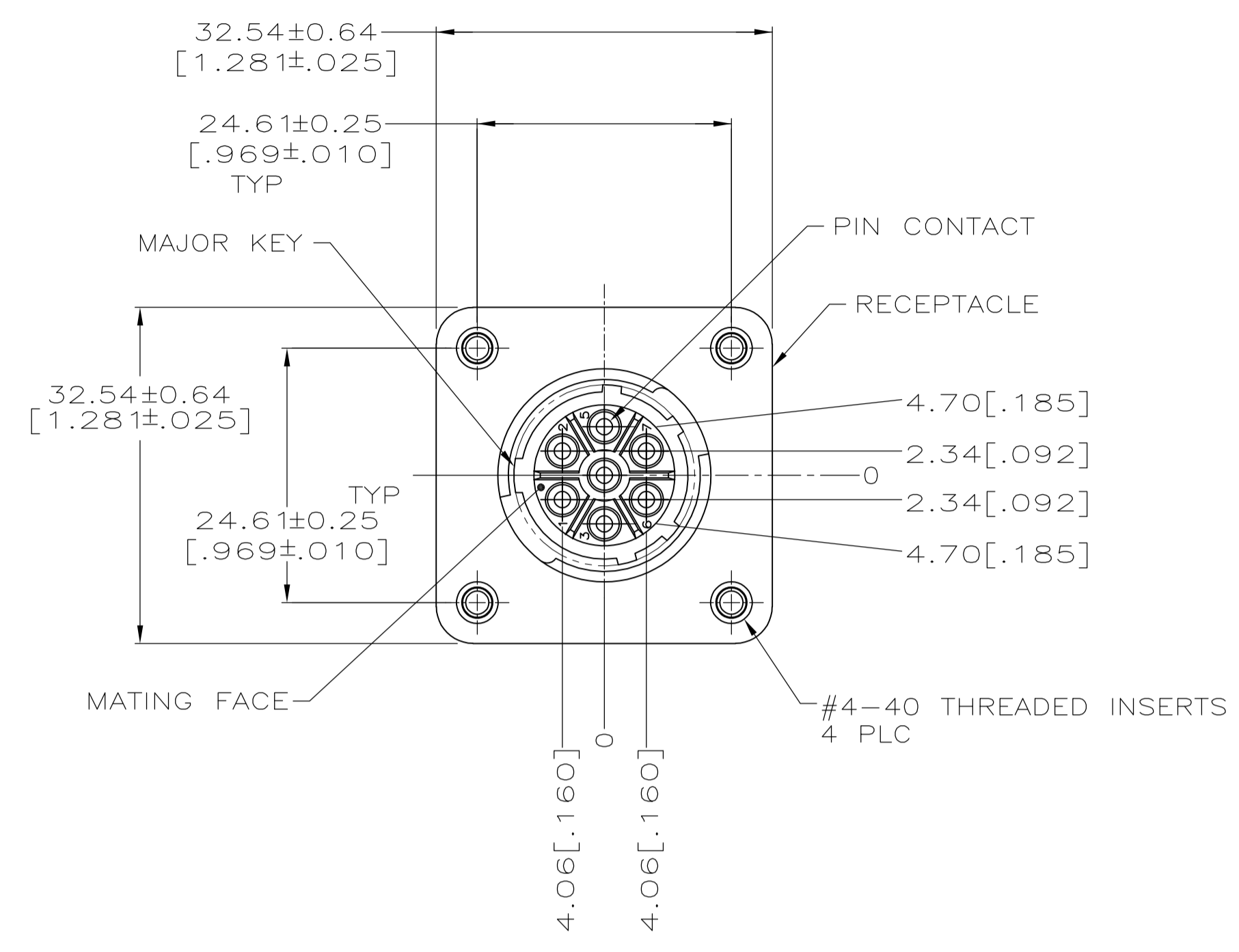
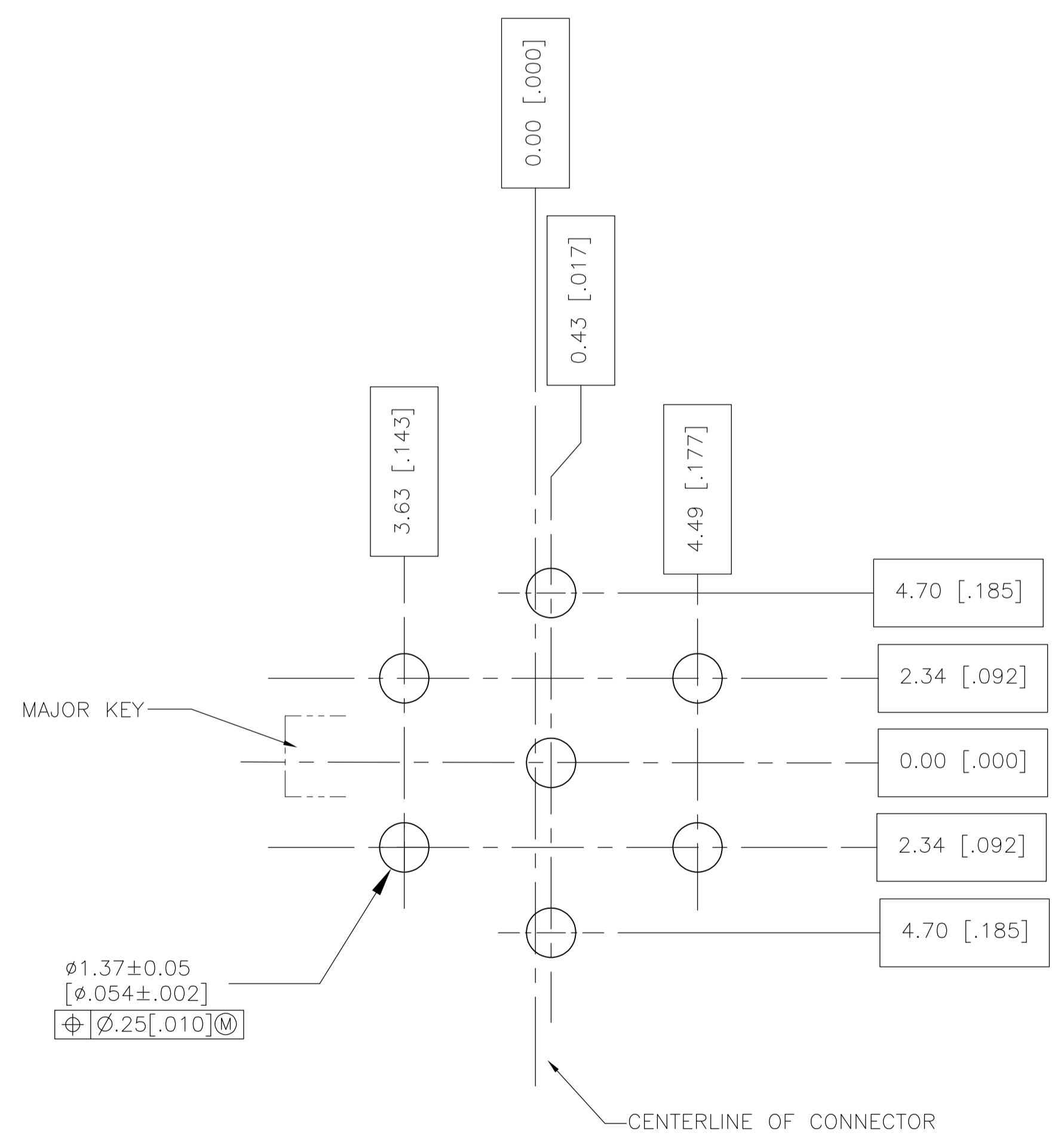
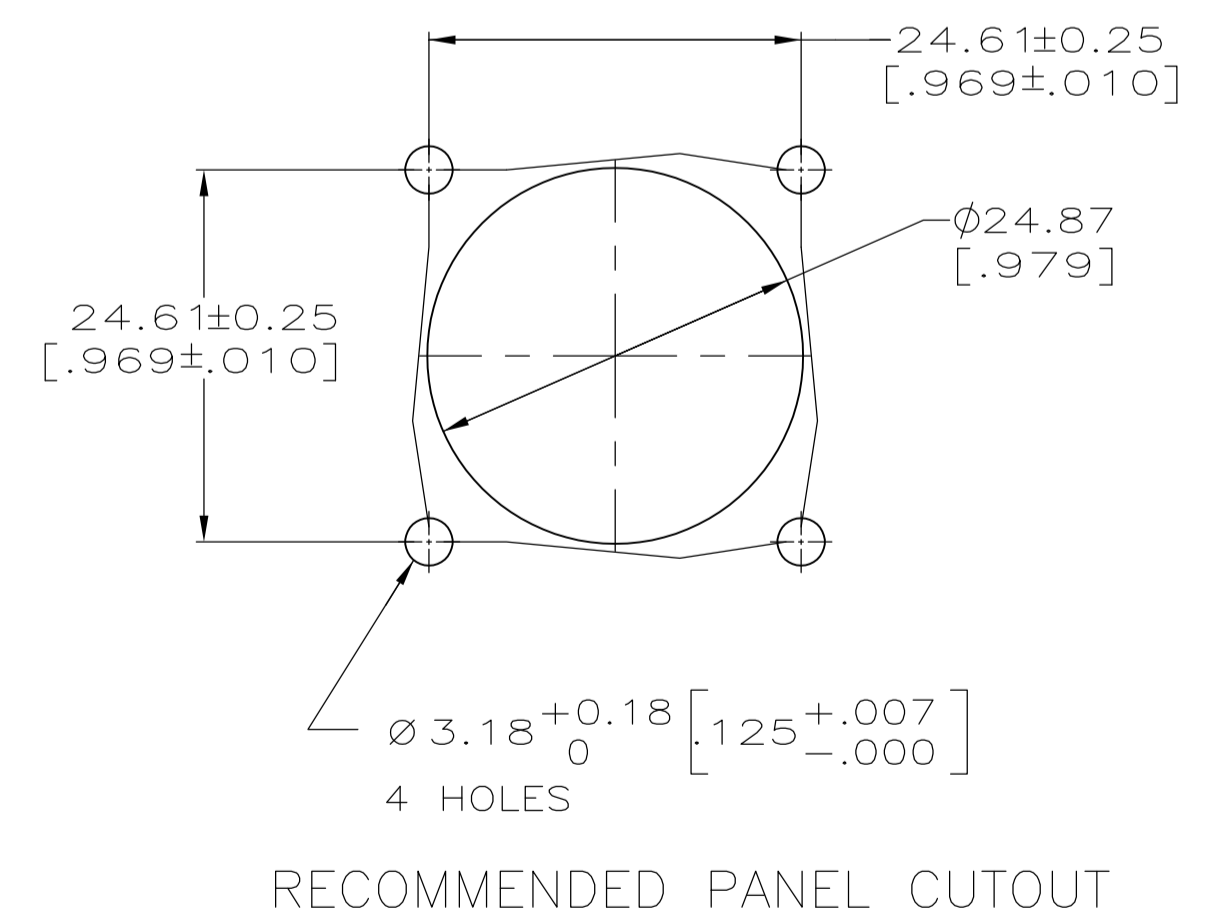
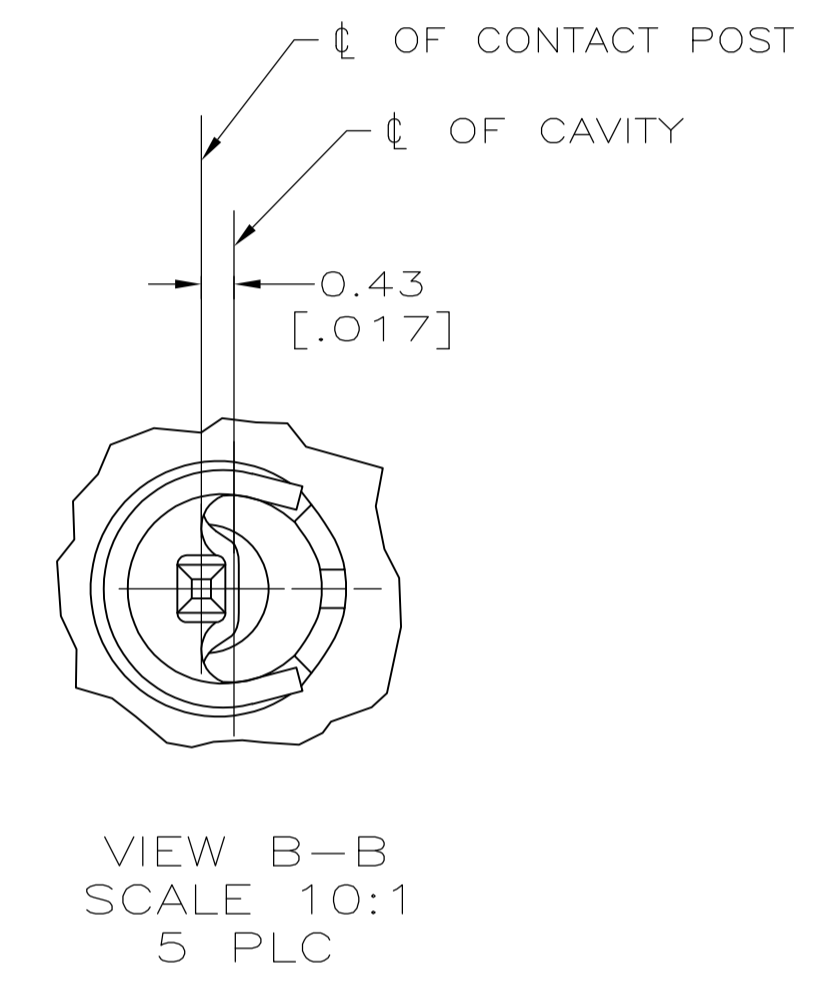


LOC		DIST		REVISIONS			
P	LTR	DESCRIPTION	DATE	DN	APVD		
A		REVISED PER ECO-14-014457	24SEP2014	NK	MZ		



- 1 CAVITY IDENTIFICATION ON FRONT AND REAR FACE.
- 2 MATERIALS:
 HOUSING: NYLON, UL94 V-0, BLACK
 CONTACT SPRING: STAINLESS STEEL
 CONTACT BODY AND POST: BRASS
 THREADED INSERTS: BRASS
- 3 FINISHES:
 CONTACT BODY: .00076 [.000030] MIN GOLD FOR A LENGTH OF 5.08 [.200] MIN FROM MATING END OF PIN GOLD FLASH ON REMAINDER OF CONTACT. BOTH OVER .00127 [.000050] MIN NICKEL
 CONTACT POST: .00254 [.000100] MIN TIN OVER .00127 [.000050] MIN NICKEL.



RECOMMENDED BOARD LAYOUT
 SCALE: 4:1

2267121-1
 PART NUMBER

THIS DRAWING IS A CONTROLLED DOCUMENT.		DIN NAGALAKSHMI_K 30MAY2014		TE Connectivity NAME ZITTO, MARK 30MAY2014 PRODUCT SPEC 108-10024 APPLICATION SPEC 114-10038	
DIMENSIONS: mm [INCHES]		TOLERANCES UNLESS OTHERWISE SPECIFIED:			
0 PLC ± - 1 PLC ± - 2 PLC ± 0.13[.005] 3 PLC ± - 4 PLC ± - ANGLES ± -				SIZE CAGE CODE DRAWING NO RESTRICTED TO A1 00779 C=2267121 -	
MATERIAL		FINISH		WEIGHT - CUSTOMER DRAWING SCALE 2:1 SHEET 1 OF 1 REV A	