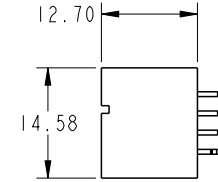
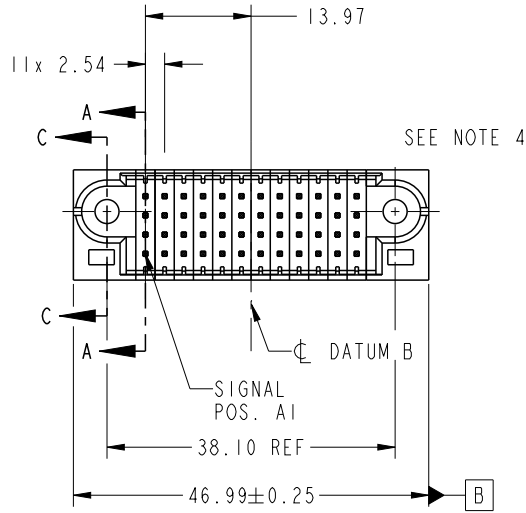


PRODUCT NO.	ROWS	SIGNAL											
		E1	1	2	3	4	5	6	7	8	9	10	11
51952-341LF	D C B A												



CODE	DIM "M" MATING LENGTH	CONTACT TYPE
H	[5.59]	SIGNAL
E	[6.86]	SIGNAL
HA	[N/A]	HOLD-DOWN

spec ref		See Notes		dr	Yun-Ping Zhu	2018/01/31	projection 	MM ←→	size	A4	scale	1:1		
tolerance std		TOLERANCES UNLESS OTHERWISE SPECIFIED		eng	Yun-Ping Zhu	2018/02/27			ecn no	-	rel level			Released
ISO 406				chr	Feng Zheng	2018/02/27					product family			PwrBlade
ISO 1101				appr	Pei-Ming Zheng	2018/02/27	product family			PwrBlade	rel level		Released	
surface		linear	0.X	±0.50	Amphenol FCi	title		48S	dwg no	51952-341		rev	A	
			0.XX	±0.25		VERTICAL STB HEADER								
			0.XXX	±0.10		cat. no.		-		Product - Customer Drw		sheet 1 of 4		
ISO 1302		angular	0°	±2°										

A

B

C

D

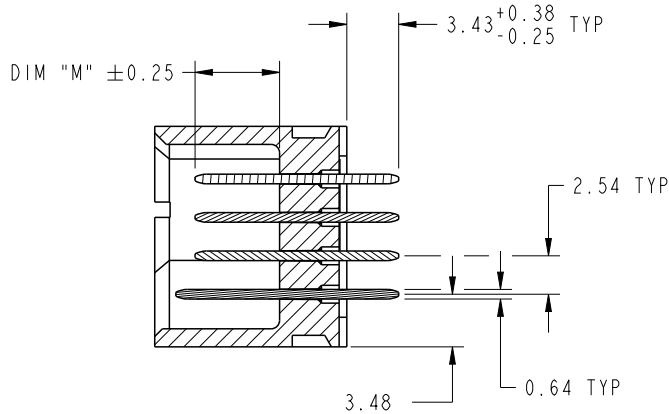
A

B

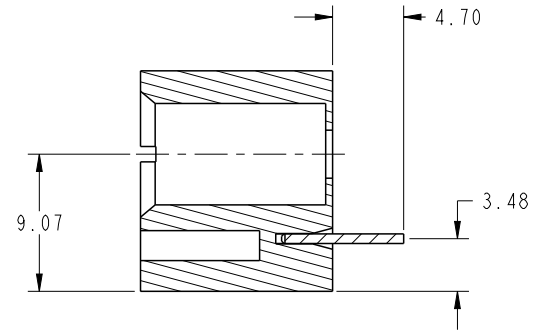
C

D

PRODUCT NUMBER
51952-341LF



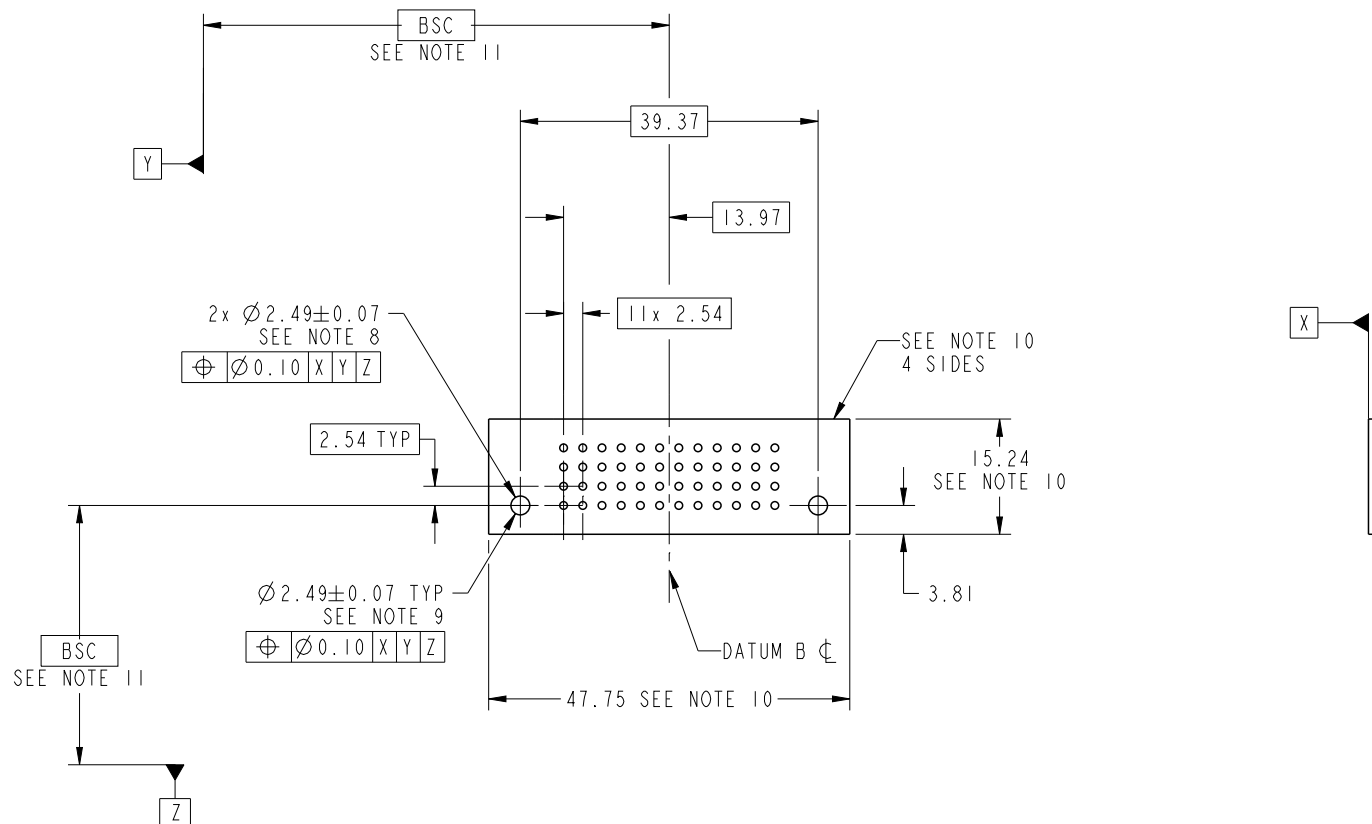
SECTION A-A
SCALE 2:1



SECTION C-C
SCALE 2:1

spec ref		SPEC_REF: I		dr	Yun-Ping Zhu	2018/01/31	projection 	MM ←→	size	A4	scale	1:1
tolerance std	ISO 406	TOLERANCES UNLESS OTHERWISE SPECIFIED		eng	Yun-Ping Zhu	2018/02/27			ecn no	-		
	ISO 1101			chr	Feng Zheng	2018/02/27						
surface	ISO 1302 ✓	linear	0.X	±0.50	Amphenol FCi	title	48S	product family	PwrBlade		rel level	Released
		0.XX	±0.25	cat. no.					-	Product - Customer Drw		sheet 2 of 4
	0.XXX	±0.10	VERTICAL STB HEADER		dwg no	51952-341		rev			A	
	angular	0°	±2°									

PRODUCT NUMBER
51952-341LF



RECOMMENDED PCB LAYOUT

spec ref		SPEC_REF: I		dr	Yun-Ping Zhu	2018/01/31	projection 	MM 	size	A4	scale	1:1
tolerance std		TOLERANCES UNLESS OTHERWISE SPECIFIED		eng	Yun-Ping Zhu	2018/02/27			ecn no	-		
ISO 406				chr	Feng Zheng	2018/02/27				-		
ISO 1101				appr	Pei-Ming Zheng	2018/02/27	product family	PwrBlade		rel level	Released	
surface	linear	0.X	±0.50	Amphenol FCi	title	48S		dwg no	51952-341		rev	A
		0.XX	±0.25			VERTICAL STB HEADER						
		0.XXX	±0.10			cat. no.	-		Product - Customer Drw			sheet 3 of 4
ISO 1302	angular	0°	±2°									

PRODUCT NUMBER

51952-341LF

NOTES:

1. THIS PRODUCT MEETS EUROPEAN UNION DIRECTIVES AND OTHER COUNTRY REGULATIONS AS DESCRIBED IN GS-47-0004.
2. MATERIAL:
HOUSING: HIGH-TEMP THERMOPLASTIC WITH GLASS FILLED, UL 94 V-0, BLACK.
POWER CONTACT: HIGH CONDUCTIVITY COPPER ALLOY.
SIGNAL CONTACT: COPPER ALLOY.
3. PLATING SPECIFICATION : 10064183.
4. MANUFACTURER'S NAME, DATE CODE AND OPTIONAL P/N TO BE MARKED ON THIS SURFACE. THE MARK CAN BE OMITTED IF THERE IS NOT ENOUGH SPACE ON THIS SURFACE.
5. PRODUCT SPECIFICATION : GS-12-149.
APPLICATION SPECIFICATION : BUS-20-067.
PRODUCT PACKAGE SPECIFICATION: BUS-14-437.
6. PACKAGED IN TRAYS.
7. ALL HOLE DIAMETERS ARE FINISHED HOLE SIZE.
8. MOUNTING HOLES, WHERE APPLICABLE, ARE UNPLATED.
9. $\varnothing 1.15 \pm 0.025$ MM DRILLED HOLE PLATED WITH 0.00762MM MIN SN OVER 0.0254-0.0762MM CU PLATING TO ACHIEVE A 1.02 ± 0.07 MM HOLE.
10. DENOTES CONNECTOR KEEP OUT ZONE.
11. DATUM AND BASIC DIMENSIONS ARE ESTABLISHED BY CUSTOMER.
12. THE HOUSING WILL WITHSTAND EXPOSURE TO 260 °C PEAK TEMPERATURE FOR 10 SECONDS IN A WAVE SOLDER APPLICATION.

spec ref		SPEC_REF: I		dr	Yun-Ping Zhu	2018/01/31	projection 	MM 	size	A4	scale	1:1
tolerance std		TOLERANCES UNLESS OTHERWISE SPECIFIED		eng	Yun-Ping Zhu	2018/02/27			ecn no	-		
ISO 406				chr	Feng Zheng	2018/02/27						
ISO 1101				appr	Pei-Ming Zheng	2018/02/27	product family	PwrBlade		rel level	Released	
surface	linear	0.X	± 0.50	Amphenol FCi	title	48S VERTICAL STB HEADER		dwg no	51952-341		rev	A
		0.XX	± 0.25									
0.XXX	± 0.10											
ISO 1302	angular	0°	$\pm 2^\circ$	cat. no.	-	Product - Customer Drw		sheet 4 of 4				