

LTM4691

Low V_{IN} , High Efficiency, Dual 2A Step-down μ Module DC/DC Converter

DESCRIPTION

Demonstration circuit 2910A is low V_{IN} , high efficiency, and dual 2A output μ Module DC/DC converter. The board operates by default at a fixed 2MHz and can be synchronized from 1MHz to 3MHz via the MODE/SYNC pin. With its high switching frequency and current mode architecture, a fast transient response to line and load changes is possible without sacrificing stability. The DC2910A can be used in forced continuous mode or pulse skip mode for low noise, or in burst mode operation for

high efficiency at light loads. The demo board features the [LTM®4691](#), which is available in a low profile 3mm x 4mm x 1.2mm LGA package. Please see the LTM4691 datasheet for more detailed information.

It is recommended to read the data sheet for the LTM4691 prior to making any changes to the DC2910A.

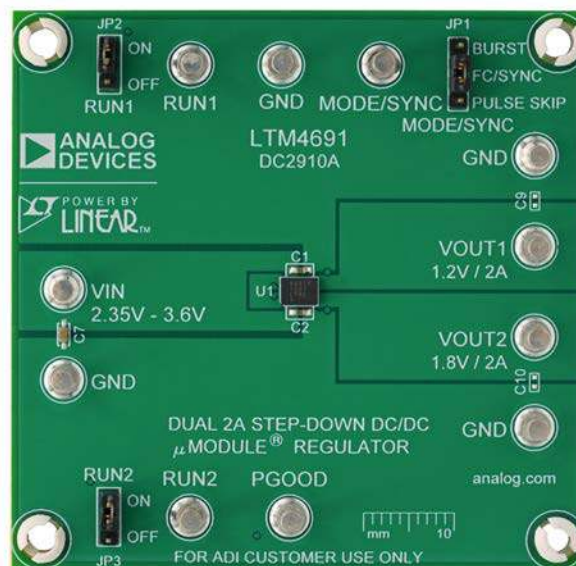
[Design files for this circuit board are available.](#)

All registered trademarks and trademarks are the property of their respective owners.

PERFORMANCE SUMMARY Specifications are at $T_A = 25^\circ\text{C}$

PARAMETER	CONDITIONS	VALUE
Input Voltage Range		2.35V to 3.6V
Output Voltage, V_{OUT}	$V_{IN} = 2.35\text{V} - 3.6\text{V}$, $I_{OUT} = 0\text{A to } 2\text{A}$	$V_{OUT1} = 1.2\text{V}$ $V_{OUT2} = 1.8\text{V}$
Maximum Output Current, I_{OUT}	$V_{IN} = 2.35\text{V} - 3.6\text{V}$	2A
Typical Efficiency	$V_{IN} = 3.3\text{V}$, $V_{OUT1} = 1.2\text{V}$, $I_{OUT} = 2\text{A}$ $V_{IN} = 3.3\text{V}$, $V_{OUT2} = 1.8\text{V}$, $I_{OUT} = 2\text{A}$	84% 88%
Peak Efficiency	$V_{IN} = 3.3\text{V}$, $V_{OUT1} = 1.2\text{V}$ $V_{IN} = 3.3\text{V}$, $V_{OUT2} = 1.8\text{V}$	89% 92%
Switching Frequency		2MHz

BOARD PHOTO



QUICK START PROCEDURE

Demonstration circuit 2910A is easy to set up to evaluate the performance of the LTM4691. Refer to Figure 1 for the proper measurement equipment setup and follow the procedure below.

1. With power off, connect the input power supply to V_{IN} (2.35V-3.6V) and GND (input return).
2. Connect the output loads between V_{OUT} and GND (Initial load: no load). Refer to Figure 1.
3. Connect the DVMs to the input and output.
4. Check the default jumper position: JP2 (RUN1): OFF; JP3 (RUN2): OFF.
5. Turn on the input power supply and adjust voltage to 2.35V – 3.6V;
NOTE: Make sure that the input voltage does not exceed 4.0V.
6. Change the following jumpers' position: JP2: ON; JP3: ON.

7. Check for the proper output voltages from V_{OUT} to GND turrets.
8. Once the proper output voltage is established, adjust the loads within the operating range and measure the efficiency, output ripple voltage and other parameters.
9. After completing all tests, adjust the load to 0A, power off the input power supply.

NOTES:

1. When measuring the output or input voltage ripple, do not use the long ground lead on the oscilloscope probe. See Figure 3 for the proper scope probe technique. Short, stiff leads need to be soldered to the (+) and (-) terminals of an output capacitor. The probe's ground ring needs to touch the (-) lead and the probe tip needs to touch the (+) lead.

QUICK START PROCEDURE

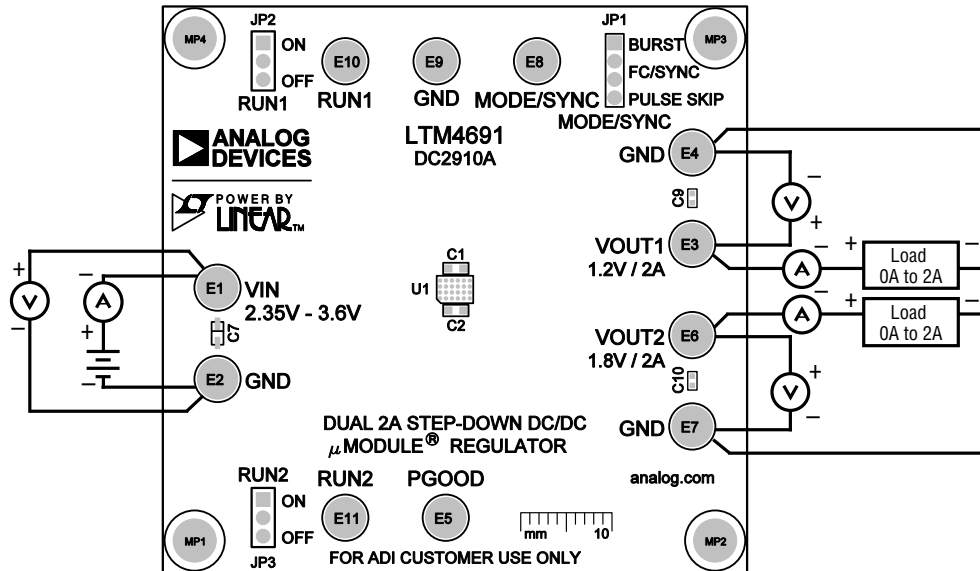


Figure 1. Proper Measurement Equipment Setup

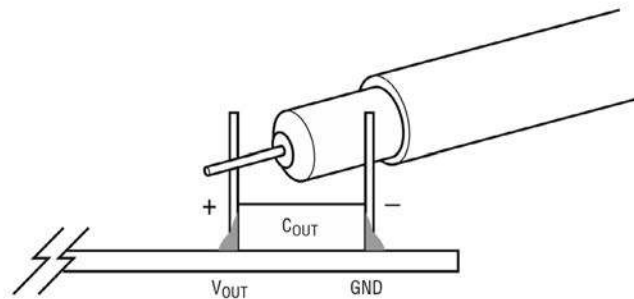


Figure 2. Measuring Output Voltage Ripple

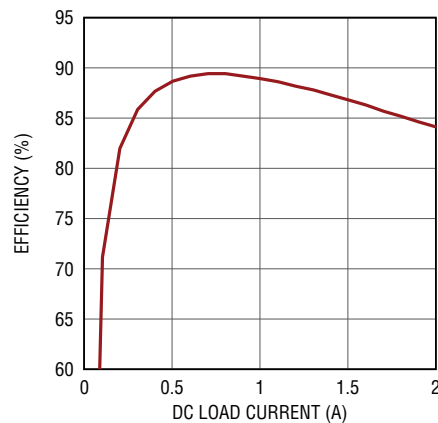


Figure 3. Efficiency vs. Load Current at $V_{IN} = 3.3V$, $V_{OUT1} = 1.2V$, $f_{sw} = 2MHz$

QUICK START PROCEDURE

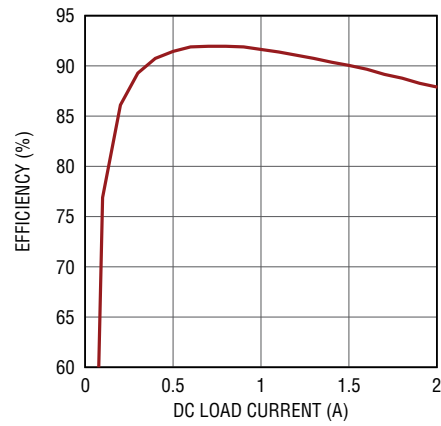


Figure 4. Efficiency vs. Load Current at $V_{IN} = 3.3V$, $V_{OUT2} = 1.8V$, $f_{SW} = 2MHz$

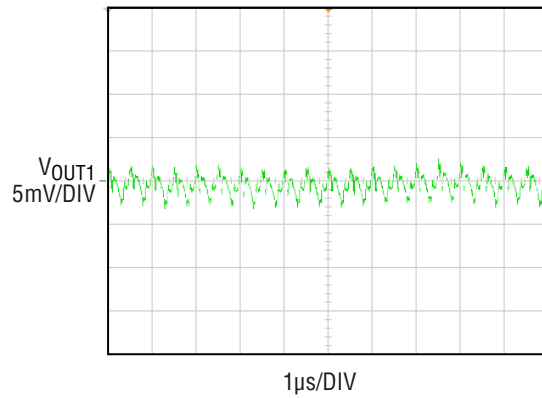


Figure 5. Output Voltage Ripple at $V_{IN} = 3.3V$, $V_{OUT1} = 1.2V$, $f_{SW} = 2MHz$

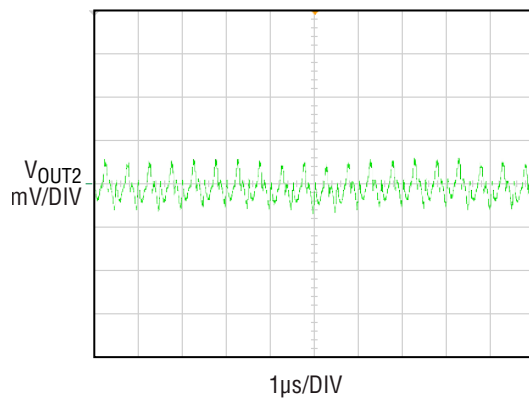


Figure 6. Output Voltage Ripple at $V_{IN} = 3.3V$, $V_{OUT2} = 1.8V$, $f_{SW} = 2MHz$

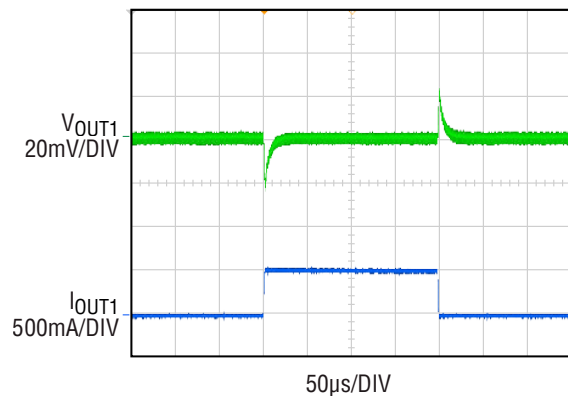


Figure 7. Load Step at $V_{IN} = 3.3V$, $V_{OUT1} = 1.2V$, $f_{SW} = 2MHz$

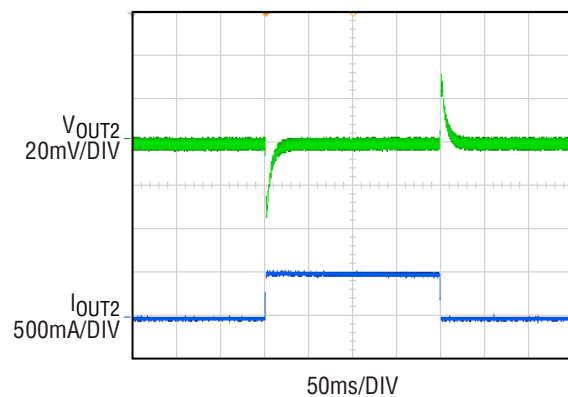


Figure 8. Load Step at $V_{IN} = 3.3V$, $V_{OUT2} = 1.8V$, $f_{SW} = 2MHz$

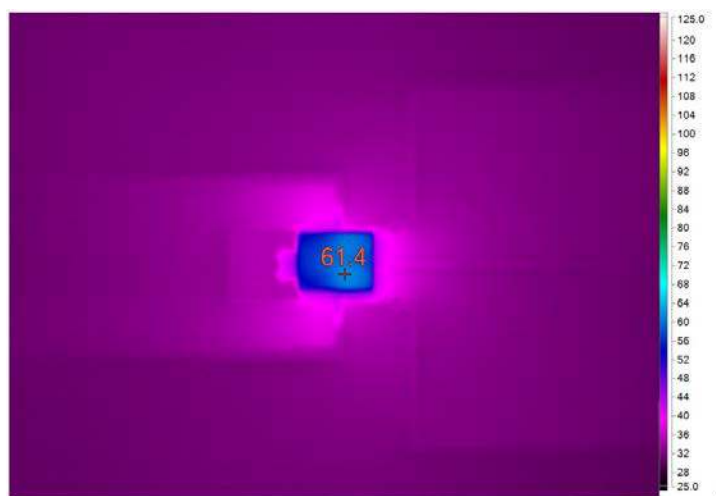


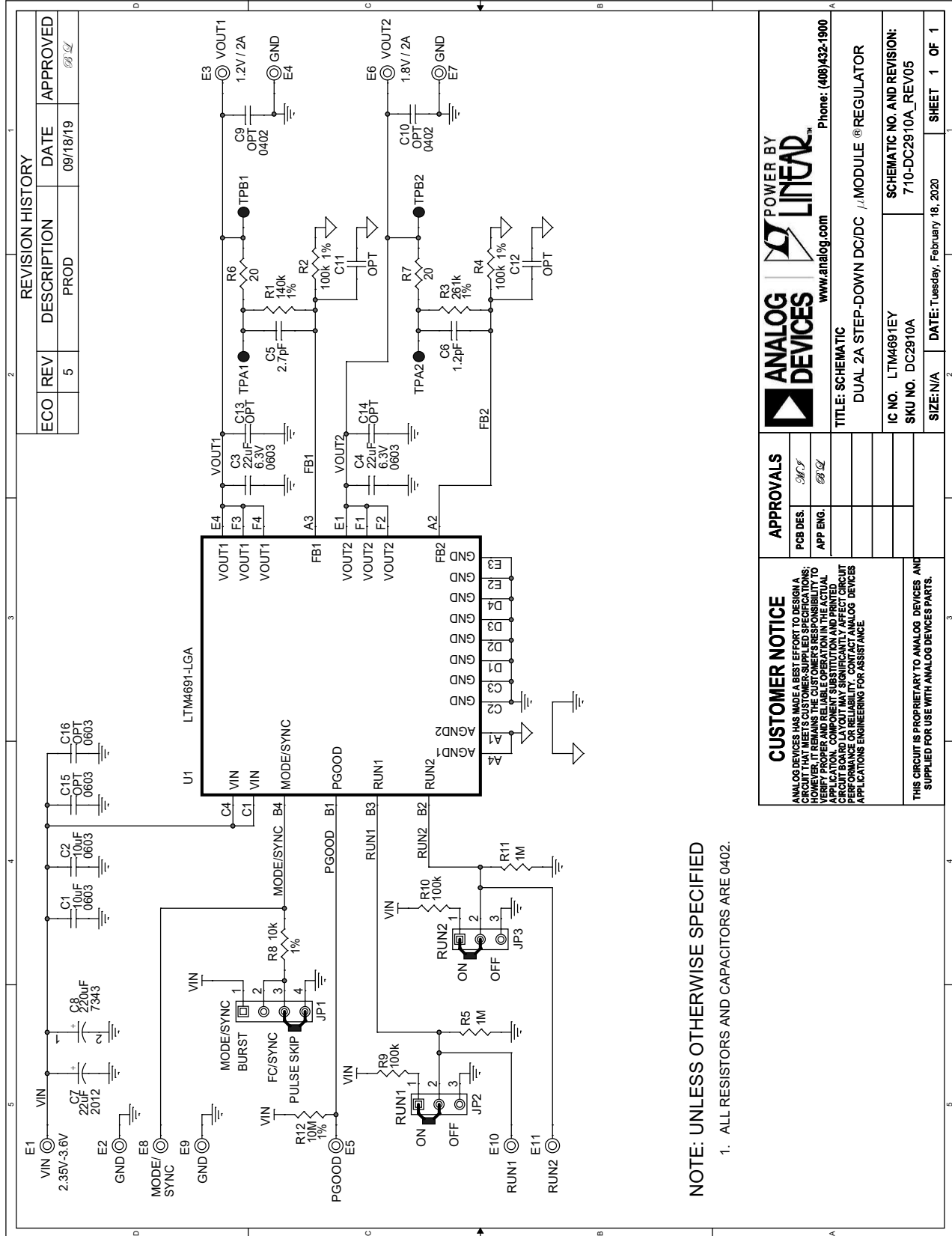
Figure 9. Thermal performance at $V_{IN} = 3.3V$, $V_{OUT1} = 1.2V$, $V_{OUT2} = 1.8V$, $I_{OUT1} = 2A$, $I_{OUT2} = 2A$ $T_A = 23^\circ C$, No Forced Airflow

DEMO MANUAL DC2910A

PARTS LIST

ITEM	QTY	REFERENCE	PART DESCRIPTION	MANUFACTURER/PART NUMBER
Required Circuit Components				
1	2	C1, C2	CAP, 10uF, X5R, 16V, 10%, 0603	MURATA, GRM188R61C106KAALD
2	2	C3, C4	CAP, 22uF, X6S, 6.3V, 20%, 0603	MURATA, GRM188C80J226ME15D
3	1	C5	CAP, 2.7pF, C0G, 50V, +/-0.25pF, 0402	MURATA, GJM1555C1H2R7CB01D
4	1	C6	CAP, 1.2pF, C0G, 50V, +/-0.05pF, 0402	MURATA, GJM1555C1H1R2WB01D
5	1	C7	CAP, 22uF TANT. POSCAP, 6.3V, 20%, 2012 (0805) S09, 150mOHM, TPU, NO SUBS. ALLOWED	KEMET, T529P226M006AAE150
6	1	C8	CAP, 220uF, TANT. POSCAP, 6.3V, 20%, 7343, 18mOHMS, TPE, NO SUBS. ALLOWED	PANASONIC, 6TPE220MI
7	1	R1	RES., 140k OHMS, 1%, 1/16W, 0402, AEC-Q200	VISHAY, CRCW0402140KFKED
8	2	R2, R4	RES., 100k OHMS, 1%, 1/10W, 0402, AEC-Q200	PANASONIC, ERJ2RKF1003X
9	1	R3	RES., 261k OHMS, 1%, 1/16W, 0402	VISHAY, CRCW0402261KFKED
10	2	R5, R11	RES., 1M OHM, 5%, 1/16W, 0402	VISHAY, CRCW04021M00JNED
11	2	R6, R7	RES., 20 OHMS, 1%, 0.063W, 0402	VISHAY, CRCW040220R0FKED
12	1	R8	RES., 10k OHMS, 1%, 1/10W, 0402	PANASONIC, ERJ2RKF1002X
13	2	R9, R10	RES., 100k OHMS, 5%, 1/16W, 0402, AEC-Q200	VISHAY, CRCW0402100KJNED
14	1	R12	RES., 10M OHMS, 1%, 1/16W, 0402	VISHAY, CRCW040210M0FKED
15	1	U1	IC, Dual 2A Step-Down uMODULE REG, 24-PIN LGA	ANALOG DEVICES, LTM4691EY#PBF
Additional Demo Board Circuit Components				
1	0	C9-C12	CAP, OPTION, 0402	
2	0	C13-C16	CAP, OPTION, 0603	
Hardware: For Demo Board Only				
1	11	E1-E11	TEST POINT, TURRET, 0.094", MTG. HOLE	MILL-MAX, 2501-2-00-80-00-00-07-0
2	2	JP2, JP3	CONN., HDR, MALE, 1x3, 2mm, VERT, STR, THT	WURTH ELEKTRONIK, 62000311121
3	4	MP1-MP4	STANDOFF, NYLON, SNAP-ON, 0.375"	KEYSTONE, 8832
4	3	XJP1-XJP3	CONN., SHUNT, FEMALE, 2 POS, 2mm	WURTH ELEKTRONIK, 60800213421

SCHEMATIC DIAGRAM



REVISION HISTORY				
ECO	REV	DESCRIPTION	DATE	APPROVED
	5	PROD	09/18/19	<i>[Signature]</i>

ANALOG DEVICES | **POWER BY LINEAR™**

www.analog.com | Phone: (408)432-1900

TITLE: SCHEMATIC

DUAL 2A STEP-DOWN DC/DC μ MODULE $\text{\textcircled{R}}$ REGULATOR

APPROVALS	
PCB DES.	<i>[Signature]</i>
APP ENG.	<i>[Signature]</i>

IC NO. LTM4691EY	SCHEMATIC NO. AND REVISION:
SKU NO. DC2910A	710-DC2910A_REV05
SIZE: N/A	DATE: Tuesday, February 18, 2020
	SHEET 1 OF 1

CUSTOMER NOTICE
 ANALOG DEVICES HAS MADE A BEST EFFORT TO DESIGN AND MANUFACTURE THIS PRODUCT TO BE RELIABLE. HOWEVER, IT REMAINS THE CUSTOMER'S RESPONSIBILITY TO VERIFY PROPER AND RELIABLE OPERATION IN THE ACTUAL APPLICATION. COMPONENT SUBSTITUTION AND PRINTED CIRCUIT BOARD MANUFACTURING VARIATIONS MAY AFFECT CIRCUIT PERFORMANCE OR RELIABILITY. CONTACT ANALOG DEVICES APPLICATIONS ENGINEERING FOR ASSISTANCE.

THIS CIRCUIT IS PROPRIETARY TO ANALOG DEVICES AND SUPPLIED FOR USE WITH ANALOG DEVICES PARTS.

NOTE: UNLESS OTHERWISE SPECIFIED
 1. ALL RESISTORS AND CAPACITORS ARE 0402.



ESD Caution

ESD (electrostatic discharge) sensitive device. Charged devices and circuit boards can discharge without detection. Although this product features patented or proprietary protection circuitry, damage may occur on devices subjected to high energy ESD. Therefore, proper ESD precautions should be taken to avoid performance degradation or loss of functionality.

Legal Terms and Conditions

By using the evaluation board discussed herein (together with any tools, components documentation or support materials, the "Evaluation Board"), you are agreeing to be bound by the terms and conditions set forth below ("Agreement") unless you have purchased the Evaluation Board, in which case the Analog Devices Standard Terms and Conditions of Sale shall govern. Do not use the Evaluation Board until you have read and agreed to the Agreement. Your use of the Evaluation Board shall signify your acceptance of the Agreement. This Agreement is made by and between you ("Customer") and Analog Devices, Inc. ("ADI"), with its principal place of business at One Technology Way, Norwood, MA 02062, USA. Subject to the terms and conditions of the Agreement, ADI hereby grants to Customer a free, limited, personal, temporary, non-exclusive, non-sublicensable, non-transferable license to use the Evaluation Board FOR EVALUATION PURPOSES ONLY. Customer understands and agrees that the Evaluation Board is provided for the sole and exclusive purpose referenced above, and agrees not to use the Evaluation Board for any other purpose. Furthermore, the license granted is expressly made subject to the following additional limitations: Customer shall not (i) rent, lease, display, sell, transfer, assign, sublicense, or distribute the Evaluation Board; and (ii) permit any Third Party to access the Evaluation Board. As used herein, the term "Third Party" includes any entity other than ADI, Customer, their employees, affiliates and in-house consultants. The Evaluation Board is NOT sold to Customer; all rights not expressly granted herein, including ownership of the Evaluation Board, are reserved by ADI. CONFIDENTIALITY. This Agreement and the Evaluation Board shall all be considered the confidential and proprietary information of ADI. Customer may not disclose or transfer any portion of the Evaluation Board to any other party for any reason. Upon discontinuation of use of the Evaluation Board or termination of this Agreement, Customer agrees to promptly return the Evaluation Board to ADI. ADDITIONAL RESTRICTIONS. Customer may not disassemble, decompile or reverse engineer chips on the Evaluation Board. Customer shall inform ADI of any occurred damages or any modifications or alterations it makes to the Evaluation Board, including but not limited to soldering or any other activity that affects the material content of the Evaluation Board. Modifications to the Evaluation Board must comply with applicable law, including but not limited to the RoHS Directive. TERMINATION. ADI may terminate this Agreement at any time upon giving written notice to Customer. Customer agrees to return to ADI the Evaluation Board at that time. LIMITATION OF LIABILITY. THE EVALUATION BOARD PROVIDED HEREUNDER IS PROVIDED "AS IS" AND ADI MAKES NO WARRANTIES OR REPRESENTATIONS OF ANY KIND WITH RESPECT TO IT. ADI SPECIFICALLY DISCLAIMS ANY REPRESENTATIONS, ENDORSEMENTS, GUARANTEES, OR WARRANTIES, EXPRESS OR IMPLIED, RELATED TO THE EVALUATION BOARD INCLUDING, BUT NOT LIMITED TO, THE IMPLIED WARRANTY OF MERCHANTABILITY, TITLE, FITNESS FOR A PARTICULAR PURPOSE OR NON-INFRINGEMENT OF INTELLECTUAL PROPERTY RIGHTS. IN NO EVENT WILL ADI AND ITS LICENSORS BE LIABLE FOR ANY INCIDENTAL, SPECIAL, INDIRECT, OR CONSEQUENTIAL DAMAGES RESULTING FROM CUSTOMER'S POSSESSION OR USE OF THE EVALUATION BOARD, INCLUDING BUT NOT LIMITED TO LOST PROFITS, DELAY COSTS, LABOR COSTS OR LOSS OF GOODWILL. ADI'S TOTAL LIABILITY FROM ANY AND ALL CAUSES SHALL BE LIMITED TO THE AMOUNT OF ONE HUNDRED US DOLLARS (\$100.00). EXPORT. Customer agrees that it will not directly or indirectly export the Evaluation Board to another country, and that it will comply with all applicable United States federal laws and regulations relating to exports. GOVERNING LAW. This Agreement shall be governed by and construed in accordance with the substantive laws of the Commonwealth of Massachusetts (excluding conflict of law rules). Any legal action regarding this Agreement will be heard in the state or federal courts having jurisdiction in Suffolk County, Massachusetts, and Customer hereby submits to the personal jurisdiction and venue of such courts. The United Nations Convention on Contracts for the International Sale of Goods shall not apply to this Agreement and is expressly disclaimed.