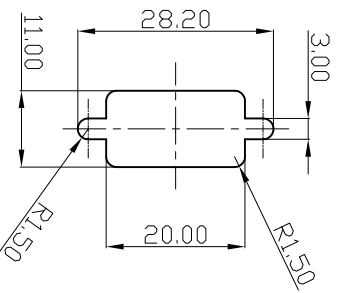


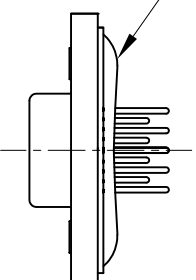
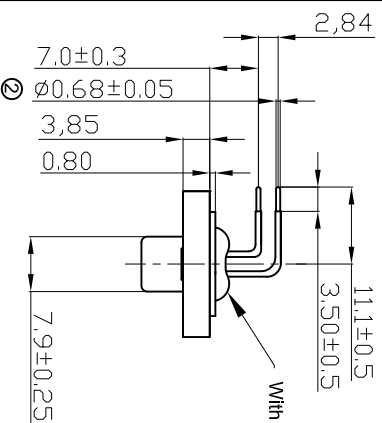
A

Panel Thickness
Screw L=5.0 For Panel Thickness
Under 1.2mm
Screw L=6.0 For Panel Thickness
Between 1.2-2.0mm



D

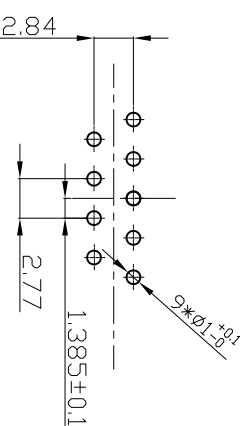
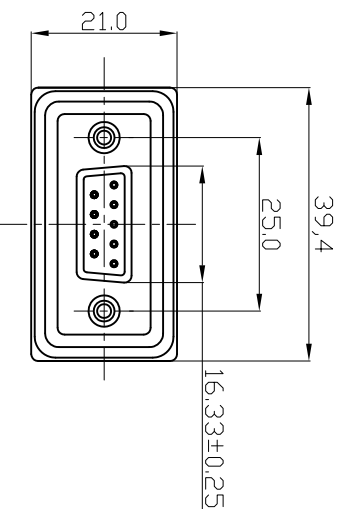
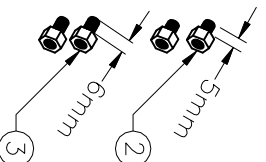
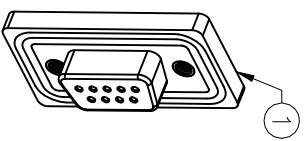
Recommended Panel Cut-Out



NOTES:

MATERIAL

1. Insulator Material: Black, NYLON+G/F
2. Contact Material : Copper Alloy
3. Plating : Gold Plating
4. Waterproof Rate: IP67
5. Do Mating Test After Glued



E

9 Pin Female Connector
PCB Pin Layout
Scale 2:1

F

ROHS compliant

Scale	1:1								
TOLERANCE									
X.X	±0.25								
X.XX	±0.10								
X.XXX	±0.05								
DIM	TOL	②	Cancel LOGO and change dimension	23.01.2018	Tom				
ANGLE	±1°	①	Drawn	17.12.2008	JACK				
X.X°	±X°								
Angle	TOL		Modification						

ASSMANN
components

Customer-No.

ASSMANN WSW-No.
A-DF 09 AA-WP

Drawing-No.
ASS 3229 CO

Replace

rev02

Sheet

1 2 3 4 5 6 7

H G F E D C B A