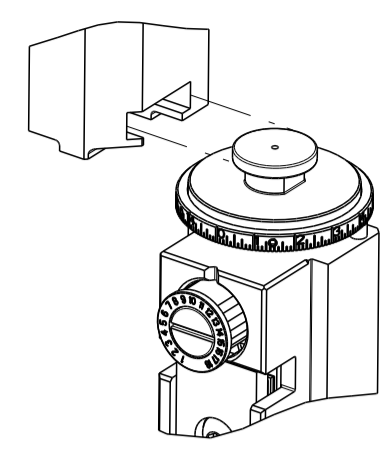


PART NUMBER	REVISION	DESCRIPTION	FEED TYPE
2151526-1	N	FINE CRIMP HEIGHT ADJUST	MECHANICAL
2151526-2	N	FINE CRIMP HEIGHT ADJUST	PNEUMATIC
5-2151526-1	N	SEAL STRIPPER CRIMPER TERMINATING UNIT	MECHANICAL
5-2151526-2	N	SEAL STRIPPER CRIMPER TERMINATING UNIT	PNEUMATIC
7-2151526-1	N	MECHANICAL AND CRIMP TOOLING KIT	MECHANICAL
7-2151526-2	N	PNEUMATIC AND CRIMP TOOLING KIT	PNEUMATIC
7-2151526-7	J	CRIMP TOOLING KIT	-

ATLANTIC VERSION TERMINATOR INTERFACE ADAPTER



APPLICATOR DATA		
CRIMP	SIZE	TYPE
WIRE	0.99 mm [.039]	F
INSUL	1.52 mm [.060]	F

APPLICATOR INSTRUCTIONS 408-35042

TERMINAL DATA: HIROSE TERMINAL HIROSE CRIMP SPECIFICATION			
TERMINAL NAME: DF11 SERIES, SOCKET			
WIRE STRIP LENGTH	TERMINAL INSULATION DIAMETER RANGE		
1.70-2.30 mm [.067-.091 IN]	Ø0.90-1.45 mm [.035-.057 IN]		
TERMINAL APPLICATION SPECIFICATION	TAD-P-0506 Rev 1	AT9106	
TERMINALS APPLIED			
TE TERMINAL	HIROSE TERMINAL	TE TERMINAL	HIROSE TERMINAL
286617-1	DF11-2428-SCF	286617-3	DF11-2428-SCFA
286617-2	DF11A-2428-SCF		

WIRE SIZE	CRIMP HEIGHT mm [INCH]	CRIMP HEIGHT REFERENCE SETTING
24 AWG	0.63 +/- 0.03 [.025 +/- .001]	7.2
26 AWG	0.59 +/- 0.03 [.023 +/- .001]	7.6
28 AWG	0.55 +/- 0.03 [.022 +/- .001]	8.1

- △ RECOMMENDED SPARE PARTS
- △ REFER TO SUPPLIED INSTRUCTION SHEET FOR CLEANING, LUBRICATION AND STORAGE OF APPLICATOR.
- △ APPLY PART NUMBER 1-23419-5 LOCTITE TO THREADS OF ITEM 180. APPLY PART NUMBER 2-23419-6 LOCTITE TO THREADS OF ITEM 242.
- △ CRIMP HEIGHT REFERENCE SETTING WAS THE SETTING USED WHEN THE APPLICATOR WAS QUALIFIED AT THE FACTORY. ADJUSTMENT MAY BE NECESSARY WHEN RUNNING APPLICATOR IN THE FIELD.
- 5. UNLESS SPECIFIED OTHERWISE TORQUE VALUES SHALL BE USED PER DOCUMENT 101-35000.
- △ TERMINAL LUBRICANT IS RECOMMENDED.

*WARNING
ON INSTALLATION, SET WIRE DISC TO CRIMP HEIGHT REFERENCE SETTING FOR LARGEST WIRE SIZE. CRIMP HEIGHT REFERENCE SETTINGS GREATER THAN THE VALUE SHOWN MAY CAUSE DAMAGE TO THE CRIMP TOOLING, REFER TO THE INSTRUCTION SHEET FOR PROPER SETUP AND ADJUSTMENTS.

ATLANTIC VERSION
Shown on sheets 1 of 4 & 2 of 4
(Pacific version shown on sheets 3 of 4 & 4 of 4)

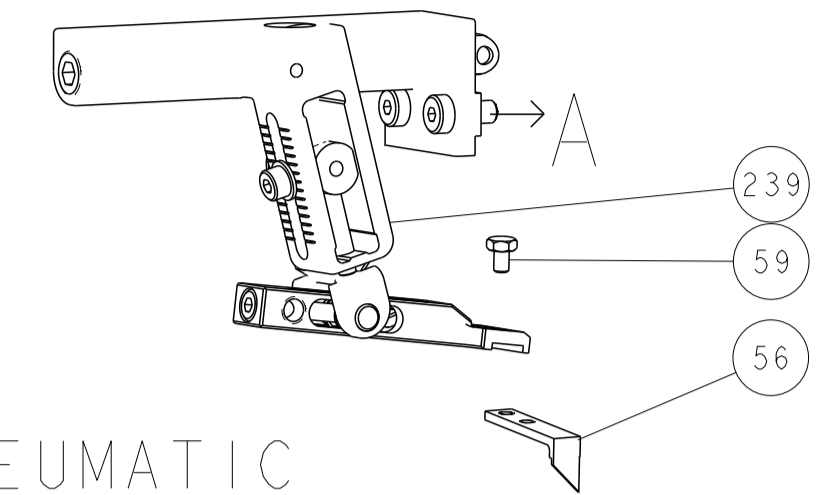
LOC	DIST	REVISIONS					
A	66	P	LTN	DESCRIPTION	DATE	OWN	APVD
		K		ECR-20-006903	13MAY2020	TB	GB
		L		ECR-21-004490	16APR2021	MZ	YY
		M		ECR-22-154319	30SEP2022	FZ	TE
		N		ECR-22-160667	08DEC2022	FZ	TE

-	-	-	1	1	-	-	1803515-3	RAM ASSEMBLY, SF ATLANTIC	293
-	-	-	1	1	-	-	2-1803583-1	APPLICATOR BASIC ASSEMBLY, SF	292
-	1	1	1	1	1	1	2-2119791-2	DEPRESSOR, WIRE	286
-	1	-	1	-	1	-	2119641-1	FEED CAM, AIR FEED	248
-	1	1	1	1	1	1	2119082-4	CAM, SNAIL, INSULATION ADJUSTMENT	244
-	1	1	1	1	1	1	2079764-1	WASHER, WAVE SPRING, CREST-TO-CREST	243
-	1	1	1	1	1	1	2119083-1	RETAINER, INSULATION DIAL	242
-	1	1	1	1	1	1	7-18023-7	SCR, SKT HD CAP M3 X 4.0	241
-	-	1	-	1	-	1	2119580-1	MECHANICAL FEED ASSEMBLY	239
-	1	-	1	-	1	-	2844940-1	AIR FEED MODULE	238
-	-	-	1	1	-	-	1803237-2	STRIPPER, SIDE FEED	182
-	-	-	1	1	-	-	1-5018030-0	NUT, HEX, REG, RoHS, M3.5	181
-	-	-	1	1	-	-	1-1752354-5	STANDOFF, HOLD-DOWN	180
-	-	-	1	1	-	-	993111-1	PIN, SLOTTED SPRING 3.0 X 20.0	177
-	-	-	1	1	-	-	5-22280-0	SPRING, COMPRESSION	176
-	-	-	1	1	-	-	1752353-3	GUIDE PIN, HOLDDOWN	175
-	-	-	1	1	-	-	1901680-2	GUIDE PIN, HOLDDOWN	174
-	REF	REF	REF	REF	REF	REF	994970-2	COUNTER, MAGNETIC	164
-	1	1	1	1	1	1	2119955-1	ASSY, LUBRICATOR, SIDE FEED	113
-	1	1	1	1	1	1	2844908-1	SCREW, LOCKING	99
-	1	1	1	1	1	1	2844907-1	POST, LOCKING	98
-	1	1	1	1	1	1	1-1803078-2	SPACER, PRECISION	82
-	1	1	1	1	1	1	1803607-3	DOCUMENTATION PACKAGE	71
-	1	1	1	1	1	1	2-2119791-2	DEPRESSOR, WIRE	70
-	1	1	1	1	1	1	2119740-1	TAG, IDENTIFICATION	67
-	2	2	2	2	2	2	2168078-1	SCREW, DRIVE, RH, RoHS, 2 x .188	66
-	1	1	1	1	1	1	2168083-2	SCR, SKT HD CAP, RoHS, M4 X 8.0	60
-	1	1	1	1	1	1	5-18022-5	SCR, HEX HD CAP, M4 X 6.0	59
-	1	1	1	1	1	1	1338685-1	PAWL, FEED	56
-	4	4	4	4	4	4	2168083-3	SCR, SKT HD CAP, RoHS, M4 X 12.0	54
-	1	2	1	2	1	2	18023-9	SCR, SKT HD CAP M4 X 6.0	49
-	-	1	-	1	-	1	2119652-1	FEED CAM, PRE FEED	48
-	-	1	-	1	-	1	2119653-1	FEED CAM, POST FEED	47
-	1	1	-	-	1	1	1803583-9	APPLICATOR BASIC ASSEMBLY, SF	46
-	1	1	-	-	1	1	1803515-1	RAM ASSEMBLY, SF ATLANTIC	44
-	1	1	1	1	1	1	1803602-1	SCR, BHSC, RoHS (M8 X 25)	41
-	1	1	1	1	1	1	2-1752356-7	SUPPORT, TERMINAL	34
-	2	2	2	2	2	2	2079383-5	SCR, BHSC, RoHS (M4 X 20)	33
-	2	2	2	2	2	2	2-2844962-3	SPACER, CYLINDRICAL, STRIP GUIDE	30
-	1	1	1	1	1	1	2844992-1	ASSEMBLY, STRIP GUIDE	29
-	1	1	1	1	1	1	1320928-2	STRIP GUIDE	24
-	1	1	-	-	1	1	2168083-2	SCR, SKT HD CAP, RoHS, M4 X 8.0	21
-	2	2	1	1	2	2	1-18028-2	WASHER, FLAT, REG M4	20
-	1	1	-	-	1	1	2119533-3	STRIPPER, SIDE FEED	19
-	1	1	1	1	1	1	2119806-1	INSERT, SHEAR	13
-	1	1	1	1	1	1	3-22280-3	SPRING, COMPRESSION	12
-	1	1	1	1	1	1	1-356885-4	STOP, SHEAR	11
-	1	1	1	1	1	1	2119805-1	SHEAR HOLDER, FRONT	10
-	1	1	1	1	1	1	1803095-6	FLOATING SHEAR, FRONT	9
-	1	2	2	1	1	1	1803336-7	ANVIL, COMBINATION	8
-	-	-	-	-	-	-	-	-	7
-	-	-	-	-	-	-	-	-	6
-	1	1	1	1	1	1	1-2119757-8	DEPRESSOR, SHEAR	5
-	1	1	1	1	1	1	5-238011-5	BLOCK, CRIMPER SPACER	4
-	1	2	2	1	1	1	1-1803326-1	CRIMPER, INSULATION F	3
-	-	-	-	-	-	-	-	-	2
-	1	2	2	1	1	1	1803323-5	CRIMPER, WIRE PREMIUM	1

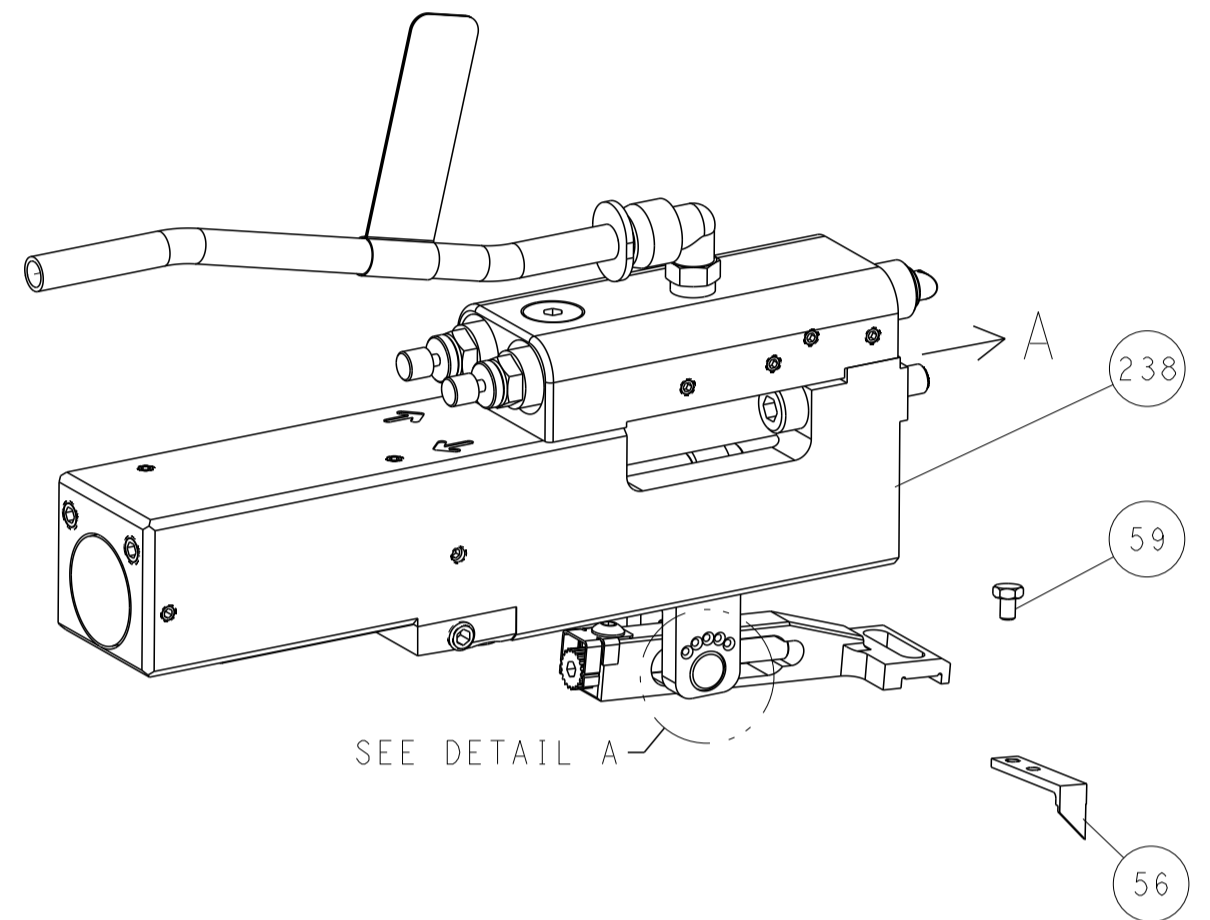
DIMENSIONS:		TOLERANCES UNLESS OTHERWISE SPECIFIED:		OWN	DATE	TE Connectivity	
mm	0 PLC ±	1 PLC ±	2 PLC ±	HOFFNER	11OCT2011	Harrisburg, PA 17105-3608	
	3 PLC ±	4 PLC ±	ANGLES ±	ELBIN	18OCT2011		
	FINISH			ELBIN	18OCT2011		
MATERIAL				PRODUCT SPEC		NAME	
				APPLICATION SPEC		OCEAN 2.0 Side Feed Applicator	
				WEIGHT		SIZE	CAGE CODE
						A1	00779
						DRAWING NO	2151526
						RESTRICTED TO	
						SCALE	1:2
						SHEET	1 of 4
						REV	N

LOC	DIST	REVISIONS					
A	66	P	LYN	DESCRIPTION	DATE	OWN	APVD
		-		SEE SHEET 1			

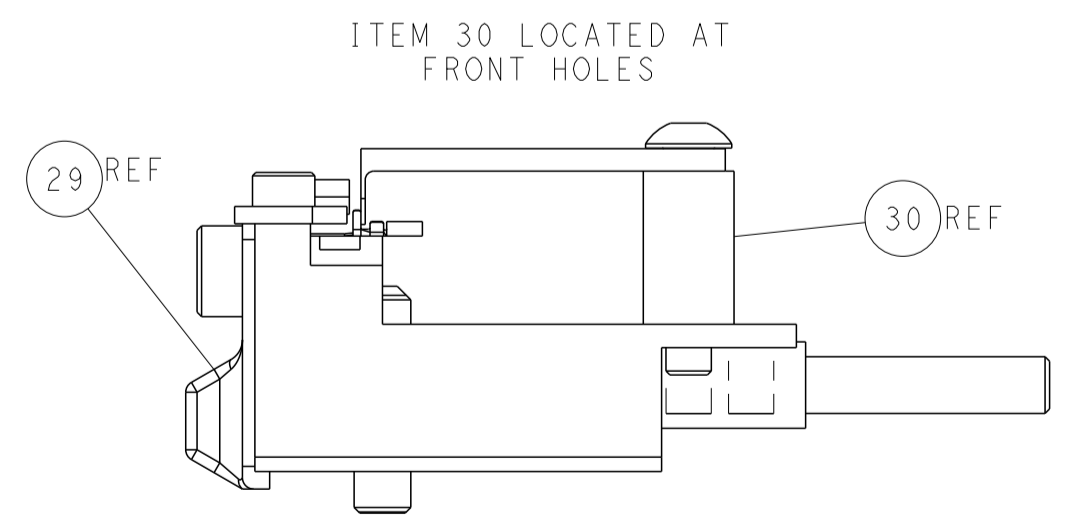
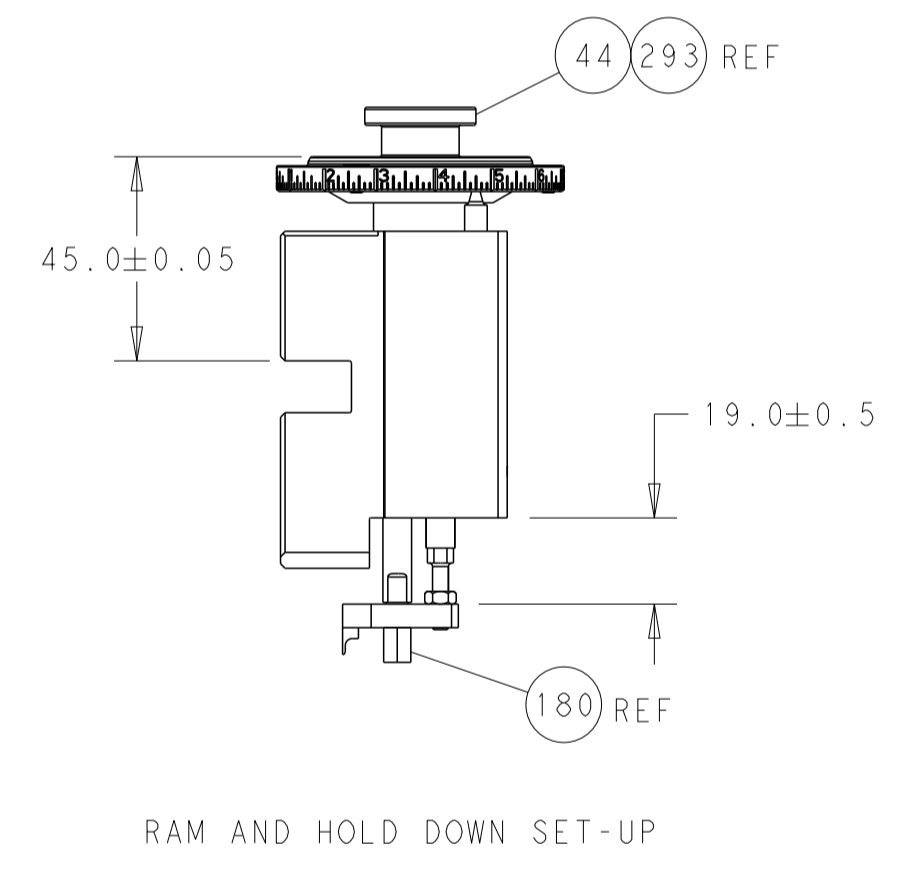
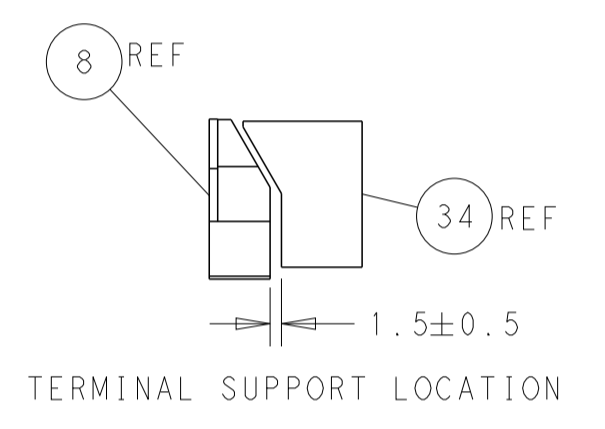
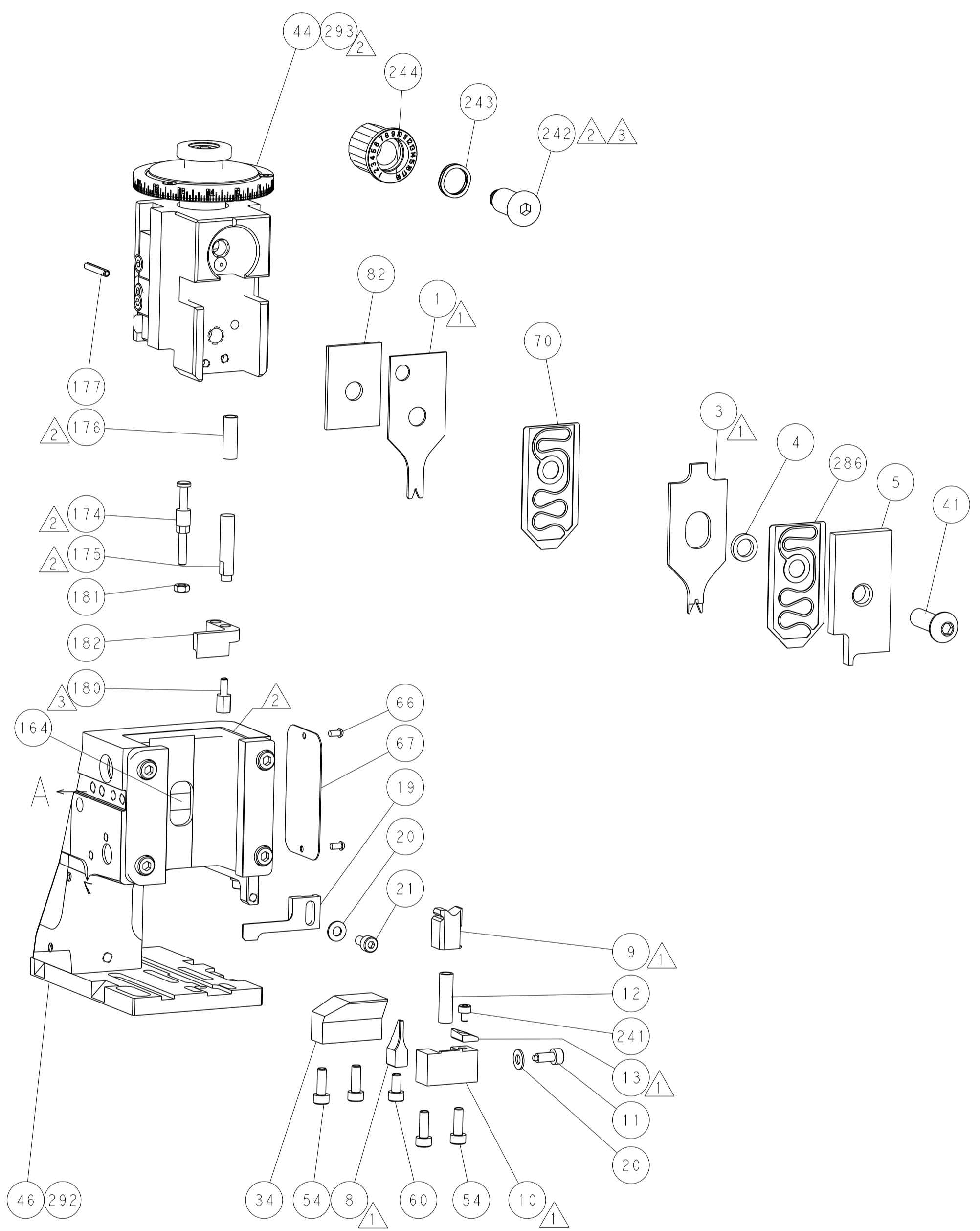
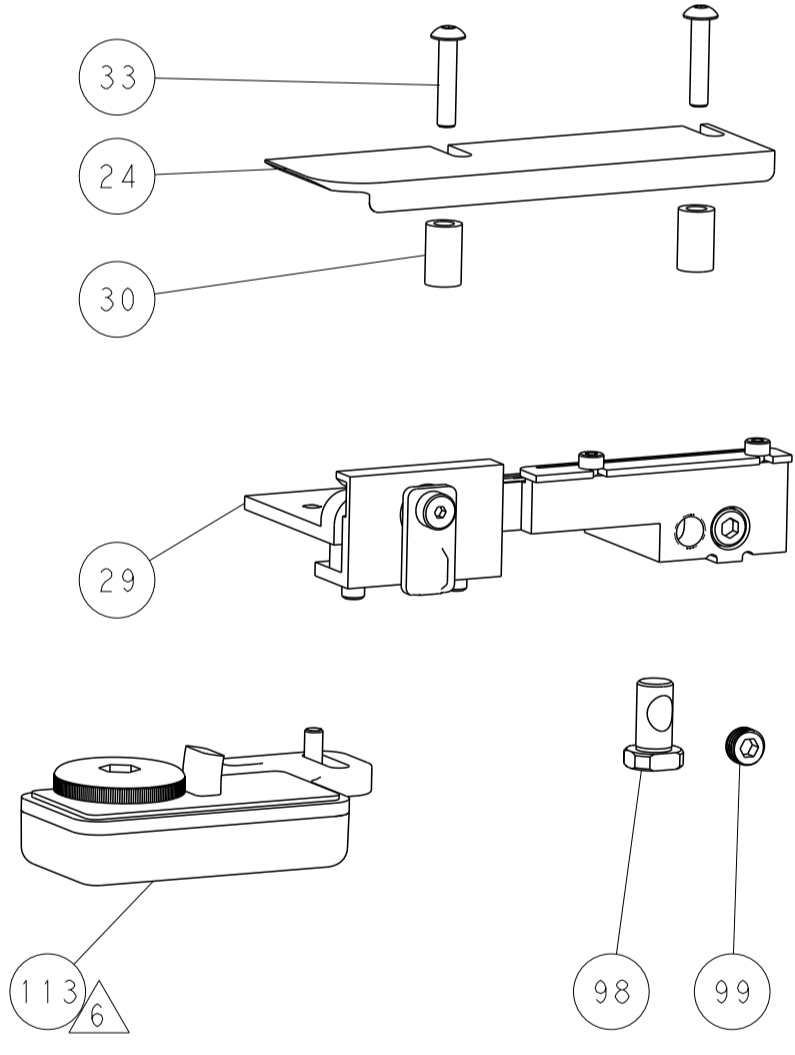
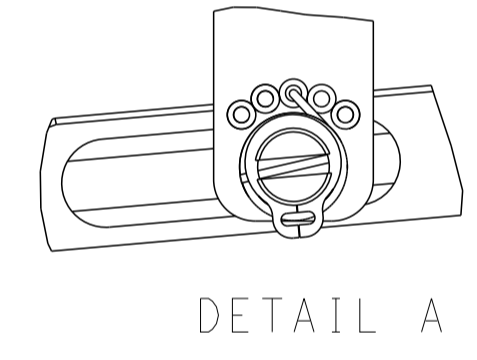
FEED TYPE MECHANICAL



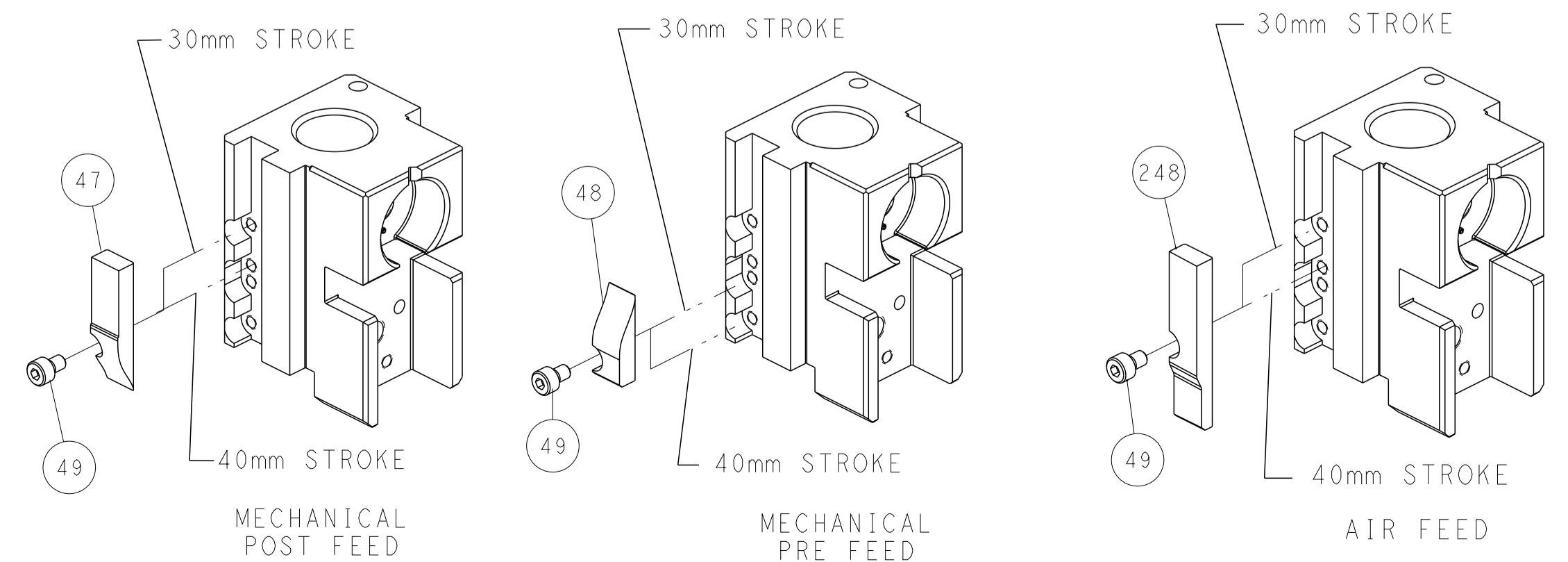
PNEUMATIC



FEED SPRING SETTING POSITION (SHOWN FROM REAR SIDE)



CAM POSITIONS

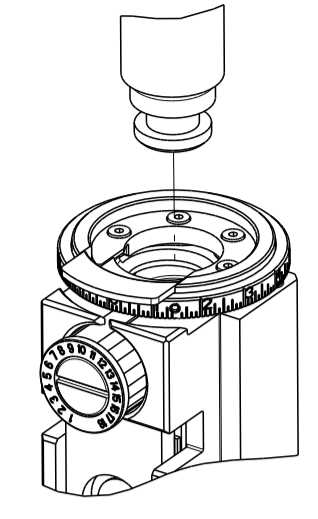


ATLANTIC VERSION
 Shown on sheets 1 of 4 & 2 of 4
 (Pacific version shown on sheets 3 of 4 & 4 of 4)

DIMENSIONS: mm 		TOLERANCES UNLESS OTHERWISE SPECIFIED: 0 PLC ± 1 PLC ± 2 PLC ± 3 PLC ± 4 PLC ± ANGLES ± FINISH		DWN: HOFFNER 17OCT2011 CHK: T. ELBIN 18OCT2011 APVD: T. ELBIN 18OCT2011 NAME: OCEAN 2.0 Side Feed Applicator SIZE: A1 CAGE CODE: 00779 DRAWING NO: 2151526 SCALE: 1:2 SHEET: 2 of 4 REV: N	
MATERIAL:		WEIGHT:		RESTRICTED TO:	

THIS DRAWING IS UNPUBLISHED.	RELEASED FOR PUBLICATION		
COPYRIGHT 20 BY TYCO ELECTRONICS CORPORATION. ALL RIGHTS RESERVED.			
PART NUMBER	REVISION	DESCRIPTION	FEED TYPE
2-2151526-1	N	FINE CRIMP HEIGHT ADJUST	MECHANICAL
2-2151526-2	N	FINE CRIMP HEIGHT ADJUST	PNEUMATIC
7-2151526-7	J	CRIMP TOOLING KIT	-

PACIFIC VERSION TERMINATOR
INTERFACE ADAPTER



APPLICATOR DATA		
CRIMP	SIZE	TYPE
WIRE	0.99 mm [.039]	F
INSUL	1.52 mm [.060]	F
APPLICATOR INSTRUCTIONS 408-35042		

TERMINAL DATA: HIROSE TERMINAL HIROSE CRIMP SPECIFICATION	
TERMINAL NAME: DF11 SERIES, SOCKET	
WIRE STRIP LENGTH 1.70-2.30 mm [.067-.091 IN]	TERMINAL INSULATION DIAMETER RANGE Ø0.90-1.45 mm [.035-.057 IN]
TERMINAL APPLICATION SPECIFICATION TAD-P-0506 Rev 1	AT9106
TERMINALS APPLIED	
TE TERMINAL	HIROSE TERMINAL
286617-1	DF11-2428-SCF
286617-2	DF11A-2428-SCF

WIRE SIZE	CRIMP HEIGHT mm [INCH]	CRIMP HEIGHT REFERENCE SETTING
24 AWG	0.63+/-0.03 [.025+/-0.001]	7.2
26 AWG	0.59+/-0.03 [.023+/-0.001]	7.6
28 AWG	0.55+/-0.03 [.022+/-0.001]	8.1

- RECOMMENDED SPARE PARTS
- REFER TO SUPPLIED INSTRUCTION SHEET FOR CLEANING, LUBRICATION AND STORAGE OF APPLICATOR.
- APPLY PART NUMBER 2-23419-6 LOCTITE TO THREADS OF ITEM 242.
- CRIMP HEIGHT REFERENCE SETTING WAS THE SETTING USED WHEN THE APPLICATOR WAS QUALIFIED AT THE FACTORY. ADJUSTMENT MAY BE NECESSARY WHEN RUNNING APPLICATOR IN THE FIELD.
- UNLESS SPECIFIED OTHERWISE TORQUE VALUES SHALL BE USED PER DOCUMENT 101-35000.
- TERMINAL LUBRICANT IS RECOMMENDED.

***WARNING**
ON INSTALLATION, SET WIRE DISC TO CRIMP HEIGHT REFERENCE SETTING FOR LARGEST WIRE SIZE. CRIMP HEIGHT REFERENCE SETTINGS GREATER THAN THE VALUE SHOWN MAY CAUSE DAMAGE TO THE CRIMP TOOLING, REFER TO THE INSTRUCTION SHEET FOR PROPER SETUP AND ADJUSTMENTS.

PACIFIC VERSION
Shown on sheets 3 of 4 & 4 of 4
(Atlantic version shown on sheets 1 of 4 & 2 of 4)

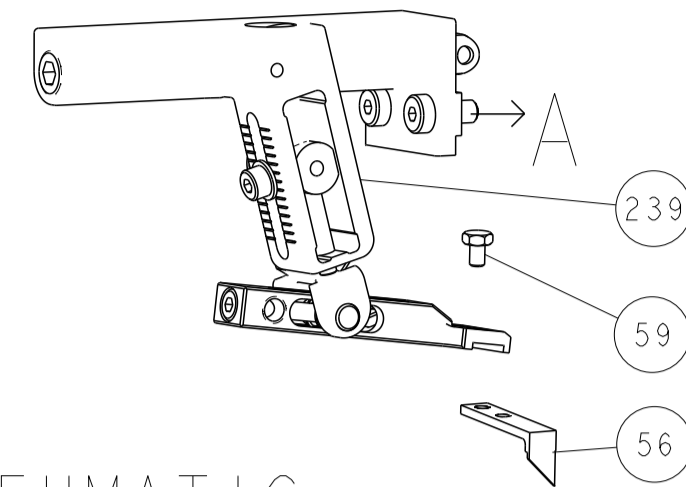
LOC	DIST	REV	DATE	BY	CHKD	APVD
A	66	-	-	-	-	-

REV	DATE	BY	CHKD	APVD	DESCRIPTION	ITEM NO
-	1	1	2-2119791-2		DEPRESSOR, WIRE	286
-	1	1	2119082-4		CAM, SNAIL, INSULATION ADJUSTMENT	244
-	1	1	2079764-1		WASHER, WAVE SPRING, CREST-TO-CREST	243
-	1	1	2119083-1		RETAINER, INSULATION DIAL	242
-	1	1	7-18023-7		SCR, SKT HD CAP M3 X 4.0	241
-	-	1	2119580-1		MECHANICAL FEED ASSEMBLY	239
-	1	-	2844940-1		AIR FEED MODULE	238
-	REF	REF	994970-2		COUNTER, MAGNETIC	164
-	1	-	2119641-2		FEED CAM, AIR FEED	151
-	1	1	2168083-8		SCR, SKT HD CAP, RoHS, M4 X 16	144
-	4	4	2168083-9		SCR, SKT HD CAP, RoHS, M4 X 20	143
-	-	1	2119653-2		FEED CAM, POST FEED	142
-	1	1	1-1803583-0		APPLICATOR BASIC ASSEMBLY, SF	141
-	1	1	1803516-1		RAM ASSEMBLY, SF PACIFIC	140
-	1	1	2119955-1		ASSY, LUBRICATOR, SIDE FEED	113
-	1	1	2844908-1		SCREW, LOCKING	99
-	1	1	2844907-1		POST, LOCKING	98
-	1	1	1-1803078-2		SPACER, PRECISION	82
-	1	1	1803607-3		DOCUMENTATION PACKAGE	71
-	1	1	2-2119791-2		DEPRESSOR, WIRE	70
-	1	1	2119740-1		TAG IDENTIFICATION	67
-	2	2	2168078-1		SCREW, DRIVE, RH, RoHS, 2 x .188	66
-	1	1	5-18022-5		SCR, HEX HD CAP, M4 X 6.0	59
-	1	1	1338685-1		PAWL, FEED	56
-	1	2	18023-9		SCR, SKT HD CAP M4 X 6.0	49
-	-	1	2119652-1		FEED CAM, PRE FEED	48
-	1	1	1803602-1		SCR, BHSC, RoHS (M8 X 25)	41
-	1	1	2-1752356-7		SUPPORT, TERMINAL	34
-	2	2	2079383-5		SCR, BHSC, RoHS (M4 X 20)	33
-	2	2	2-2844962-3		SPACER, CYLINDRICAL, STRIP GUIDE	30
-	1	1	2844992-1		ASSEMBLY, STRIP GUIDE	29
-	1	1	1320928-2		STRIP GUIDE	24
-	1	1	2168083-2		SCR, SKT HD CAP, RoHS, M4 X 8.0	21
-	2	2	1-18028-2		WASHER, FLAT, REG M4	20
-	1	1	2119533-3		STRIPPER, SIDE FEED	19
-	1	1	2119806-1		INSERT, SHEAR	13
-	1	1	3-22280-3		SPRING, COMPRESSION	12
-	1	1	1-356885-4		STOP, SHEAR	11
-	1	1	2119805-1		SHEAR HOLDER, FRONT	10
-	1	1	1803095-6		FLOATING SHEAR, FRONT	9
-	1	1	1803336-7		ANVIL, COMBINATION	8
-	-	-	-		-	7
-	-	-	-		-	6
-	1	1	1-2119757-8		DEPRESSOR, SHEAR	5
-	1	1	5-238011-5		BLOCK, CRIMPER SPACER	4
-	1	1	1-1803326-1		CRIMPER, INSULATION F	3
-	-	-	-		-	2
-	1	1	1803323-5		CRIMPER, WIRE PREMIUM	1

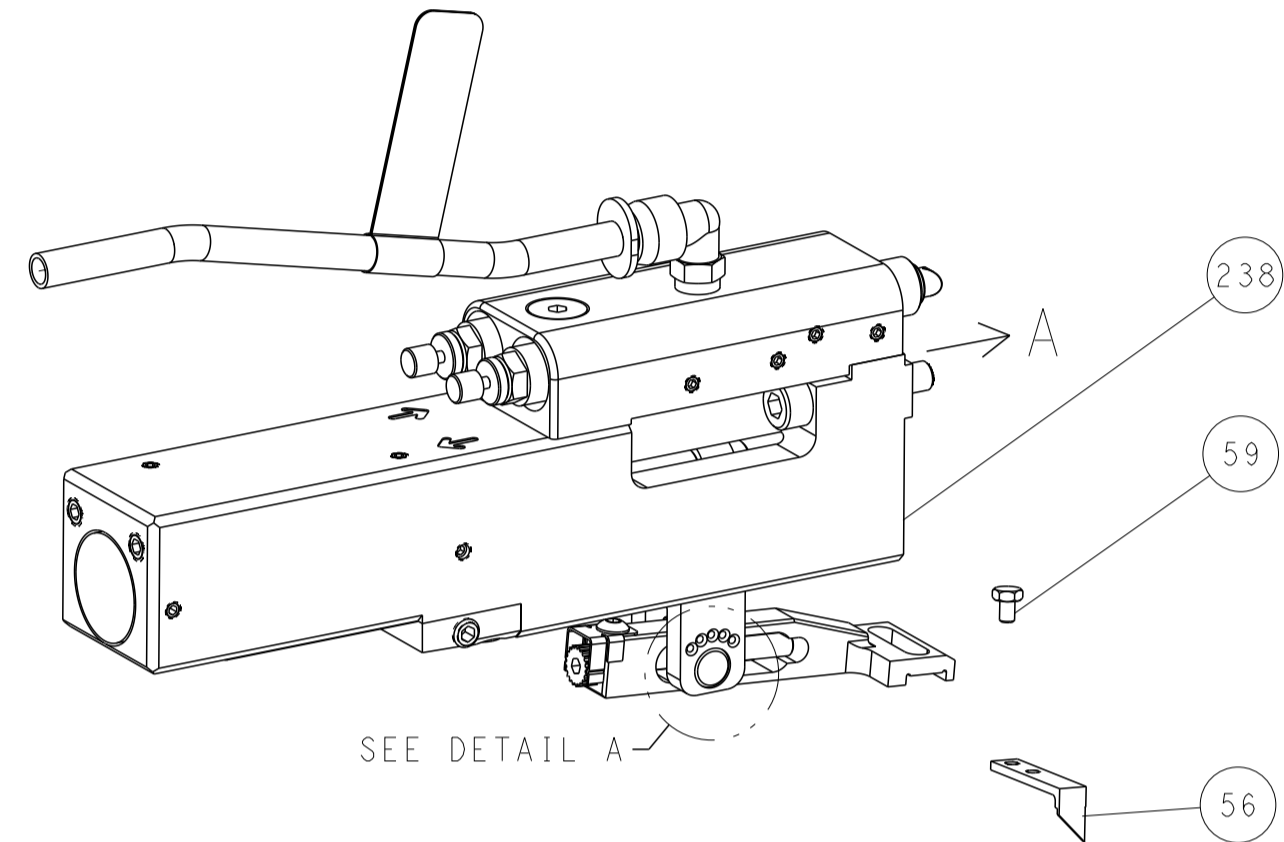
<small>THIS DRAWING IS UNPUBLISHED. IT IS THE PROPERTY OF TYCO ELECTRONICS CORPORATION. IT IS TO BE KEPT IN CONFIDENTIALITY AND NOT TO BE REPRODUCED OR TRANSMITTED IN ANY FORM OR BY ANY MEANS, ELECTRONIC OR MECHANICAL, INCLUDING PHOTOCOPYING, RECORDING, OR BY ANY INFORMATION STORAGE AND RETRIEVAL SYSTEM. PERMISSION TO REPRODUCE THIS DRAWING IN WHOLE OR IN PART IS GRANTED BY TYCO ELECTRONICS CORPORATION TO THE USER OF THIS DRAWING. ALL RIGHTS RESERVED.</small>		DWN: HOFFNER 11OCT2011 CHK: T. ELBIN 18OCT2011 APVD: T. ELBIN 18OCT2011	TE Connectivity Harrisburg, PA 17105-3608
DIMENSIONS: mm TOLERANCES UNLESS OTHERWISE SPECIFIED: 0 PLC ± 1 PLC ± 2 PLC ± 3 PLC ± 4 PLC ± ANGLES ± FINISH		NAME: OCEAN 2.0 Side Feed Applicator SIZE: A1 CAGE CODE: 00779 DRAWING NO: 2151526 SCALE: 1:2 SHEET 3 OF 4 REV N	RESTRICTED TO: - Customer Accessible Production Drawing

LOC		DIST		REVISIONS			
A	66	P	LTM	DESCRIPTION	DATE	OWN	APVD
		-		SEE SHEET 1			

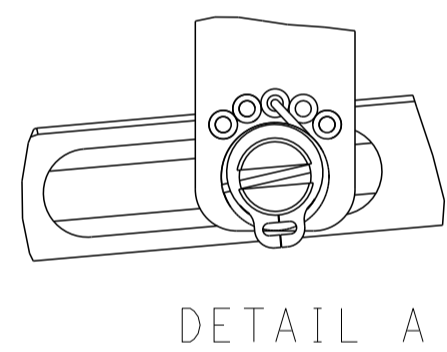
FEED TYPE MECHANICAL



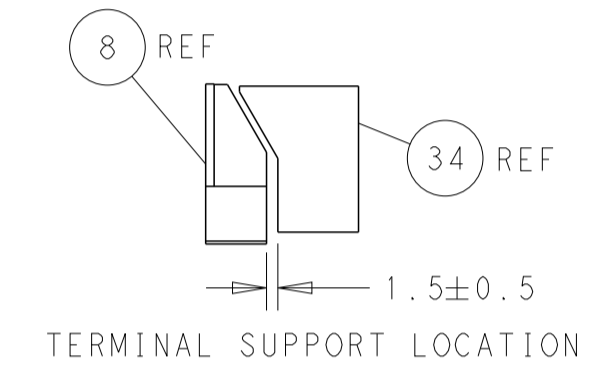
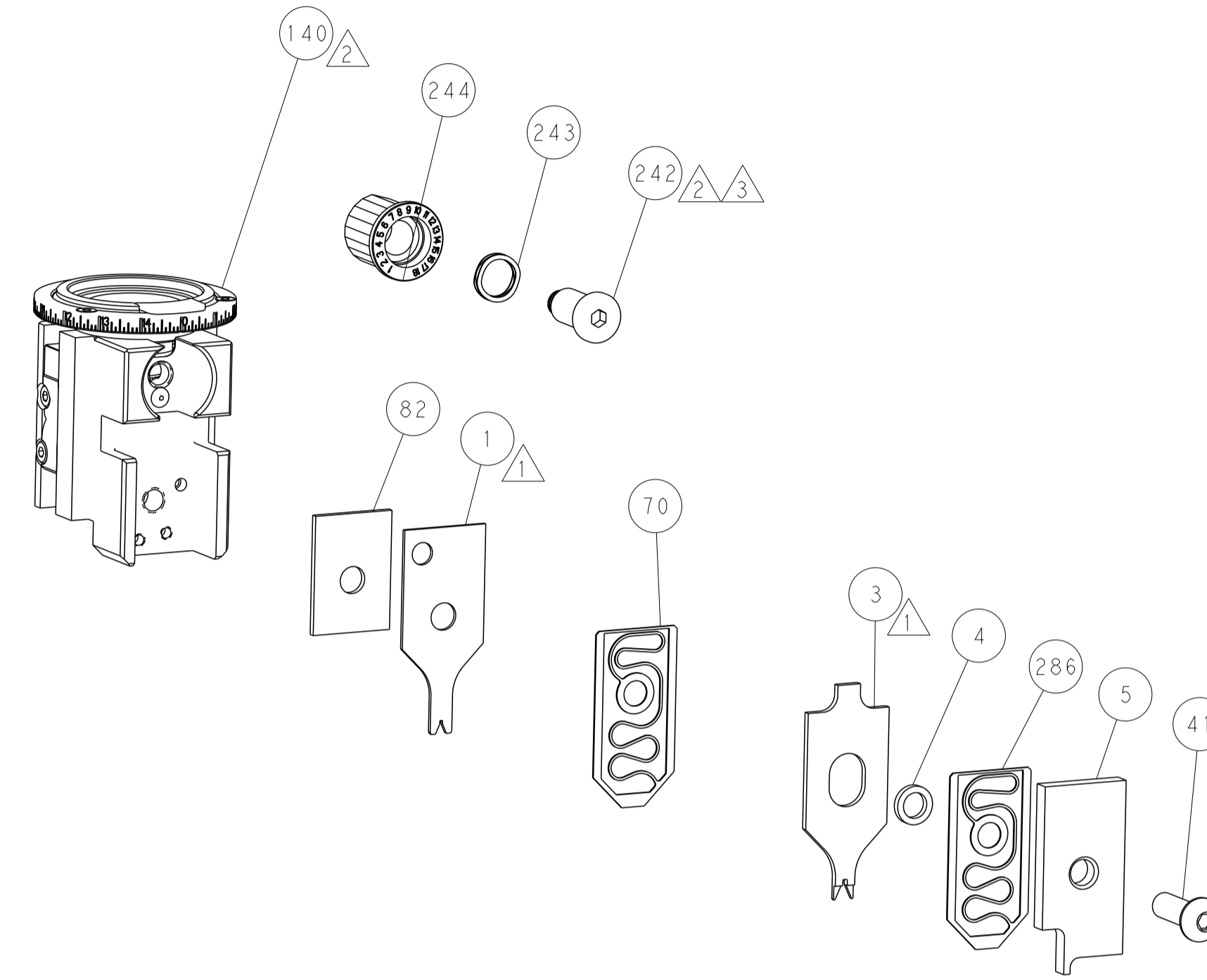
PNEUMATIC



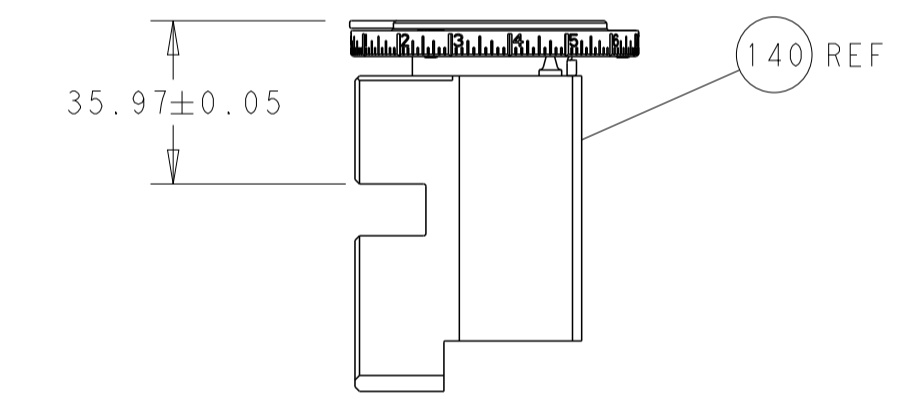
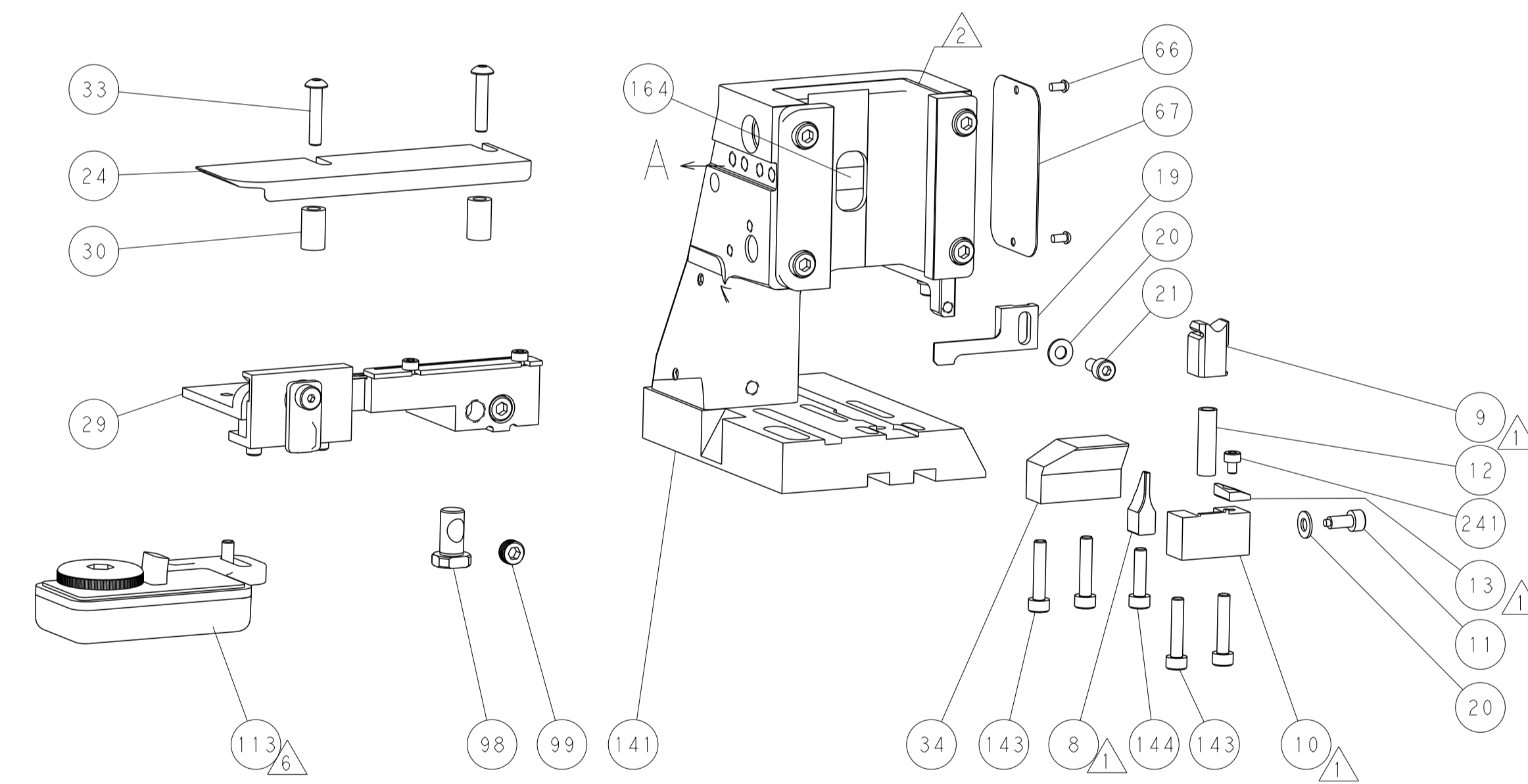
FEED SPRING SETTING POSITION (SHOWN FROM REAR SIDE)



DETAIL A

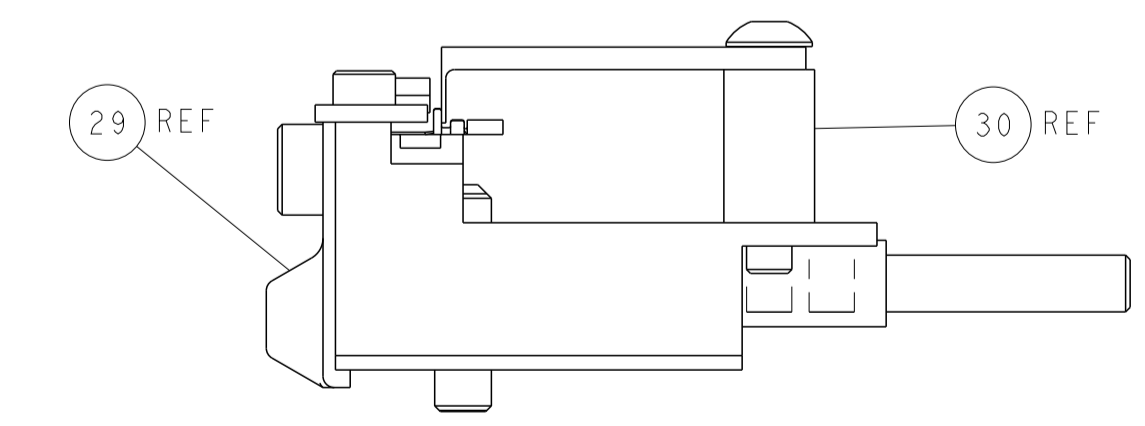


TERMINAL SUPPORT LOCATION



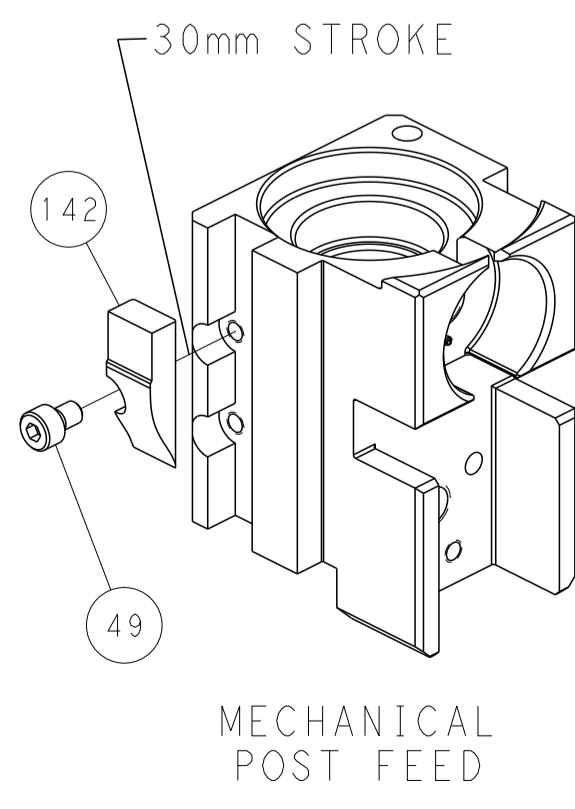
RAM SET-UP

ITEM 30 LOCATED AT FRONT HOLES

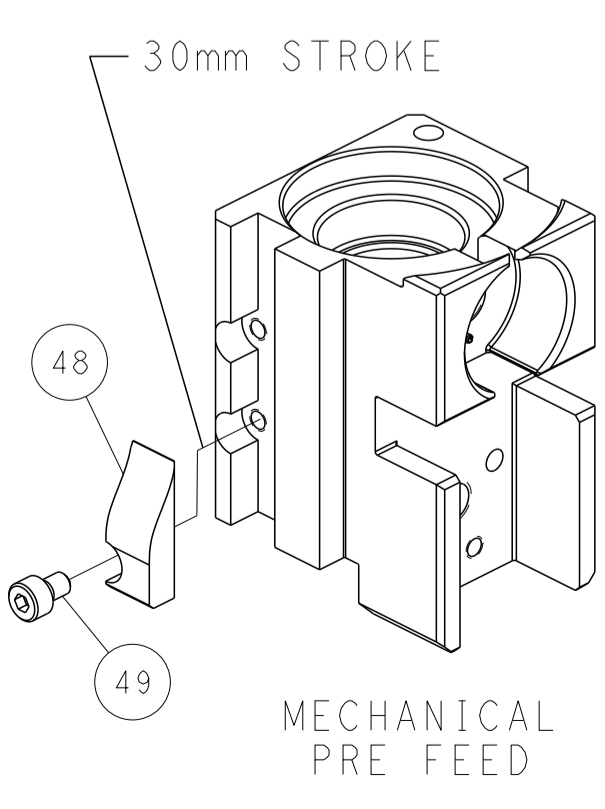


FEED TRACK POSITION GUIDE BY INSULATION BARREL

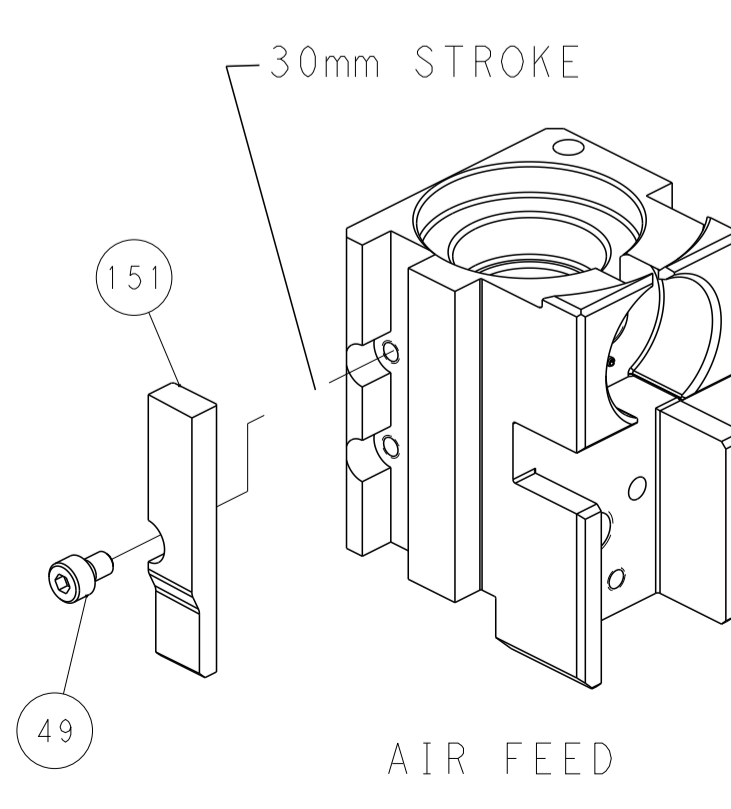
CAM POSITIONS



MECHANICAL POST FEED



MECHANICAL PRE FEED



AIR FEED

PACIFIC VERSION
 Shown on sheets 3 of 4 & 4 of 4
 (Atlantic version shown on sheets 1 of 4 & 2 of 4)

DIMENSIONS:		TOLERANCES UNLESS OTHERWISE SPECIFIED:		DWN: HOFFNER 17OCT2011		TE Connectivity	
mm	0 PLC ±	1 PLC ±	2 PLC ±	3 PLC ±	4 PLC ±	Harrisburg, PA 17105-3608	
MATERIAL:		FINISH:		APVD: T. ELBIN 18OCT2011		NAME: OCEAN 2.0 Side Feed Applicator	
				PRODUCT SPEC:		SIZE: CAGE CODE: DRAWING NO: A1 00779 ©=2151526	
				APPLICATION SPEC:		RESTRICTED TO:	
				WEIGHT:		SCALE: 1:2 SHEET 4 OF 4 REV N	
				Customer Accessible Production Drawing			