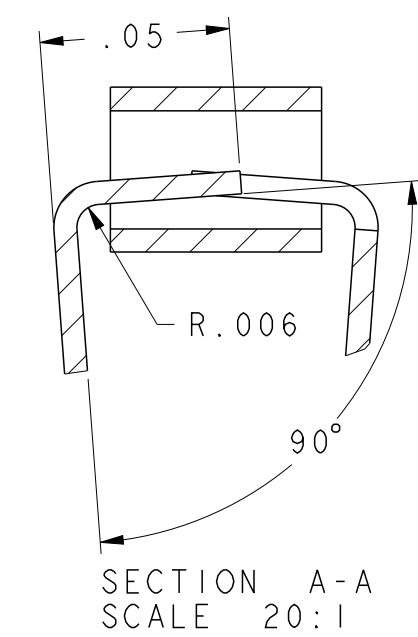
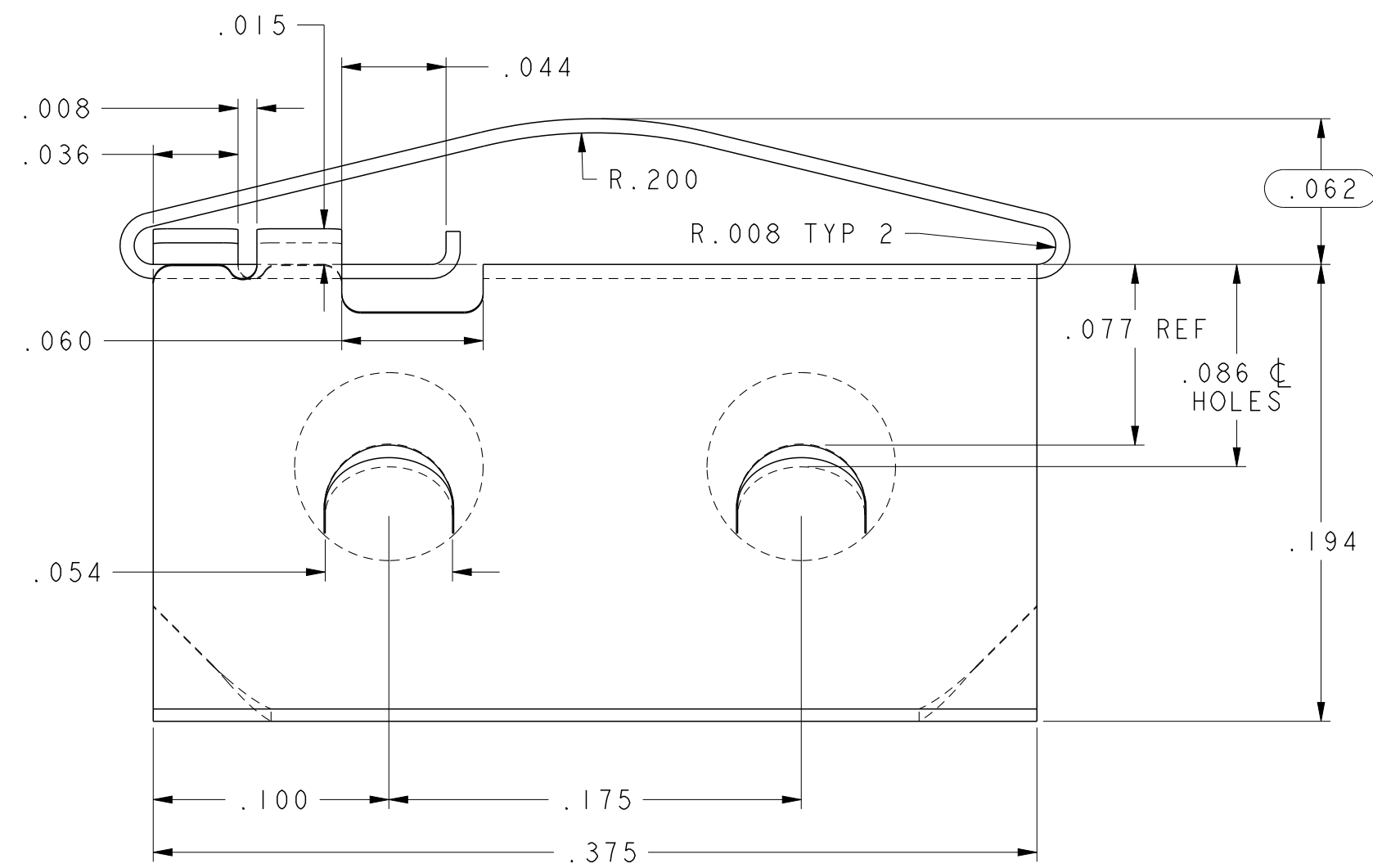
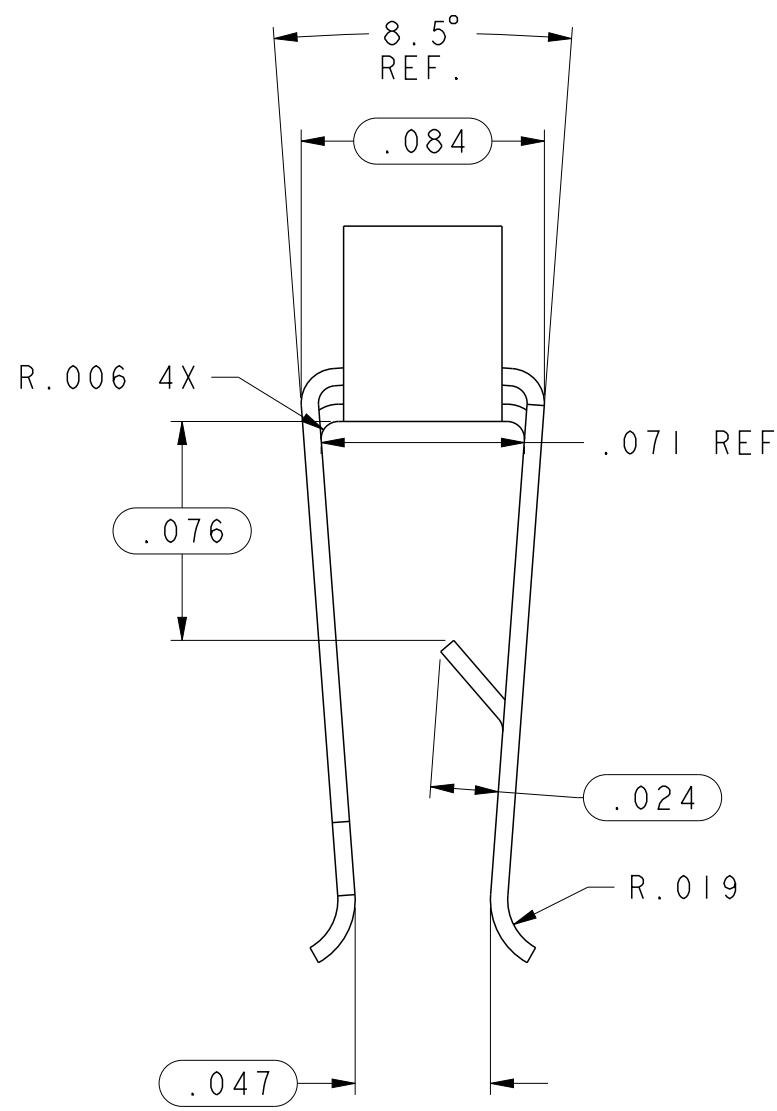
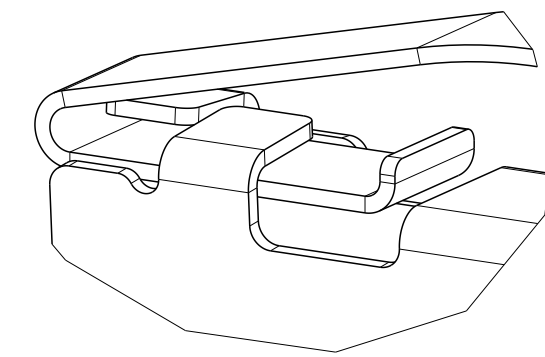
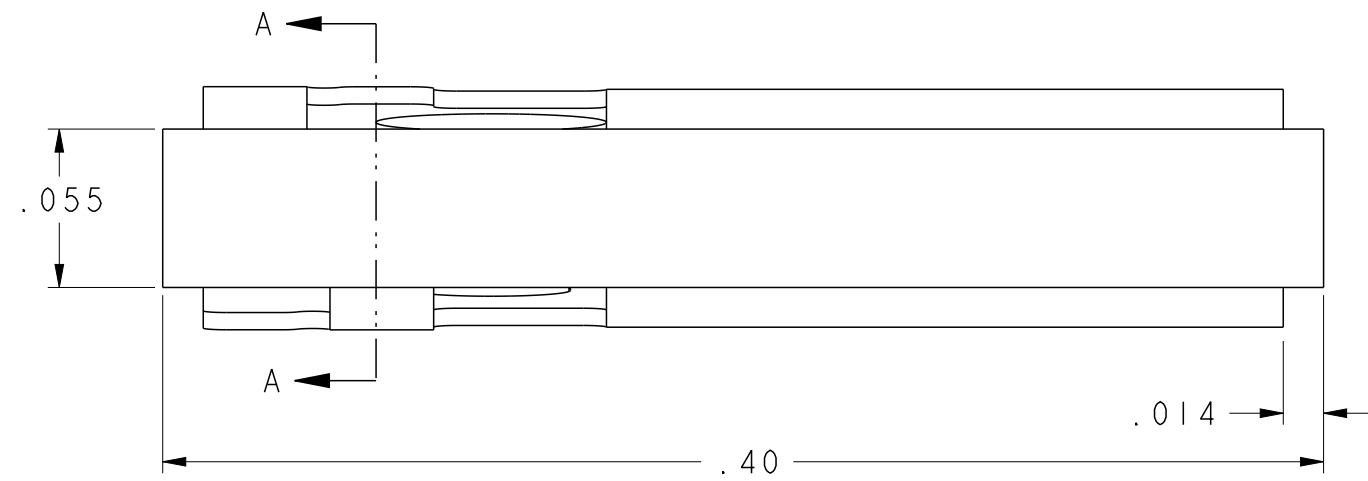
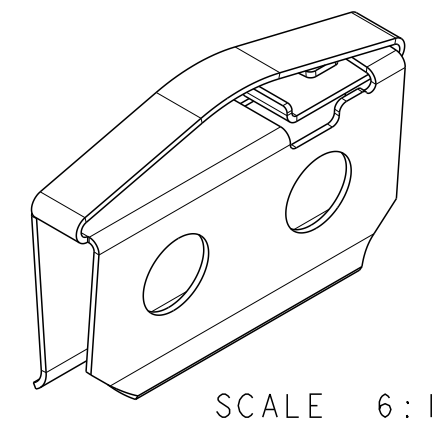
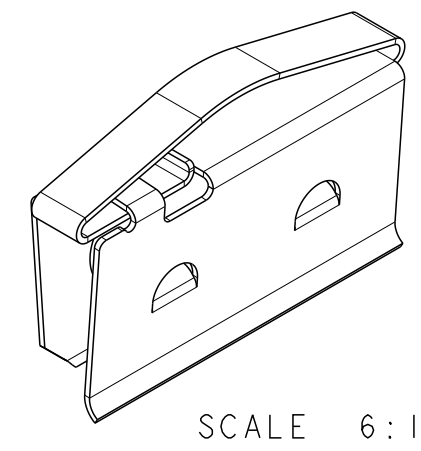
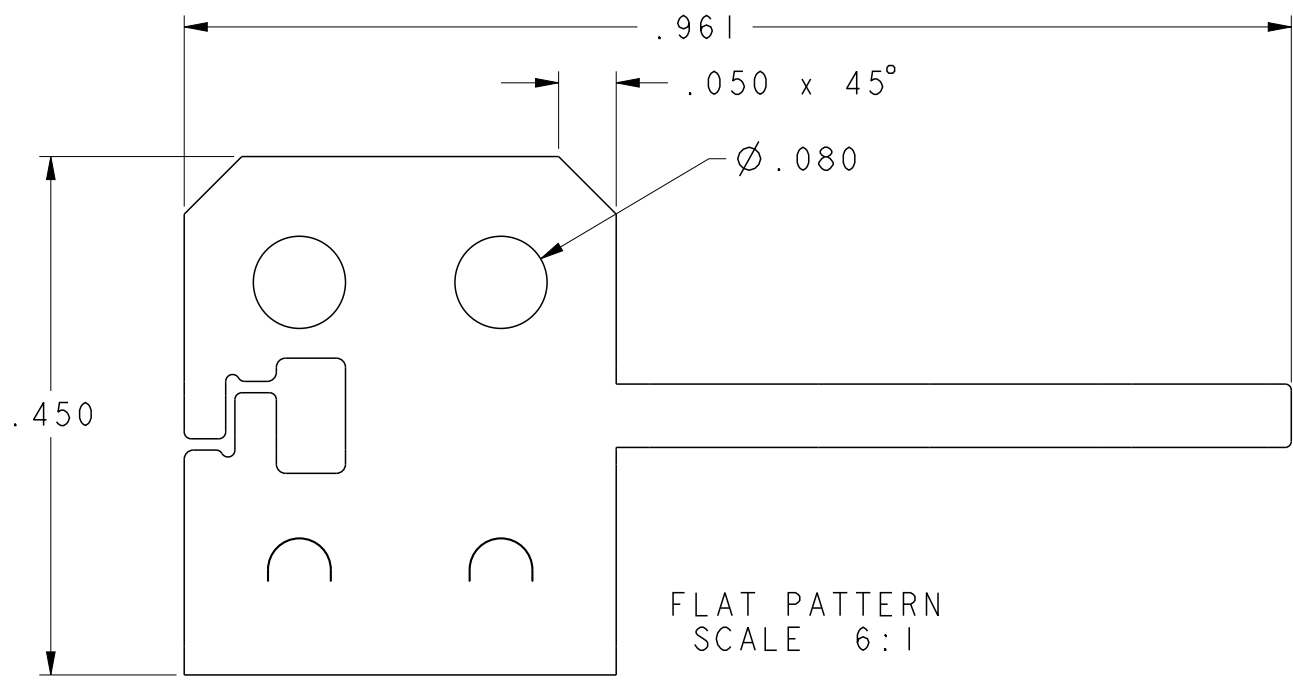


DWG NO:	OD97-0983		
REVISIONS			
MOVED "D" LANCES DOWN .020" MS 07-13-00			02
ECO-E2719 UPDATED DRAWING PER WHS DRAWING. FAK 02-05-02 EWS 02-05-02			03
ECO-E3240 FINISH WAS BRIGHT TIN SDH 09/16/02 EWS 09/20/02			04
ECO# AZ111351 DG 4/01/11 .084 WAS .080, .048 WAS .050, .450 WAS .447, INSPECTION NOTE			05



NOTE:
CIRCLED DIMENSIONS ARE CRITICAL TO FUNCTION AND FIT.
IN PROCESS INSPECTION IS REQUIRED FOR THESE DIMENSIONS.

APPROVED
By Dan Green at 5:44 pm, Apr 01, 2011

MATERIAL: .006 ±.0002 x .?? ±.00? ALLOY 25 BECU 1/4H (TD01)	TOLERANCES NOT SHOWN DECIMAL 2 PL'S ± .01 DECIMAL 3 PL'S ± .005
HEAT TREAT: TO DPH 353 MIN USING A 500 GRAM LOAD	ANGULAR ± 3°
THICKNESS AFTER: X X	THIRD ANGLE PROJECTION
FINISH: AS REQUIRED	UNITS: INCH SCALE: 15:1 [MM]
CAD MAINTAINED DRAWING. MANUAL CHANGES UNAUTHORIZED.	

Laird TECHNOLOGIES		DRAWN BY: PVH	DATE: 06/22/99
		CHECKED: LP	DATE: 07/19/99
		APPROVED: PVH	DATE: 07/19/99
CARD GUIDE CLIP-ON			
REF. DWG. NO.	DWG. NO.	OD97-0983	REV
			05
SHEET 1 OF 1			