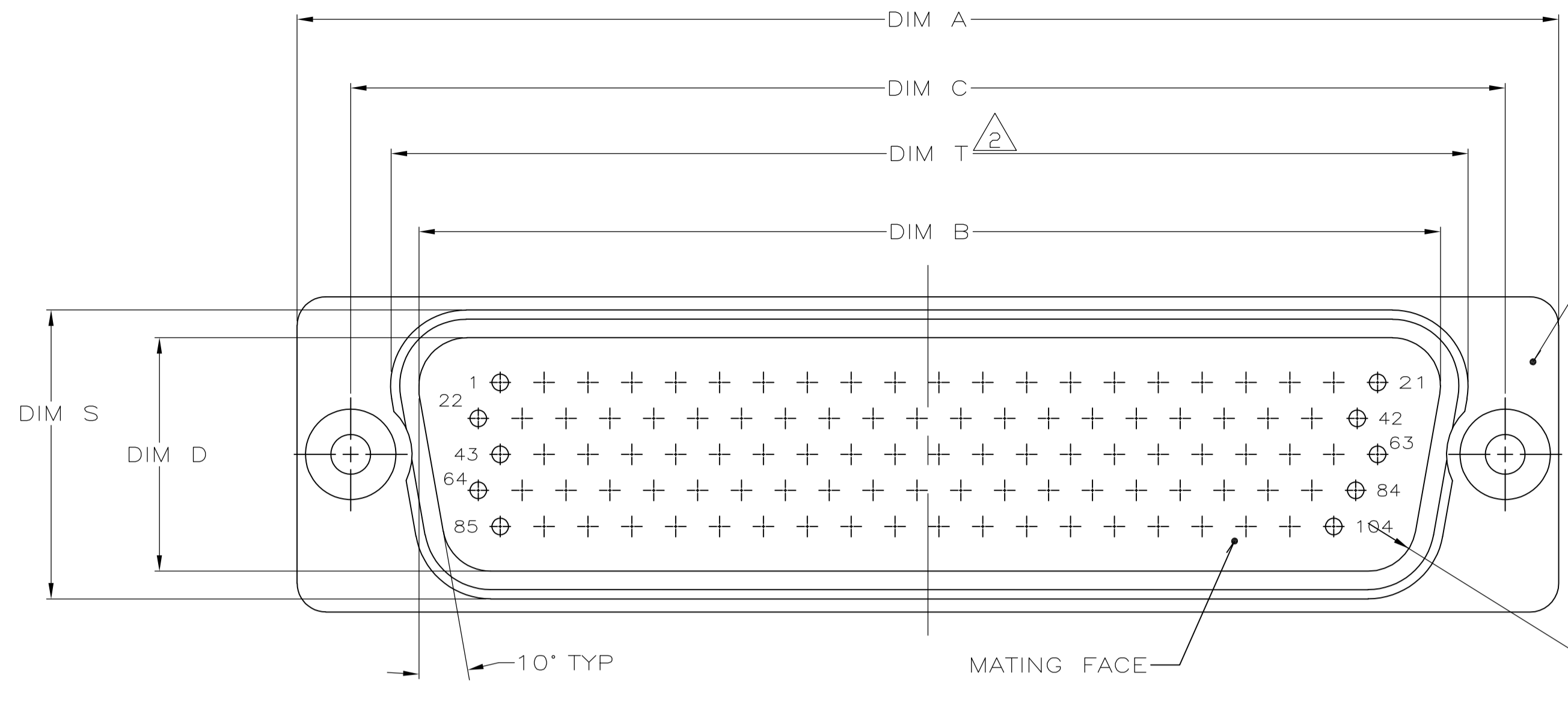


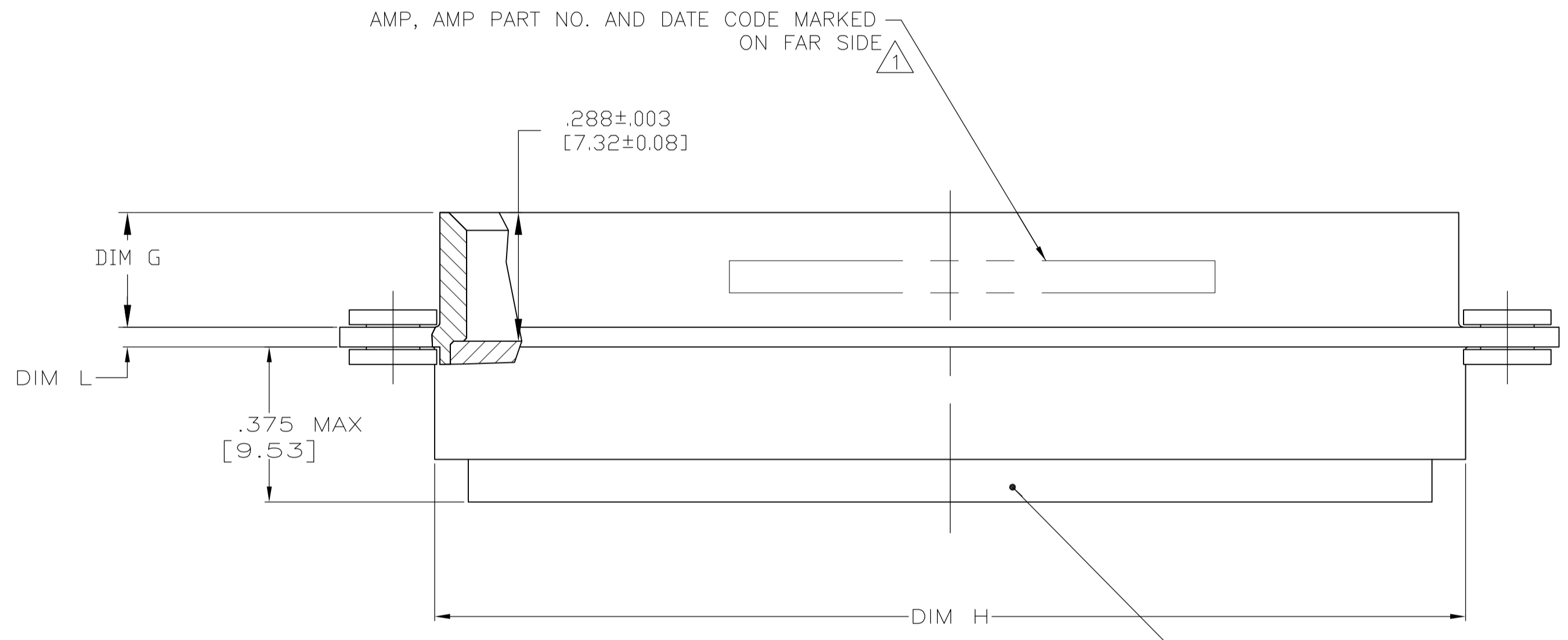
LOC		DIST		REVISIONS			
DF	DO	REV	DESCRIPTION	DATE	BY	APPV	
G		1	REV PER ECO 09-028498	20JAN10	PY	RL	



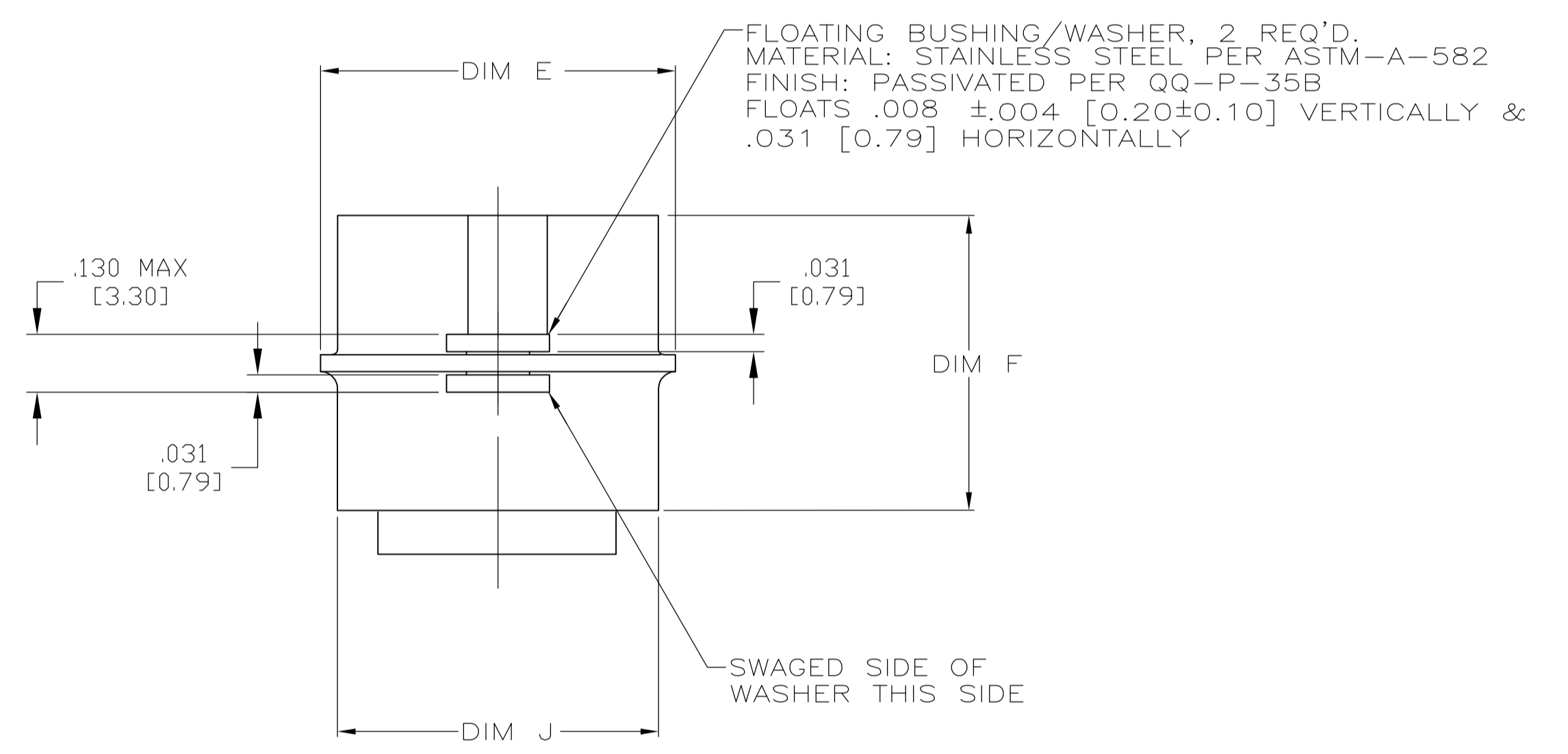
SHELL:  
 MATERIAL: ALUMINUM ALLOY PER 6061.  
 FINISH: CADMIUM PER QQ-P-416, TYPE II,  
 CLASS 2 OVER COPPER PER MIL-C-14550, CLASS 4

- MARKED WITH .047-.062 HIGH CHARACTERS. FAR SIDE REFERS TO THE WIDE SIDE OF THE KEYSTONE. NEAR SIDE REFERS TO THE NARROW SIDE OF THE KEYSTONE. IF PART IS TOO SMALL TO MARK ON FRONT OF SHELL, MARKING CAN BE SPLIT BETWEEN FRONT AND REAR OF SHELL
- FEATURE SHORTENED BY CLEARANCE RADIUS FOR FLOAT BUSHING.

R.104±.002  
 [2.64±0.05]



INSERT ASSEMBLY:  
 MAT'L: POLYPHENYLENE SULFIDE (PPS)  
 GST-40F PER MIL-M-24519 OR GLASS FILLED  
 POLYESTER TPES013G30 PER ASTM D5927



2.340 [59.44]	.610 [15.49]	.044 [1.12]	.614 [15.59]	2.319 [58.90]	.260 [6.60]	.569 [14.45]	.683 [17.35]	.509 [12.93]	2.505 [63.63]	2.218 [56.34]	2.744 [69.70]	104	6	1757207-6
2.192 [55.68]	.543 [13.79]	.044 [1.12]	.556 [14.12]	2.195 [55.75]	.260 [6.60]	.569 [14.45]	.673 [17.09]	.503 [12.78]	2.495 [63.37]	2.212 [56.18]	2.714 [68.94]	78	5	1757207-5
1.650 [41.91]	.437 [11.10]	.044 [1.12]	.444 [11.28]	1.642 [41.71]	.260 [6.60]	.569 [14.45]	.509 [12.93]	.327 [8.31]	1.857 [47.17]	1.527 [38.78]	2.103 [53.42]	44	3	1757207-3
.782 [19.86]	.437 [11.10]	.035 [0.89]	.444 [11.28]	.776 [19.71]	.260 [6.60]	.569 [14.45]	.499 [12.67]	.321 [8.15]	.989 [25.12]	.659 [16.74]	1.228 [31.19]	15	1	1757207-1
T	S	L	J	H	G	F	E	D	C	B	A	NO OF POS	SHELL SIZE	PART NUMBER

THIS DRAWING IS A CONTROLLED DOCUMENT.

DIMENSIONS: INCHES	TOLERANCES UNLESS OTHERWISE SPECIFIED:	DIN C.C. THOMAS 02MAR2006	3-3-06	Tyco Electronics Corporation Harrisburg, PA 17105-3608
0 PLC ± -	1 PLC ± -	2 PLC ± -	3 PLC ± .005	4 PLC ± -
ANGLES ± -				
MATERIAL	FINISH	APPROVED: D. MILLER 3-3-06	NAME: D. MILLER	PRODUCT SPEC: PLUG ASSEMBLY, AMPLIMITE, SERIES 90, BLINDMATE
		APPLICATION SPEC	SIZE: A1	CAGE CODE: 00779
		WEIGHT	DRAWING NO: 1757207	RESTRICTED TO
		CUSTOMER DRAWING	SCALE: 4:1	SHEET 1 OF 1